

SW480 [SW-480]

Catalog No: tcel223



Available Sizes

Size: 1×10⁶cells/t25culturebottle



Specifications

Application:

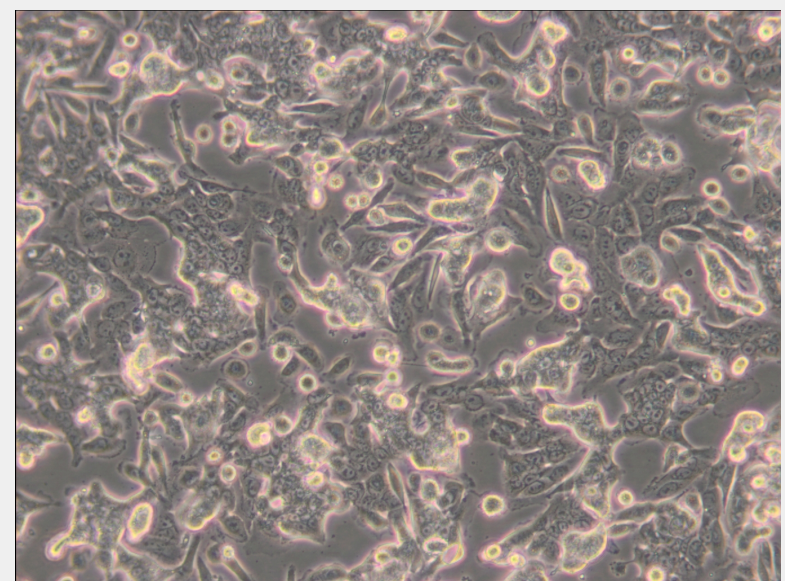
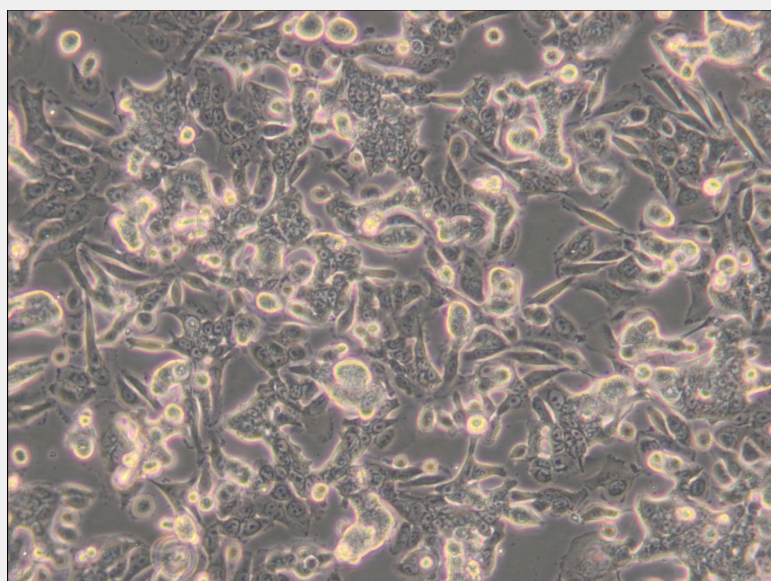
This cell line is a suitable transfection host. This line has a mutation in codon 12 of the ras proto-oncogene, and can be used as a positive control for PCR assays of mutation in this codon.

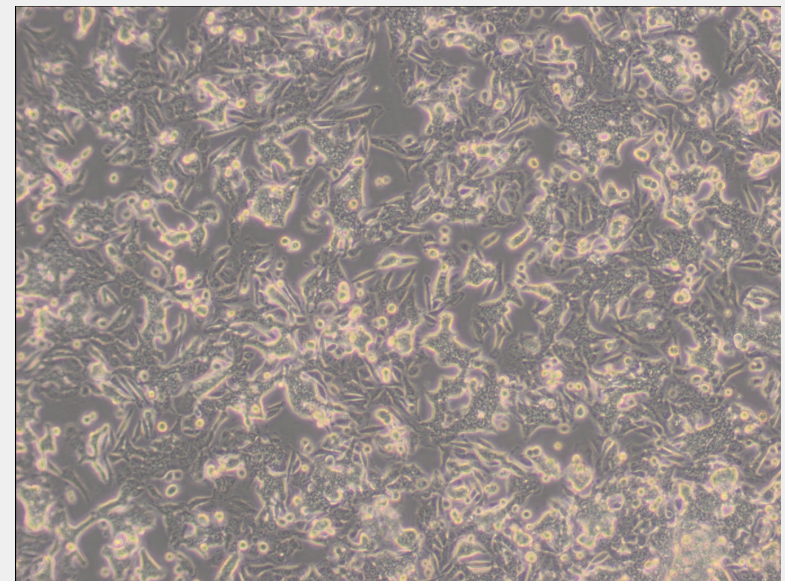
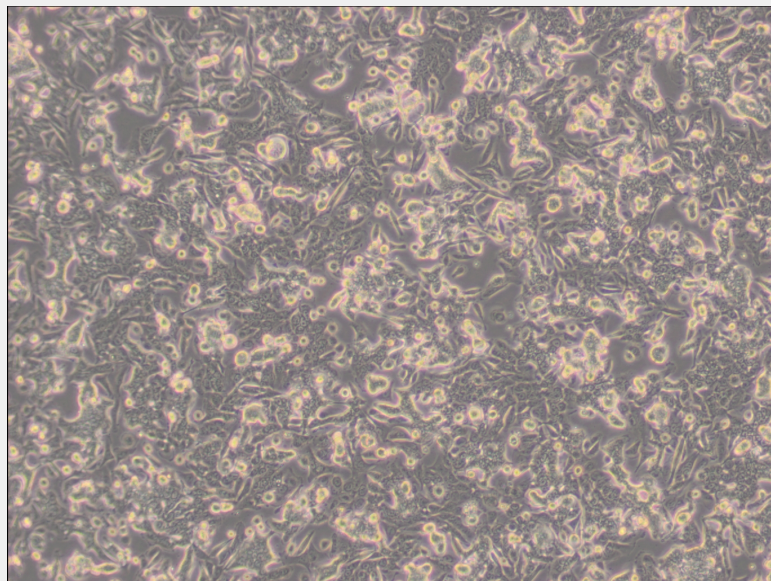
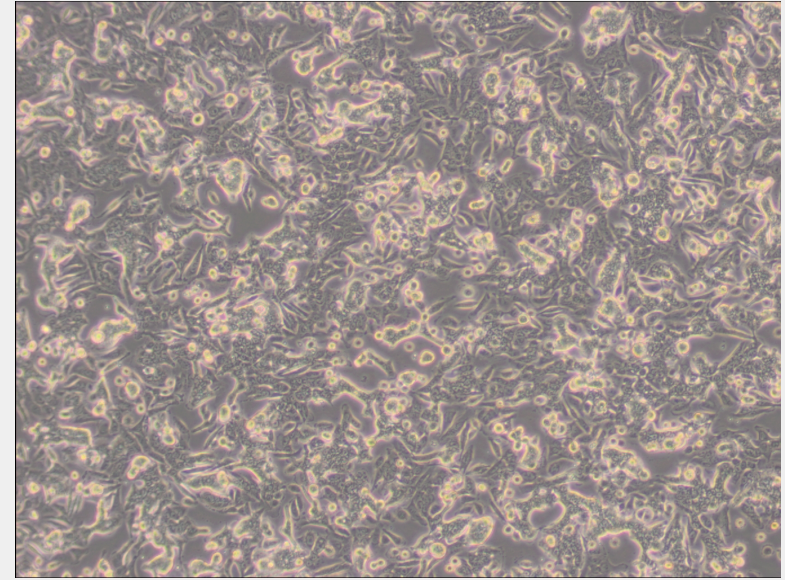
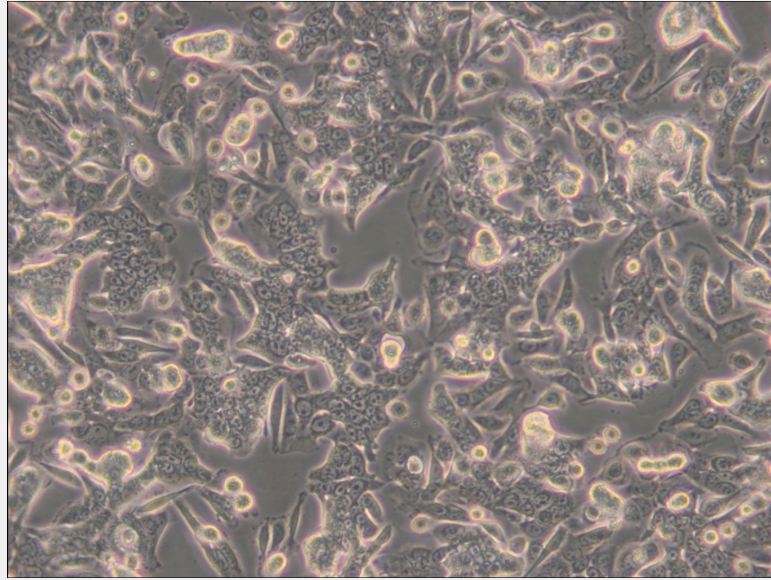
Subculturing:

Remove and discard culture medium. Briefly rinse the cell layer with DPBS solution to remove all traces of serum that contains trypsin inhibitor. Add 1.0 to 2.0 mL of Trypsin-EDTA solution to flask and observe cells under an inverted microscope until cell layer is dispersed (usually within 2 to 3 minutes). Cells that are difficult to detach may be placed at 37°C to facilitate dispersal. Add 4.0 to 6.0 mL of complete growth medium and aspirate cells by gently pipetting. Add appropriate aliquots of the cell suspension to new culture vessels.

Product Description

A cell line established from a lymph node metastasis taken from the same patient one year later is available. The line is negative for CSAp (CSAp-) and colon antigen 3. The cells are positive for keratin by immunoperoxidase staining. There is a G→A mutation in codon 273 of the p53 gene resulting in an Arg→His substitution and a C→T mutation in codon 309 resulting in a Pro→Ser substitution. The cells express elevated levels of p53 protein. The line is positive for expression of c-myc, K-ras, H-ras, N-ras, myb, sis and fos oncogenes. N-myc oncogene expression was not detected. Matrilysin, a metalloproteinase associated with tumor invasiveness, is not expressed. The cells have been reported to produce GM-CSF.





All products are for RESEARCH USE ONLY. Not for diagnostic & therapeutic purposes!