

# SK-BR-3 [SKBR3]

Catalog No: tcel211



## Available Sizes

**Size:** 1×10<sup>6</sup>cells/t25culturebottle



## Specifications

### Application:

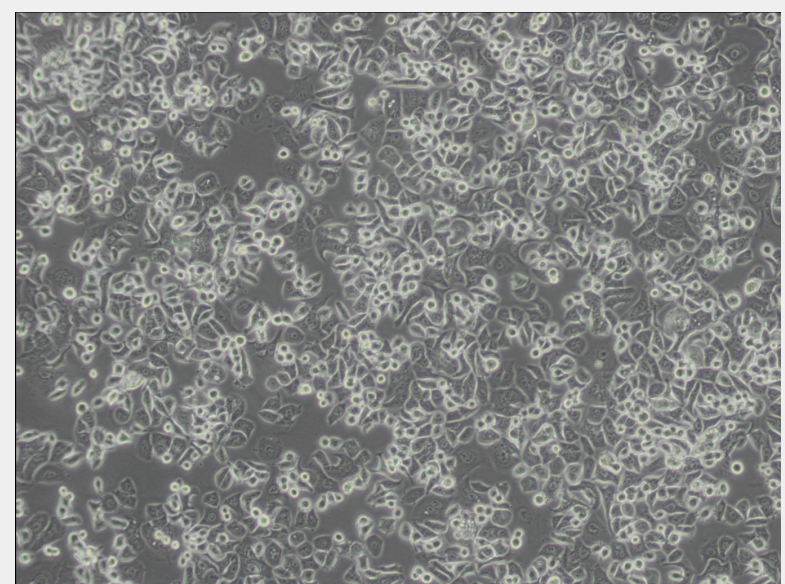
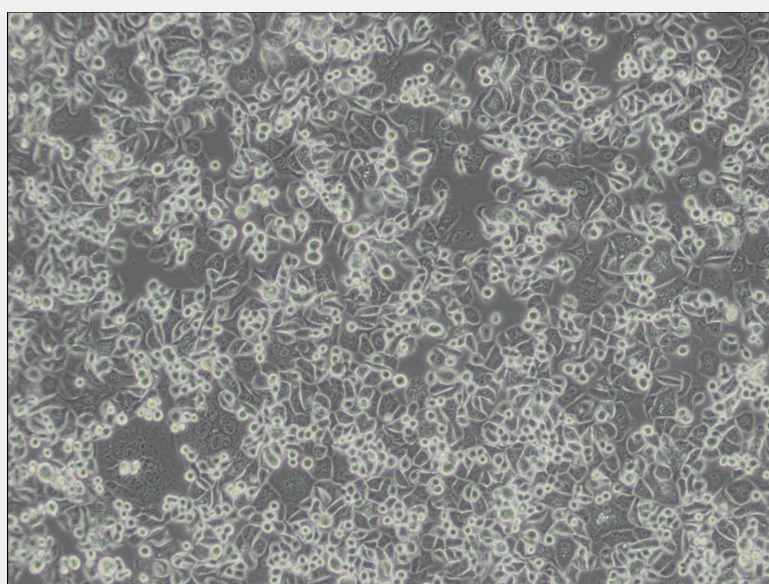
transfection host

### Subculturing:

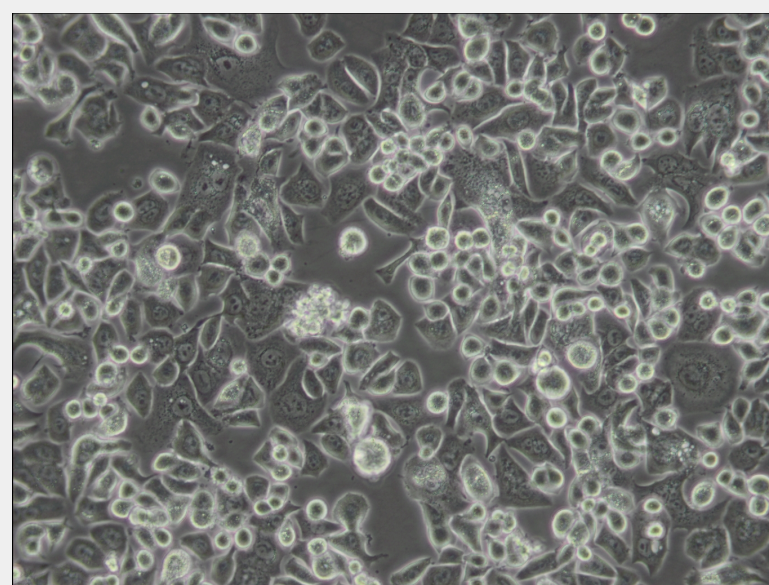
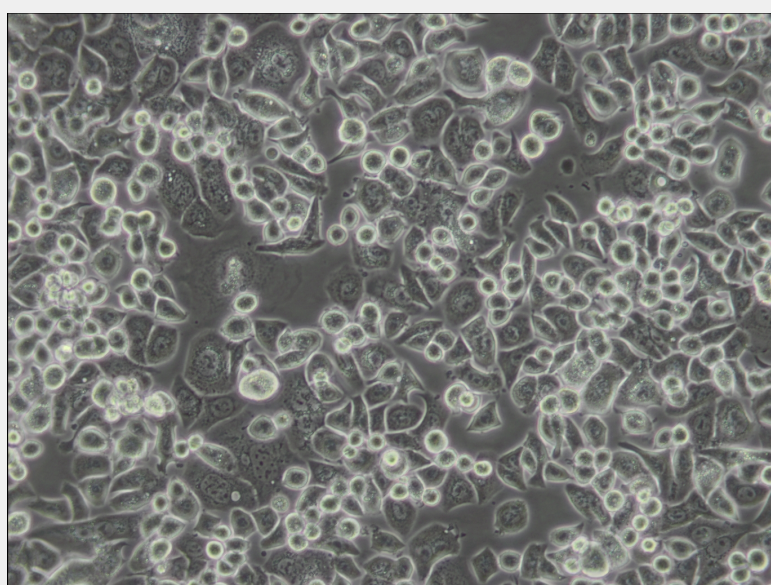
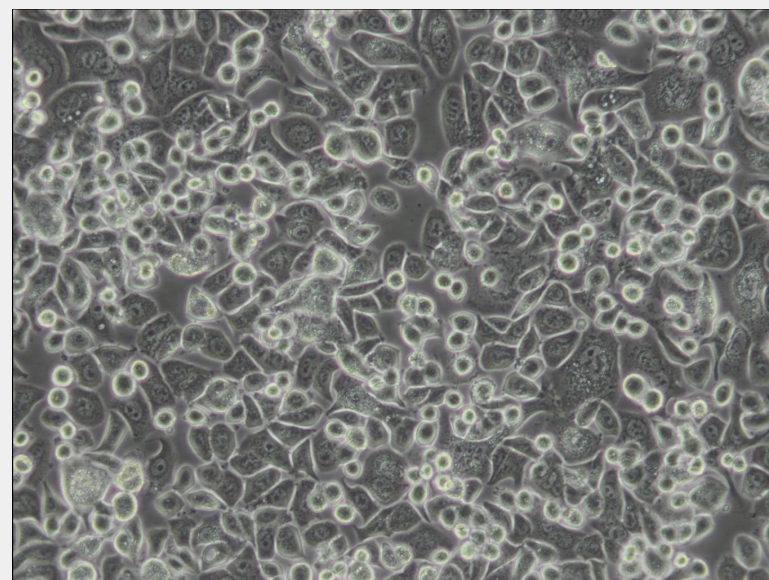
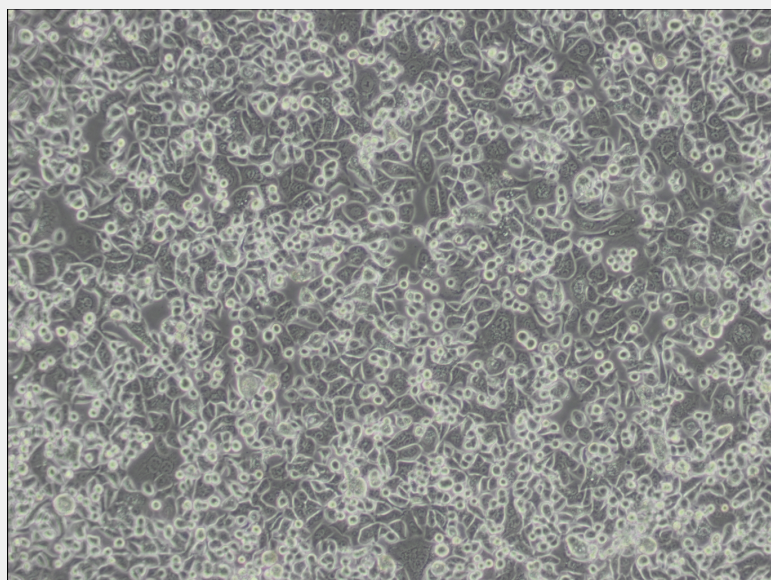
Remove and discard culture medium. Briefly rinse the cell layer with DPBS solution to remove all traces of serum that contains trypsin inhibitor. Add 1.0 to 2.0 mL of Trypsin-EDTA solution to flask and observe cells under an inverted microscope until cell layer is dispersed (usually within 2 to 3 minutes). Cells that are difficult to detach may be placed at 37°C to facilitate dispersal. Add 4.0 to 6.0 mL of complete growth medium and aspirate cells by gently pipetting. Add appropriate aliquots of the cell suspension to new culture vessels.

## Product Description

he patient, a White, Caucasian female, age 43, blood type A<sup>+</sup>, had been treated with radiation, steroids, cytoxan and 5-fluorouracil.No virus particles.Ultrastructural features include microvilli and desmosomes, glycogen granules, large lysosomes, bundles of cytoplasmic fibrils.The SK-BR-3 cell line overexpresses the HER2/c-erb-2 gene product.







All products are for RESEARCH USE ONLY. Not for diagnostic & therapeutic purposes!