

# SH-SY5Y [SHSY-5Y]

Catalog No: tcel208



## Available Sizes

**Size:** 1×10<sup>6</sup>cells/t25culturebottle



## Specifications

### Application:

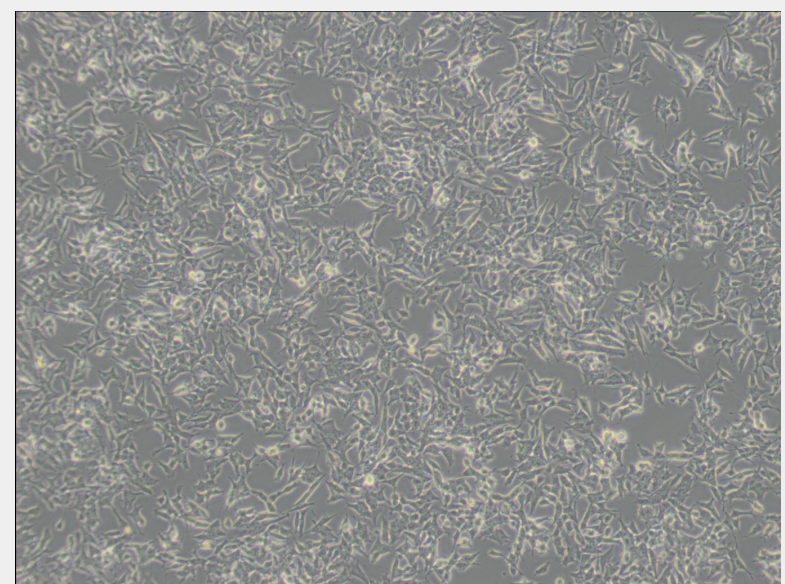
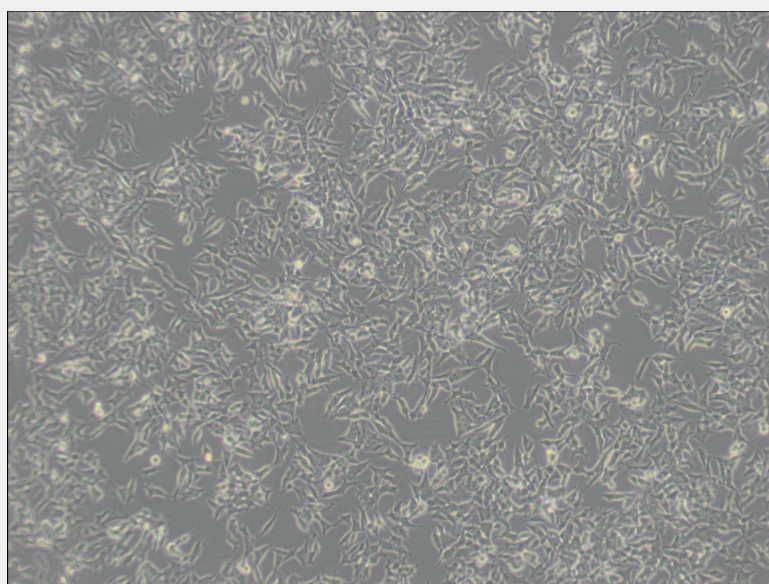
transfection host

### Subculturing:

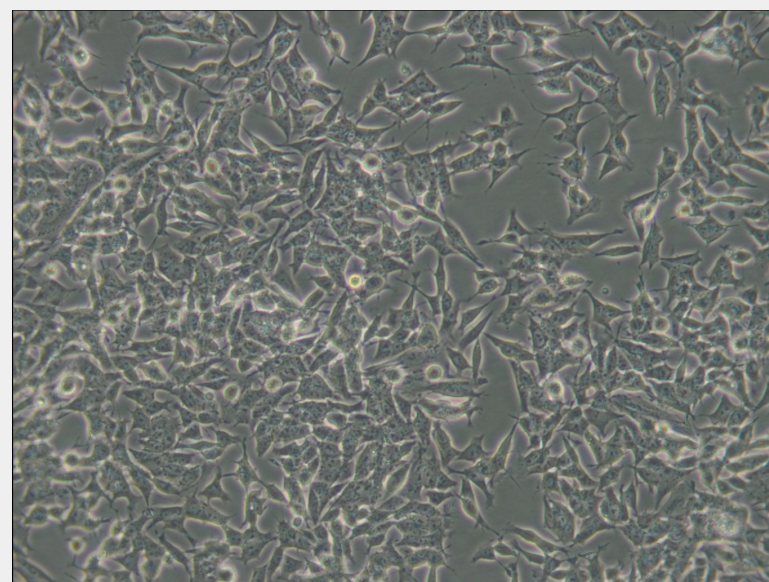
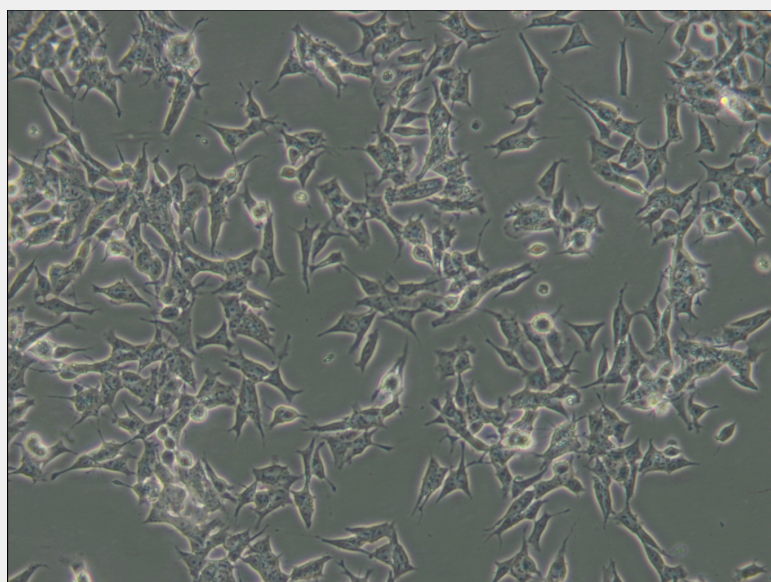
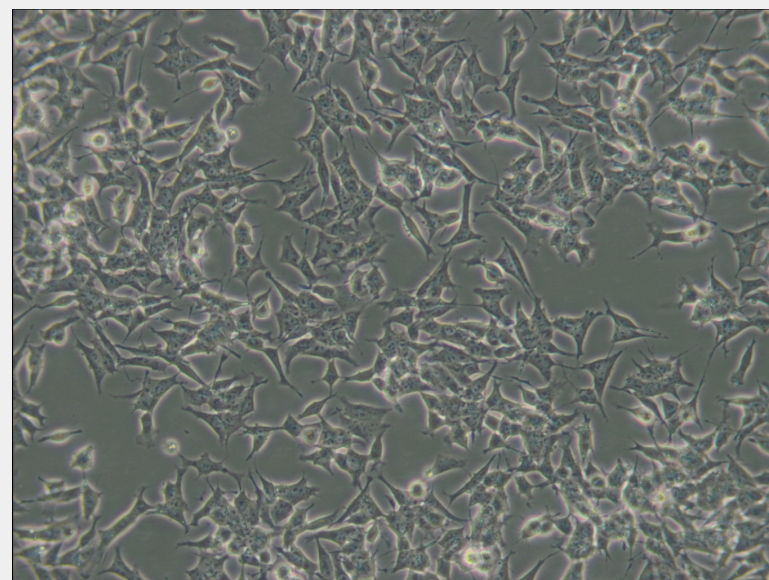
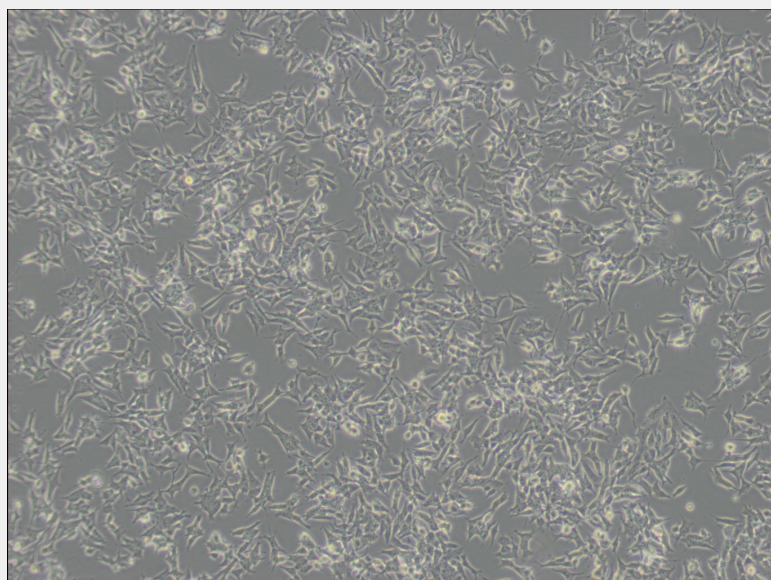
Remove and discard culture medium. These cells grow as a mixture of floating and adherent cells. Sometimes many cells are floating, they can be harvested by centrifugation of medium instead of discarding it. Add 1.0 to 2.0 mL of 0.25% (w/v) Trypsin-0.53mM EDTA solution to flask and observe cells under an inverted microscope until cell layer is dispersed (usually within 2 to 3 minutes). Add 4.0 to 6.0 mL of complete growth medium and aspirate cells by gently pipetting. Add appropriate aliquots of the cell suspension to new culture vessels. Incubate cultures at 37°C.

## Product Description

SH-SY5Y cells have a reported saturation density greater than 1×10<sup>6</sup> cells/cm<sup>2</sup>. They are reported to exhibit moderate levels of dopamine beta hydroxylase activity. Ref







All products are for RESEARCH USE ONLY. Not for diagnostic & therapeutic purposes!