

RSC96

Catalog No: tcel199



Available Sizes

Size: 1×10⁶cells/t25culturebottle



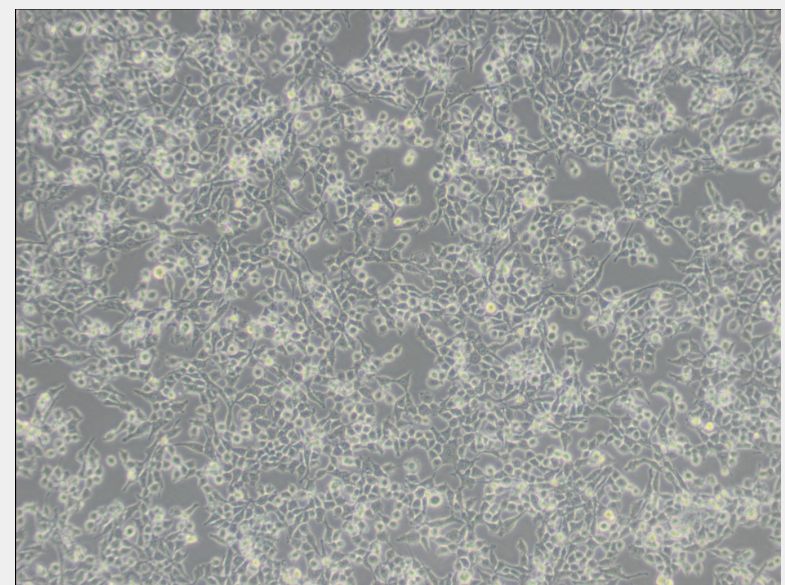
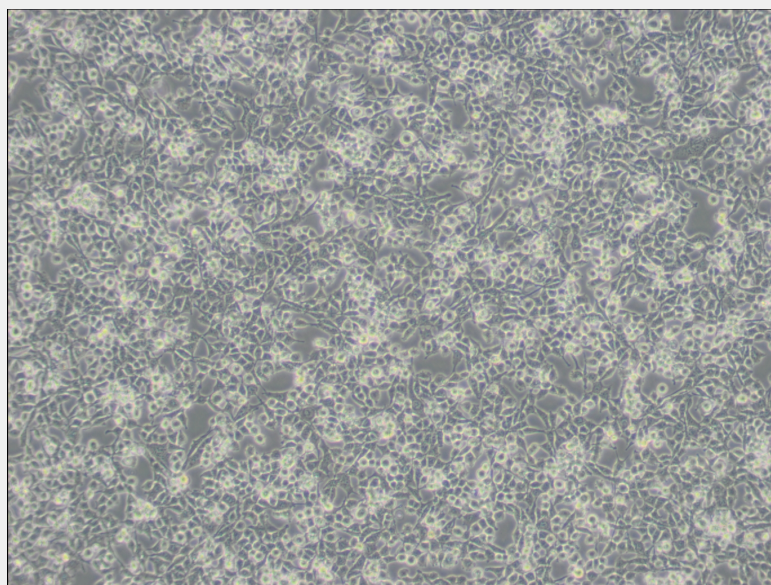
Specifications

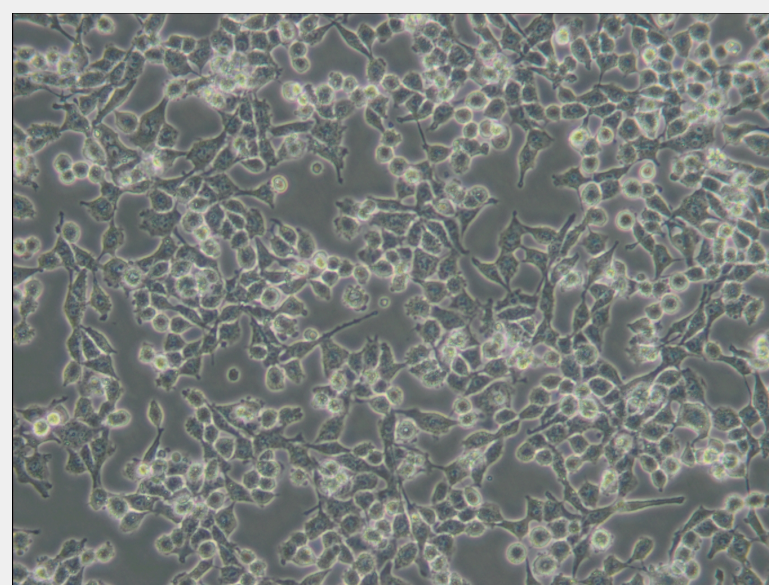
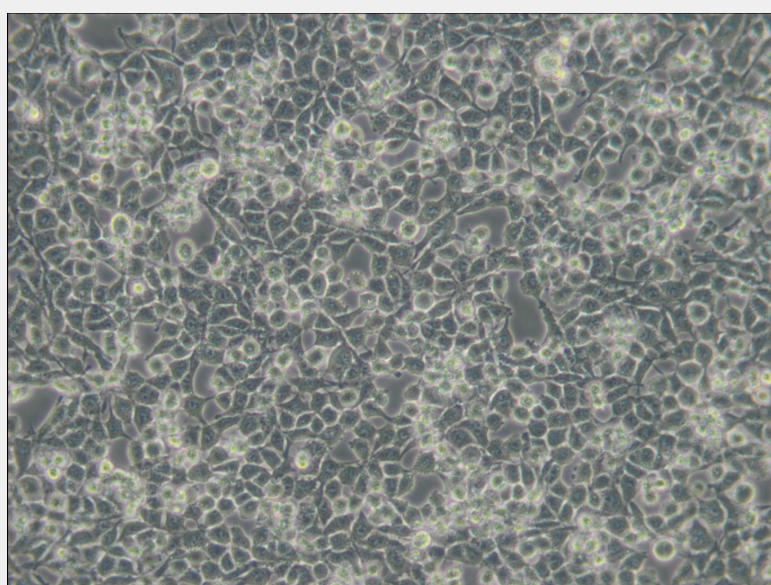
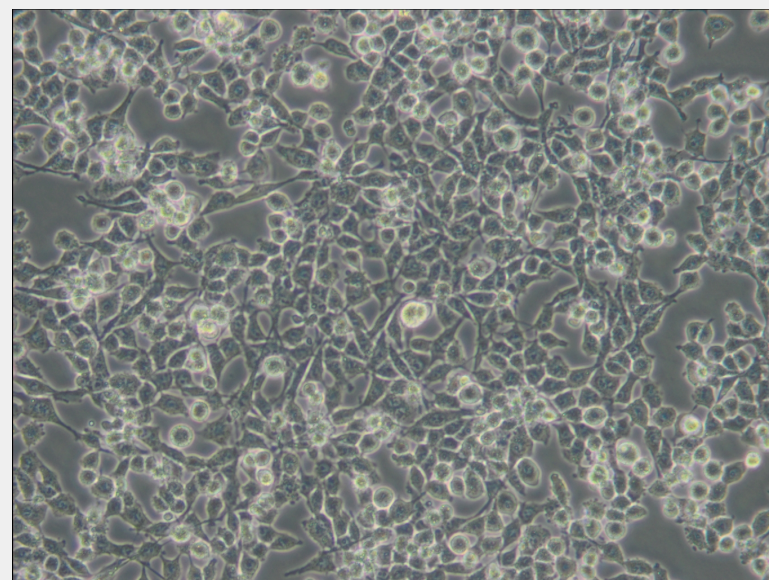
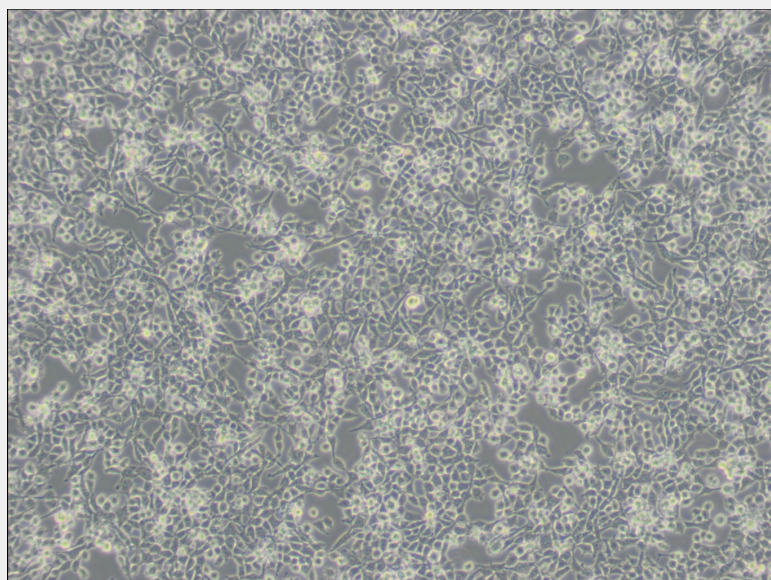
Subculturing:

Remove and discard culture medium. Briefly rinse the cell layer with DPBS solution to remove all traces of serum that contains trypsin inhibitor. Add 1.0 to 2.0 mL of Trypsin-EDTA solution to flask and observe cells under an inverted microscope until cell layer is dispersed (usually within 2 to 3 minutes). Cells that are difficult to detach may be placed at 37°C to facilitate dispersal. Add 4.0 to 6.0 mL of complete growth medium and aspirate cells by gently pipetting. Add appropriate aliquots of the cell suspension to new culture vessels.

Product Description

A culture submitted to the ATCC in December of 2002 was found to be contaminated with mycoplasma. Progeny were cured by a 21-day treatment with BM Cycline. The cells were assayed for mycoplasma, by the Hoechst stain, PCR and the standard culture test, after a six-week period following treatment. All tests were negative.





All products are for RESEARCH USE ONLY. Not for diagnostic & therapeutic purposes!