

# Raji

**Catalog No: tcel189**



## Available Sizes

---

**Size:** 1×10<sup>6</sup>cells/t25culturebottle

---



## Specifications

---

**Application:**

transfection

---

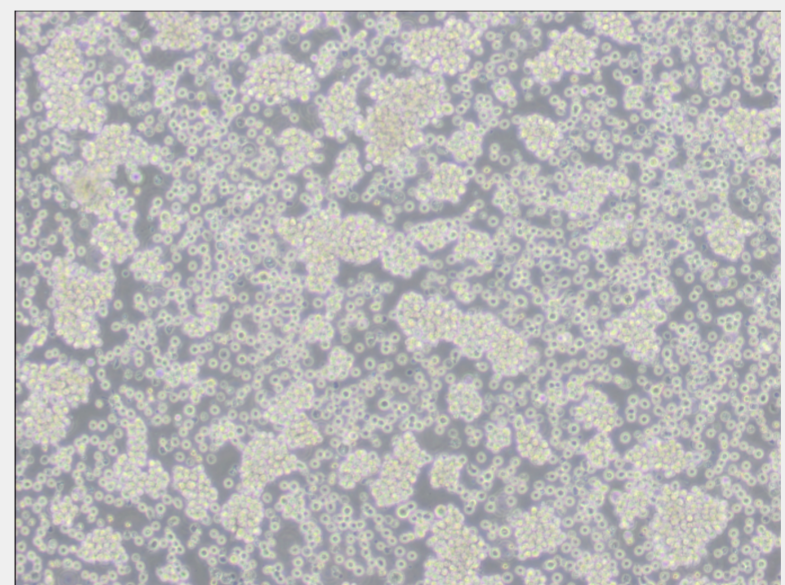
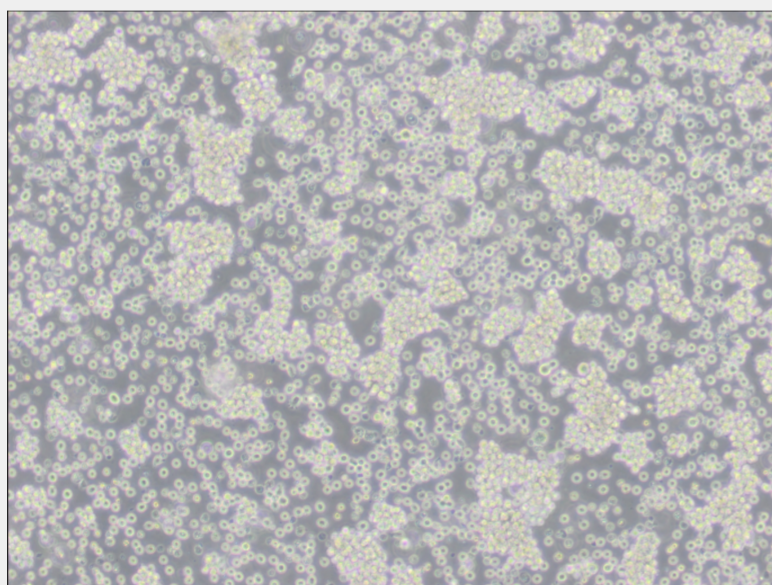
**Subculturing:**

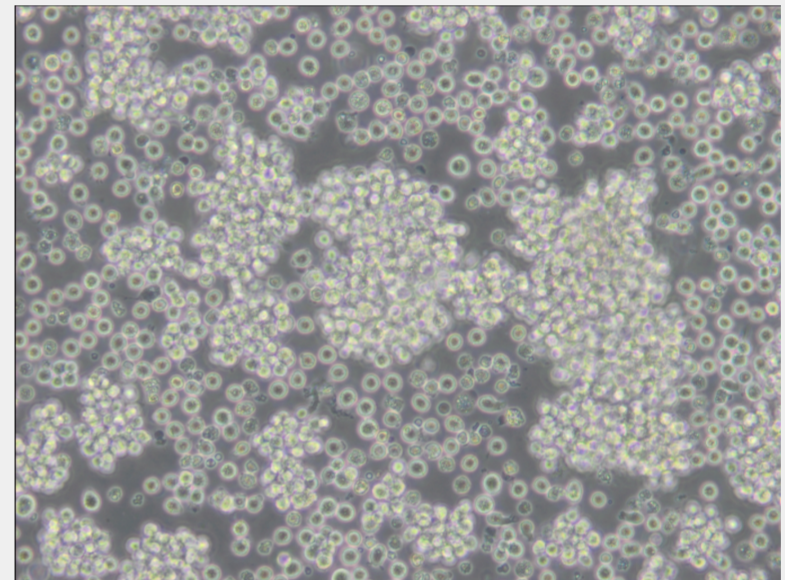
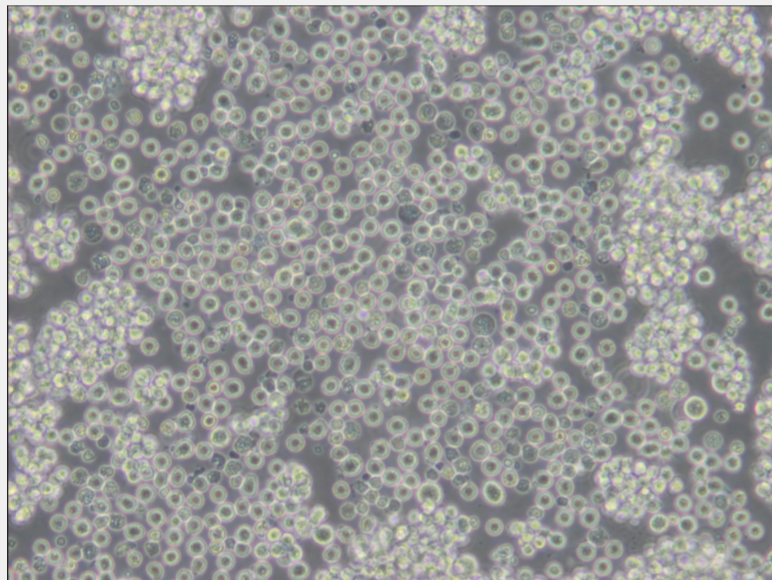
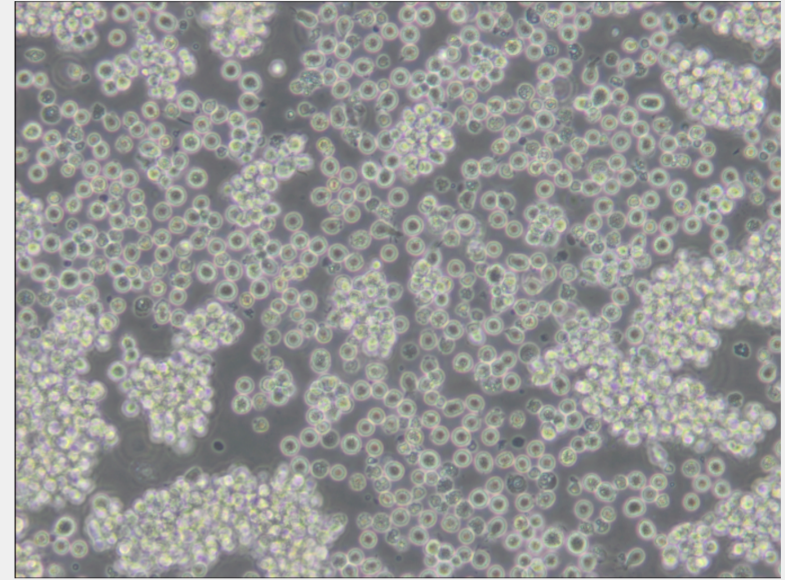
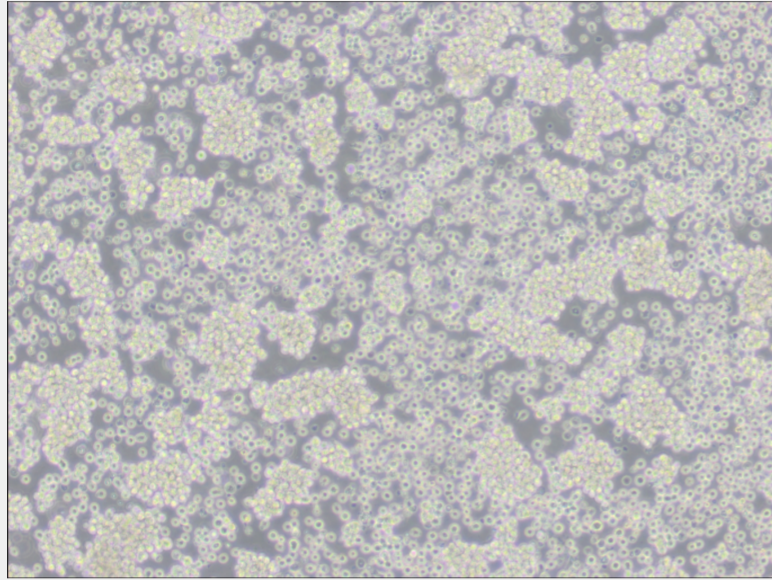
Cultures can be maintained by the addition of fresh medium or replacement of medium. Alternatively, cultures can be established by centrifugation with subsequent resuspension at 1 to 2×10<sup>5</sup> viable cells/ml. Maintain cell density between 1×10<sup>5</sup> and 1×10<sup>6</sup> viable cells/ml.

---

## Product Description

These cells are EBNA positive. The cells are partially resistant to poliovirus and vesicular stomatitis viruses. ATCC confirmed this line tested positive for the presence of Epstein Barr virus(EBV) viral DNA sequences via PCR.





All products are for RESEARCH USE ONLY. Not for diagnostic & therapeutic purposes!