

PK-15

Catalog No: tcel187



Available Sizes

Size: 1×10⁶cells/t25culturebottle



Specifications

Application:

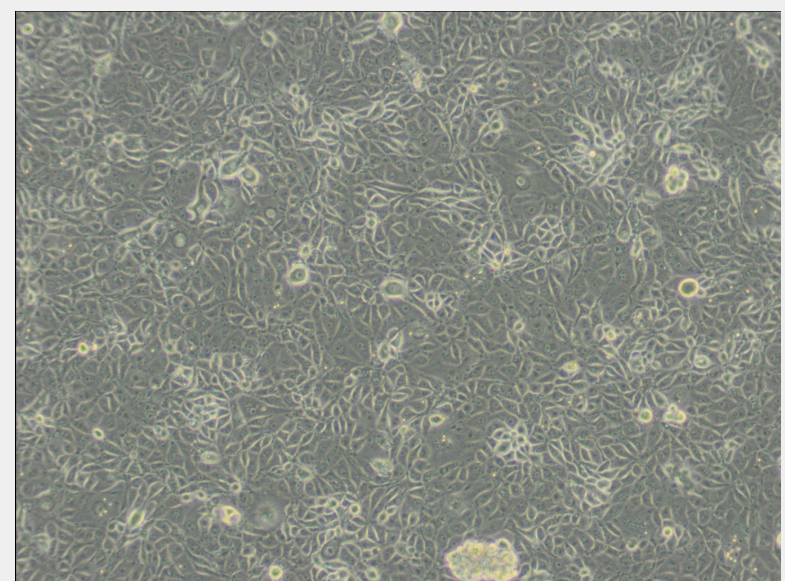
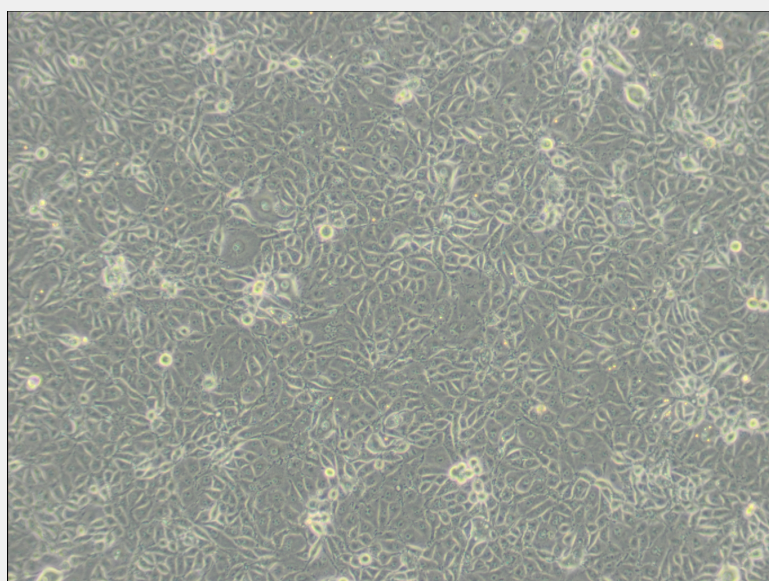
transfection host

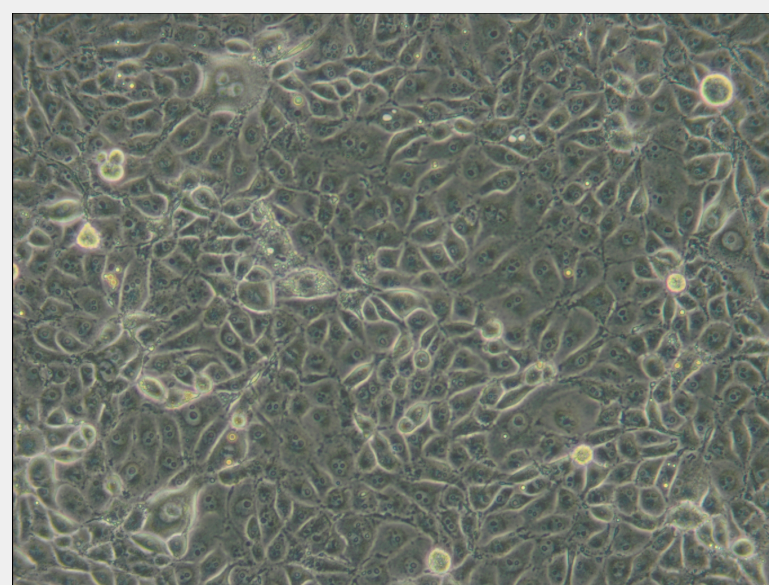
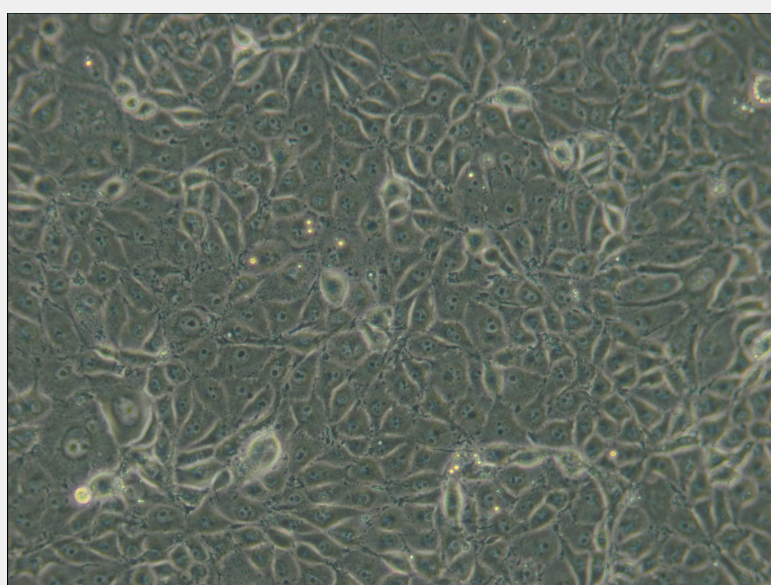
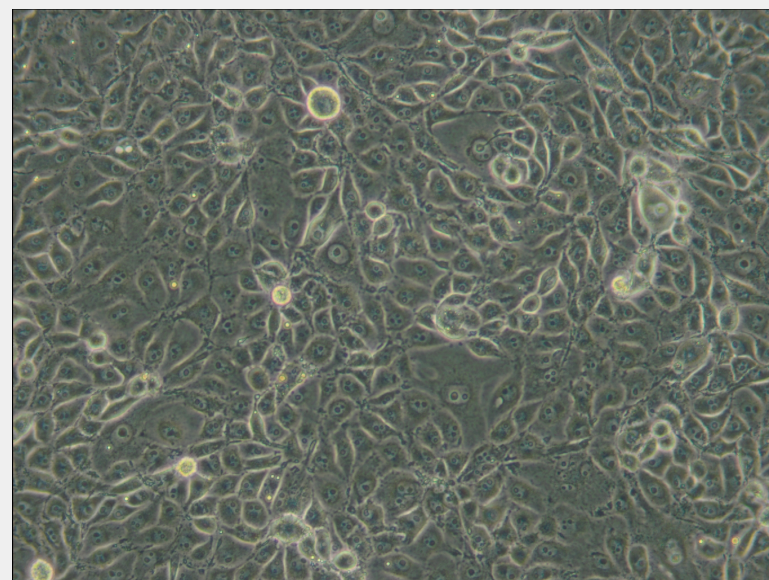
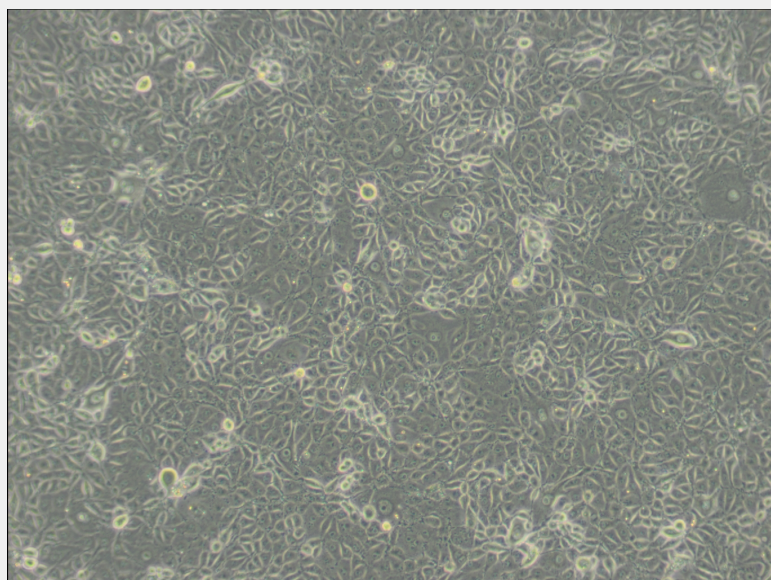
Subculturing:

Remove and discard culture medium. Briefly rinse the cell layer with DPBS solution to remove all traces of serum that contains trypsin inhibitor. Add 1.0 to 2.0 mL of Trypsin-EDTA solution to flask and observe cells under an inverted microscope until cell layer is dispersed (usually within 2 to 3 minutes). Cells that are difficult to detach may be placed at 37°C to facilitate dispersal. Add 4.0 to 6.0 mL of complete growth medium and aspirate cells by gently pipetting. Add appropriate aliquots of the cell suspension to new culture vessels.

Product Description

The presence of a porcine papovavirus in PK-15 cells has been reported in cells obtained from multiple sources including the ATCC. The Foreign Animal Disease Diagnostic Laboratory of the US Department of Agriculture has determined that ATCC CCL-33 is not infected with Hog cholera virus or African swine fever virus, and uses this line to screen for those viruses. The cell line harbors an endogenous C-type retrovirus. The cells are positive for porcine circovirus(PCV) antigens. The cells are positive for keratin by immunoperoxidase staining.





All products are for RESEARCH USE ONLY. Not for diagnostic & therapeutic purposes!