

OK

Catalog No: tcel175



Available Sizes

Size: 1×10^6 cells/t25culturebottle



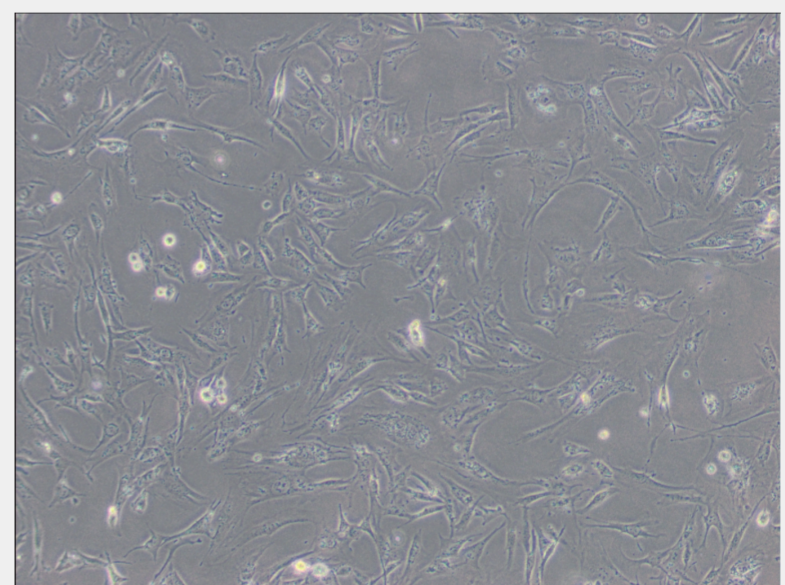
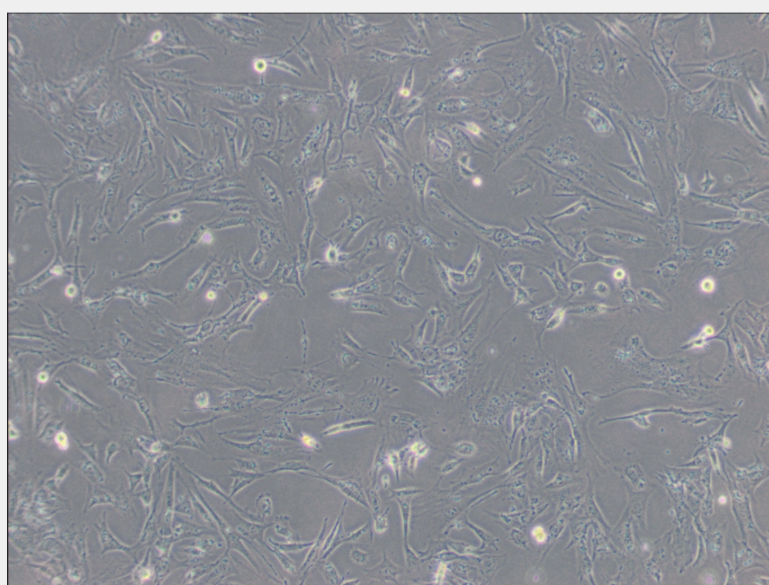
Specifications

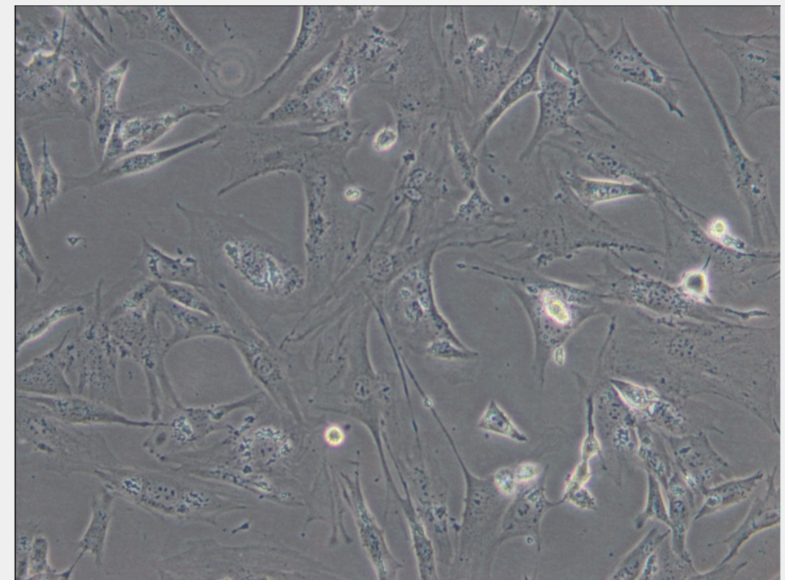
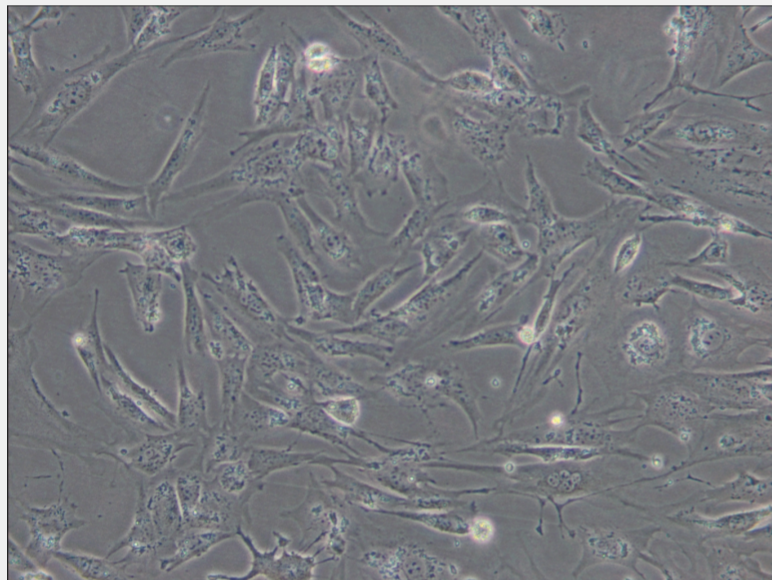
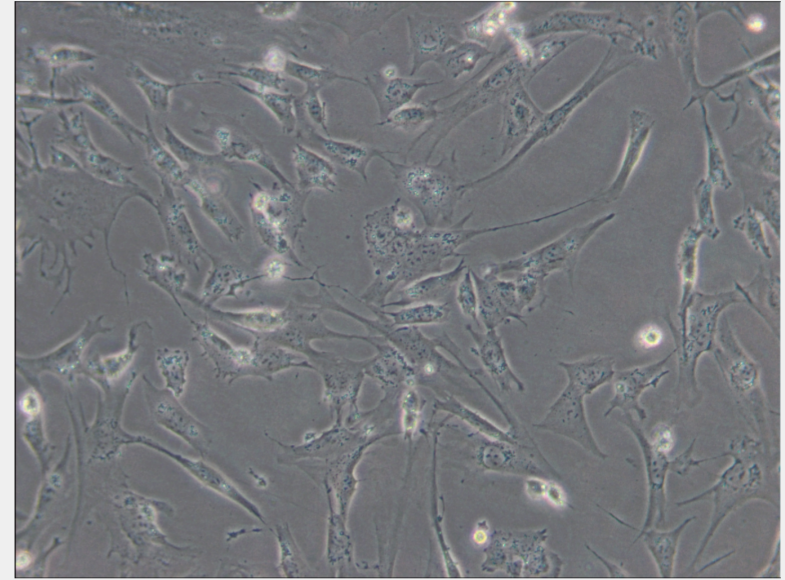
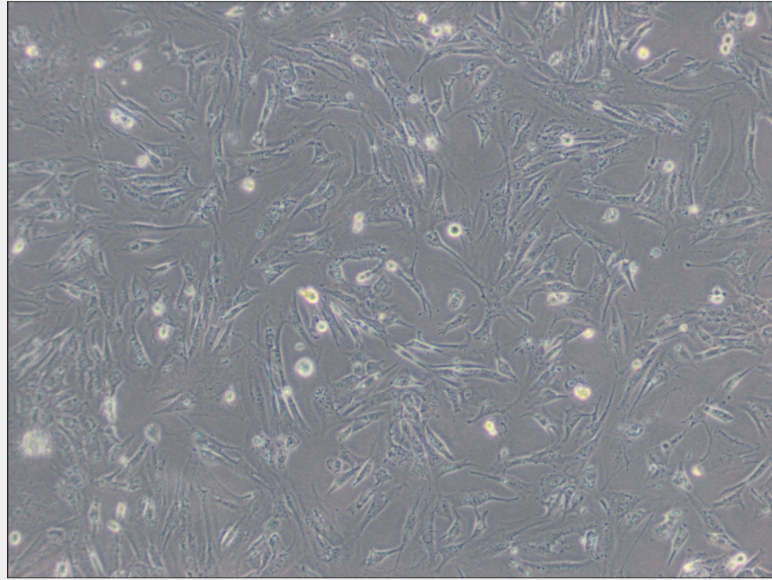
Application:

This cell line is a suitable transfection host. This line was originally developed for use as a source of X chromosomes in a study of X inactivation, and was subsequently found to be an excellent cell culture model for the kidney proximal tubule epithelium.

Subculturing:

Remove and discard culture medium. Briefly rinse the cell layer with DPBS solution to remove all traces of serum that contains trypsin inhibitor. Add 1.0 to 2.0 mL of Trypsin-EDTA solution to flask and observe cells under an inverted microscope until cell layer is dispersed (usually within 2 to 3 minutes). Cells that are difficult to detach may be placed at 37°C to facilitate dispersal. Add 4.0 to 6.0 mL of complete growth medium and aspirate cells by gently pipetting. Add appropriate aliquots of the cell suspension to new culture vessels.





All products are for RESEARCH USE ONLY. Not for diagnostic & therapeutic purposes!