

# NAMALWA

**Catalog No: tcel164**



## Available Sizes

---

**Size:** 1×10<sup>6</sup>cells/t25culturebottle

---



## Specifications

---

**Application:**

transfection

---

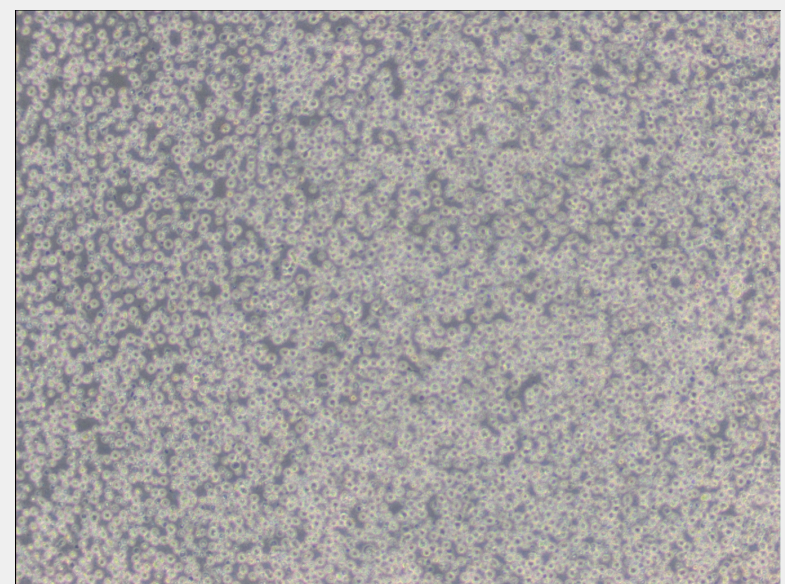
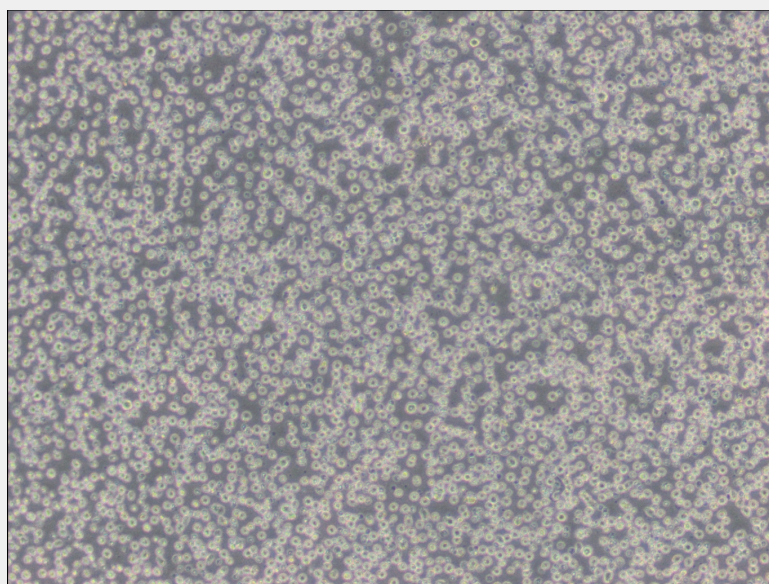
**Subculturing:**

Cultures can be maintained by the addition of fresh medium or replacement of medium. Alternatively, cultures can be established by centrifugation with subsequent resuspension at 1 to 2×10<sup>5</sup> viable cells/ml. Maintain cell density between 1×10<sup>5</sup> and 1×10<sup>6</sup> viable cells/ml.

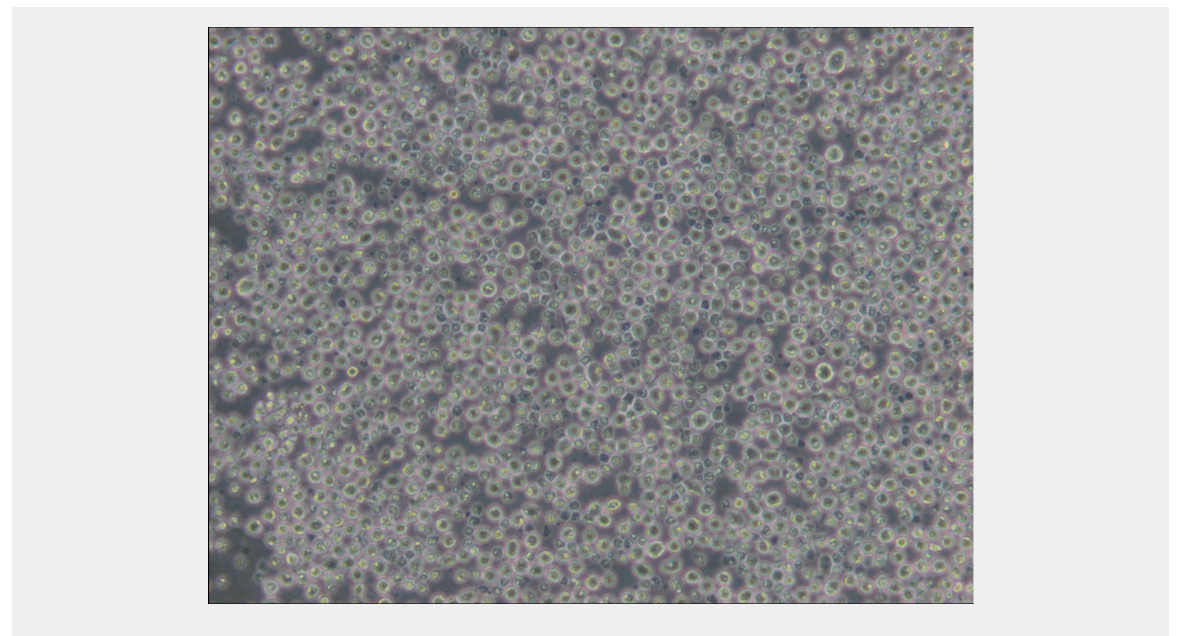
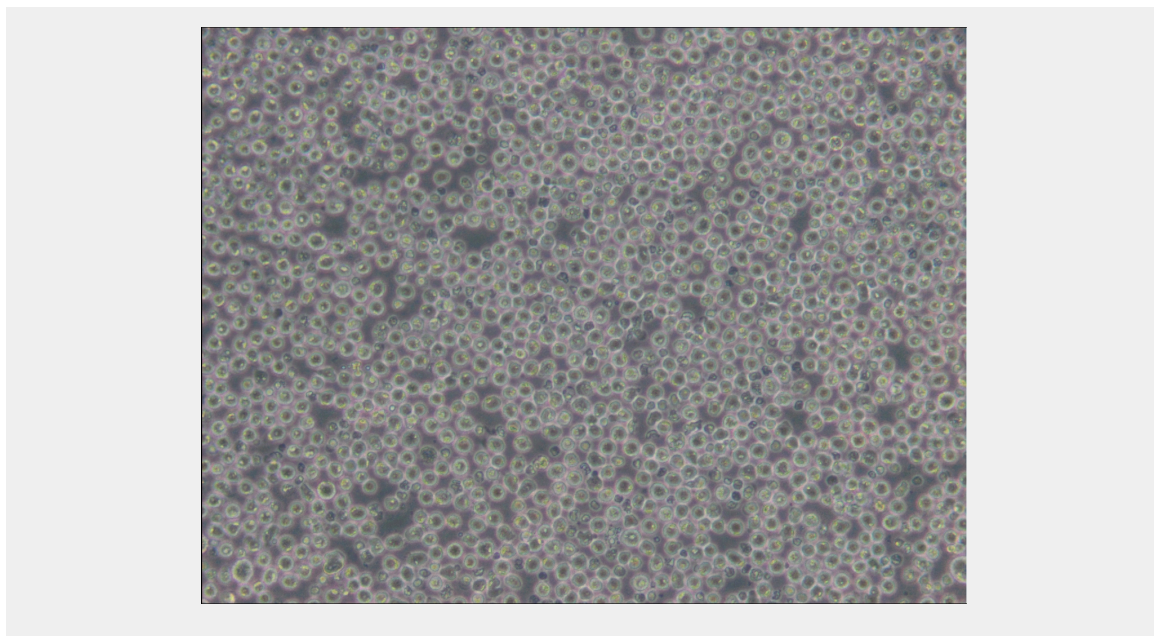
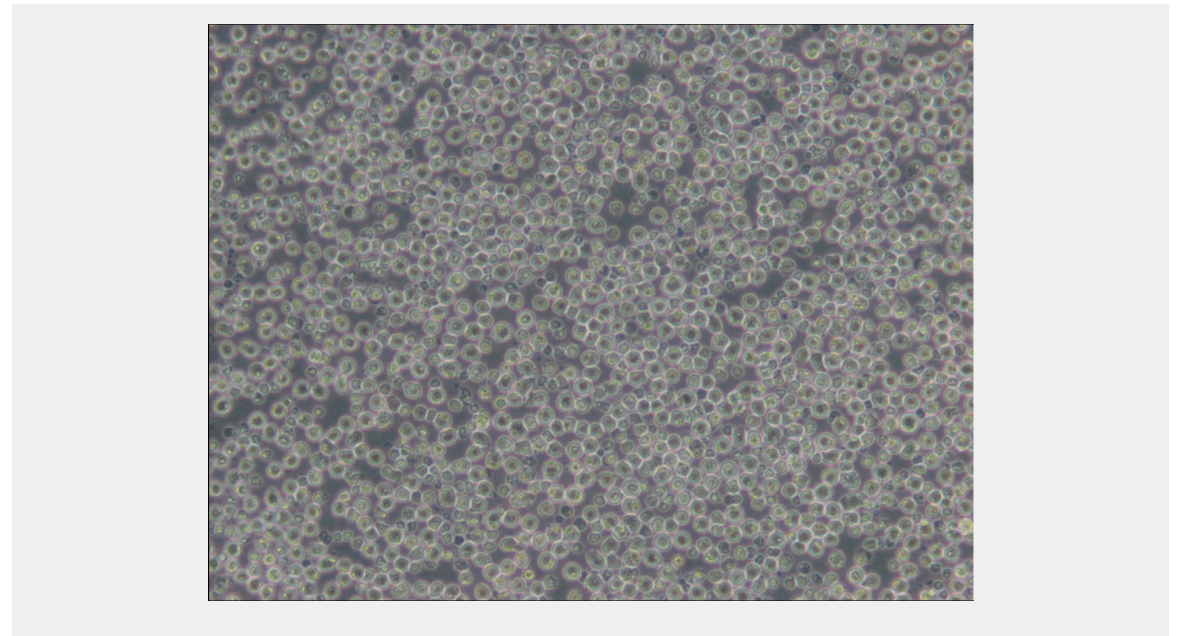
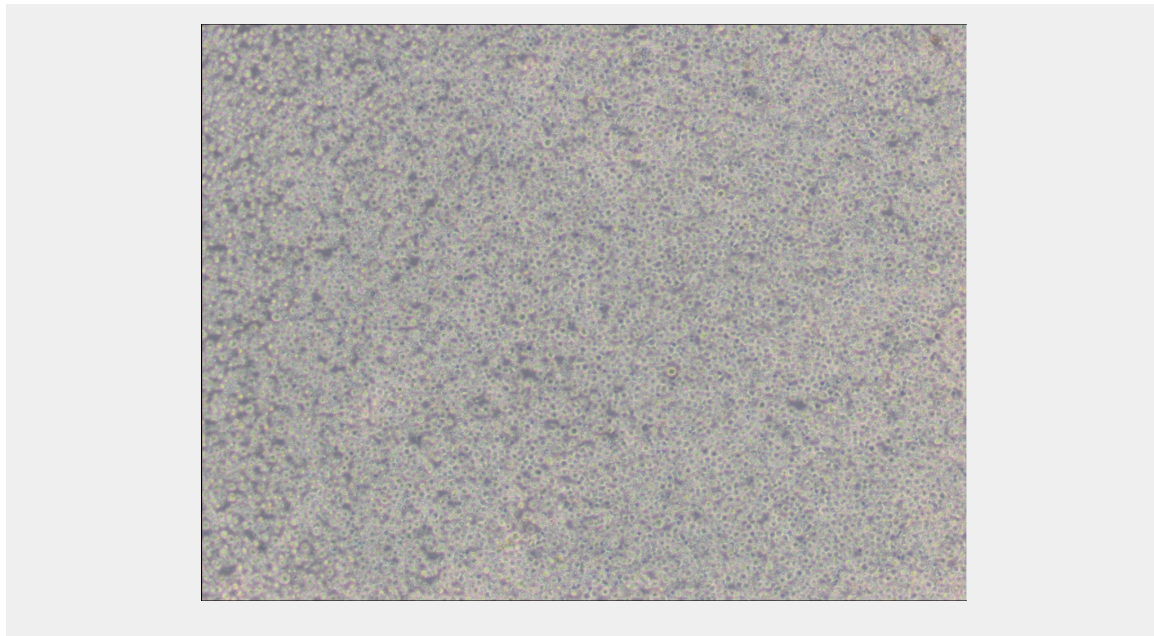
---

## Product Description

The cells contain the Epstein-Barr virus(EBV) genome.







All products are for RESEARCH USE ONLY. Not for diagnostic & therapeutic purposes!