

MS1

Catalog No: tcel162



Available Sizes

Size: 1×10⁶cells/t25culturebottle



Specifications

Application:

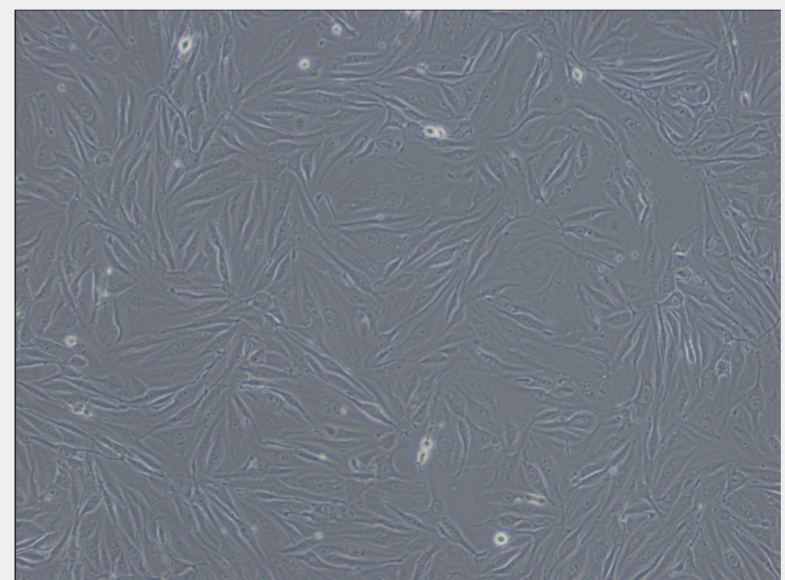
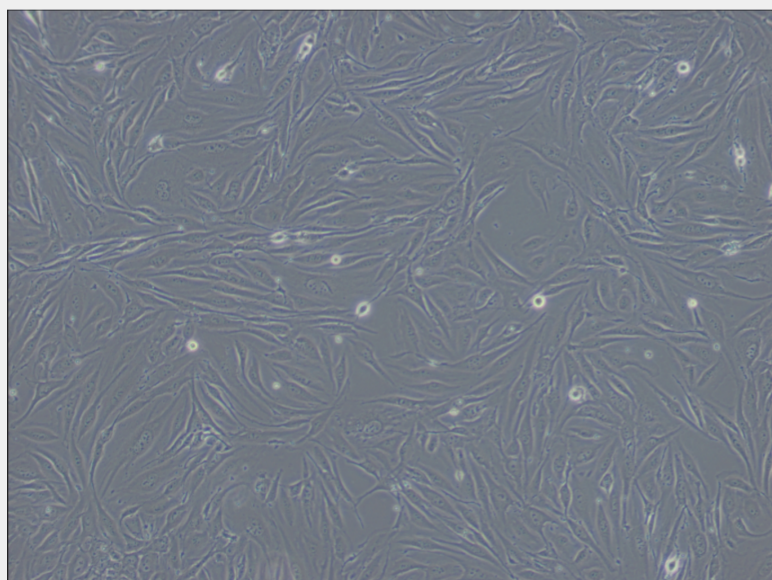
This cell line is useful for the study of signal transduction of angiogenic factors. This cell line is the only line known that can give rise to benign hemangiomas.

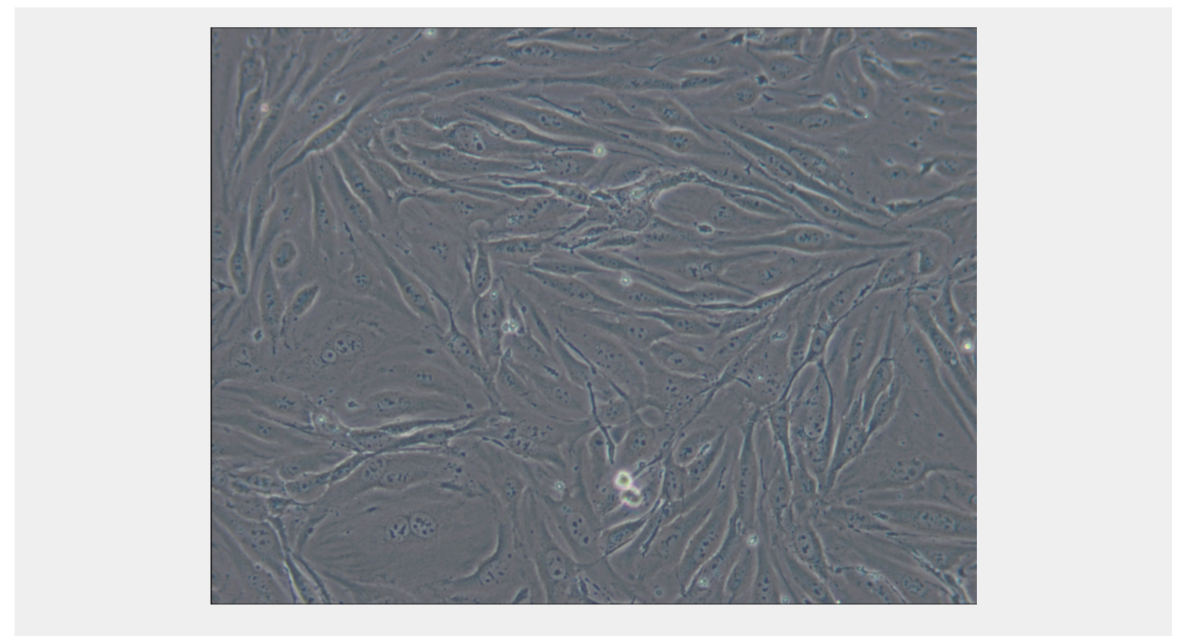
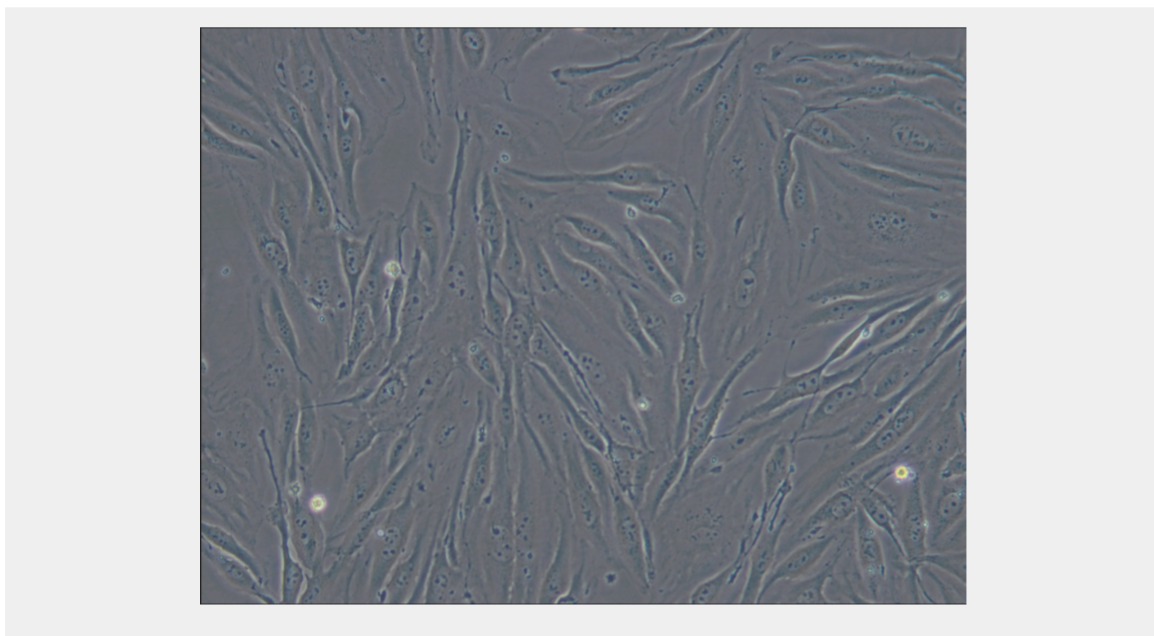
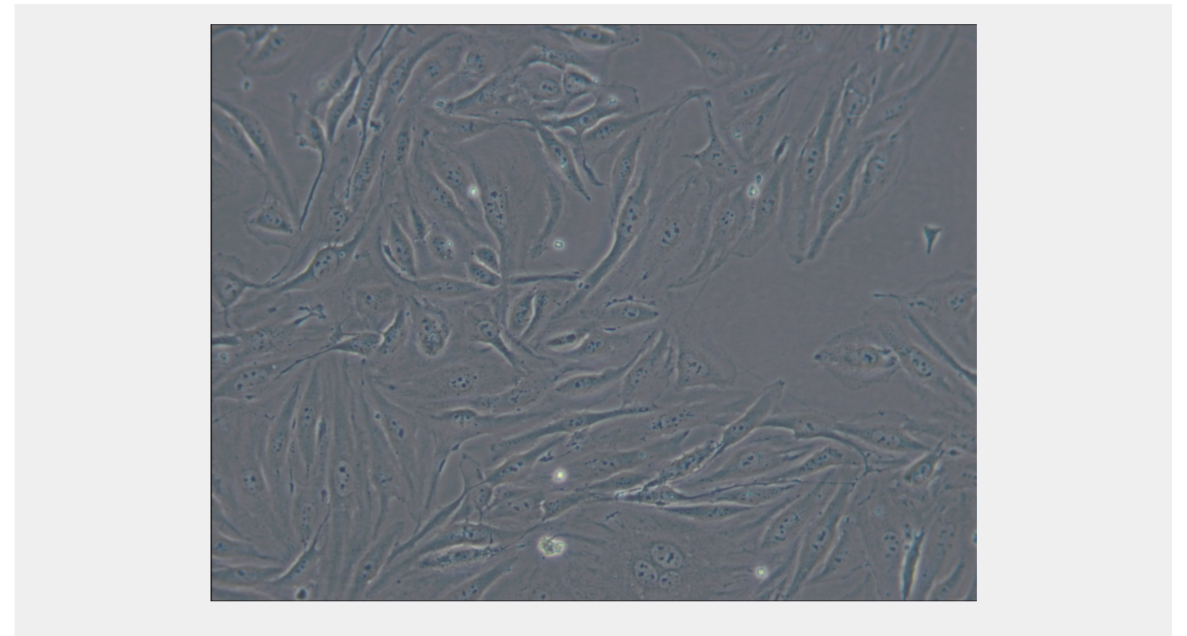
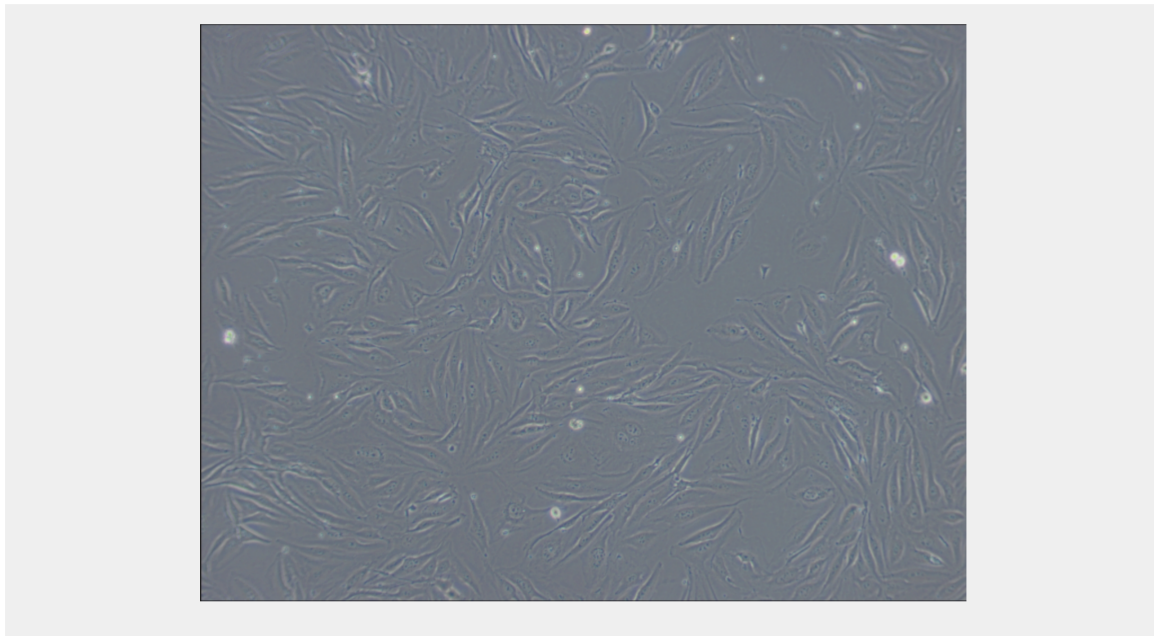
Subculturing:

Remove and discard culture medium. Briefly rinse the cell layer with DPBS solution to remove all traces of serum that contains trypsin inhibitor. Add 1.0 to 2.0 mL of Trypsin-EDTA solution to flask and observe cells under an inverted microscope until cell layer is dispersed (usually within 2 to 3 minutes). Cells that are difficult to detach may be placed at 37°C to facilitate dispersal. Add 4.0 to 6.0 mL of complete growth medium and aspirate cells by gently pipetting. Add appropriate aliquots of the cell suspension to new culture vessels.

Product Description

The line retains many properties of endothelial cells including uptake of acetylated LDL and expression of both Factor VIII related antigen and VEGF receptor. The expression of high levels of the tissue inhibitor of bioreactive matrix metalloproteinase makes the behavior of this cell line more like that of normal macrophages from some commonly used strains of mice.





All products are for RESEARCH USE ONLY. Not for diagnostic & therapeutic purposes!