

MLTC-1

Catalog No: tcel159



Available Sizes

Size: 1×10⁶cells/t25culturebottle



Specifications

Application:

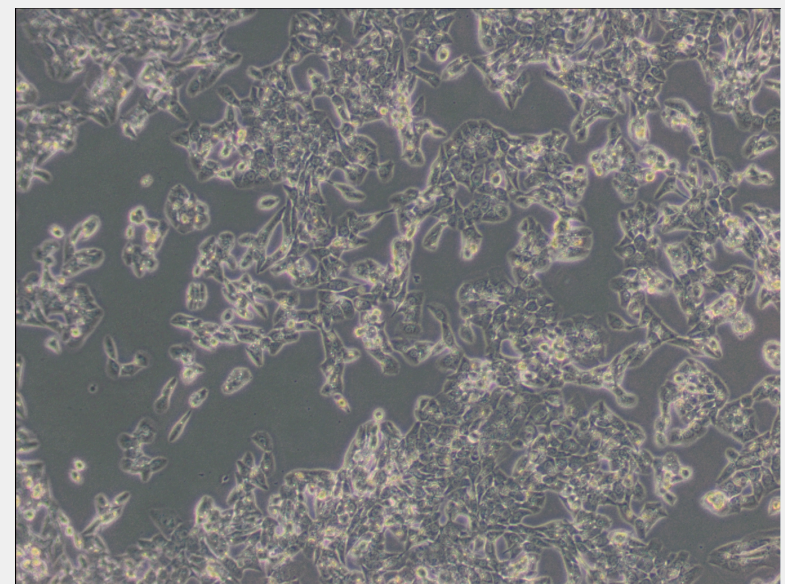
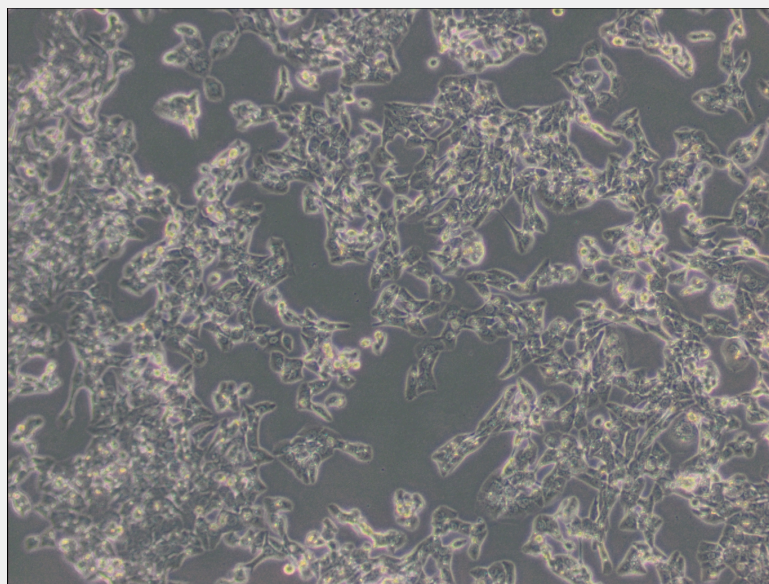
transfection

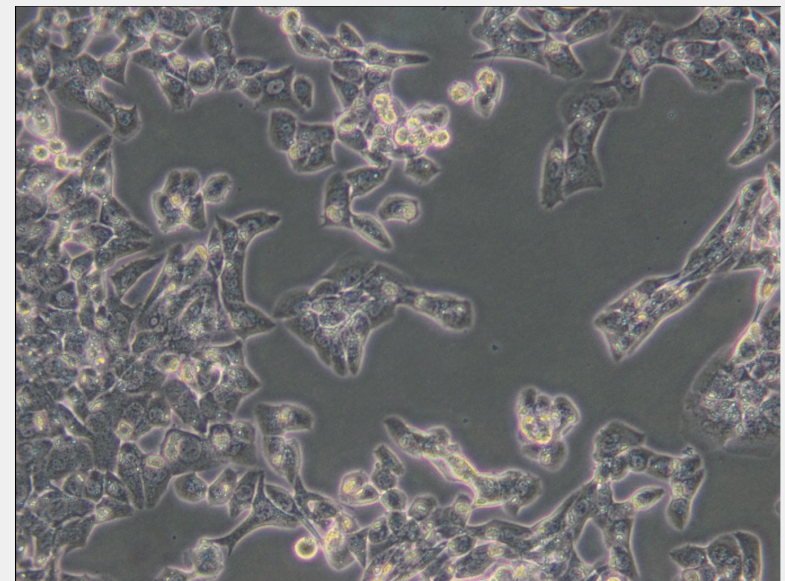
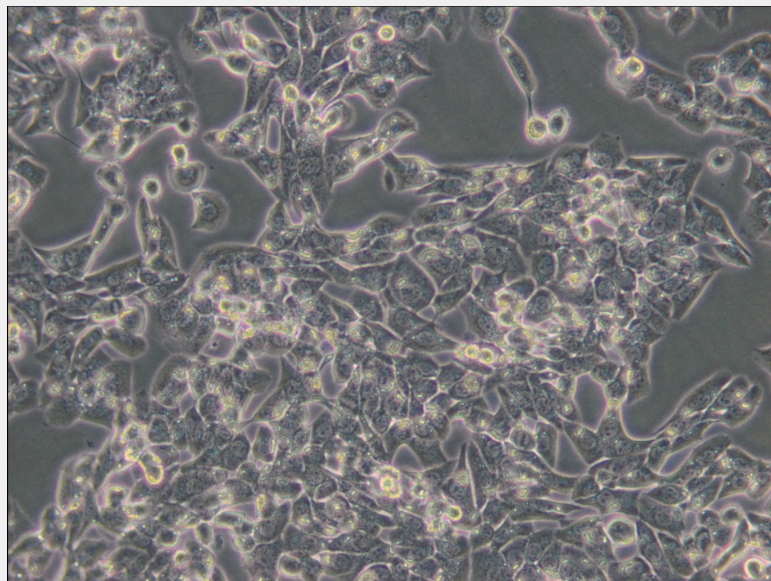
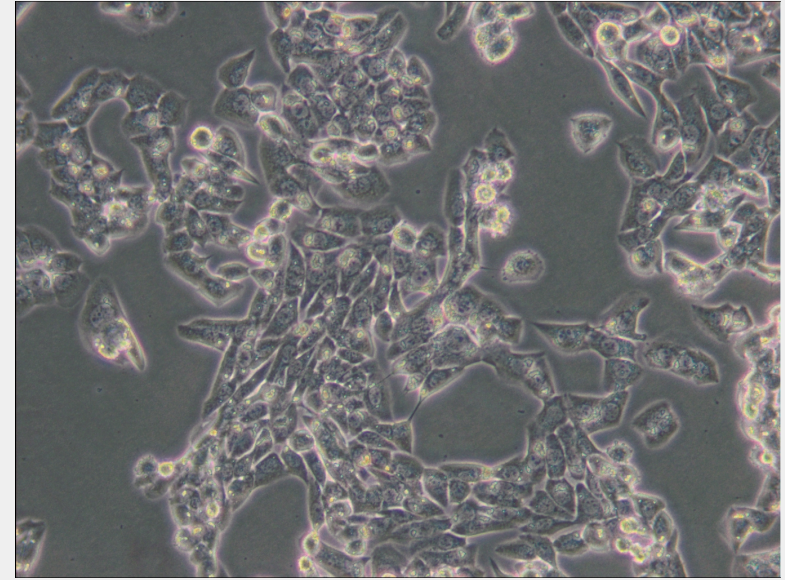
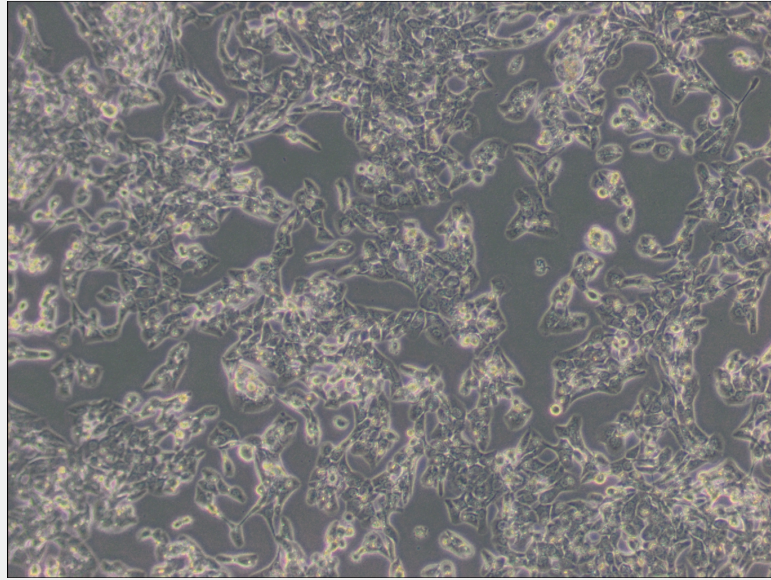
Subculturing:

Remove and discard culture medium. Briefly rinse the cell layer with DPBS solution to remove all traces of serum that contains trypsin inhibitor. Add 1.0 to 2.0 mL of Trypsin-EDTA solution to flask and observe cells under an inverted microscope until cell layer is dispersed (usually within 2 to 3 minutes). Cells that are difficult to detach may be placed at 37°C to facilitate dispersal. Add 4.0 to 6.0 mL of complete growth medium and aspirate cells by gently pipetting. Add appropriate aliquots of the cell suspension to new culture vessels.

Product Description

The cells retain the hormonal responsiveness of the original tumor. Membrane adenylyl cyclase activity is stimulated by treatment with human chorionic gonadotropin (hCG), luteinizing hormone, cholera toxin, sodium fluoride and guanylyl-5'-ylimidodiphosphate, and produce progesterone in response to hCG. Ref





All products are for RESEARCH USE ONLY. Not for diagnostic & therapeutic purposes!