

# MG-63

Catalog No: tcel157



## Available Sizes

**Size:** 1×10<sup>6</sup>cells/t25culturebottle



## Specifications

### Application:

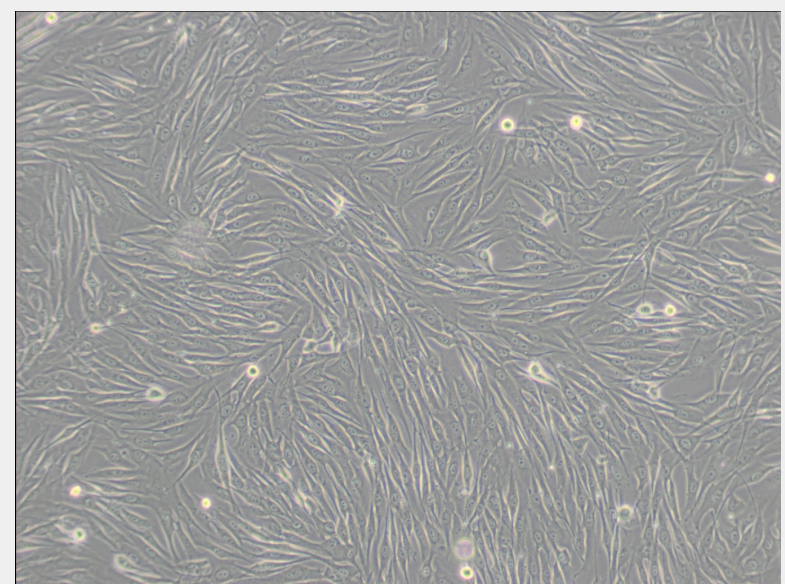
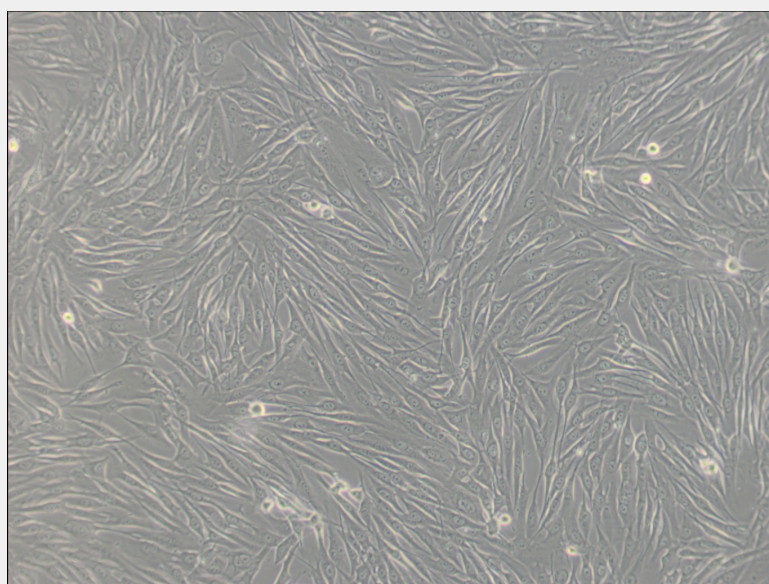
transfection

### Subculturing:

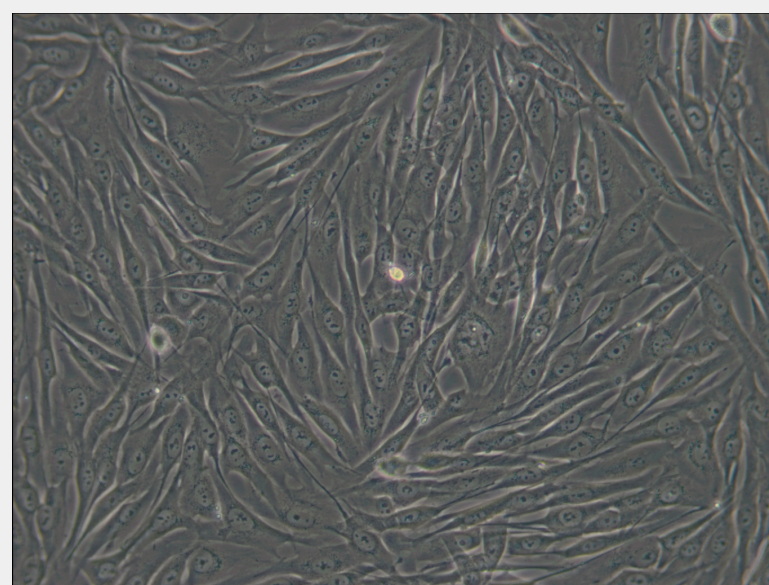
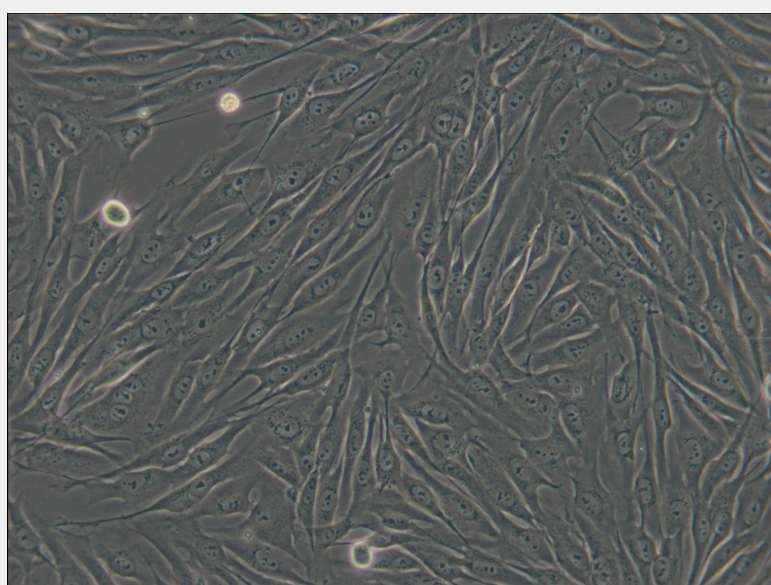
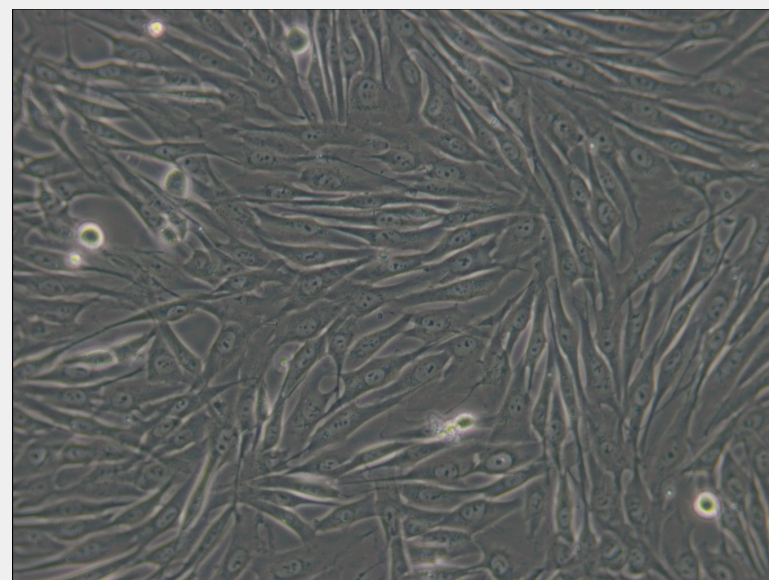
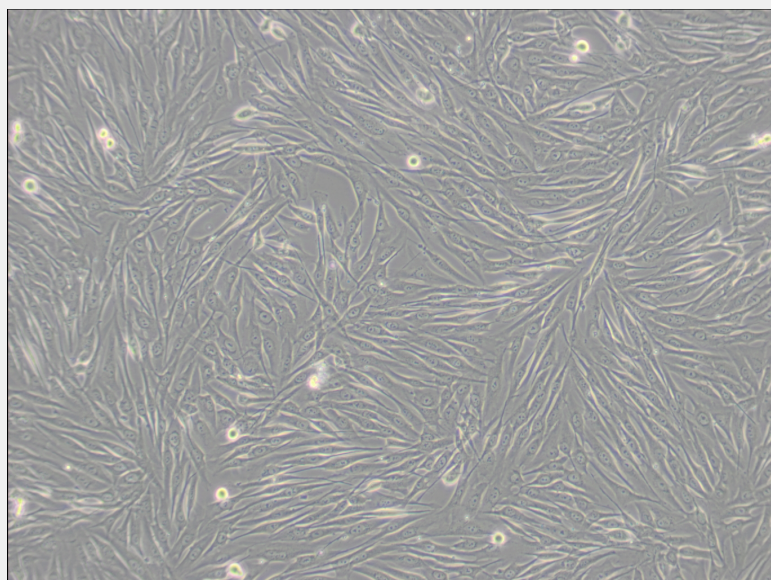
Remove and discard culture medium. Briefly rinse the cell layer with DPBS solution to remove all traces of serum that contains trypsin inhibitor. Add 1.0 to 2.0 mL of Trypsin-EDTA solution to flask and observe cells under an inverted microscope until cell layer is dispersed (usually within 2 to 3 minutes). Cells that are difficult to detach may be placed at 37°C to facilitate dispersal. Add 4.0 to 6.0 mL of complete growth medium and aspirate cells by gently pipetting. Add appropriate aliquots of the cell suspension to new culture vessels.

## Product Description

High levels of interferon production can be induced using polyinosinic-polycytidylic acid, cycloheximide and actinomycin D.







All products are for RESEARCH USE ONLY. Not for diagnostic & therapeutic purposes!