

MDBK [NBL-1]

Catalog No: tcel153



Available Sizes

Size: 1×10⁶cells/t25culturebottle



Specifications

Application:

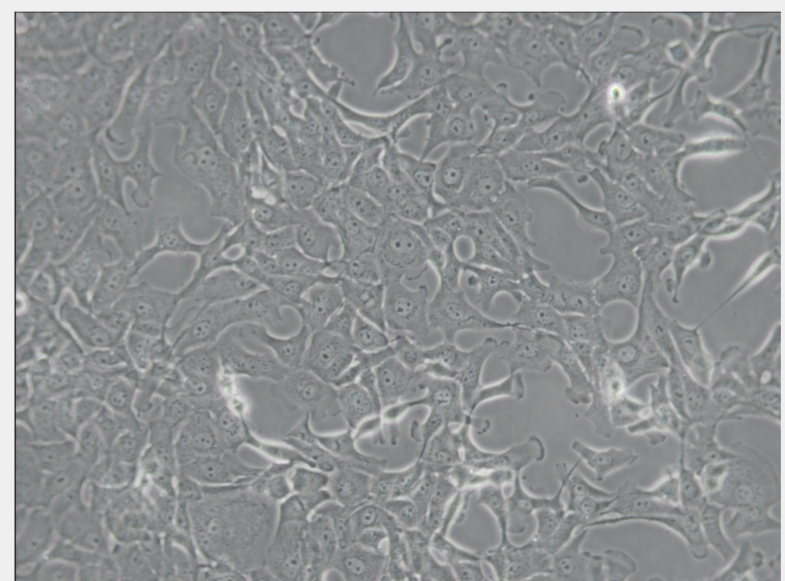
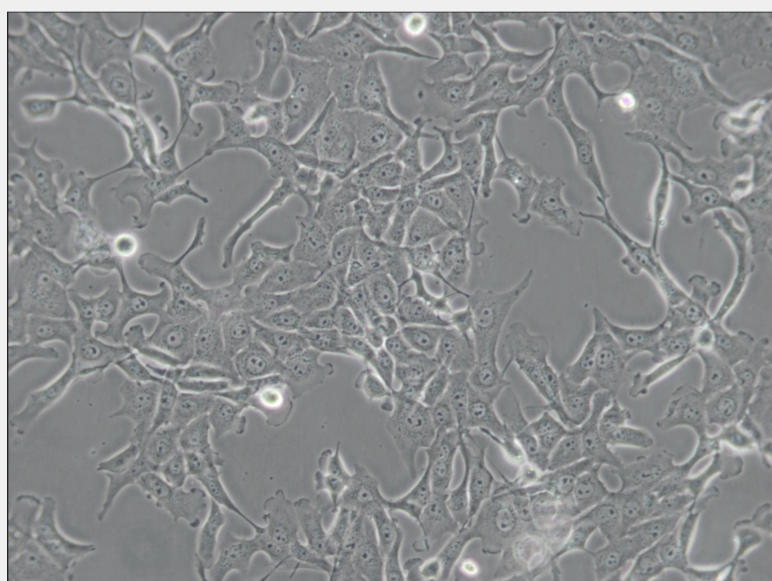
transfection

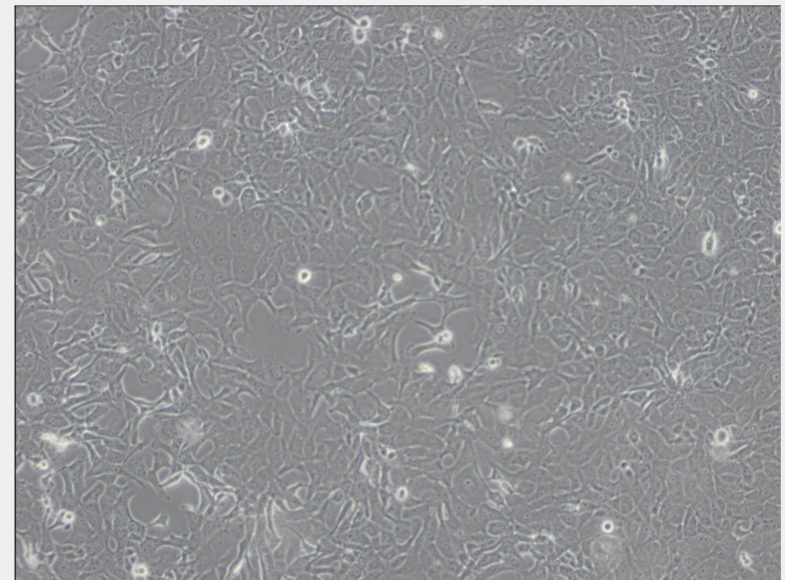
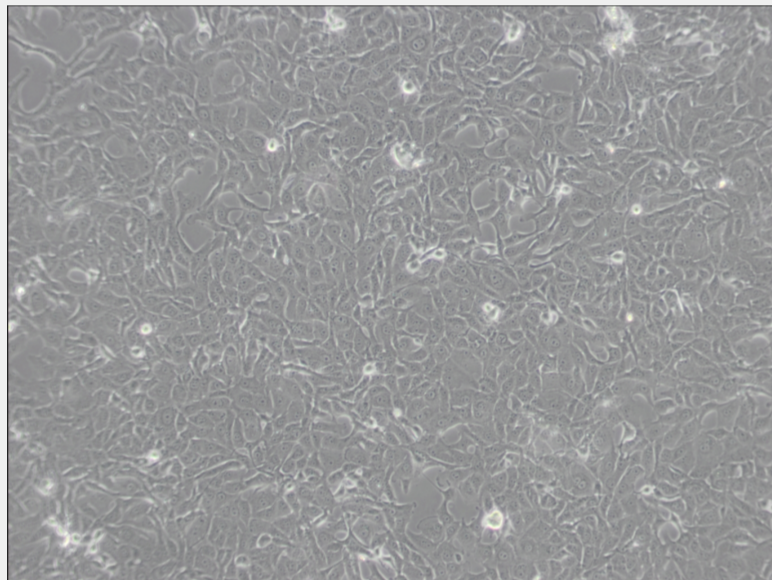
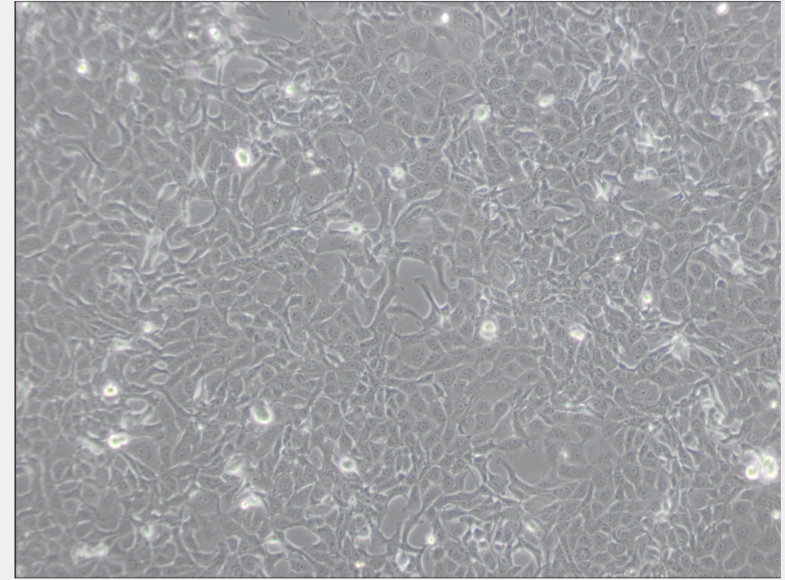
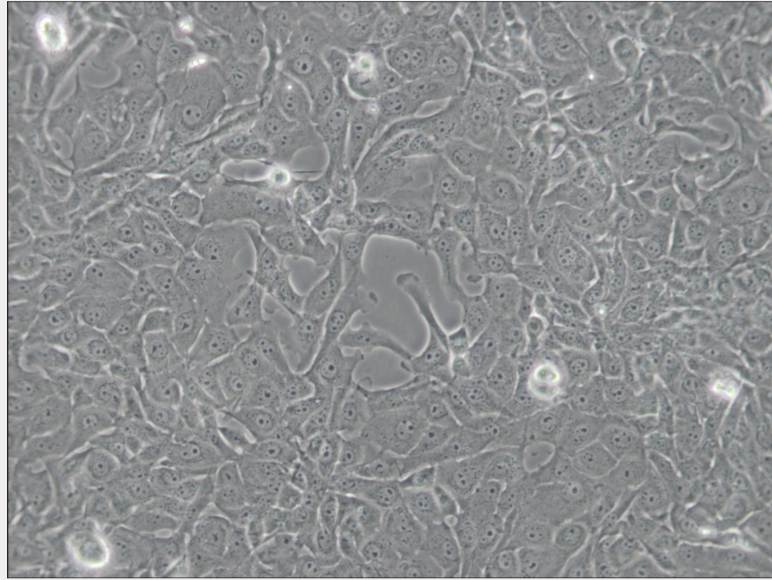
Subculturing:

Remove and discard culture medium. Briefly rinse the cell layer with DPBS solution to remove all traces of serum that contains trypsin inhibitor. Add 1.0 to 2.0 mL of Trypsin-EDTA solution to flask and observe cells under an inverted microscope until cell layer is dispersed (usually within 2 to 3 minutes). Cells that are difficult to detach may be placed at 37°C to facilitate dispersal. Add 4.0 to 6.0 mL of complete growth medium and aspirate cells by gently pipetting. Add appropriate aliquots of the cell suspension to new culture vessels.

Product Description

MDBK(NBL-1) bovine kidney cells were found to be positive for bovine viral diarrhea virus(BVDV), following a recent investigation by ATCC(Dec. 2015). Testing for BVDV was performed in compliance with the Code of Federal Regulations, Title 9, Section 113. 52(E &F) using virus-specific fluorescent antibody(FA) technique as well as non-specific tests for hemadsorption and cytopathic effects(CPE). Samples were found to be positive for BVDV by FA. Hemadsorption and CPE were not observed in the sample inoculated cultures.





All products are for RESEARCH USE ONLY. Not for diagnostic & therapeutic purposes!