

MCF7 [MCF-7]

Catalog No: tcel149



Available Sizes

Size: 1×10⁶cells/t25culturebottle



Specifications

Application:

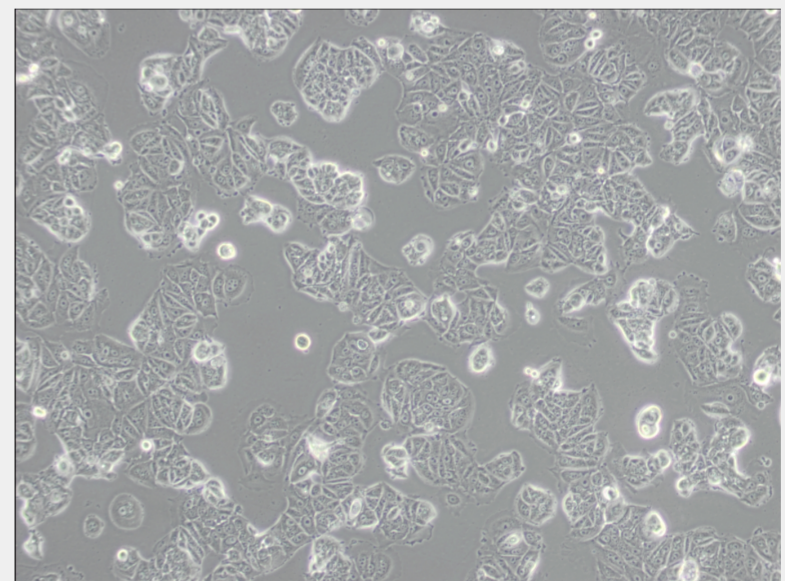
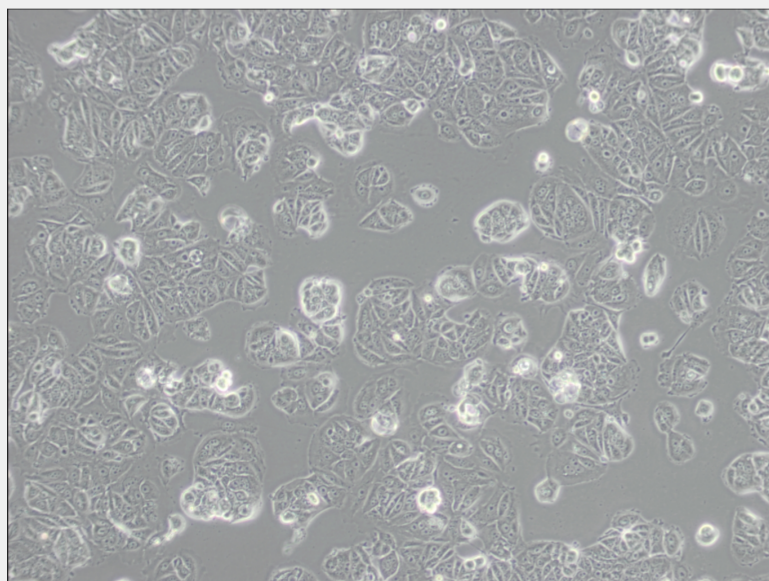
transfection

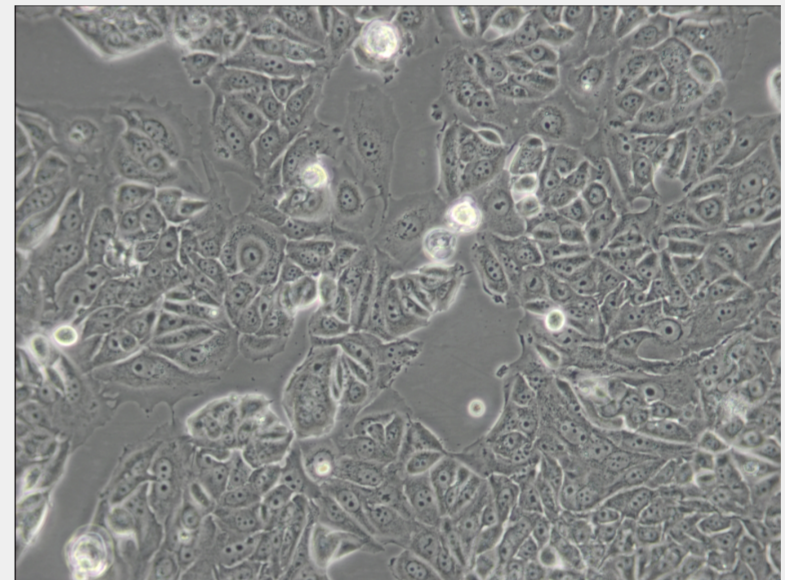
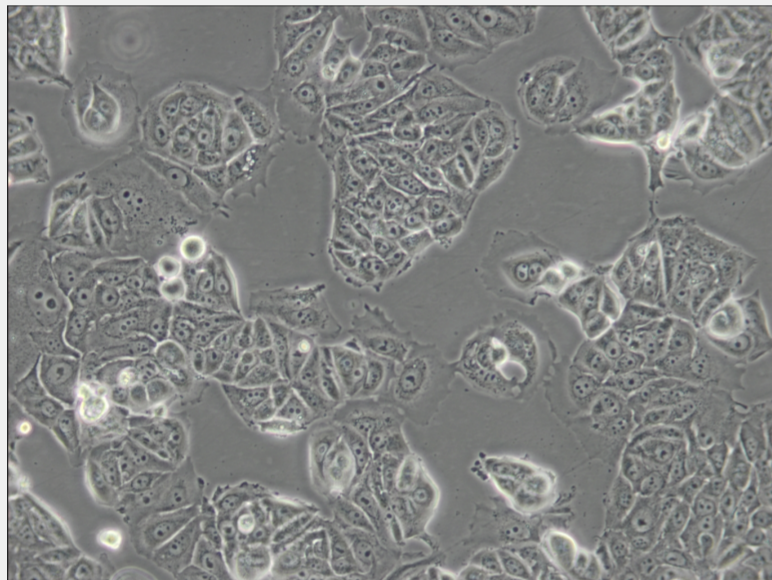
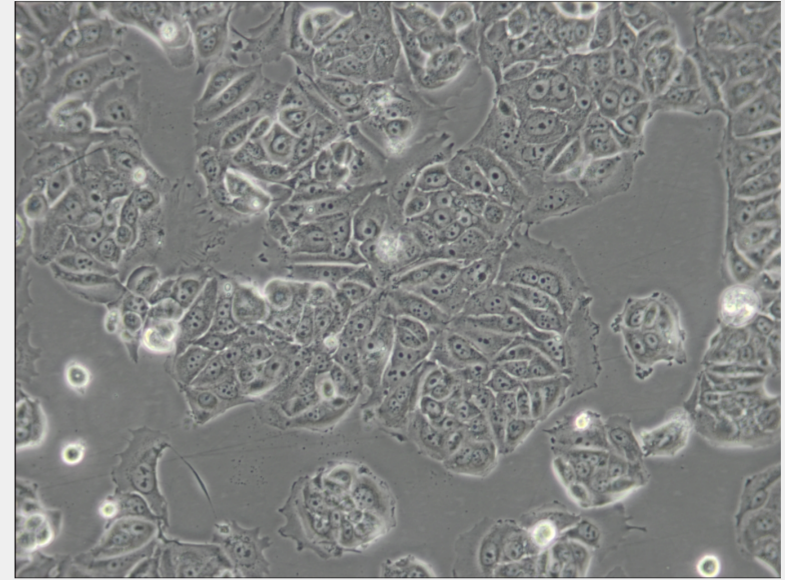
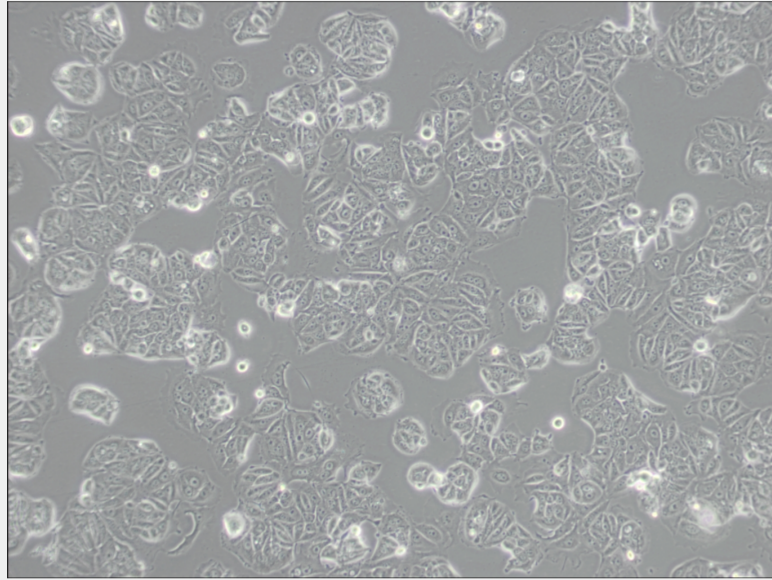
Subculturing:

Remove and discard culture medium. Briefly rinse the cell layer with DPBS solution to remove all traces of serum that contains trypsin inhibitor. Add 1.0 to 2.0 mL of Trypsin-EDTA solution to flask and observe cells under an inverted microscope until cell layer is dispersed (usually within 2 to 3 minutes). Cells that are difficult to detach may be placed at 37°C to facilitate dispersal. Add 4.0 to 6.0 mL of complete growth medium and aspirate cells by gently pipetting. Add appropriate aliquots of the cell suspension to new culture vessels.

Product Description

The MCF7 line retains several characteristics of differentiated mammary epithelium including ability to process Estradiol via cytoplasmic estrogen receptors and the capability of forming domes. The cells express the WNT7B oncogene. RefGrowth of MCF7 cells is inhibited by tumor necrosis factor alpha(TNF alpha). Secretion of IGFBP's can be modulated by treatment with anti-estrogens.





All products are for RESEARCH USE ONLY. Not for diagnostic & therapeutic purposes!