

KG-1

Catalog No: tcel132



Available Sizes

Size: 1×10⁶cells/t25culturebottle



Specifications

Application:

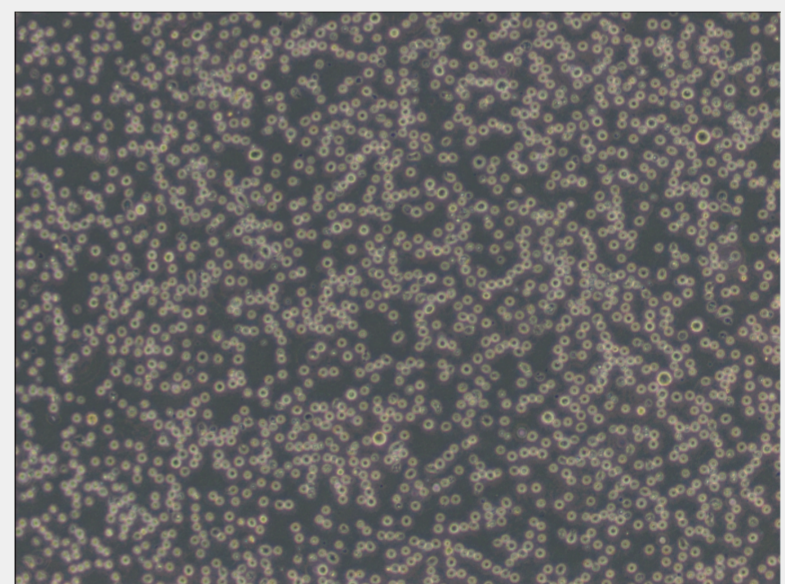
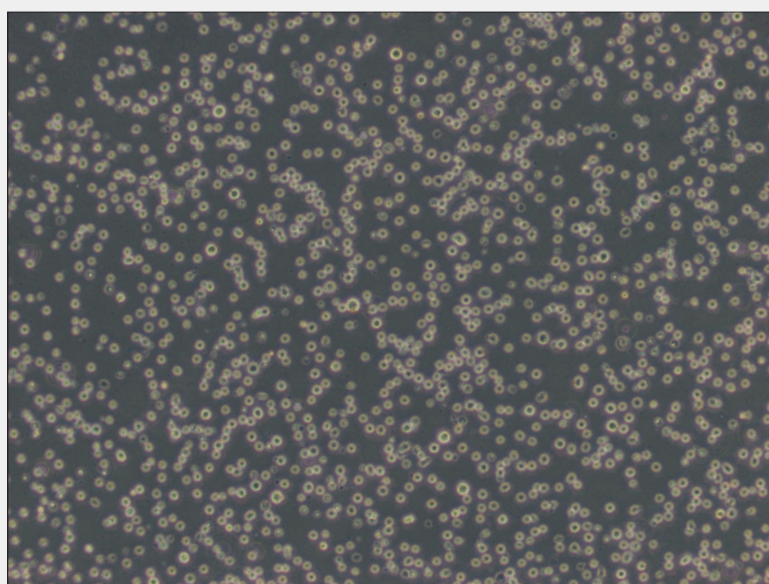
transfection

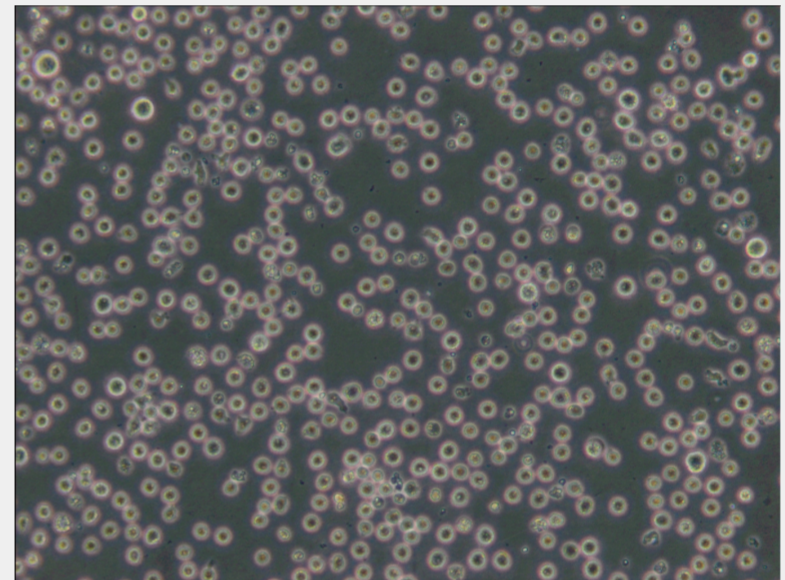
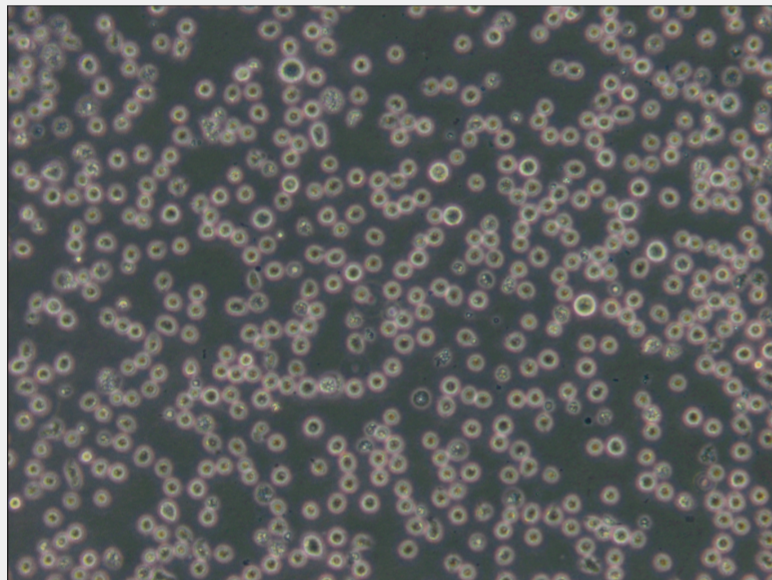
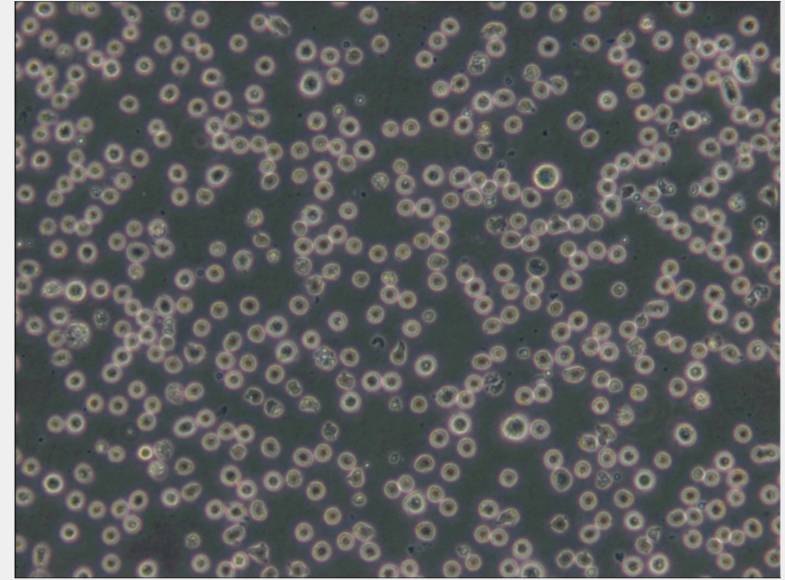
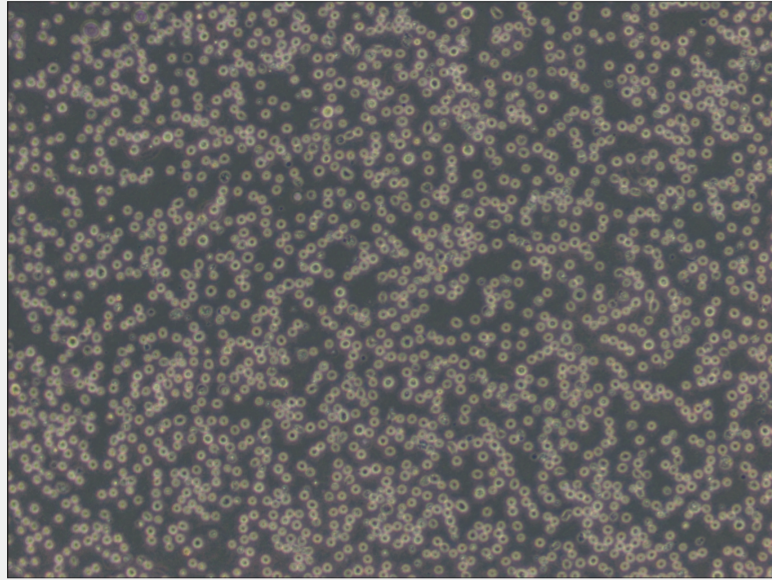
Subculturing:

Cultures can be maintained by the addition of fresh medium or replacement of medium. Alternatively, cultures can be established by centrifugation with subsequent resuspension at the subcultivation ratio of 1:2-1:3.

Product Description

KG-1 myeloblasts can differentiate into macrophages in the presence of phorbol esters.They show a good response to colony stimulating factor(CSF).The line is EBNA negative(EBNA-).





All products are for RESEARCH USE ONLY. Not for diagnostic & therapeutic purposes!