

KB

Catalog No: tcel131



Available Sizes

Size: 1×10⁶cells/t25culturebottle



Specifications

Application:

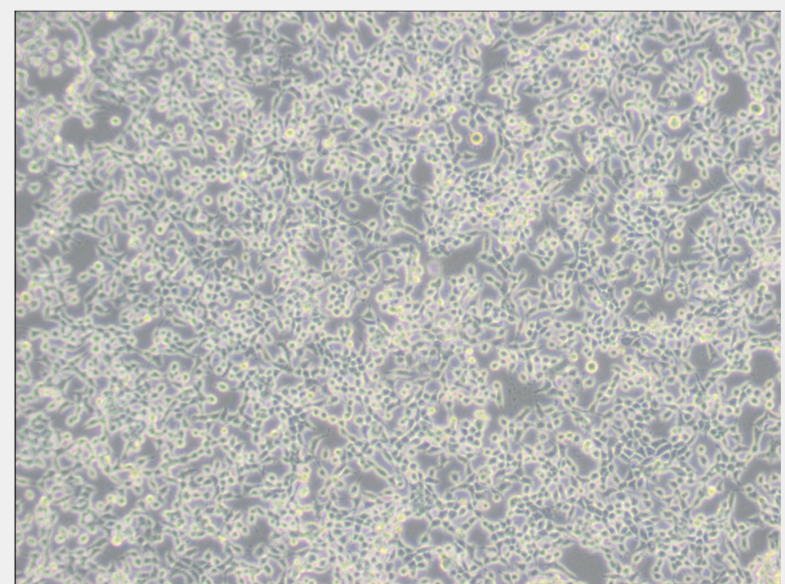
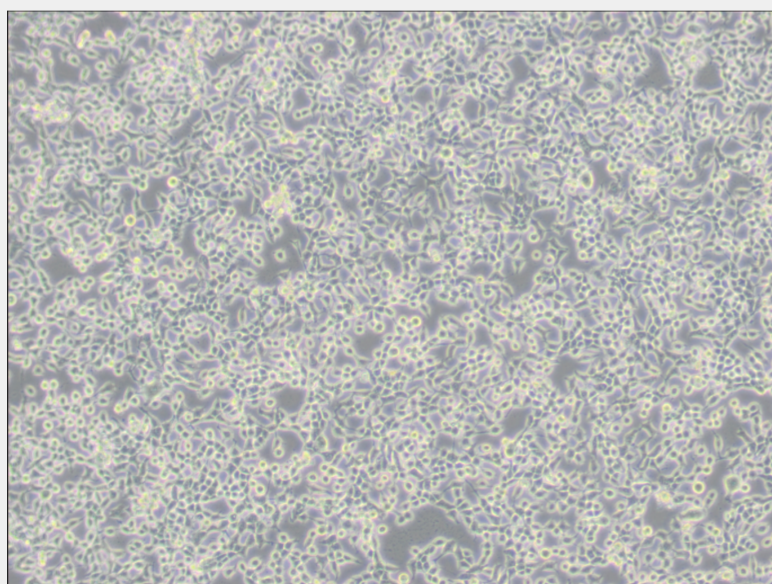
transfection

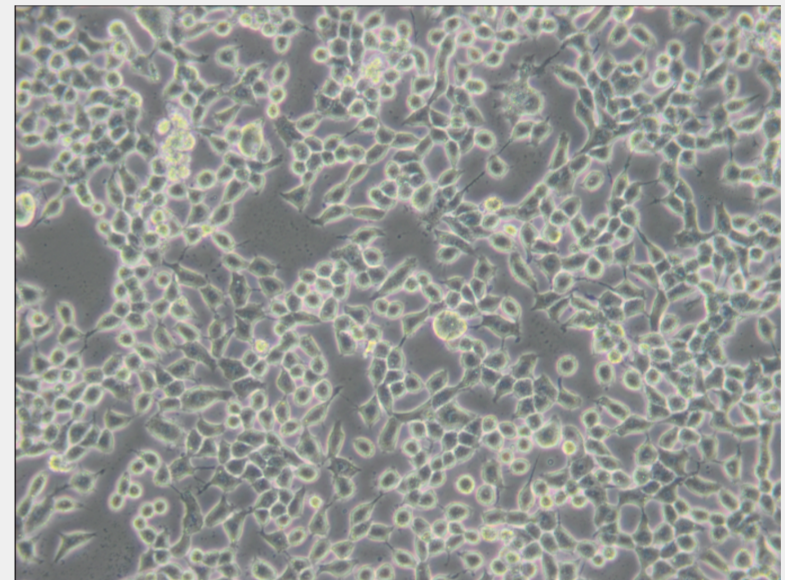
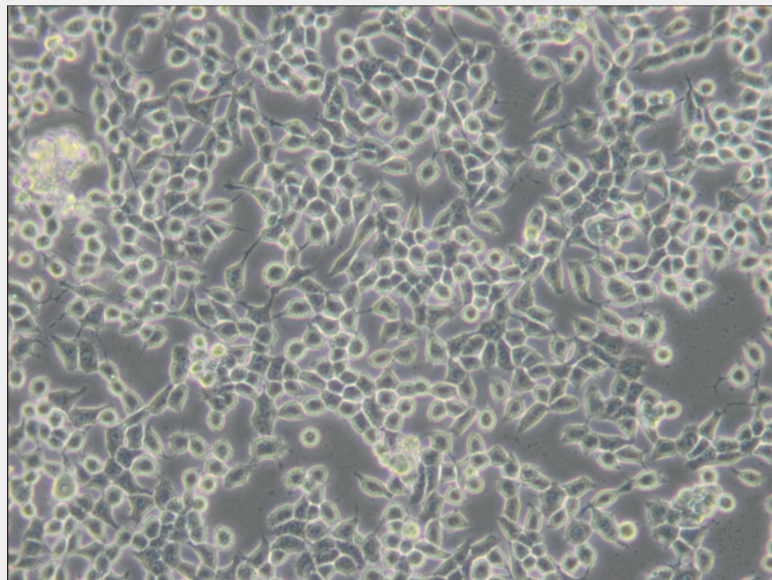
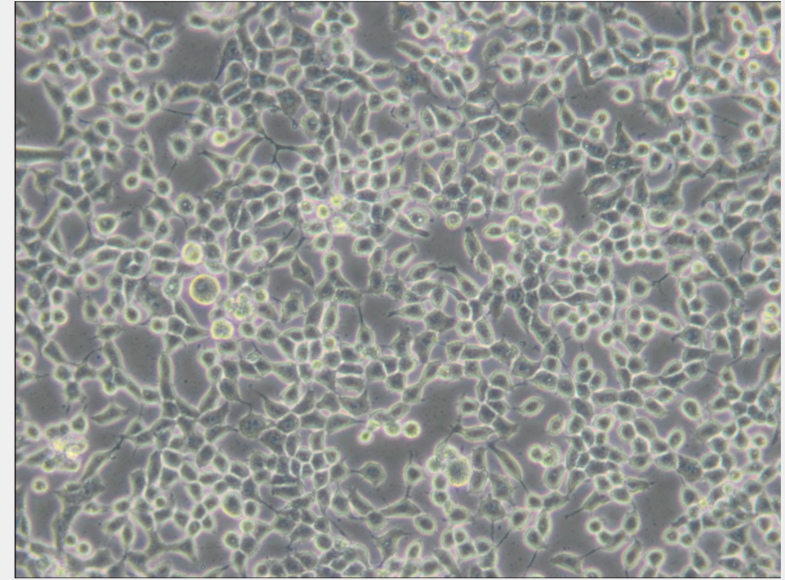
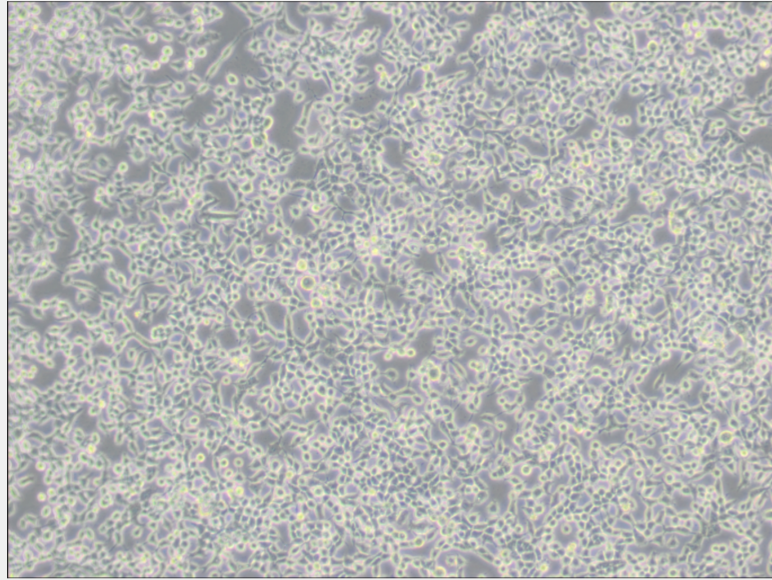
Subculturing:

Remove and discard culture medium. Briefly rinse the cell layer with DPBS solution to remove all traces of serum that contains trypsin inhibitor. Add 1.0 to 2.0 mL of Trypsin-EDTA solution to flask and observe cells under an inverted microscope until cell layer is dispersed (usually within 2 to 3 minutes). Cells that are difficult to detach may be placed at 37°C to facilitate dispersal. Add 4.0 to 6.0 mL of complete growth medium and aspirate cells by gently pipetting. Add appropriate aliquots of the cell suspension to new culture vessels.

Product Description

The cells are positive for keratin by immunoperoxidase staining. KB cells have been reported to contain human papillomavirus 18(HPV-18) sequences. NOTE: Cells of this line contain HeLa marker chromosomes, and were derived via HeLa contamination





All products are for RESEARCH USE ONLY. Not for diagnostic & therapeutic purposes!