

K-562 [K562]

Catalog No: tcel130



Available Sizes

Size: 1×10⁶cells/t25culturebottle



Specifications

Application:

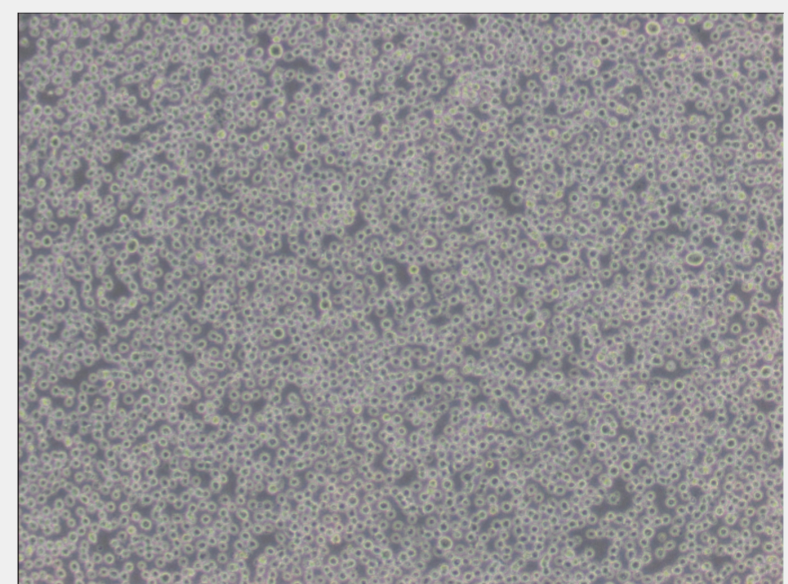
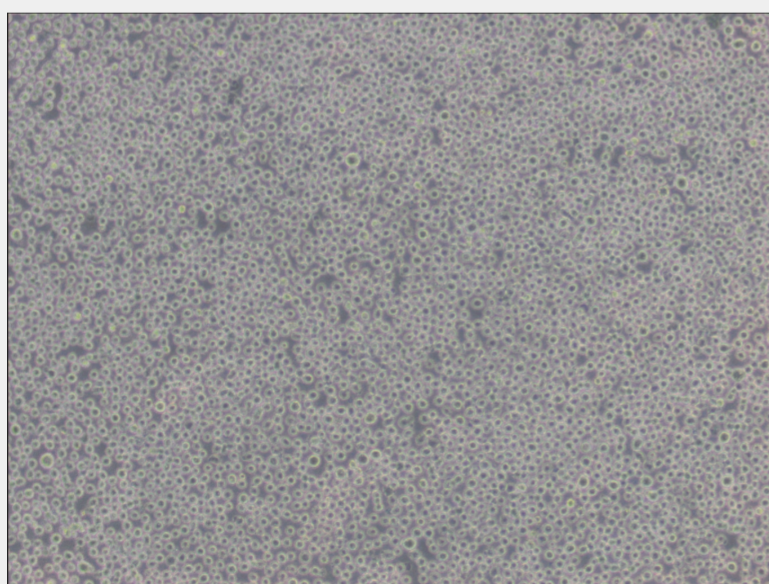
transfection

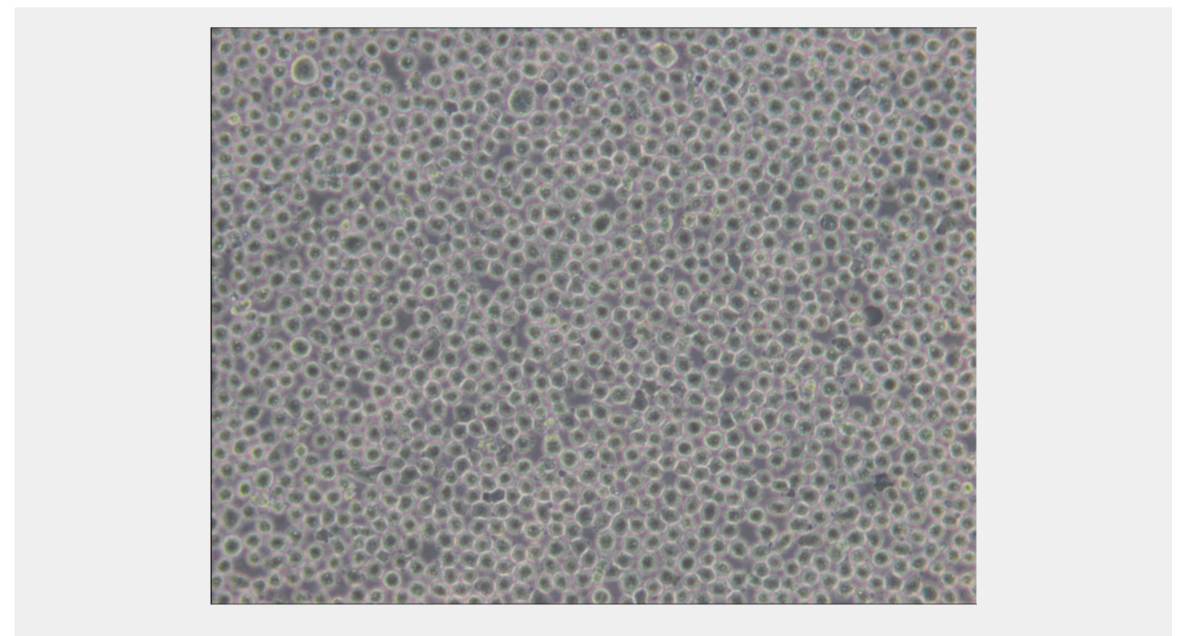
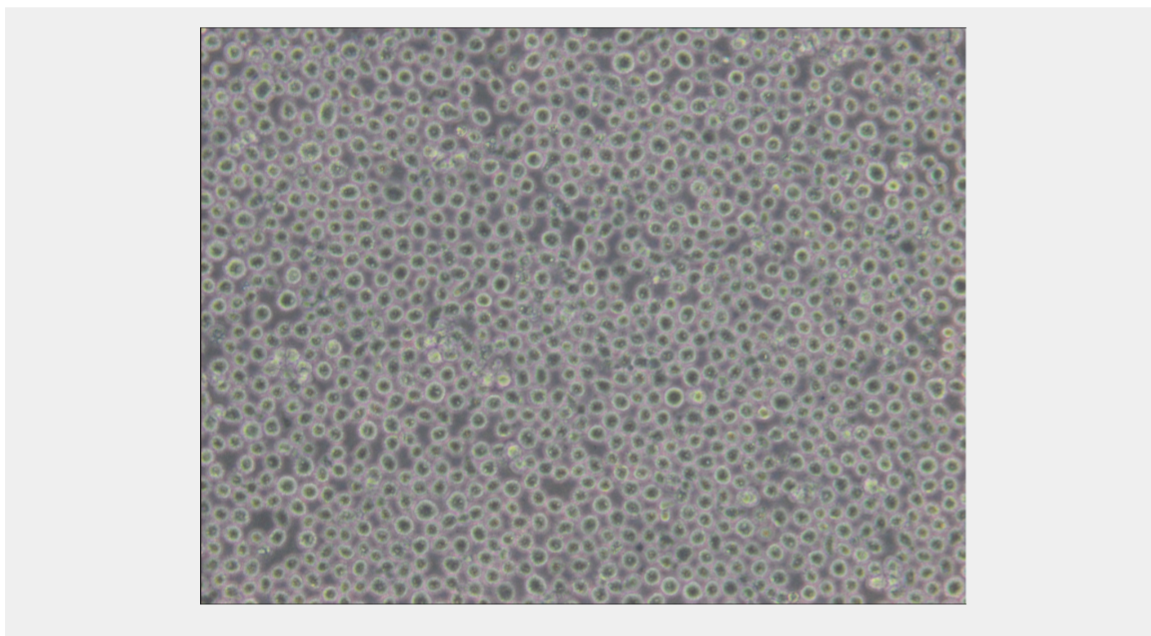
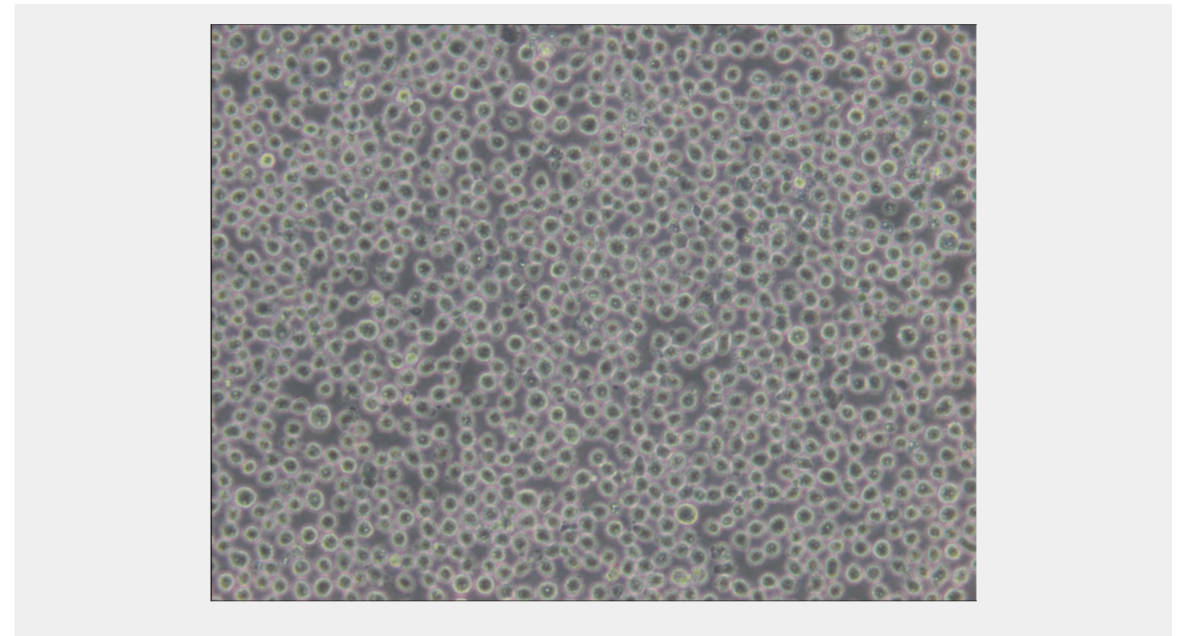
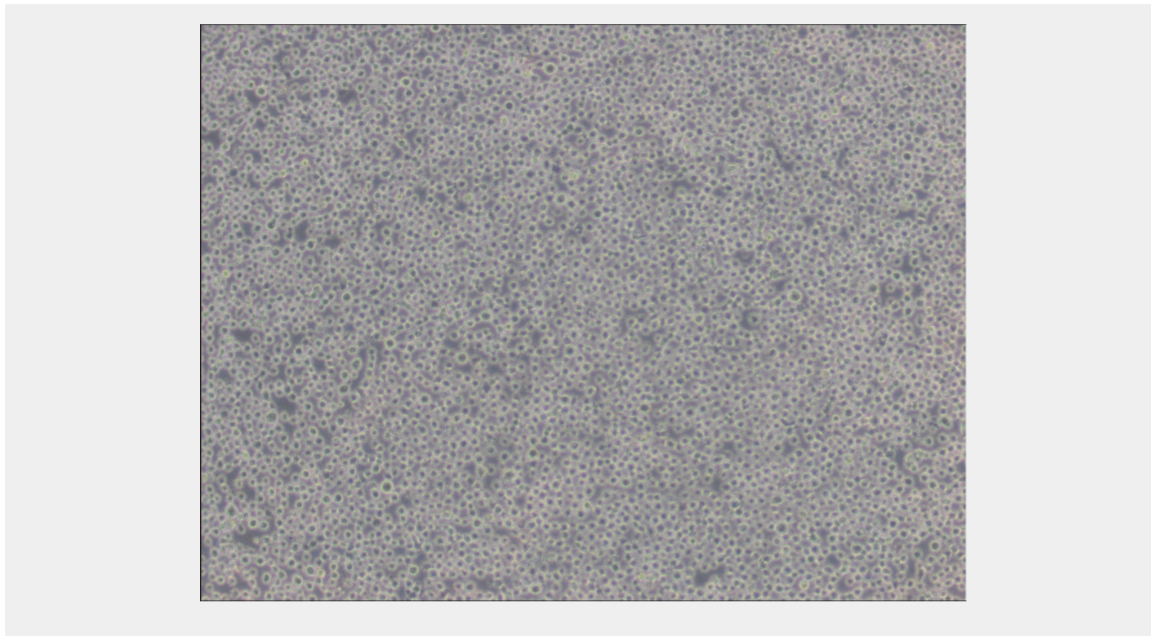
Subculturing:

Cultures can be maintained by the addition of fresh medium or replacement of medium. Alternatively, cultures can be established by centrifugation with subsequent resuspension at the subcultivation ratio of 1:2-1:4.

Product Description

The cell population has been characterized as highly undifferentiated and of the granulocytic series. Studies conducted by Anderson, et al. , on the surface membrane properties led to the conclusion that the K-562 was a human erythroleukemia line. K-562 blasts are multipotential, hematopoietic malignant cells that spontaneously differentiate into recognizable progenitors of the erythrocytic, granulocytic and monocytic series. The effect of inducers on sublines derived from the original K-562 cell line have been reviewed by Koeffler and Golde. Karyological studies on various K-562 sublines have been classified into three groups(A,B,C) by Dimery, et al. The strain obtained by the ATCC most closely resembles the B population. Occurrence of the Philadelphia chromosome, however, was of much lower frequency; none detected in 15 metaphases examined. The line is EBNA negative.





All products are for RESEARCH USE ONLY. Not for diagnostic & therapeutic purposes!