

# Hs 578T

Catalog No: tcel114



## Available Sizes

**Size:** 1×10<sup>6</sup>cells/t25culturebottle



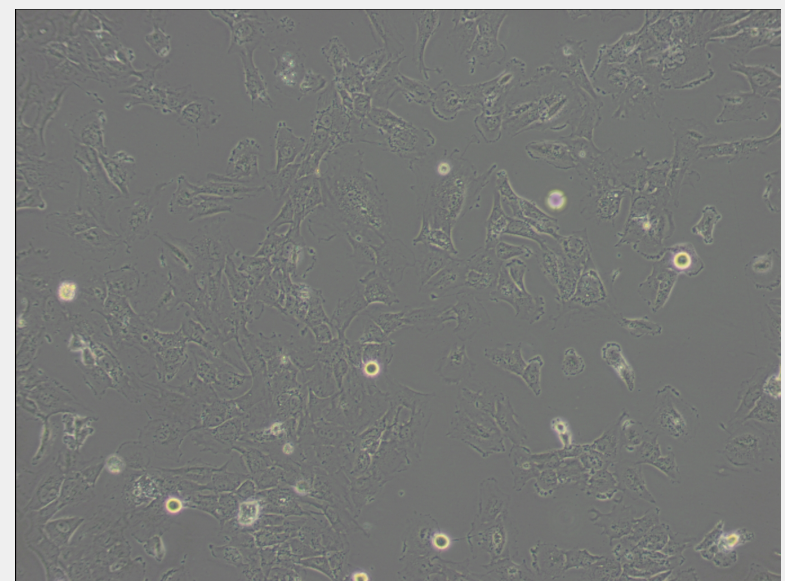
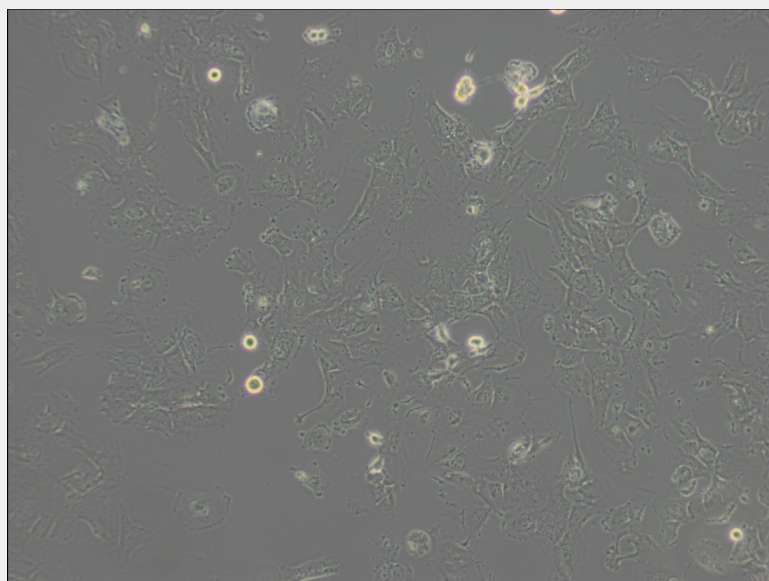
## Specifications

### Subculturing:

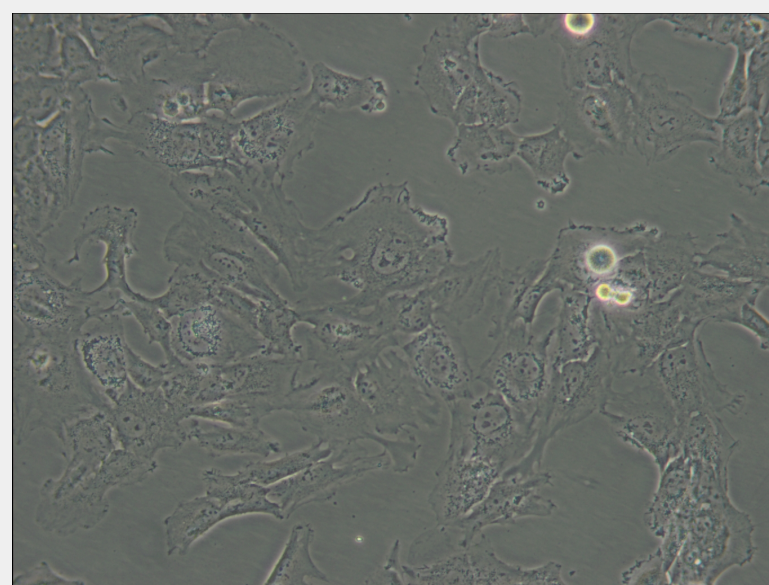
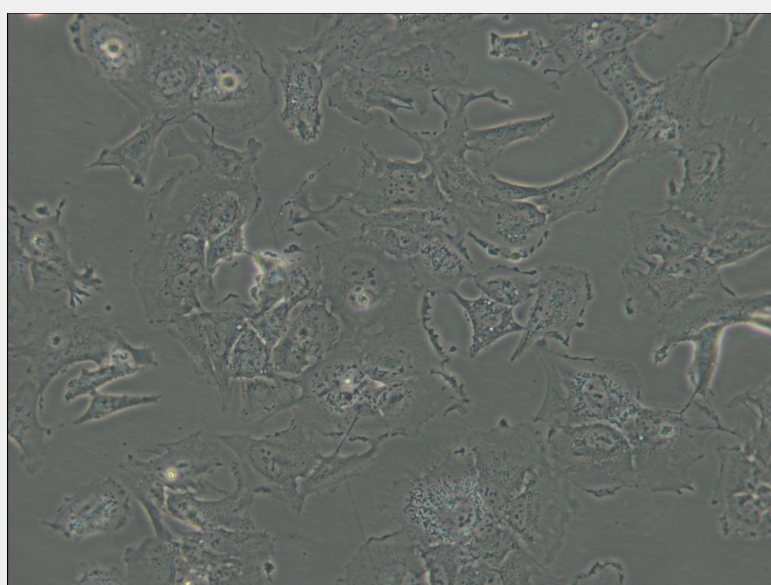
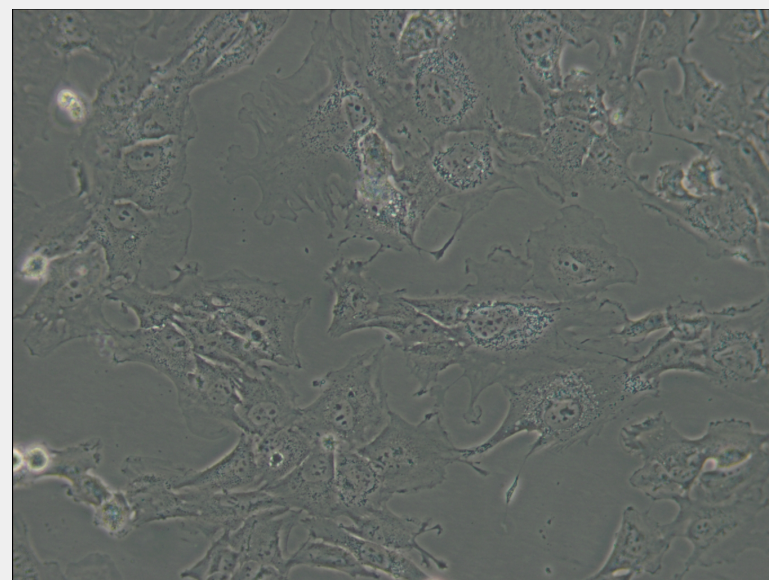
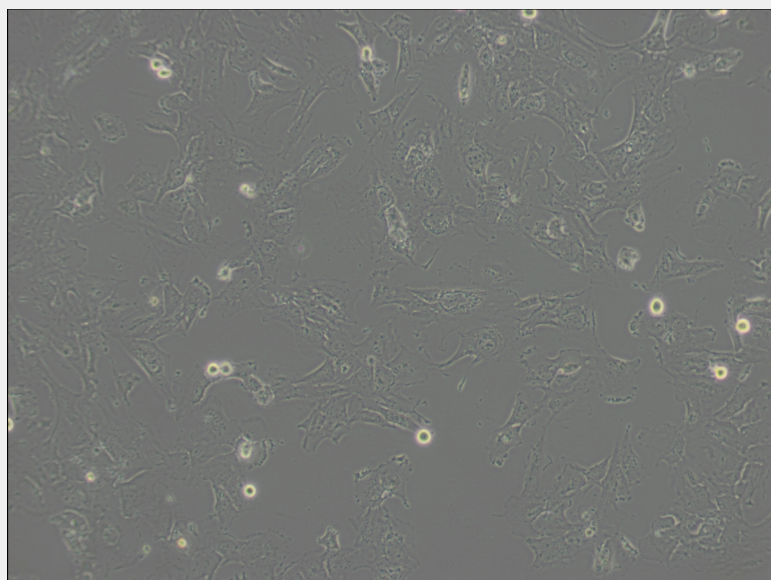
Remove and discard culture medium. Briefly rinse the cell layer with DPBS solution to remove all traces of serum that contains trypsin inhibitor. Add 1.0 to 2.0 mL of Trypsin-EDTA solution to flask and observe cells under an inverted microscope until cell layer is dispersed (usually within 2 to 3 minutes). Cells that are difficult to detach may be placed at 37°C to facilitate dispersal. Add 4.0 to 6.0 mL of complete growth medium and aspirate cells by gently pipetting. Add appropriate aliquots of the cell suspension to new culture vessels.

## Product Description

The Hs 578T line had a mixed polygonal morphology initially, but a stellate cell type was selected for during passage and by cloning. Aggregates of casein protein granules, desmosomes, tight junctions, lipid droplets and vesicularized smooth endoplasmic reticulum were observed by electron microscopy. As with Hs 578Bst, no estrogen receptors or endogenous viruses were detected.







All products are for RESEARCH USE ONLY. Not for diagnostic & therapeutic purposes!