

HEp-2

Catalog No: tcel104



Available Sizes

Size: 1×10⁶cells/t25culturebottle



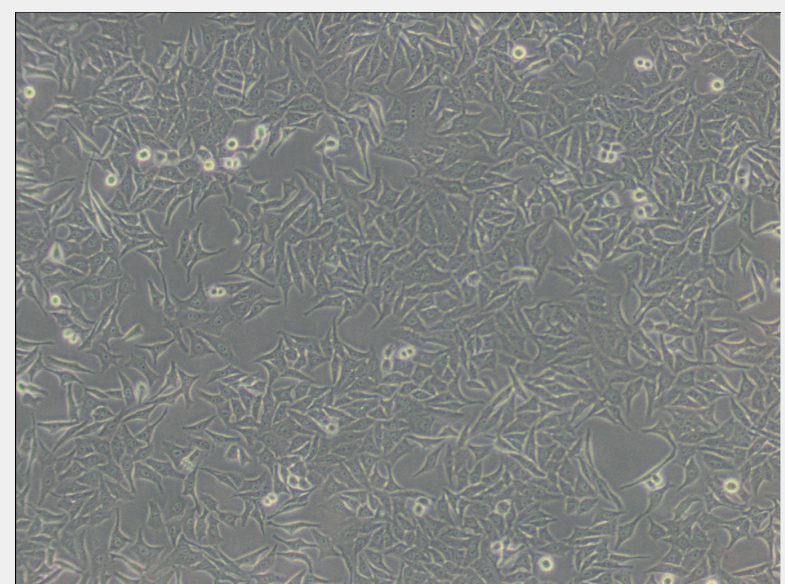
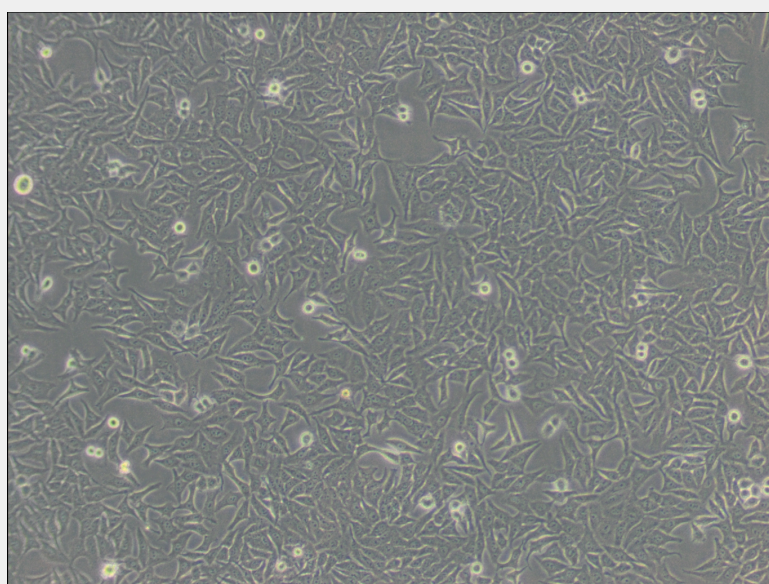
Specifications

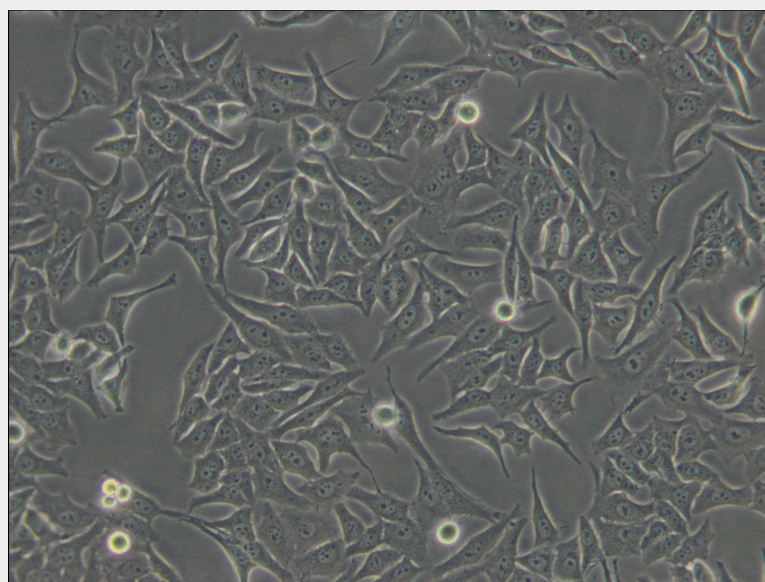
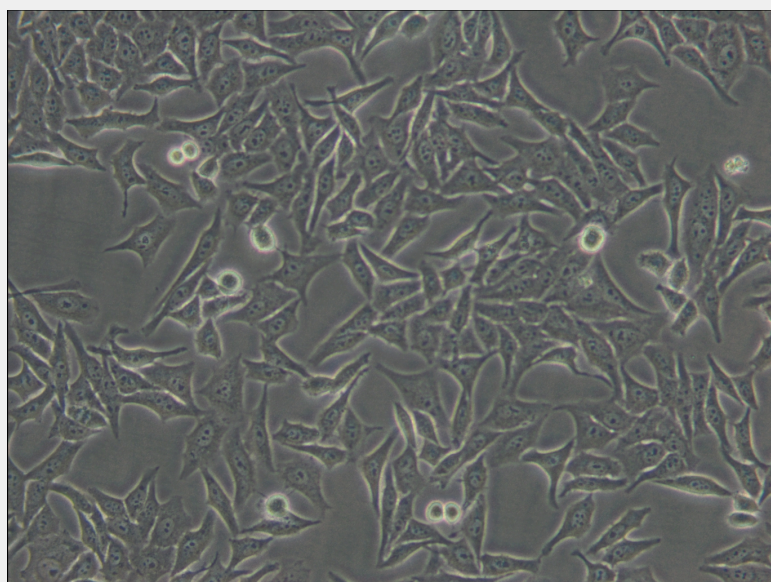
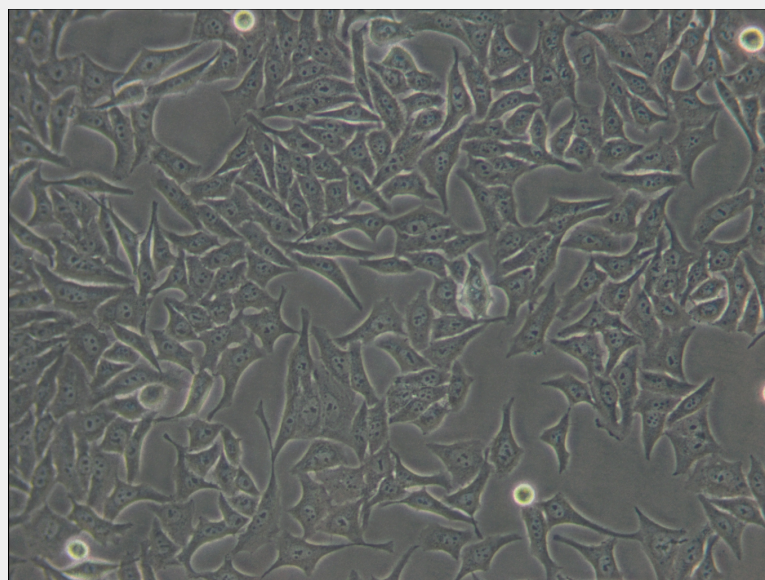
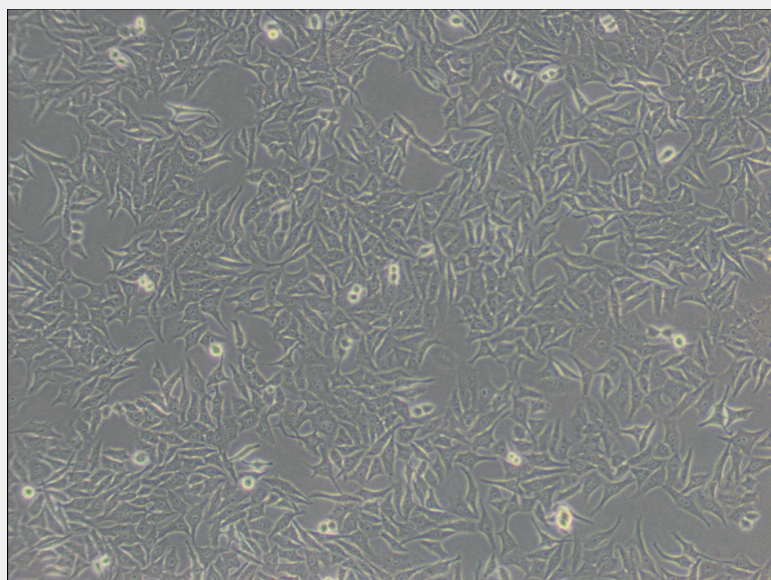
Subculturing:

Remove and discard culture medium. Briefly rinse the cell layer with DPBS solution to remove all traces of serum that contains trypsin inhibitor. Add 1.0 to 2.0 mL of Trypsin-EDTA solution to flask and observe cells under an inverted microscope until cell layer is dispersed (usually within 2 to 3 minutes). Cells that are difficult to detach may be placed at 37°C to facilitate dispersal. Add 4.0 to 6.0 mL of complete growth medium and aspirate cells by gently pipetting. Add appropriate aliquots of the cell suspension to new culture vessels.

Product Description

Cells of this line contain HeLa marker chromosomes, and were derived via HeLa contamination. This line was originally thought to be derived from an epidermoid carcinoma of the larynx, but was subsequently found, based on isoenzyme analysis, HeLa marker chromosomes, and DNA fingerprinting, to have been established via HeLa cell contamination. The cells are positive for keratin by immunoperoxidase staining. ATCC confirmed this cell line is positive for the presence of human papilloma viral DNA sequences via PCR.





All products are for RESEARCH USE ONLY. Not for diagnostic & therapeutic purposes!