

HEC-1-B

Catalog No: tcel100



Available Sizes

Size: 1×10⁶cells/t25culturebottle



Specifications

Application:

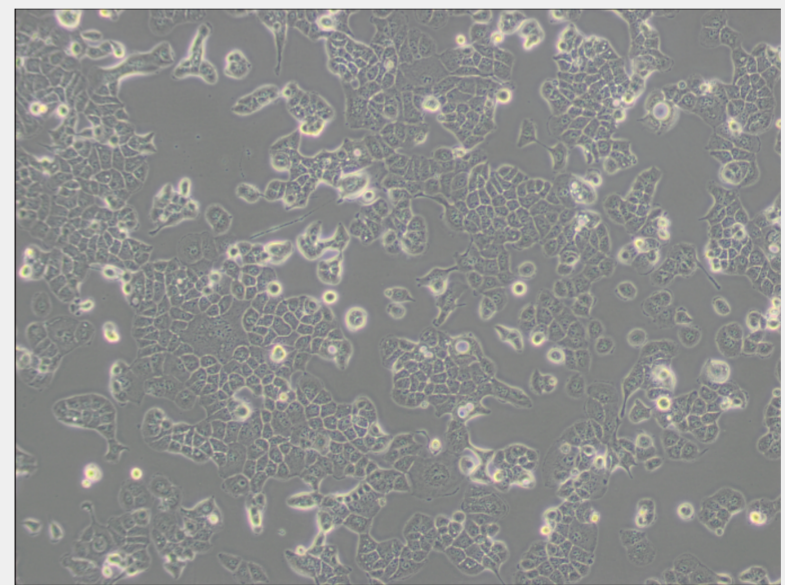
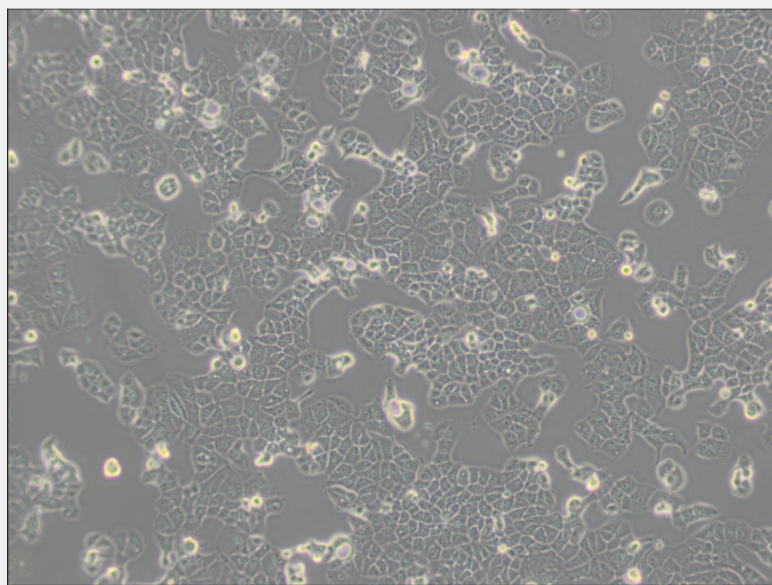
transfection host

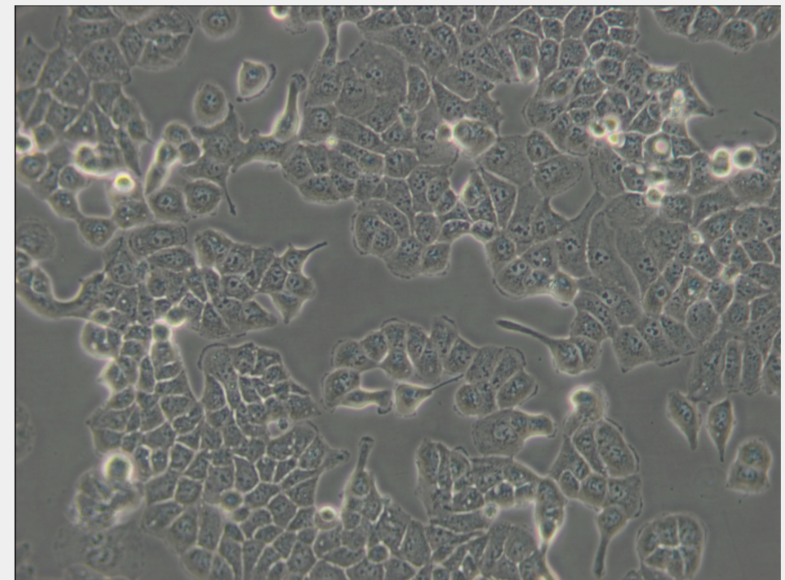
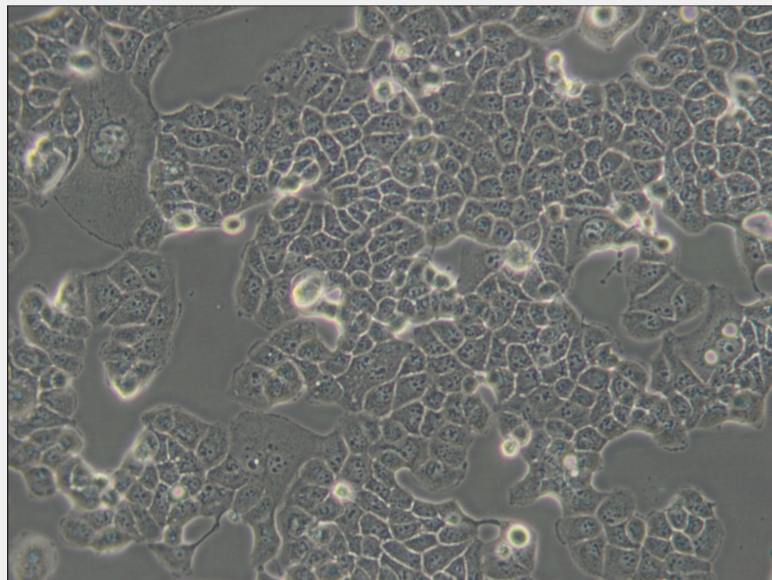
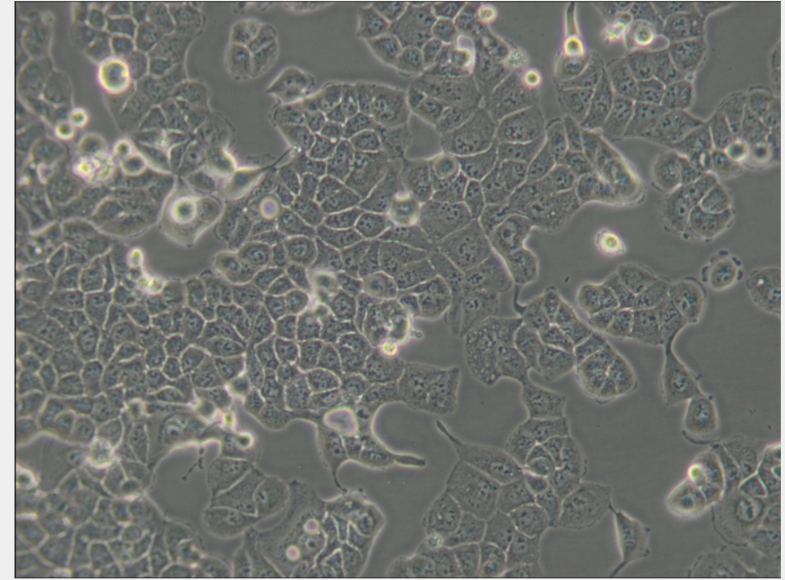
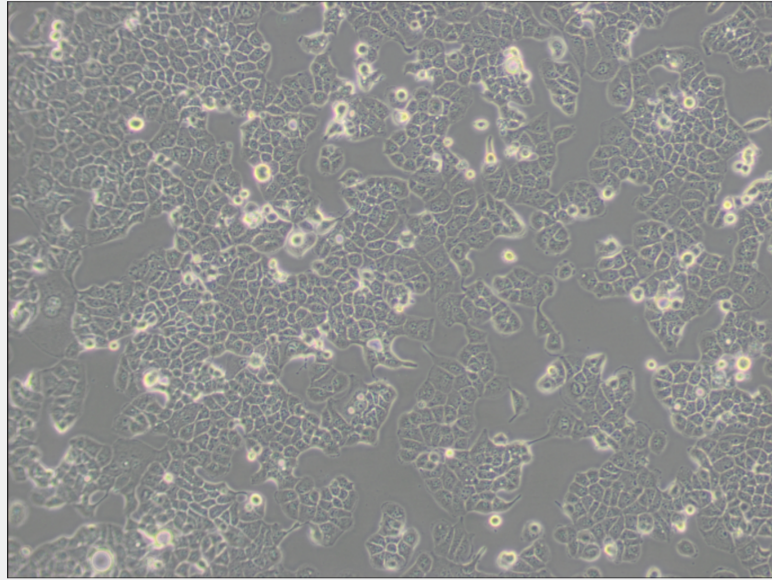
Subculturing:

Remove and discard culture medium. Briefly rinse the cell layer with DPBS solution to remove all traces of serum that contains trypsin inhibitor. Add 1.0 to 2.0 mL of Trypsin-EDTA solution to flask and observe cells under an inverted microscope until cell layer is dispersed (usually within 2 to 3 minutes). Cells that are difficult to detach may be placed at 37°C to facilitate dispersal. Add 4.0 to 6.0 mL of complete growth medium and aspirate cells by gently pipetting. Add appropriate aliquots of the cell suspension to new culture vessels.

Product Description

This is a substrain of HEC-1-A. Unlike HEC-1-A, this substrain exhibited a stationary growth period between the 135th and 190th days in culture and appeared on recovery to be flattened and more pavement patterned than the parent line. The predominant complement of chromosomes was double that observed for the parent line.





All products are for RESEARCH USE ONLY. Not for diagnostic & therapeutic purposes!