

# HCC1937

## Catalog No: tcel93



### Available Sizes

**Size:** 1×10<sup>6</sup>cells/t25culturebottle



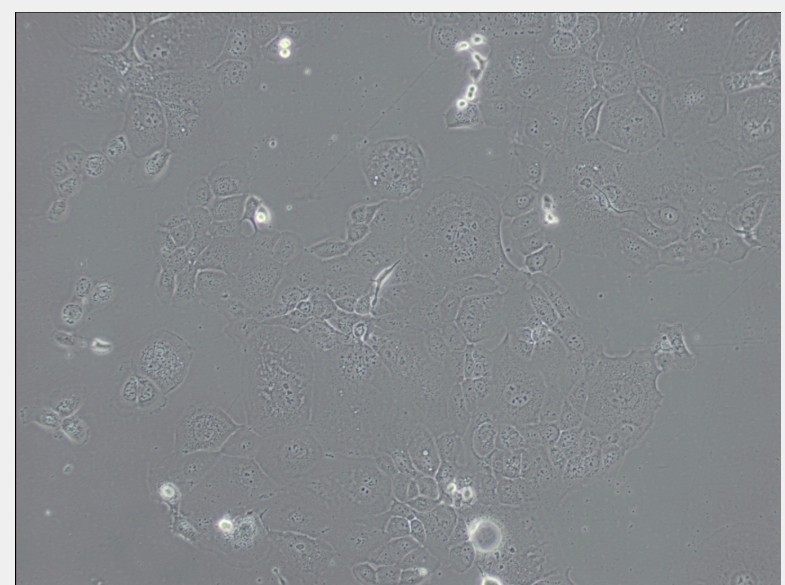
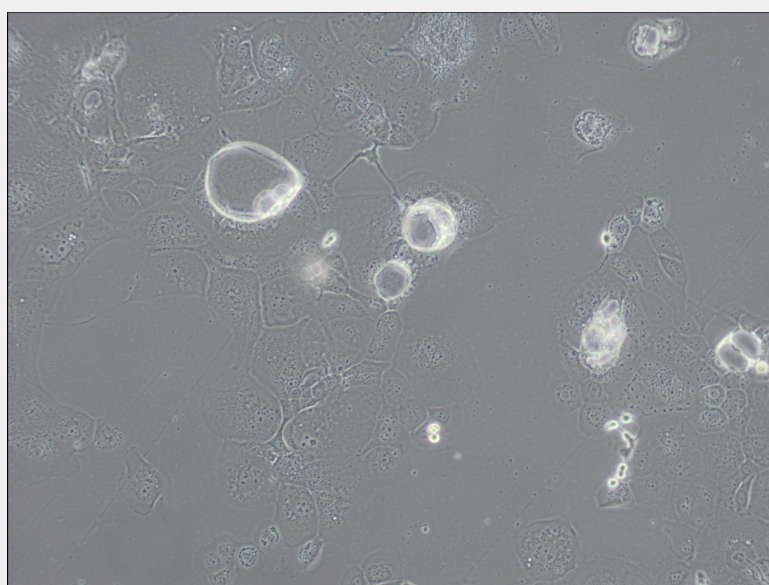
### Specifications

#### Subculturing:

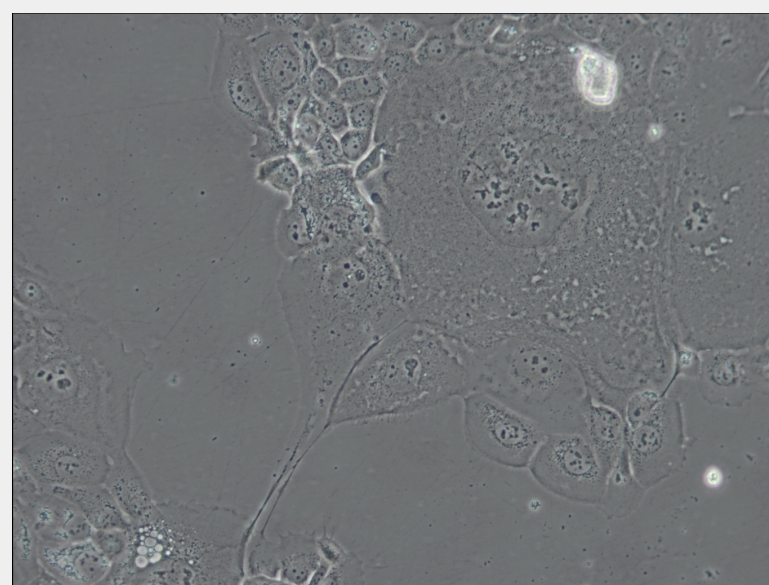
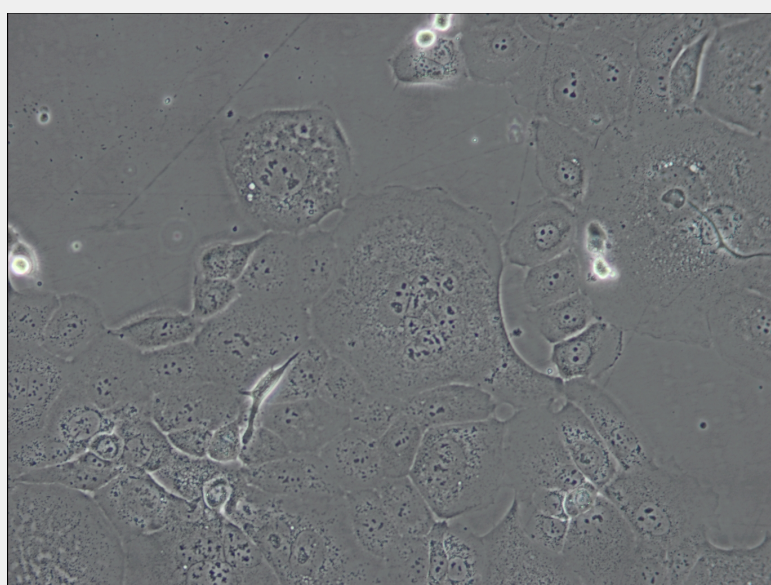
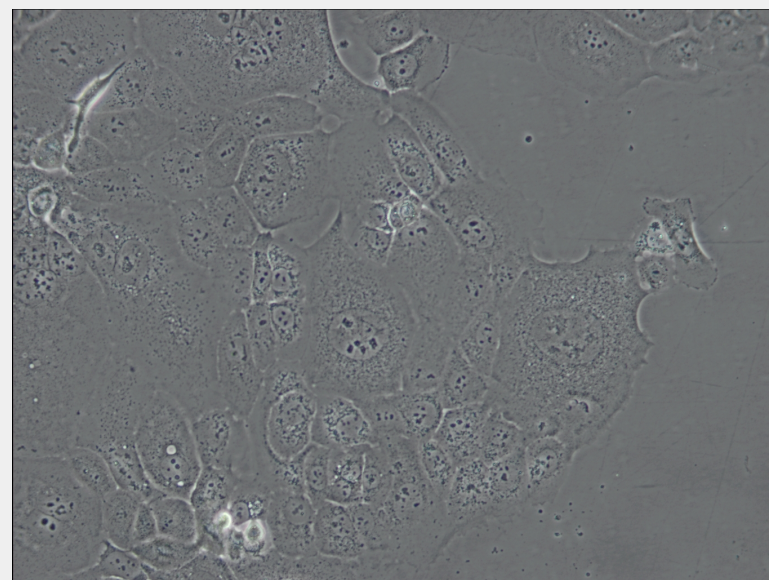
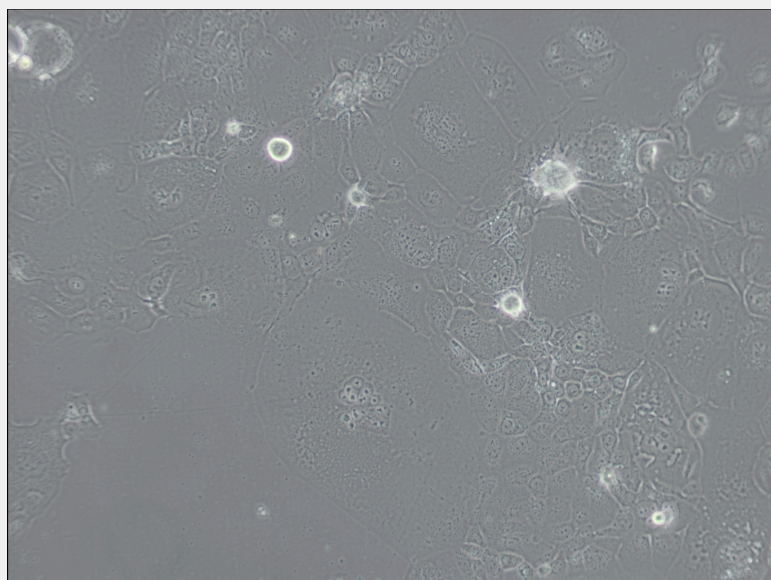
Remove and discard culture medium. Briefly rinse the cell layer with DPBS solution to remove all traces of serum that contains trypsin inhibitor. Add 1.0 to 2.0 mL of Trypsin-EDTA solution to flask and observe cells under an inverted microscope until cell layer is dispersed (usually within 2 to 3 minutes). Cells that are difficult to detach may be placed at 37°C to facilitate dispersal. Add 4.0 to 6.0 mL of complete growth medium and aspirate cells by gently pipetting. Add appropriate aliquots of the cell suspension to new culture vessels.

### Product Description

The tumor was classified as TNM Stage IIB, grade 3BRCA1 analysis revealed that the cell line is homozygous for the BRCA1 5382C mutation, whereas the lymphoblastoid cell line derived from the same patient is heterozygous for the same mutationThis mutation was present in two other family members; an identical sister also developed breast cancerThe cell line has an acquired mutation of TP53 with wild-type allele loss; an acquired homozygous deletion of the PTEN gene, and loss of heterozygosity at multiple loci known to be involved in the pathogenesis of breast cancerThe cells are negative for expression of Her2-neu and for expression of p53. HCC1937 is positive for the epithelial cell specific marker Epithelial Glycoprotein 2(EGP2) and for cytokeratin 19. The cells are negative for expression of estrogen receptor(ER) and progesterone receptor(PR).







All products are for RESEARCH USE ONLY. Not for diagnostic & therapeutic purposes!