

HBL-100

Catalog No: tcel91



Available Sizes

Size: 1×10⁶cells/t25culturebottle



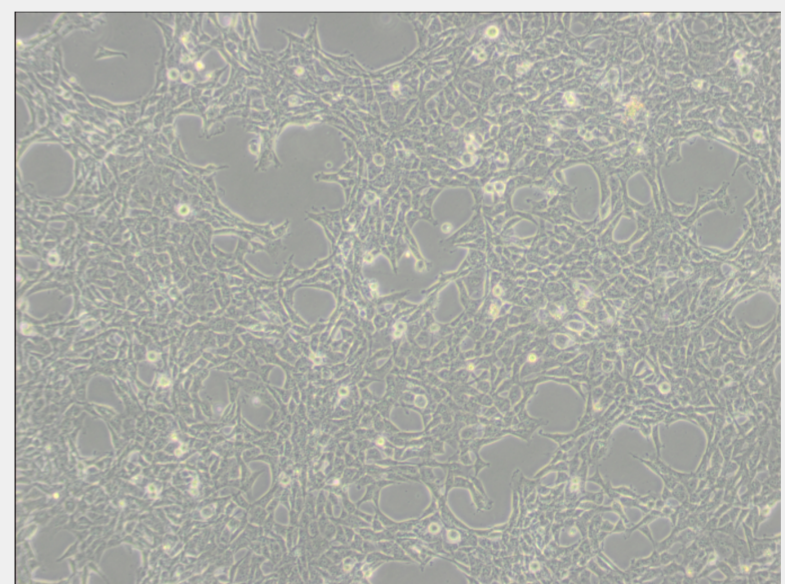
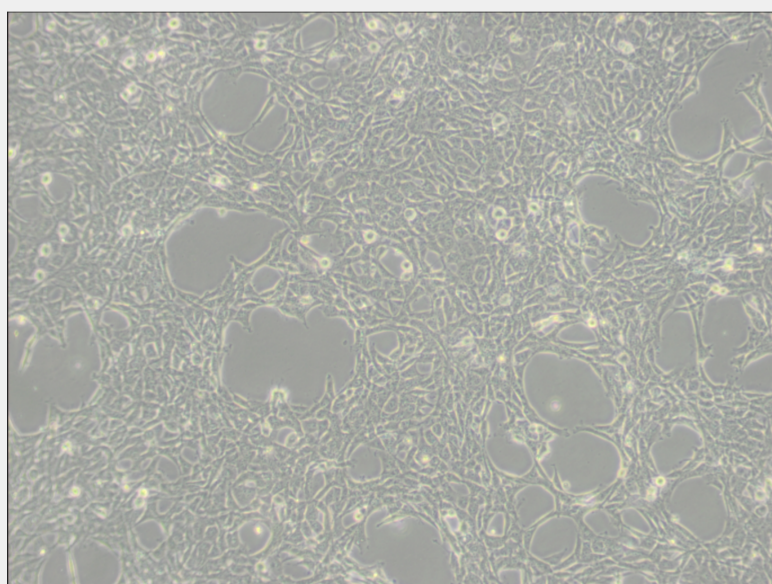
Specifications

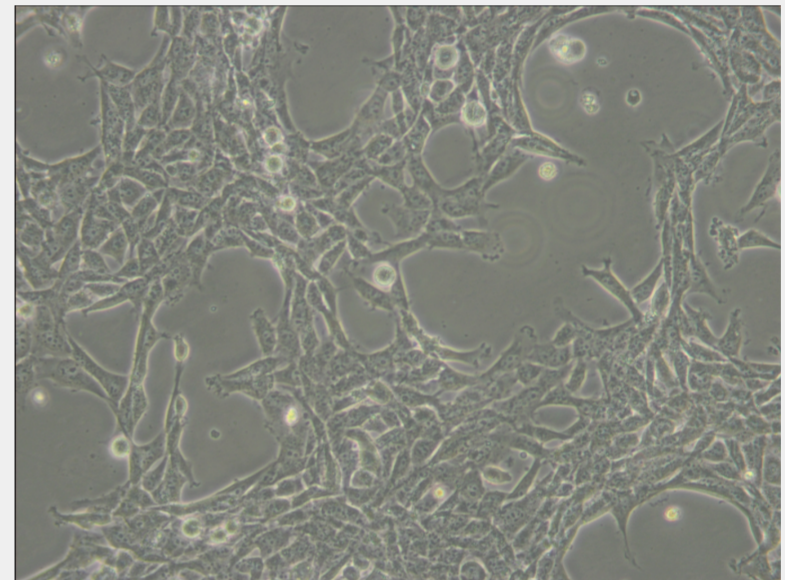
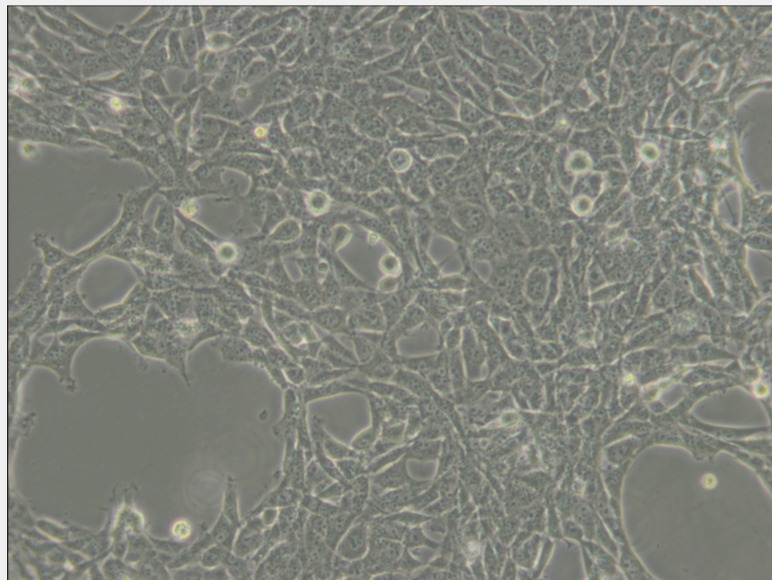
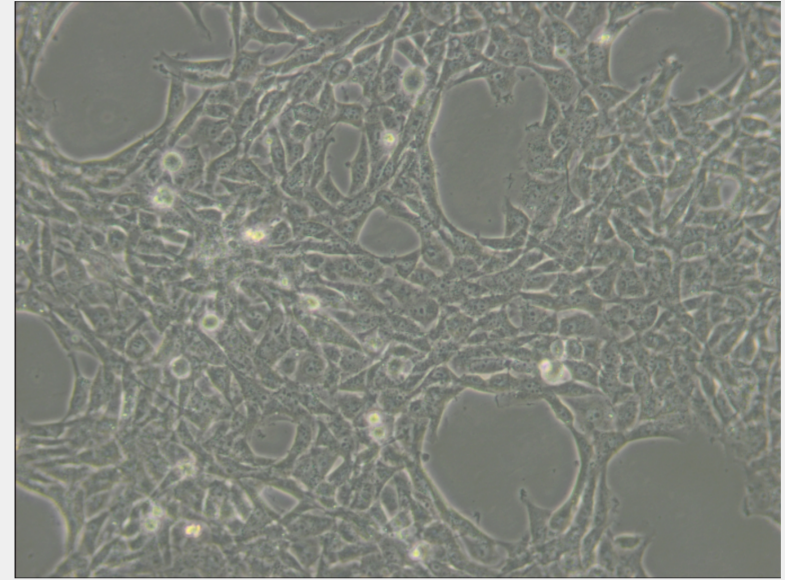
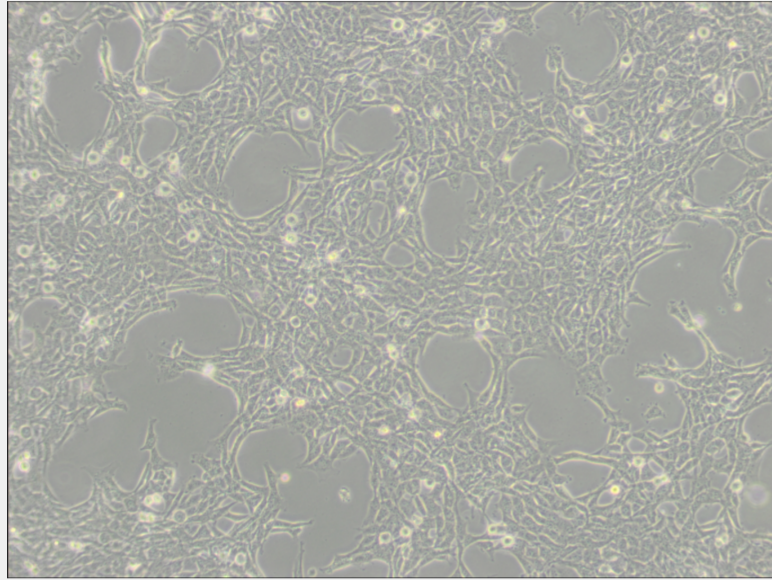
Subculturing:

Remove and discard culture medium. Briefly rinse the cell layer with DPBS solution to remove all traces of serum that contains trypsin inhibitor. Add 1.0 to 2.0 mL of Trypsin-EDTA solution to flask and observe cells under an inverted microscope until cell layer is dispersed (usually within 2 to 3 minutes). Cells that are difficult to detach may be placed at 37°C to facilitate dispersal. Add 4.0 to 6.0 mL of complete growth medium and aspirate cells by gently pipetting. Add appropriate aliquots of the cell suspension to new culture vessels.

Product Description

The epithelial cell line HBL-100 has been derived by E.V. Gaffney and associates from the milk of a nursing mother and obtained 3 days after delivery. Although there was no evidence of a breast lesion in the milk donor, and the patient had no family history of breast cancer, the karyotype of the recovered cells was abnormal as early as passage 7. This line was able to synthesize a small amount of lactose and would respond to prolactin or estrogen by producing increased amounts of casein. Electron micrographs revealed microvilli, tonofibrils and desmosomes.





All products are for RESEARCH USE ONLY. Not for diagnostic & therapeutic purposes!