

H9c2 (2-1)

Catalog No: tcel89



Available Sizes

Size: 1×10⁶cells/t25culturebottle



Specifications

Application:

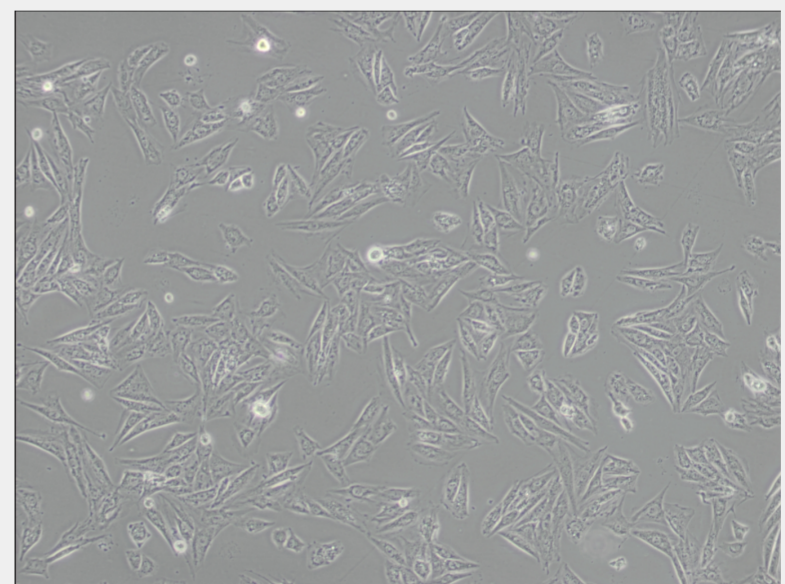
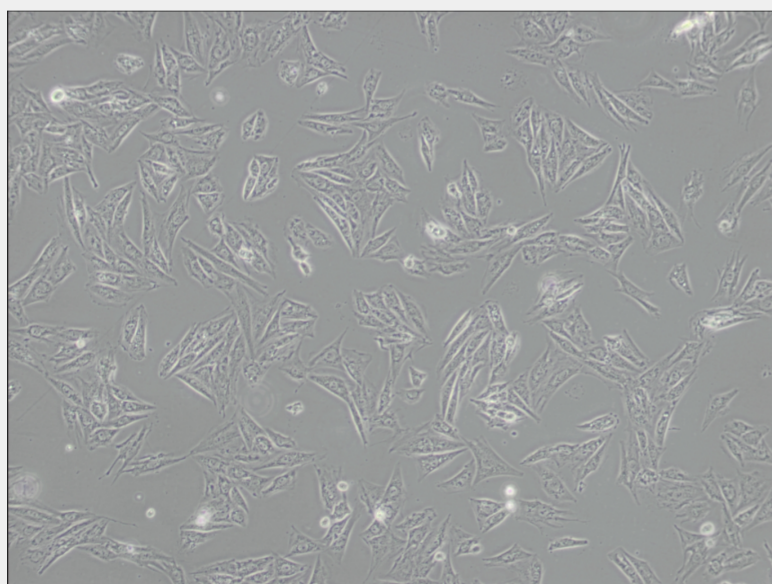
transfection host

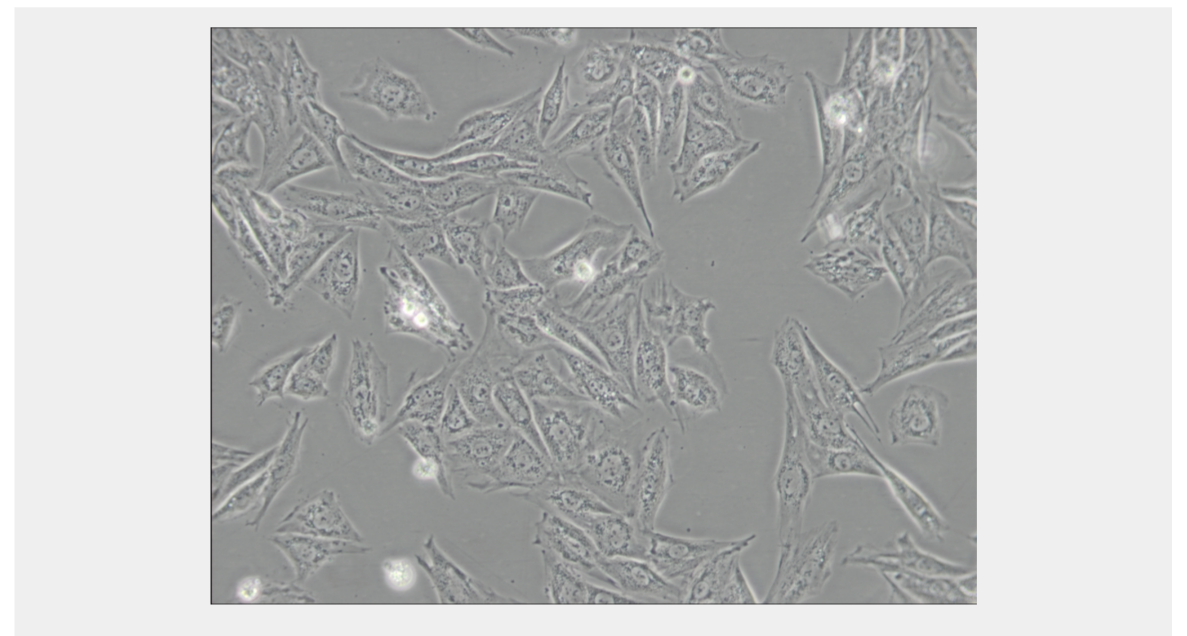
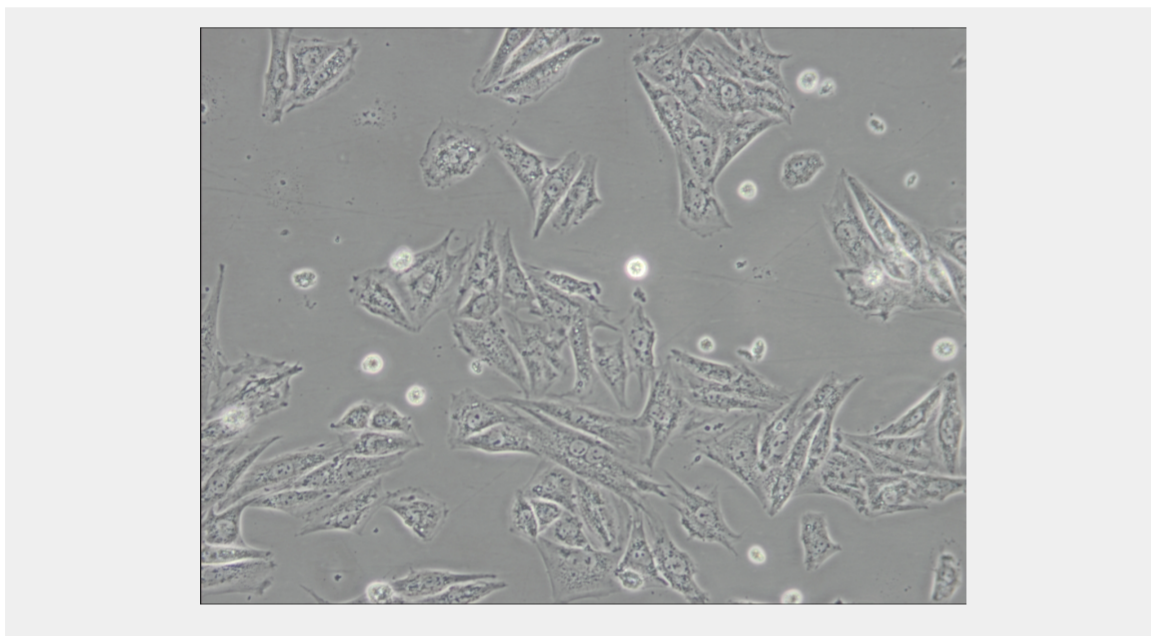
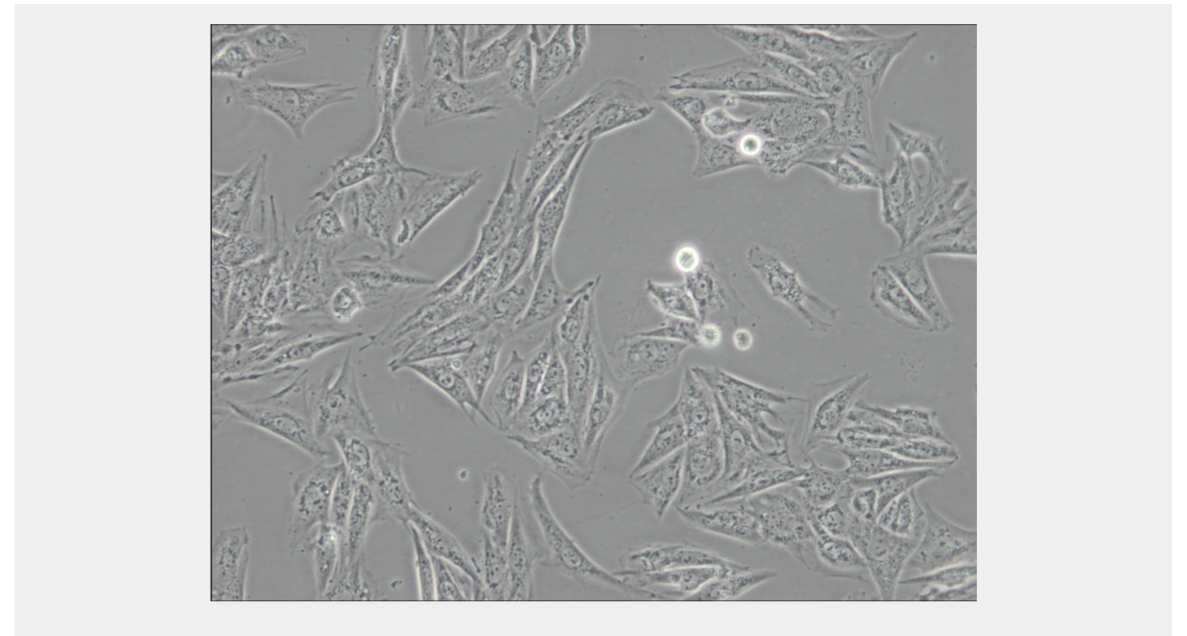
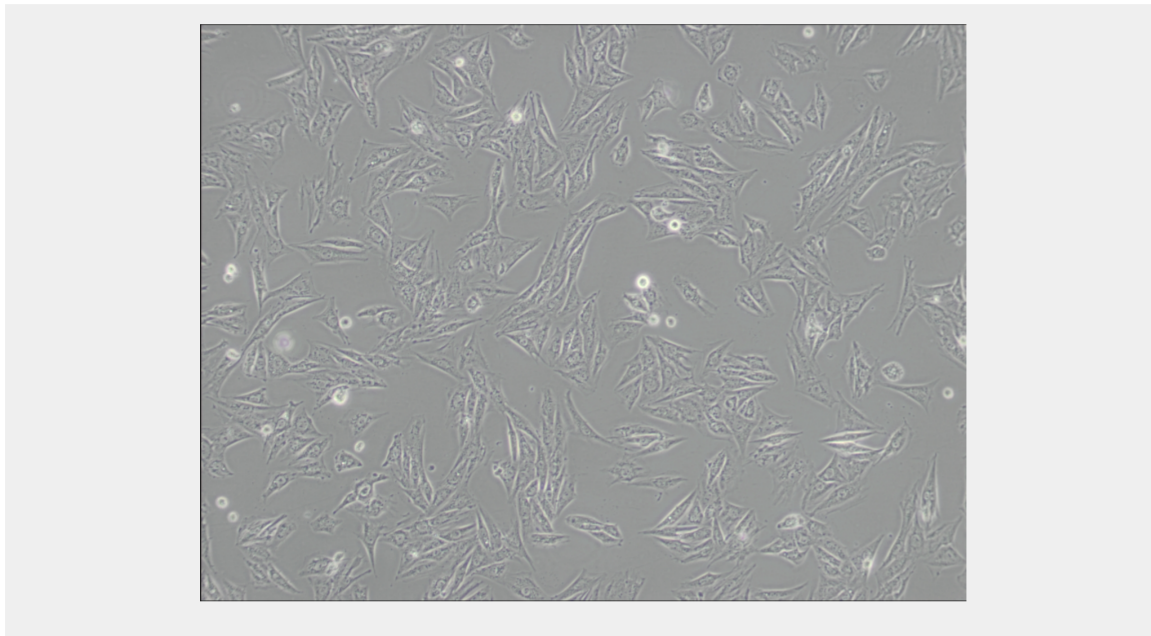
Subculturing:

Remove and discard culture medium. Briefly rinse the cell layer with DPBS solution to remove all traces of serum that contains trypsin inhibitor. Add 1.0 to 2.0 mL of Trypsin-EDTA solution to flask and observe cells under an inverted microscope until cell layer is dispersed (usually within 2 to 3 minutes). Cells that are difficult to detach may be placed at 37°C to facilitate dispersal. Add 4.0 to 6.0 mL of complete growth medium and aspirate cells by gently pipetting. Add appropriate aliquots of the cell suspension to new culture vessels.

Product Description

Myoblastic cells in this line will fuse to form multinucleated myotubes and respond to acetylcholine stimulation. Fusion occurs faster if the serum concentration in the medium is reduced to one percent.





All products are for RESEARCH USE ONLY. Not for diagnostic & therapeutic purposes!