

DU 145

Catalog No: tcel75



Available Sizes

Size: 1×10⁶cells/t25culturebottle



Specifications

Application:

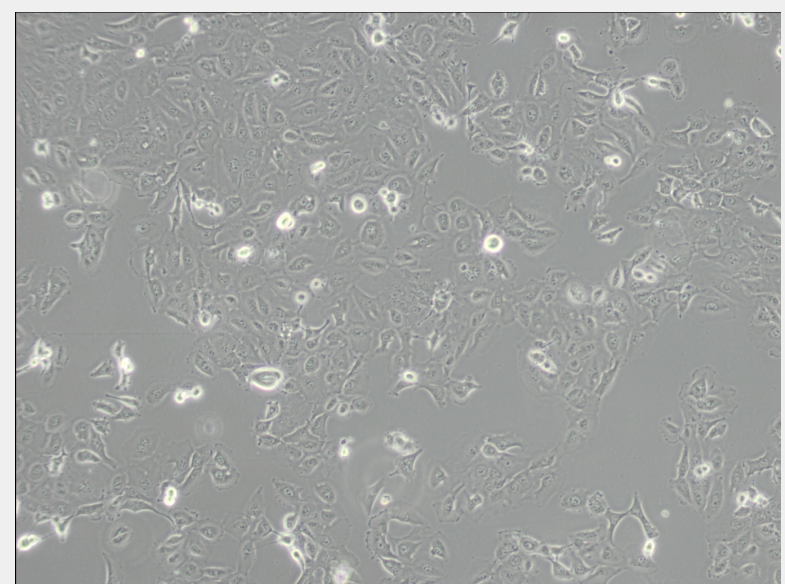
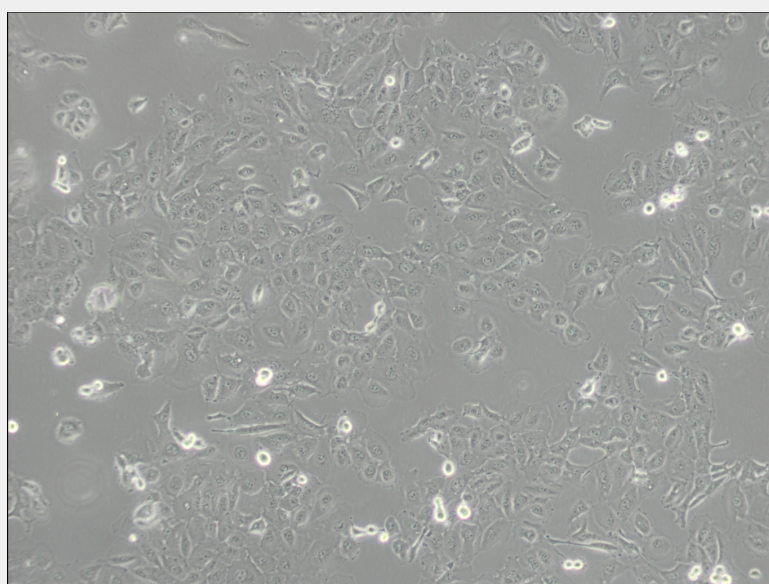
transfection host

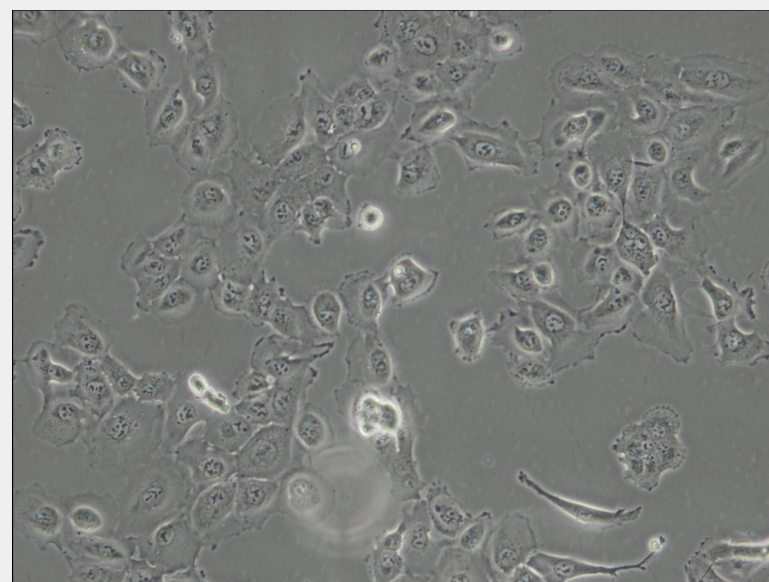
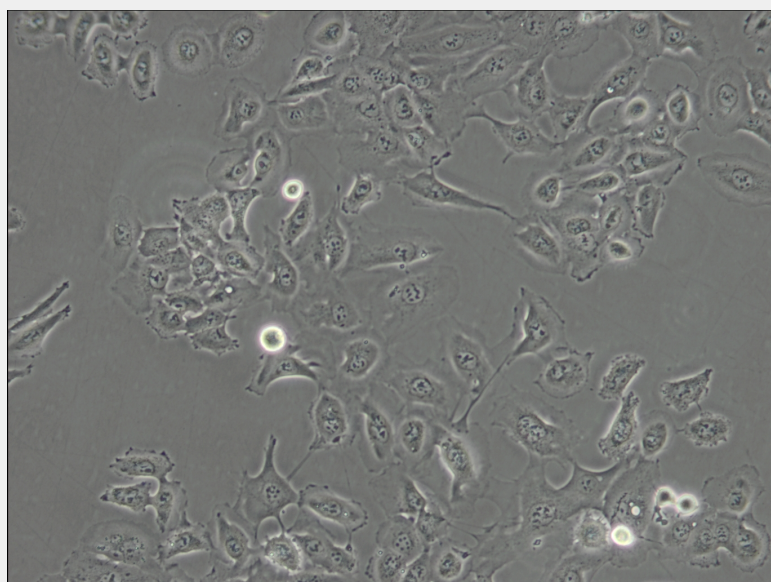
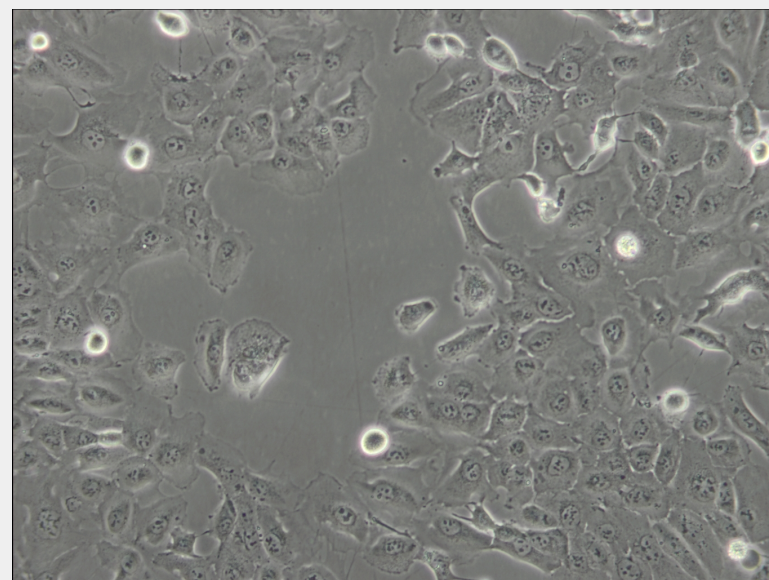
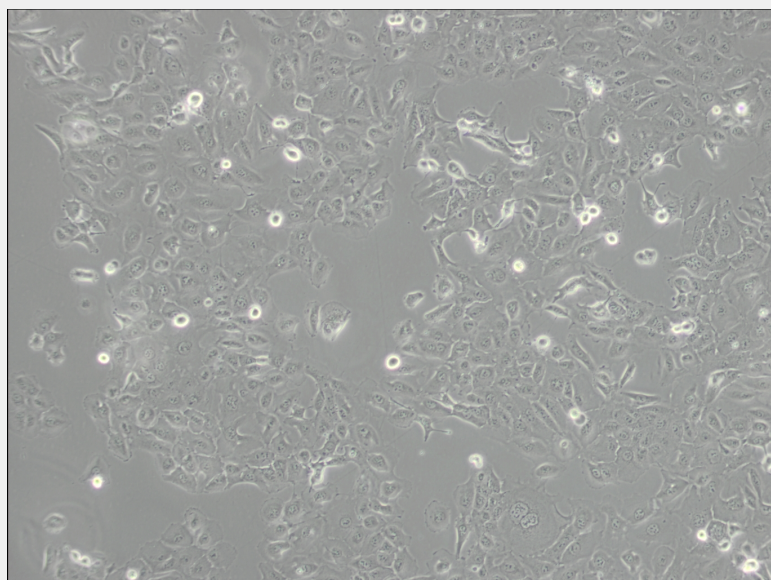
Subculturing:

Remove and discard culture medium. Briefly rinse the cell layer with DPBS solution to remove all traces of serum that contains trypsin inhibitor. Add 1.0 to 2.0 mL of Trypsin-EDTA solution to flask and observe cells under an inverted microscope until cell layer is dispersed (usually within 2 to 3 minutes). Cells that are difficult to detach may be placed at 37°C to facilitate dispersal. Add 4.0 to 6.0 mL of complete growth medium and aspirate cells by gently pipetting. Add appropriate aliquots of the cell suspension to new culture vessels.

Product Description

The line is not detectably hormone sensitive, is only weakly positive for acid phosphatase and isolated cells form colonies in soft agar. The cells do not express prostate antigen. Ultrastructural analyses of both the cell line and original tumor revealed microvilli, tonofilaments, desmosomes, any mitochondria, well developed Golgi and heterogenous lysosomes.





All products are for RESEARCH USE ONLY. Not for diagnostic & therapeutic purposes!