

Daudi

Catalog No: tcel72



Available Sizes

Size: 1×10⁶cells/t25culturebottle



Specifications

Application:

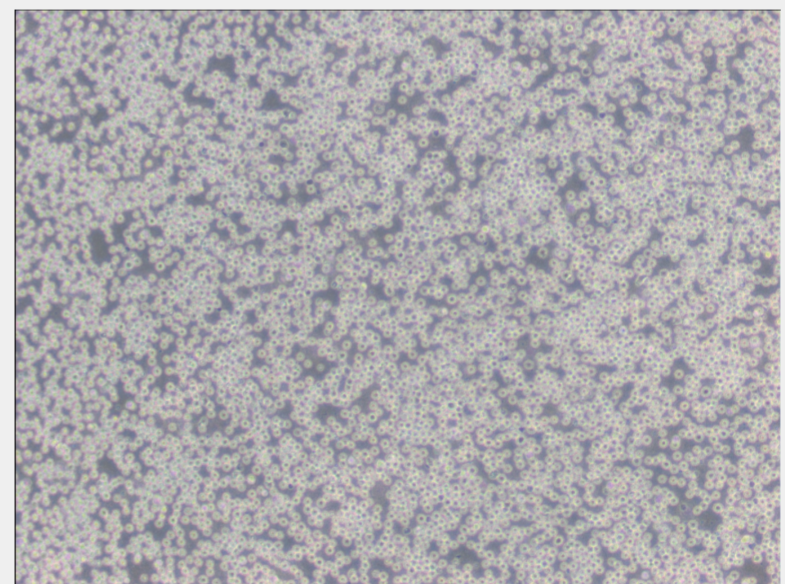
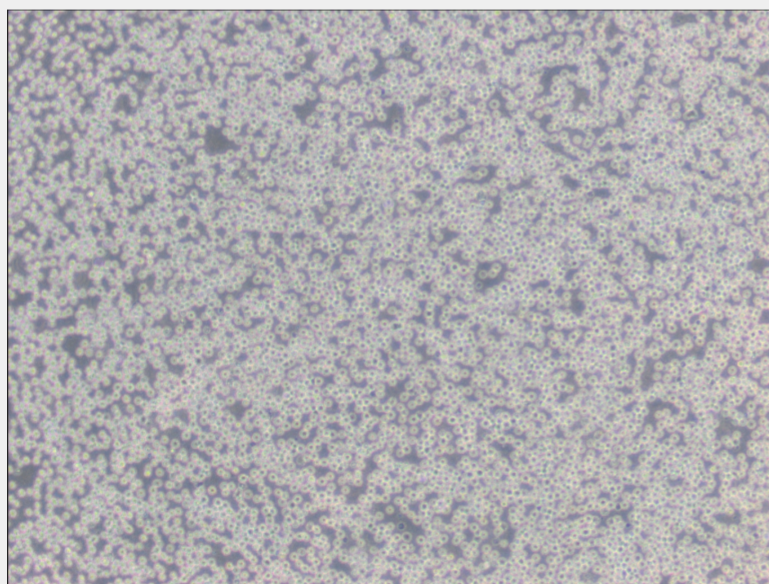
Daudi is a well characterized B lymphoblast cell line which has been employed extensively in studies of mechanisms of leukemogenesis. The cell line is also a suitable transfection host.

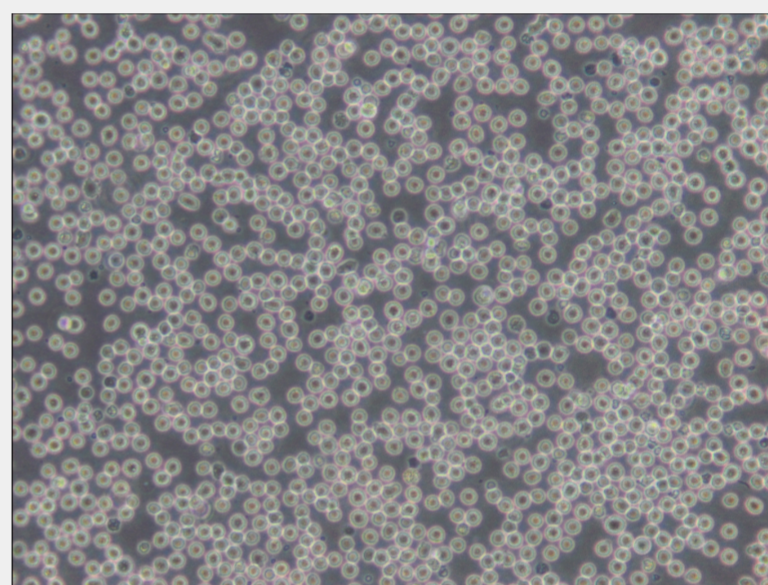
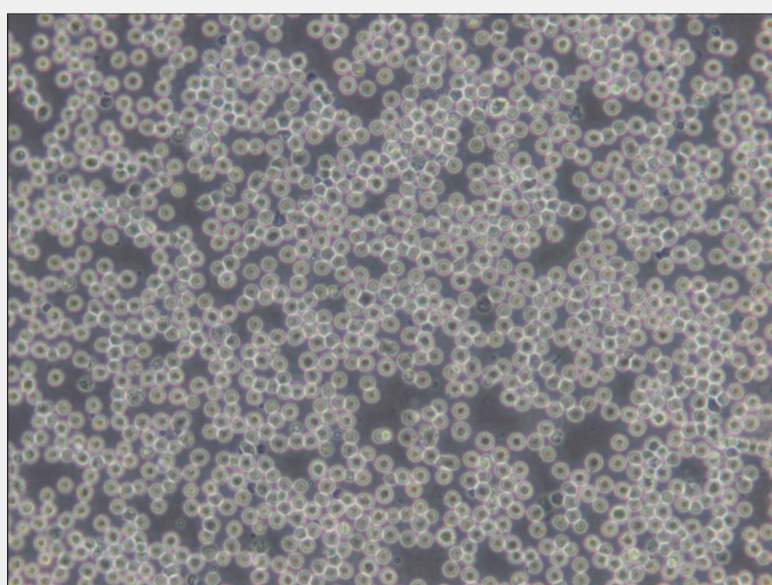
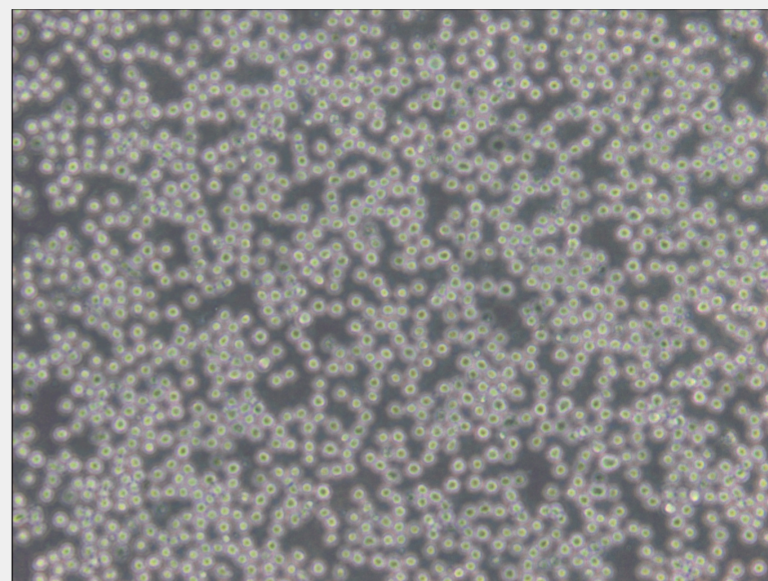
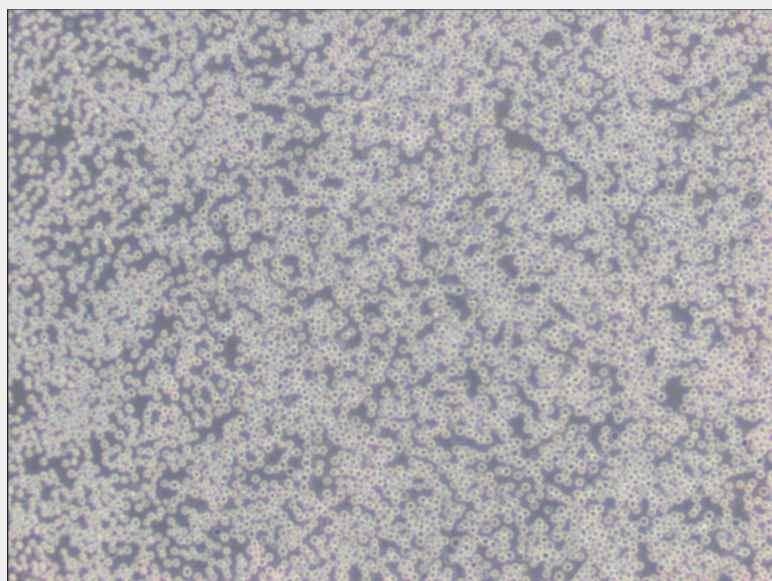
Subculturing:

Cultures can be maintained by the addition of fresh medium or replacement of medium. Alternatively, cultures can be established by centrifugation with subsequent resuspension at the subcultivation ratio of 1:2-1:4.

Product Description

The cells are negative for beta-2-microglobulin. They are positive for EBNA, VCA and Surface immunoglobulin(slg λ).





All products are for RESEARCH USE ONLY. Not for diagnostic & therapeutic purposes!