

COS-1

Catalog No: tcel68



Available Sizes

Size: 1×10⁶cells/t25culturebottle



Specifications

Application:

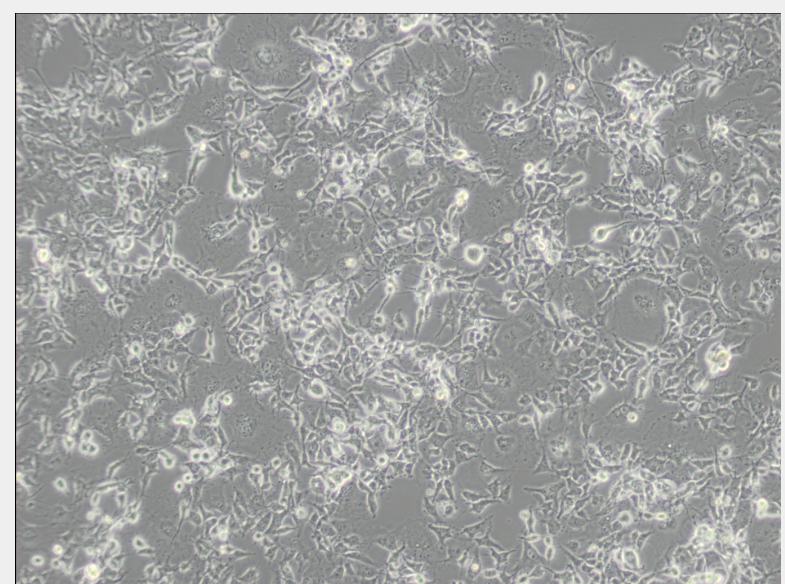
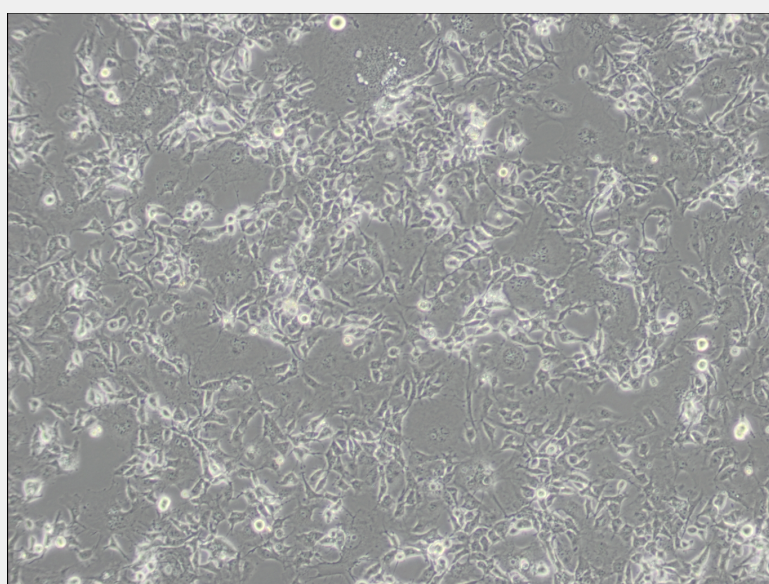
This is an African green monkey kidney fibroblast-like cell line suitable for transfection by vectors requiring expression of SV40 T antigen. This line contains T antigen, retains complete permissiveness for lytic growth of SV40, supports the replication

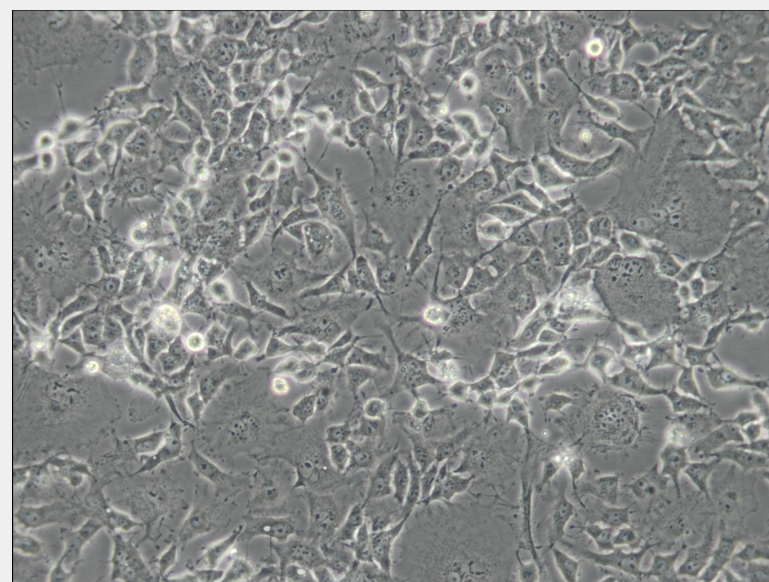
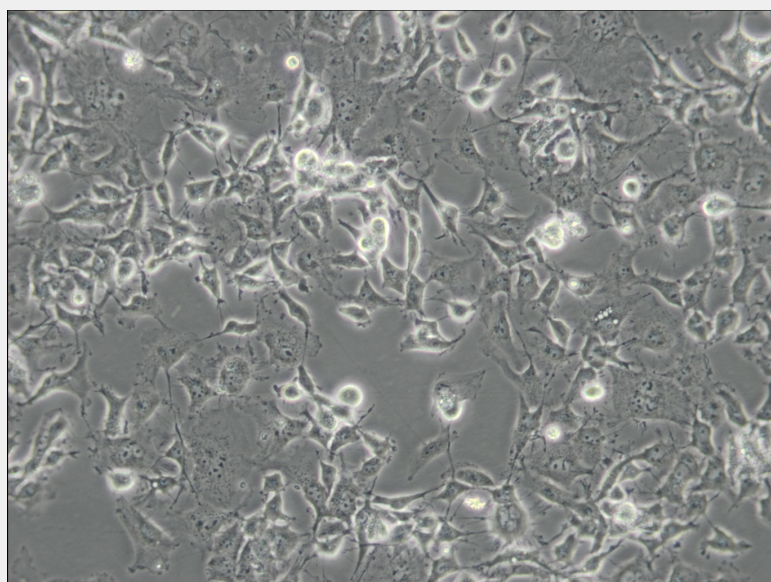
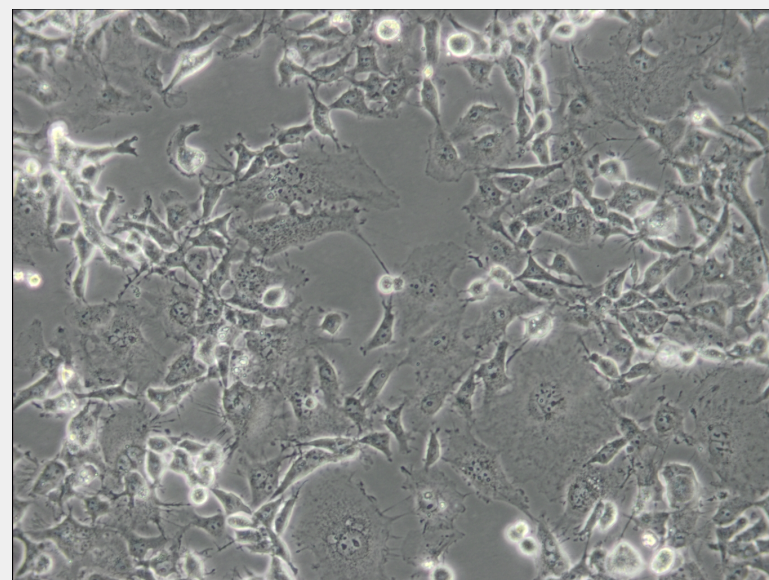
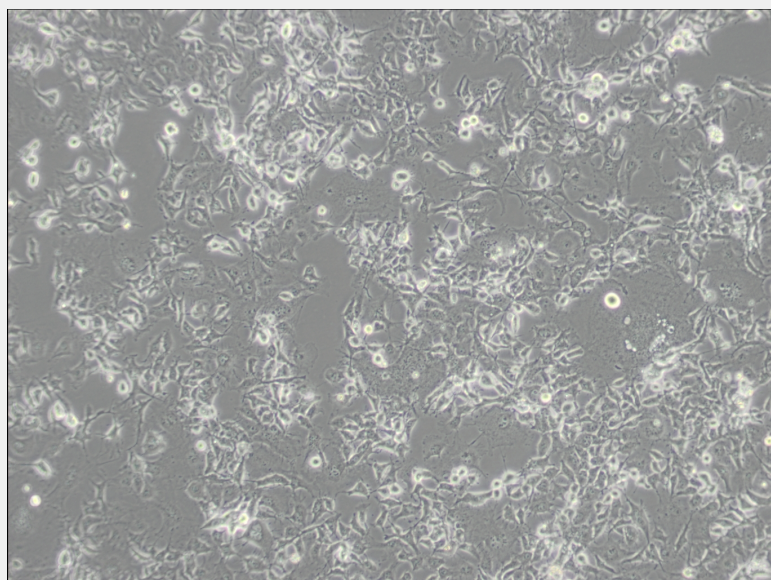
Subculturing:

Remove and discard culture medium. Briefly rinse the cell layer with DPBS solution to remove all traces of serum that contains trypsin inhibitor. Add 1.0 to 2.0 mL of Trypsin-EDTA solution to flask and observe cells under an inverted microscope until cell layer is dispersed (usually within 2 to 3 minutes). Cells that are difficult to detach may be placed at 37°C to facilitate dispersal. Add 4.0 to 6.0 mL of complete growth medium and aspirate cells by gently pipetting. Add appropriate aliquots of the cell suspension to new culture vessels.

Product Description

The cells contain a single integrated copy of the complete early region of the SV40 genome.





All products are for RESEARCH USE ONLY. Not for diagnostic & therapeutic purposes!