

COLO 205

Catalog No: tcel66



Available Sizes

Size: 1×10^6 cells/t25culturebottle



Specifications

Application:

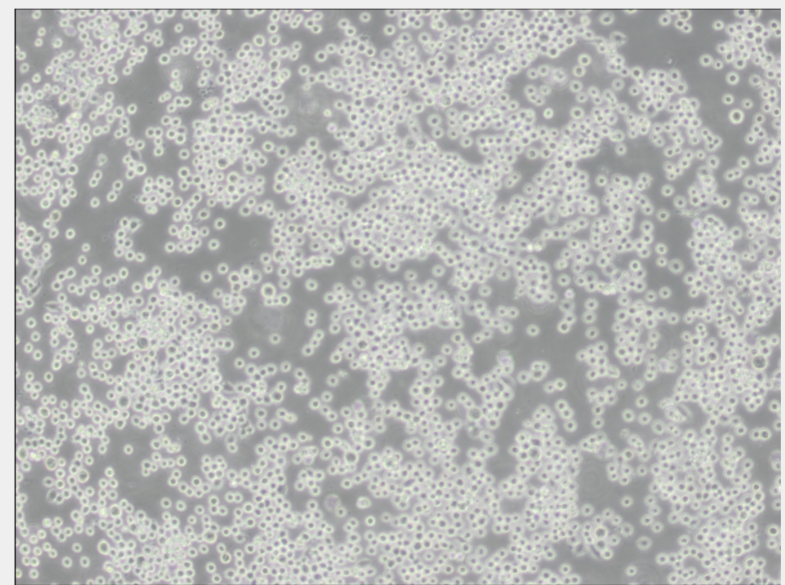
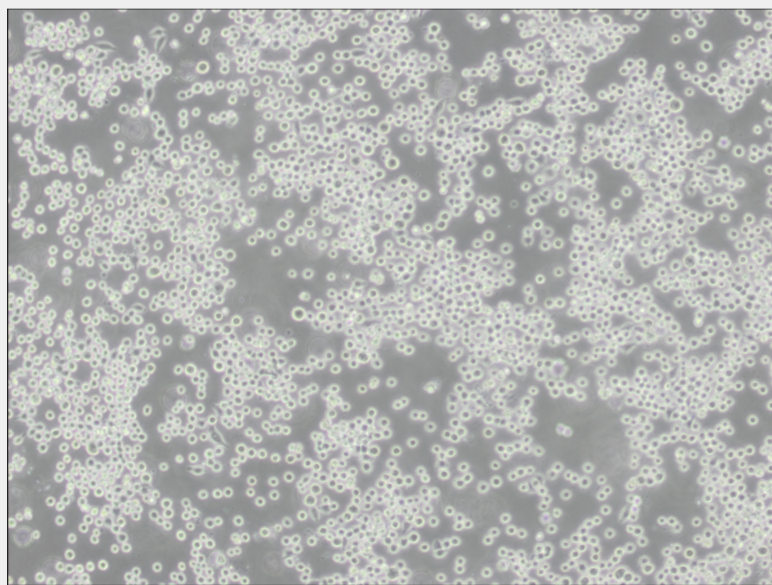
transfection host

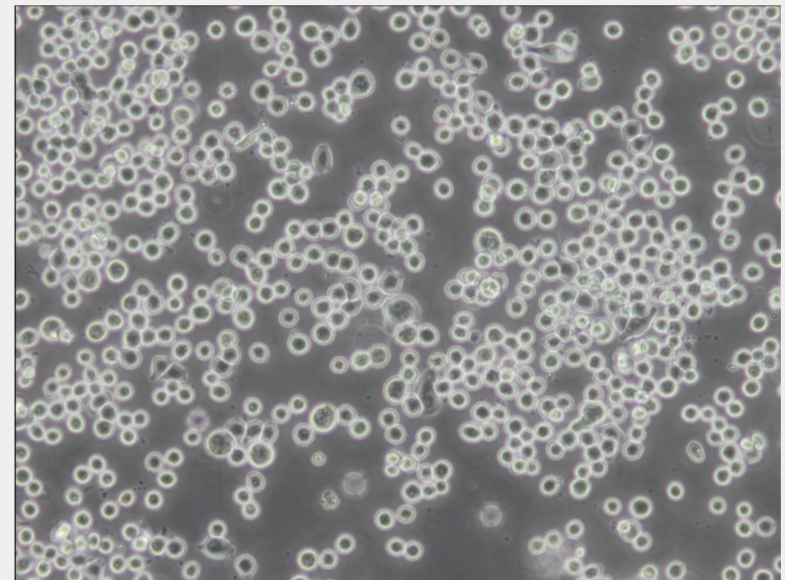
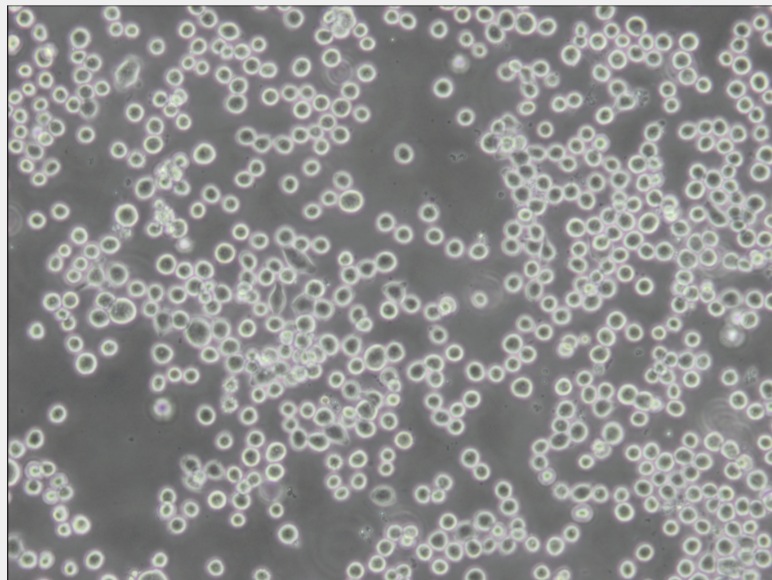
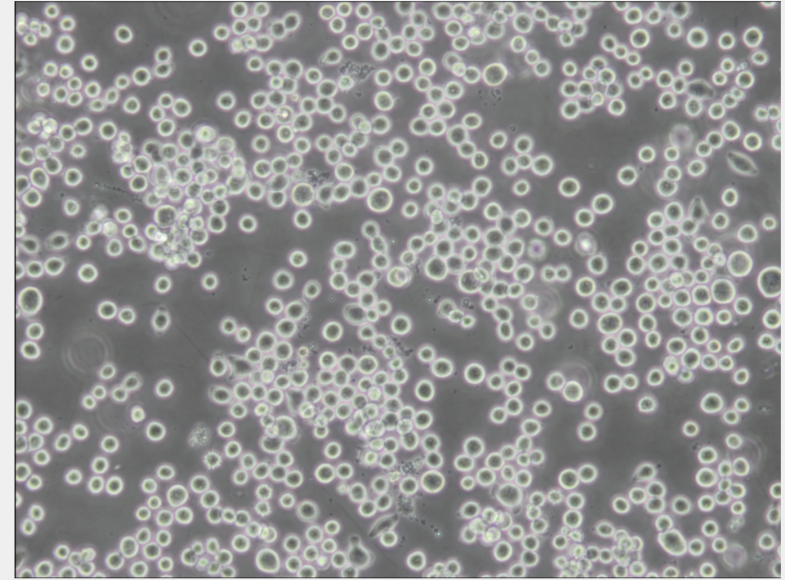
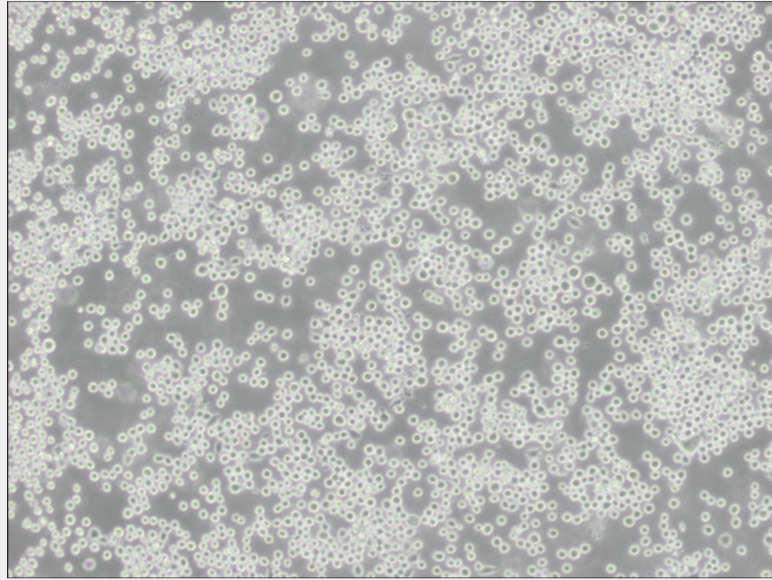
Subculturing:

Remove and discard culture medium. These cells grow as a mixture of floating and adherent cells. Sometimes many cells are floating, they can be harvested by centrifugation of medium instead of discarding it. Add 1.0 to 2.0 mL of 0.25% (w/v) Trypsin-0.53mM EDTA solution to flask and observe cells under an inverted microscope until cell layer is dispersed (usually within 2 to 3 minutes). Add 4.0 to 6.0 mL of complete growth medium and aspirate cells by gently pipetting. Add appropriate aliquots of the cell suspension to new culture vessels. Incubate cultures at 37°C.

Product Description

The line was derived from tissue from the same patient as COLO 201. The cells are CSAp negative(CSAp-). The cells are positive for keratin by immunoperoxidase staining. COLO 205 cells express a 36000 dalton cell surface glycoprotein related to the GA733-2 tumor associated antigen.





All products are for RESEARCH USE ONLY. Not for diagnostic & therapeutic purposes!