

CoC1 / DDP

Catalog No: tcel65



Available Sizes

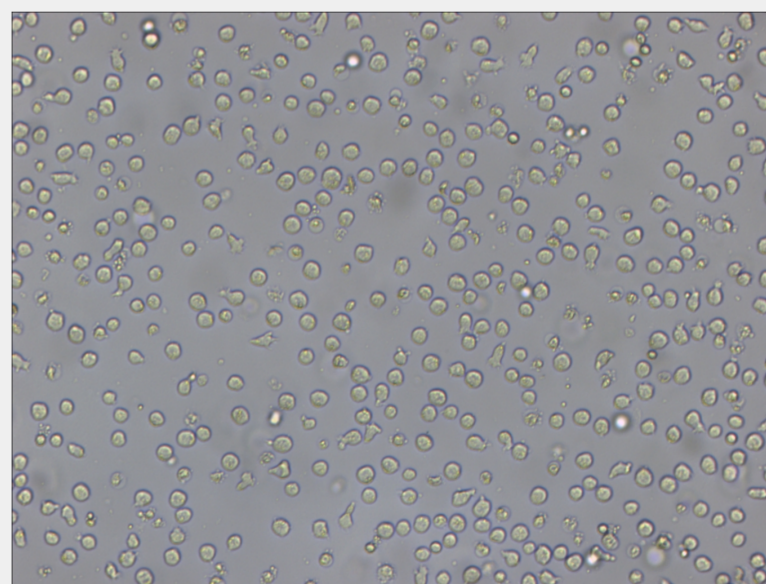
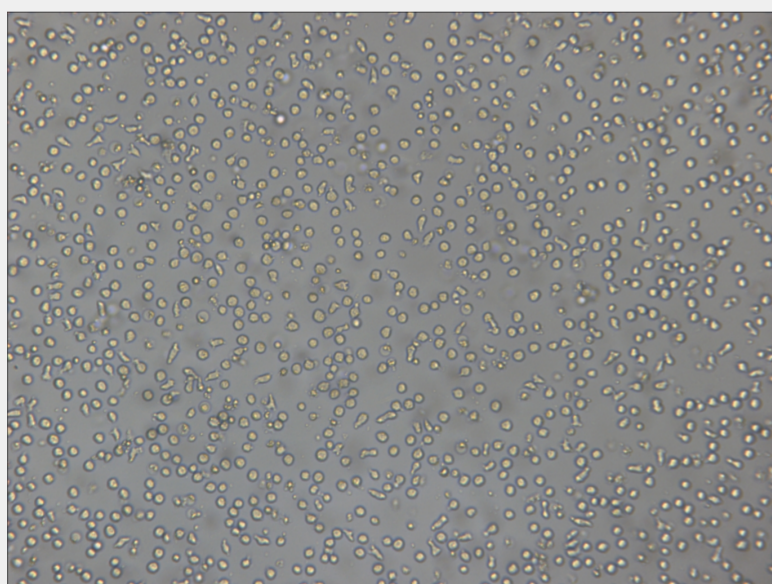
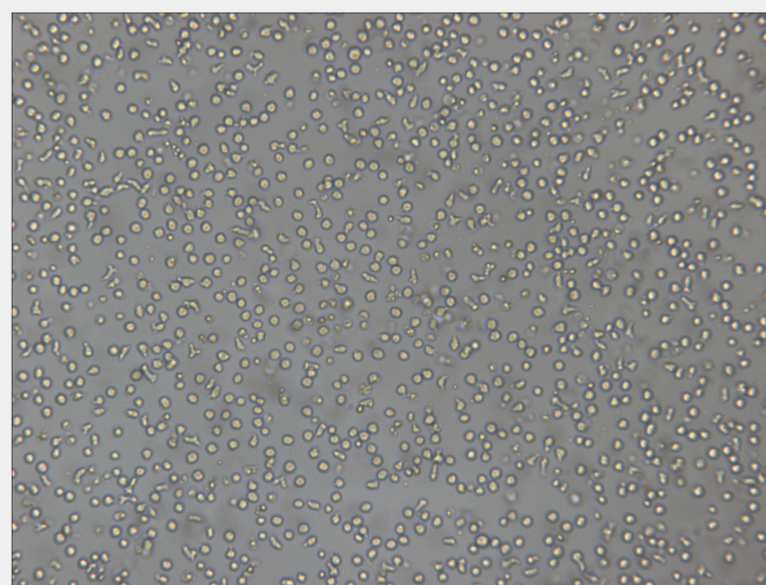
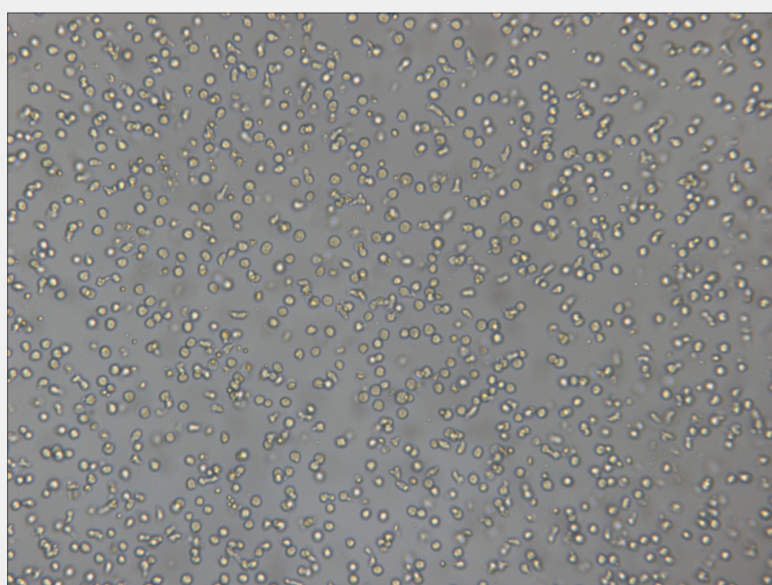
Size: 1×10^6 cells/t25culturebottle

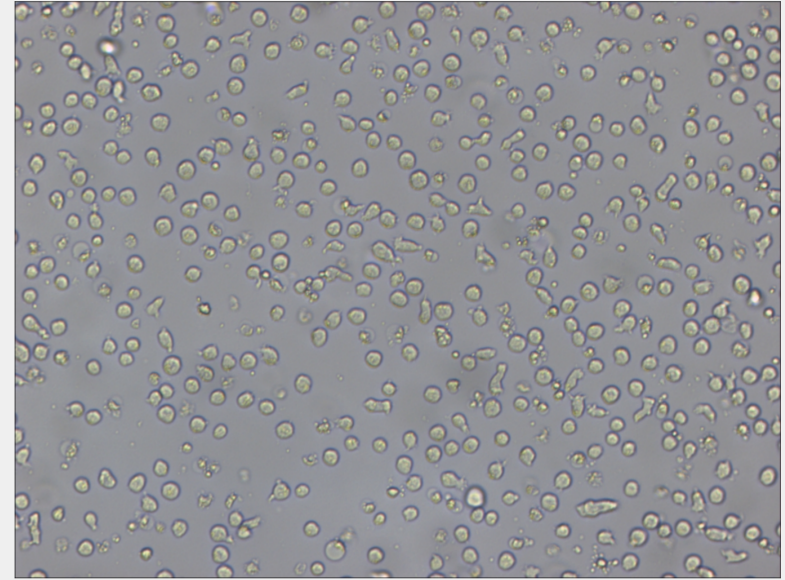
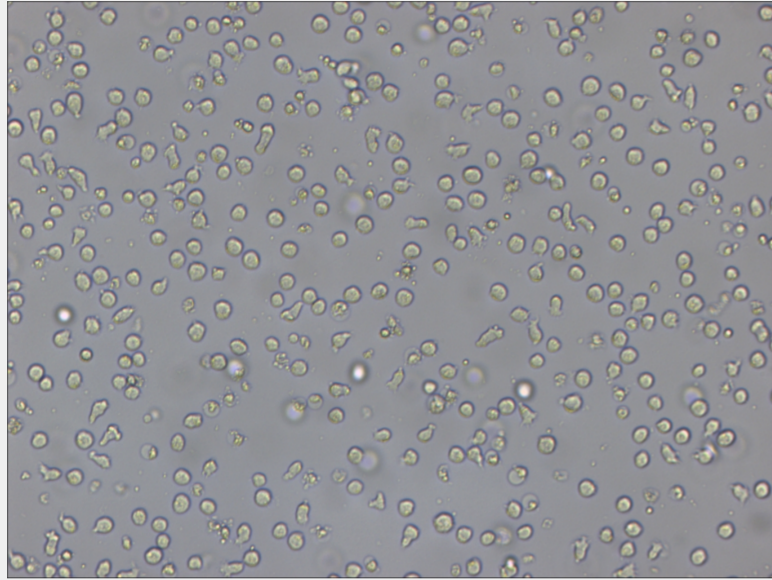


Specifications

Subculturing:

Cultures can be maintained by the addition of fresh medium or replacement of medium. Alternatively, cultures can be established by centrifugation with subsequent resuspension at the subcultivation ratio of 1:2-1:4.





All products are for RESEARCH USE ONLY. Not for diagnostic & therapeutic purposes!