

# CHO

**Catalog No: tcel61**



## Available Sizes

---

**Size:** 1×10<sup>6</sup>cells/t25culturebottle

---



## Specifications

---

### Application:

As mammalian host for the production of recombinant protein therapeutics.

---

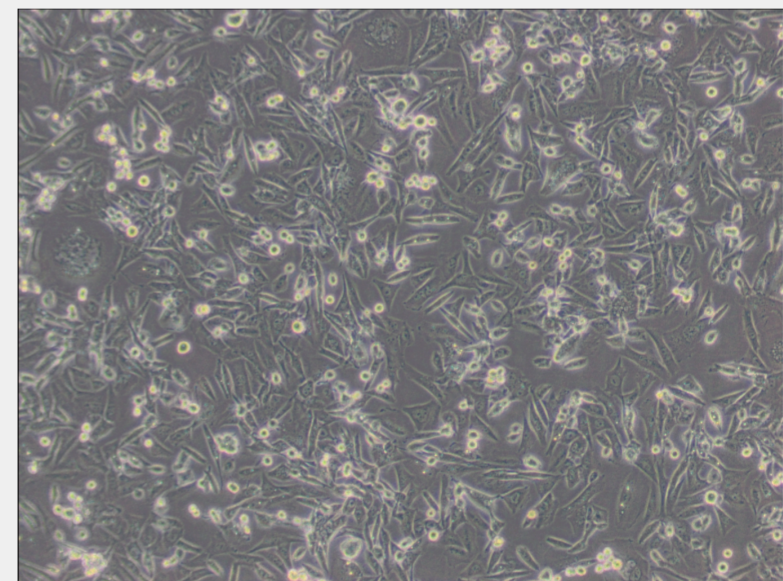
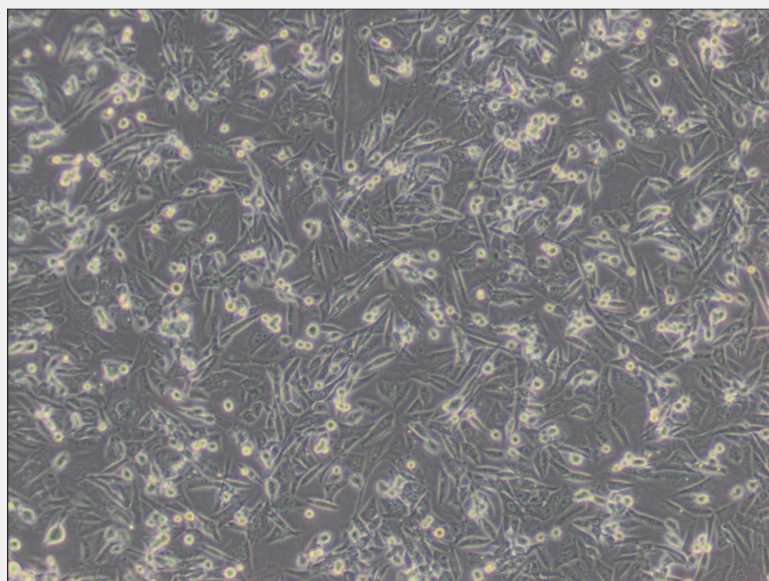
### Subculturing:

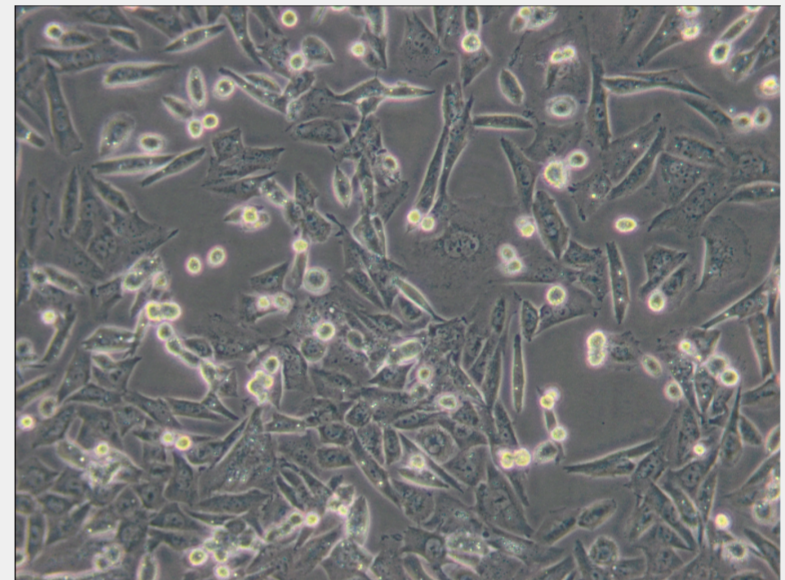
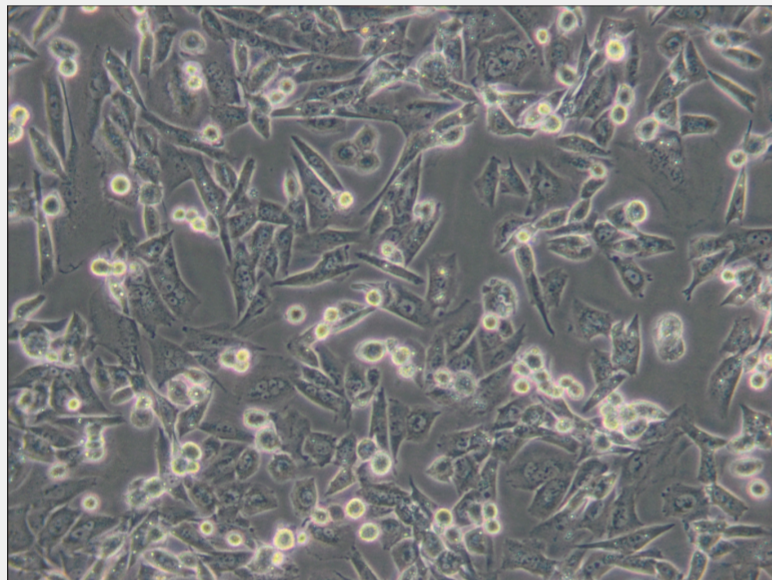
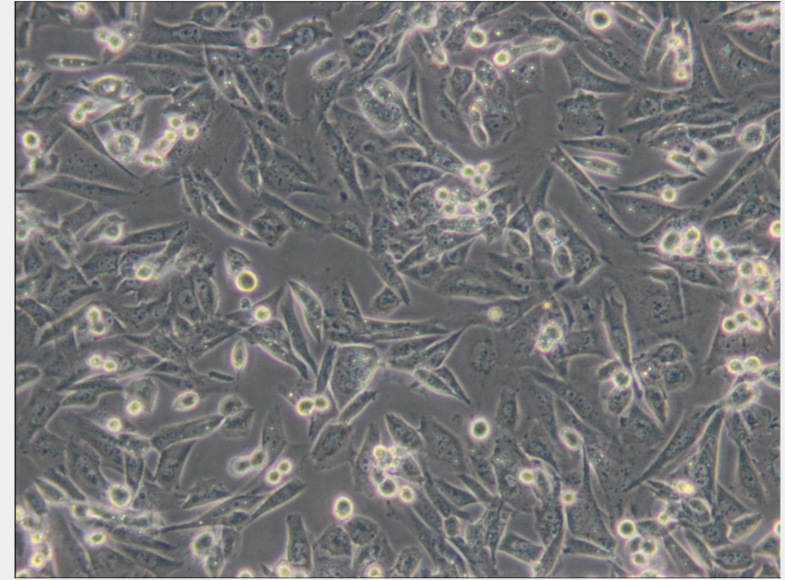
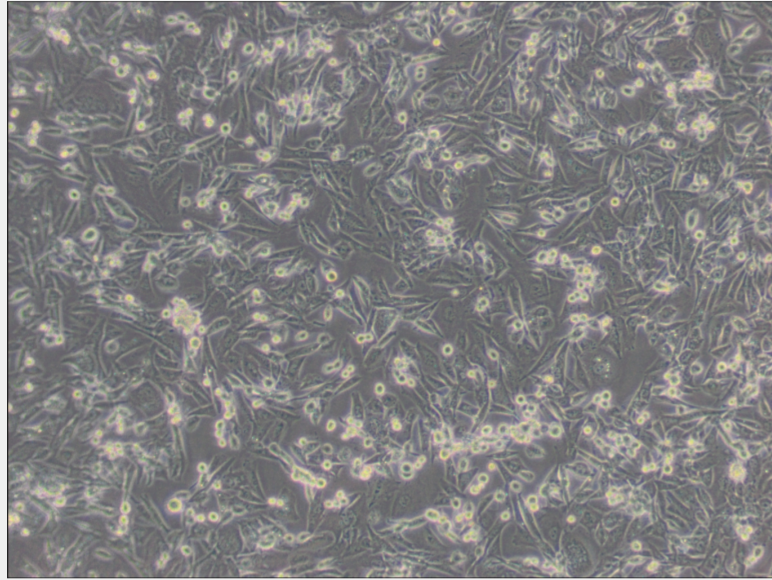
Remove and discard culture medium. Briefly rinse the cell layer with DPBS solution to remove all traces of serum that contains trypsin inhibitor. Add 1.0 to 2.0 mL of Trypsin-EDTA solution to flask and observe cells under an inverted microscope until cell layer is dispersed (usually within 2 to 3 minutes). Cells that are difficult to detach may be placed at 37°C to facilitate dispersal. Add 4.0 to 6.0 mL of complete growth medium and aspirate cells by gently pipetting. Add appropriate aliquots of the cell suspension to new culture vessels.

---

## Product Description

The CHO(Chinese hamster ovary) cell line was established in the 1960s from the ovary of the Chinese hamster. CHO cells are used in studies of genetics, toxicity screening, nutrition and gene expression, particularly to express recombinant proteins. Application: as mammalian host for the production of recombinant protein therapeutics.





All products are for RESEARCH USE ONLY. Not for diagnostic & therapeutic purposes!