

CFPAC-1

Catalog No: tcel59



Available Sizes

Size: 1×10⁶cells/t25culturebottle



Specifications

Application:

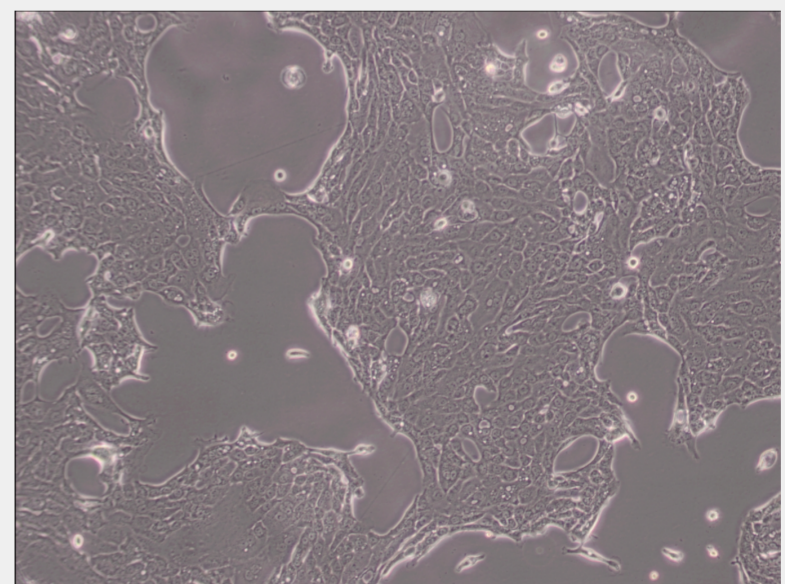
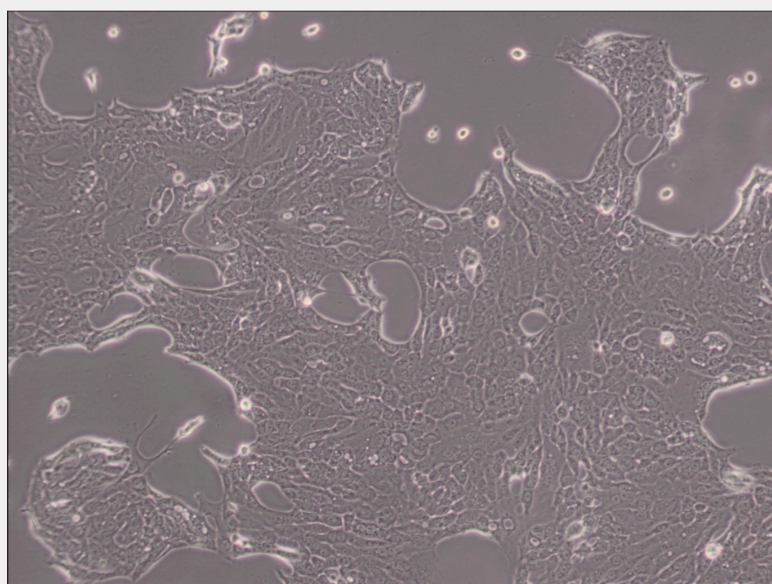
transfection host

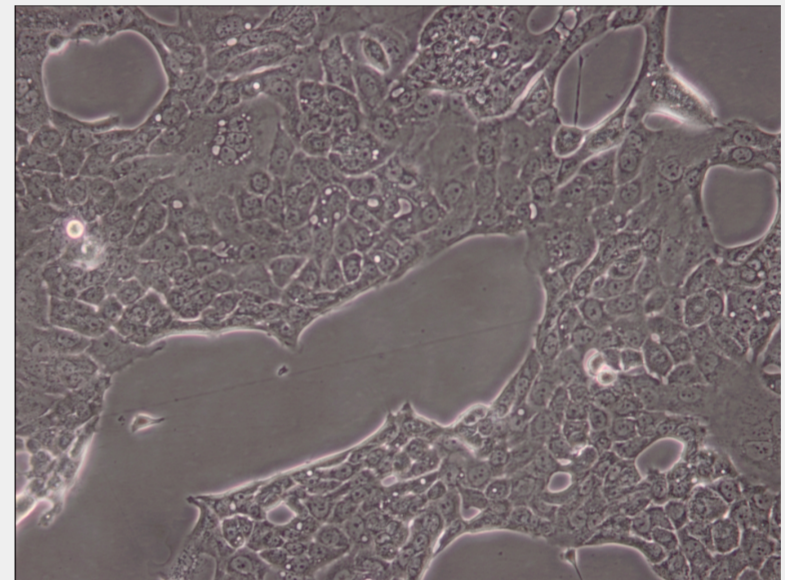
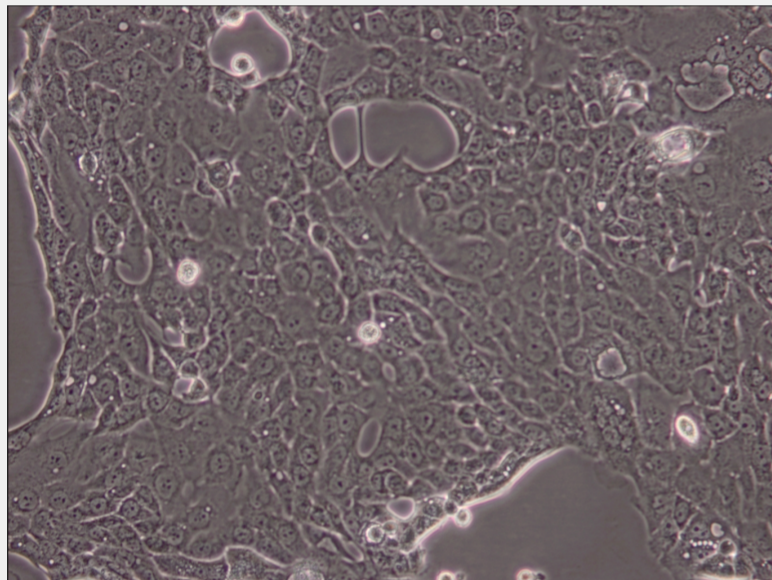
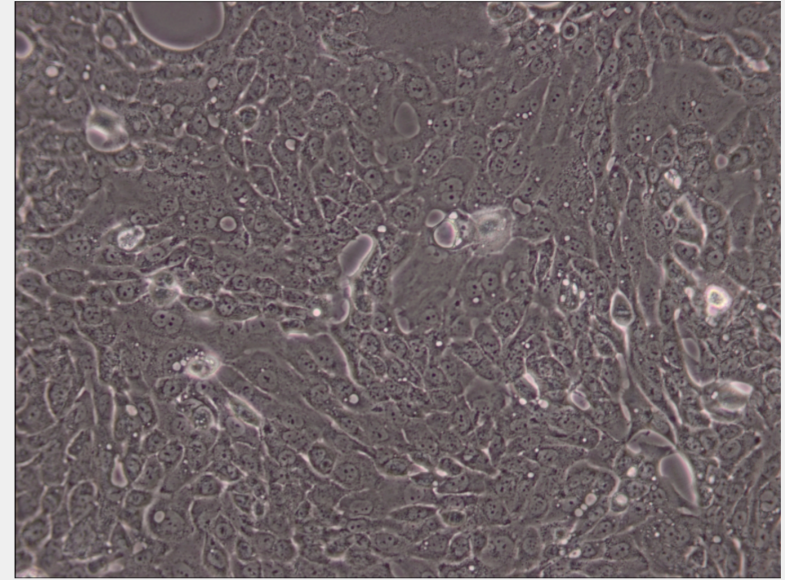
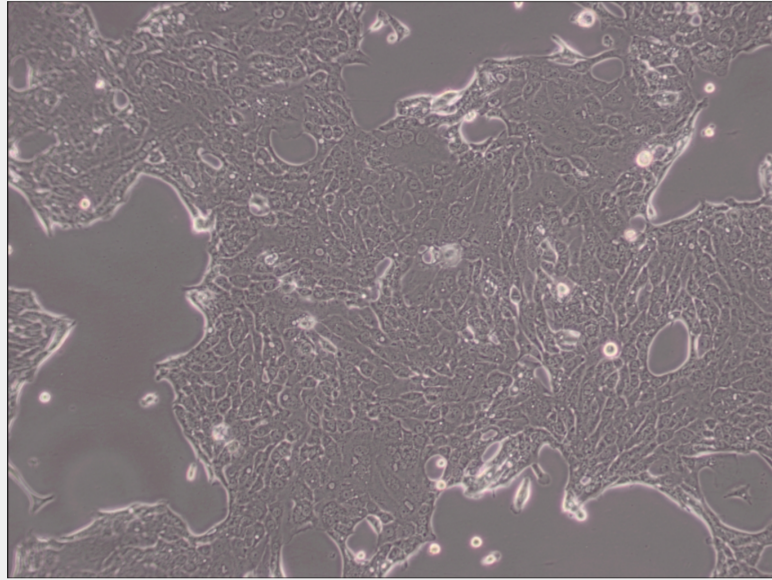
Subculturing:

Remove and discard culture medium. Briefly rinse the cell layer with DPBS solution to remove all traces of serum that contains trypsin inhibitor. Add 1.0 to 2.0 mL of Trypsin-EDTA solution to flask and observe cells under an inverted microscope until cell layer is dispersed (usually within 2 to 3 minutes). Cells that are difficult to detach may be placed at 37°C to facilitate dispersal. Add 4.0 to 6.0 mL of complete growth medium and aspirate cells by gently pipetting. Add appropriate aliquots of the cell suspension to new culture vessels.

Product Description

The cells exhibit ion transport activities consistent with cystic fibrosis and express the product of the CF gene(cystic fibrosis transmembrane regulator, CFTR).CFPAC-1 cells show no effect of cAMP agonists, adenylyl cyclase stimulators or phosphodiesterase inhibitors on Cl⁻ flux, but do respond to Ca²⁺ ionophores with increase Cl⁻ efflux.The cells have the most common form of the CF mutation, deletion of three nucleotides resulting in the absence of phenylalanine at position 508.CFPAC-1 cells have epithelial morphology and polarization with apical microvilli, tight junctions and gap junctions.





All products are for RESEARCH USE ONLY. Not for diagnostic & therapeutic purposes!