

## CCRF-CEM [CCRF CEM]

Catalog No: tcel58



### Available Sizes

---

**Size:** 1×10<sup>6</sup>cells/t25culturebottle

---



### Specifications

---

**Application:**

transfection host

---

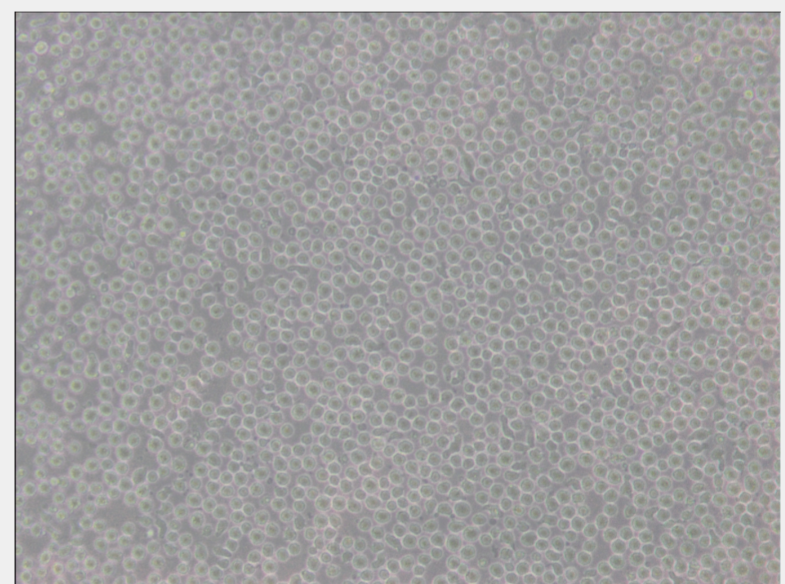
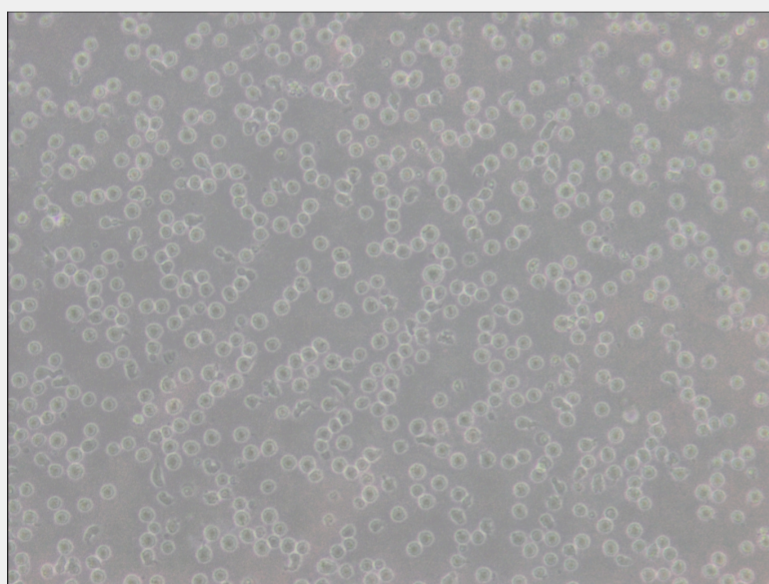
**Subculturing:**

Cultures can be maintained by the addition of fresh medium or replacement of medium. Alternatively, cultures can be established by centrifugation with subsequent resuspension at the subcultivation ratio of 1:3-1:5.

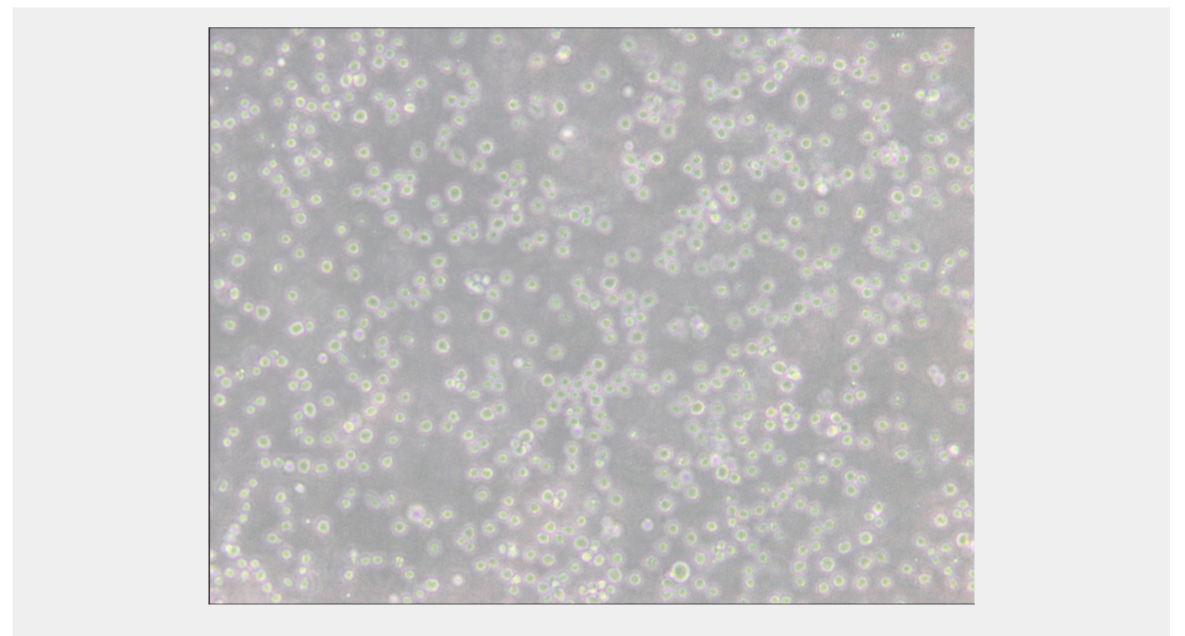
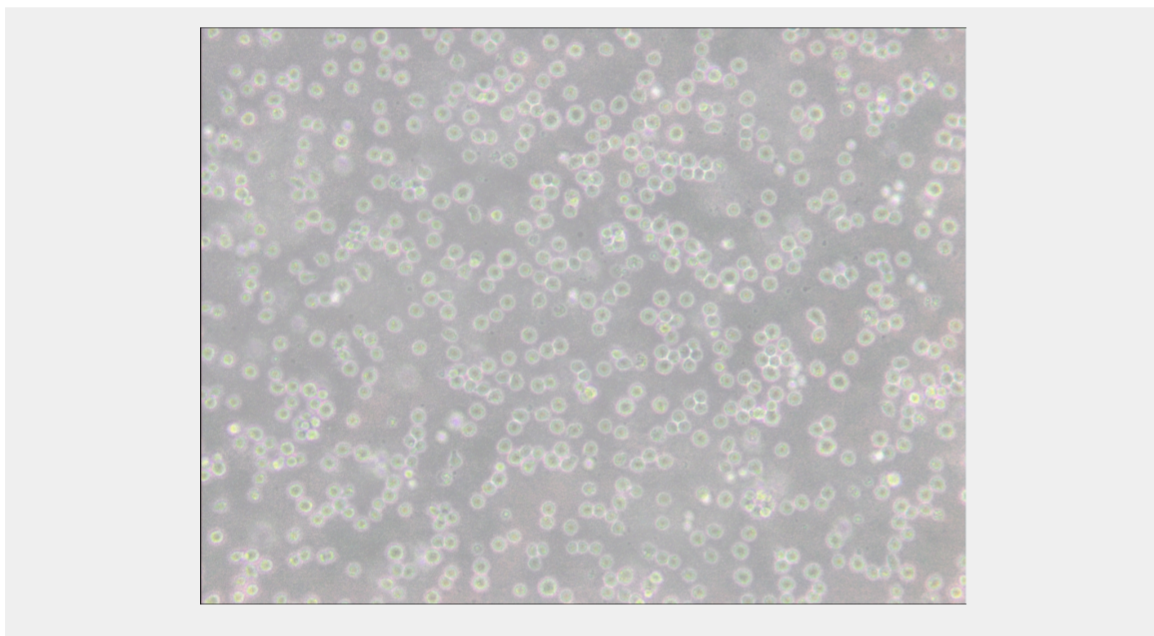
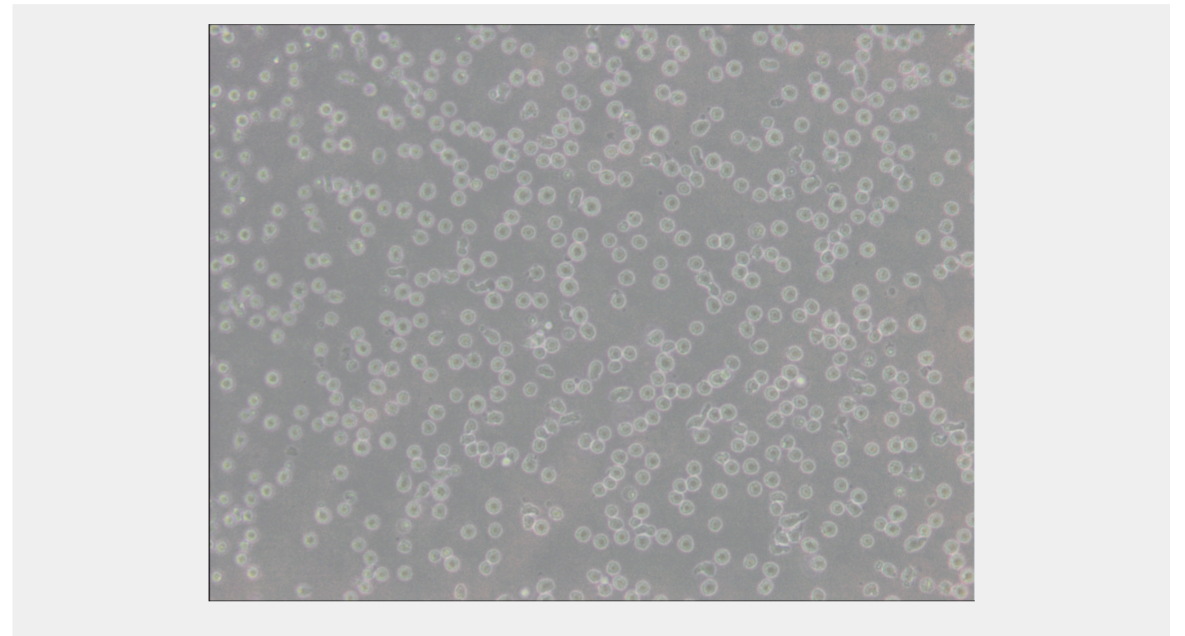
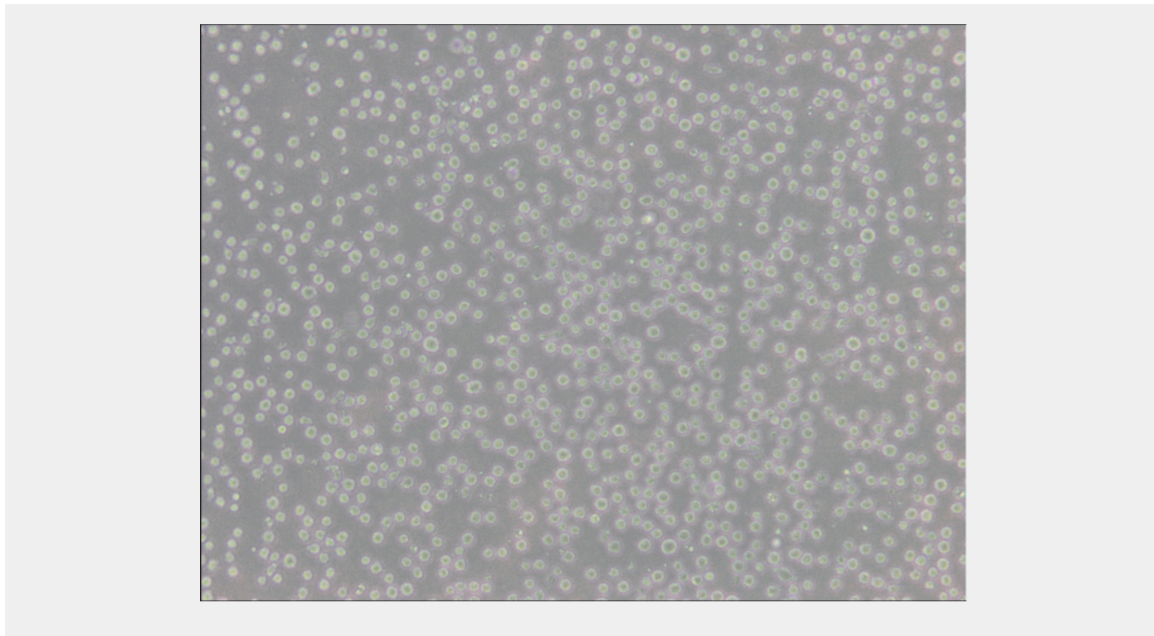
---

### Product Description

CCRF-CEM cells were derived from the peripheral blood buffy coat of a child(CEM) with acute lymphoblastic leukemia who had originally presented with lymphosarcoma. Do not centrifuge after thawing.







All products are for RESEARCH USE ONLY. Not for diagnostic & therapeutic purposes!