

CA46

Catalog No: tcel49



Available Sizes

Size: 1×10⁶cells/t25culturebottle



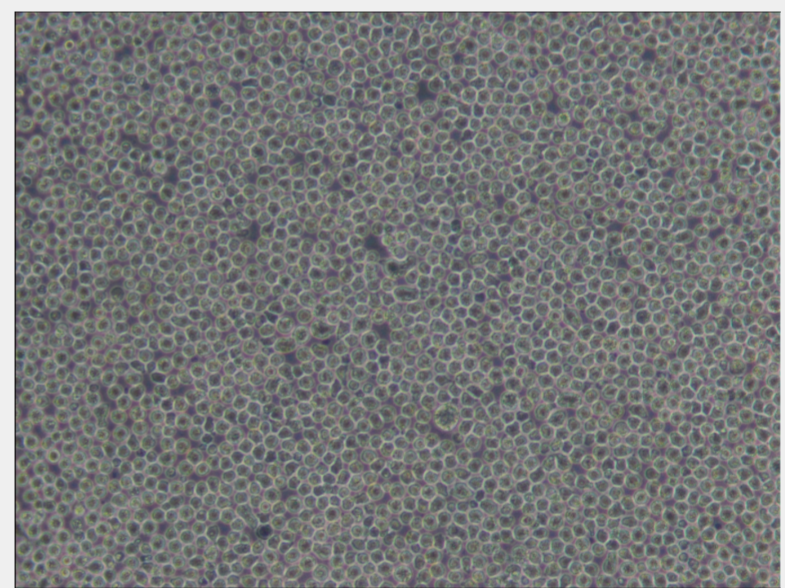
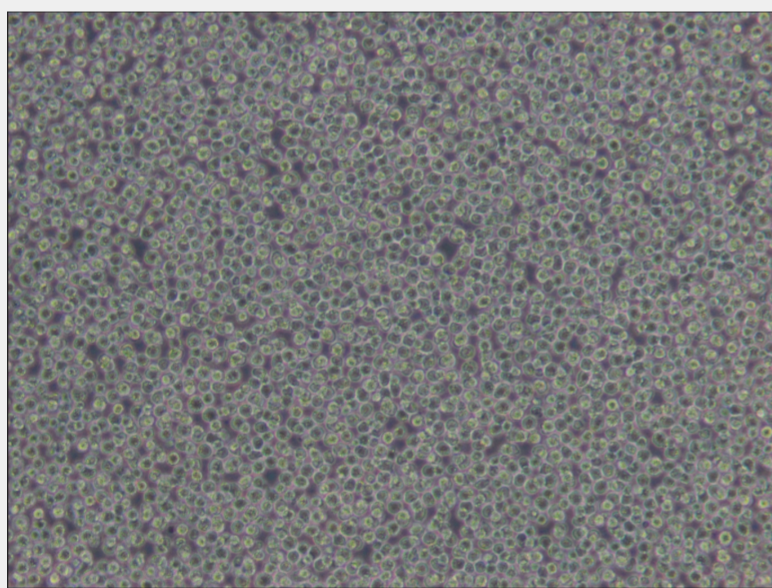
Specifications

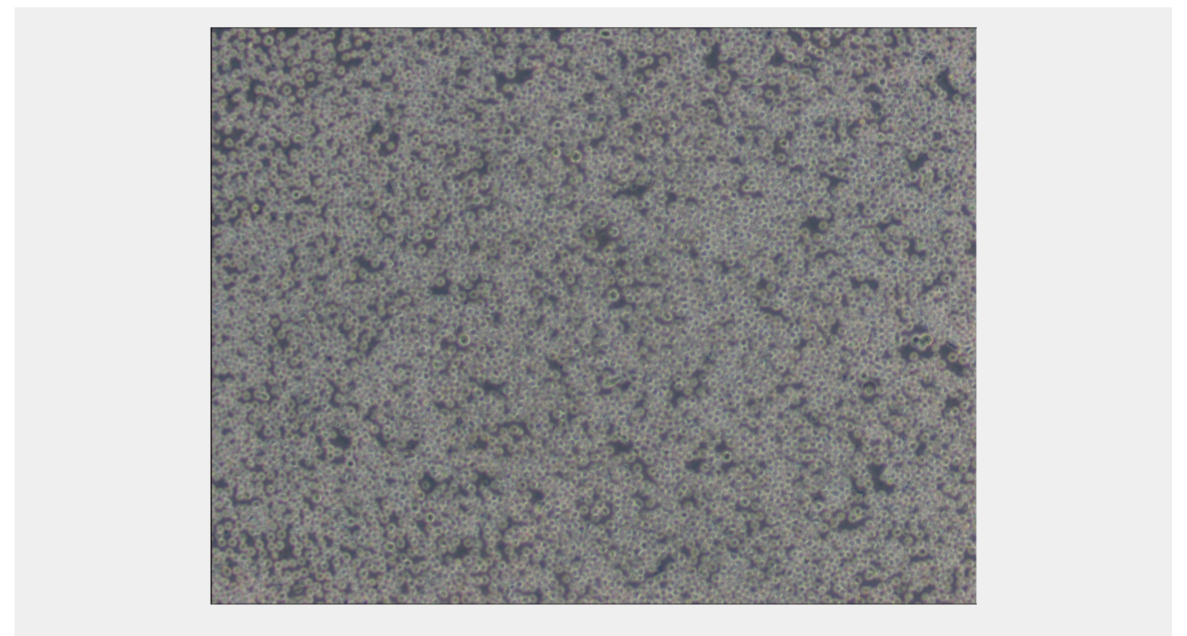
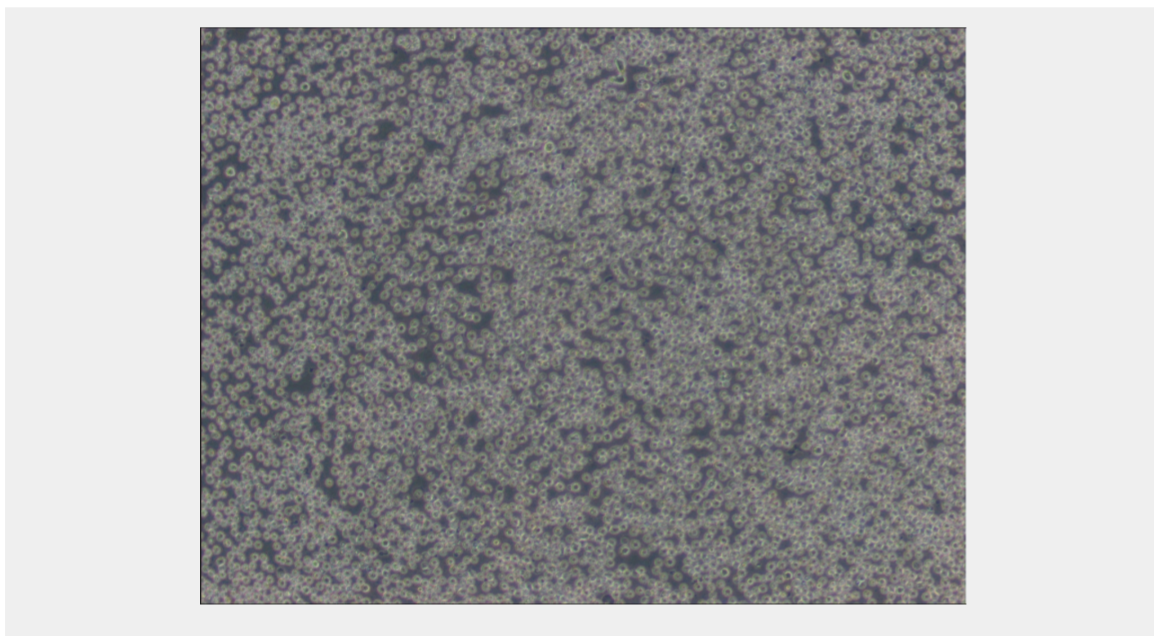
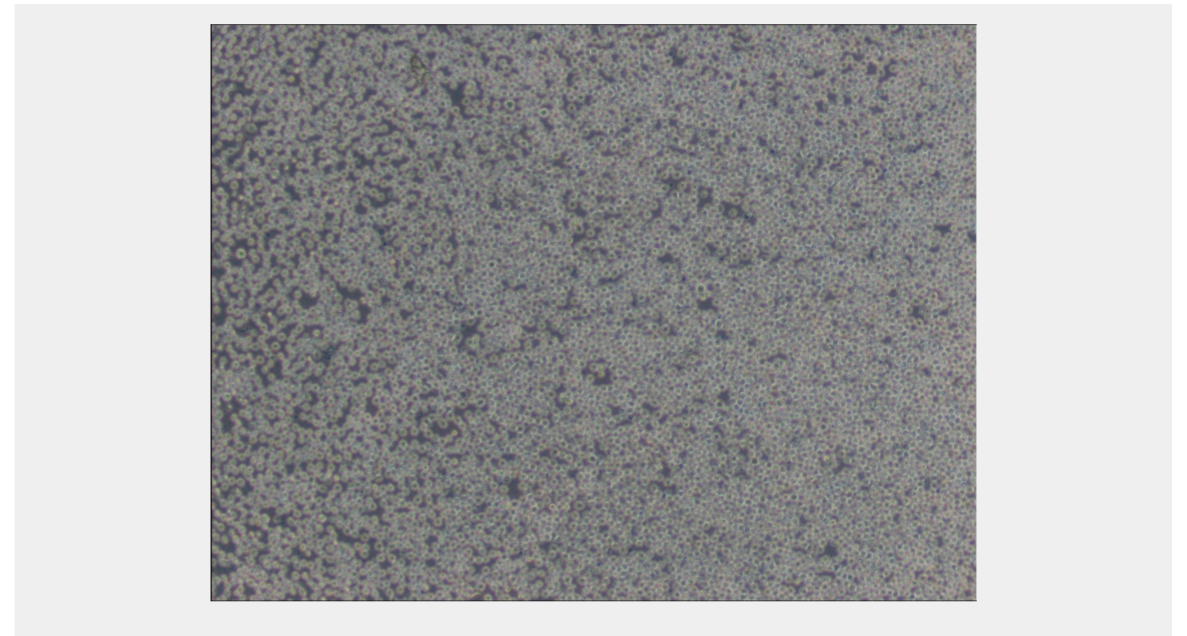
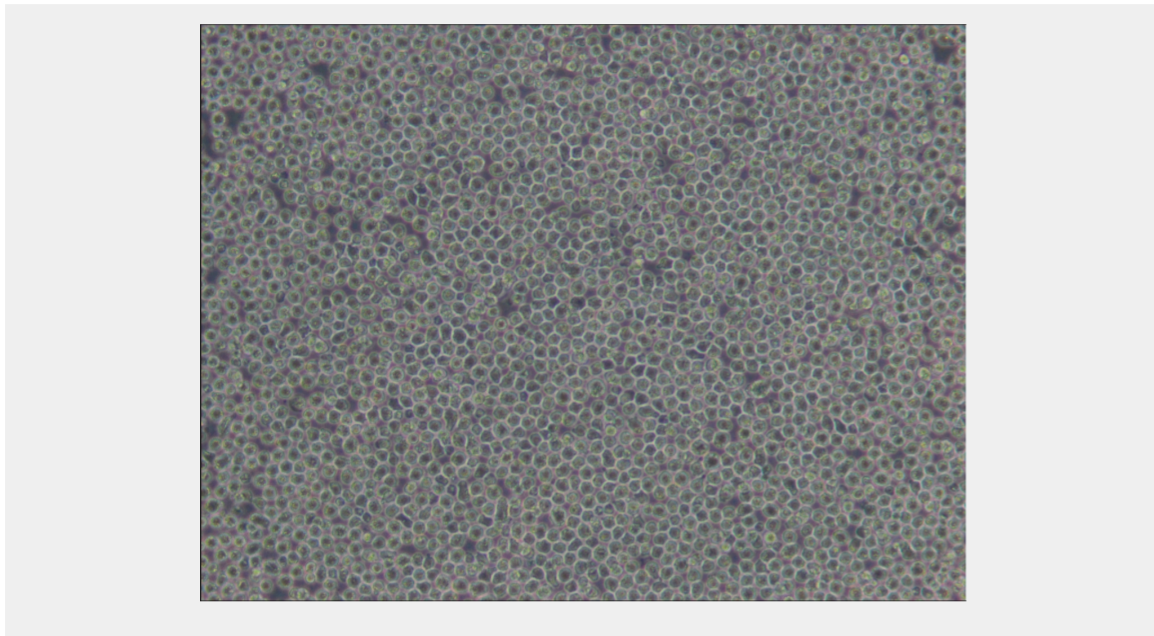
Subculturing:

Cultures can be maintained by the addition of fresh medium or replacement of medium. Alternatively, cultures can be established by centrifugation with subsequent resuspension at 1 to 2×10⁵ viable cells/ml. Maintain cell density between 1×10⁵ and 1×10⁶ viable cells/ml.

Product Description

The cells are EBNA negative and are negative for Fc receptors. Approximately 12% of the cells express complement receptors.





All products are for RESEARCH USE ONLY. Not for diagnostic & therapeutic purposes!