

# Ca Ski

**Catalog No: tcel48**



## Available Sizes

**Size:** 1×10<sup>6</sup>cells/t25culturebottle



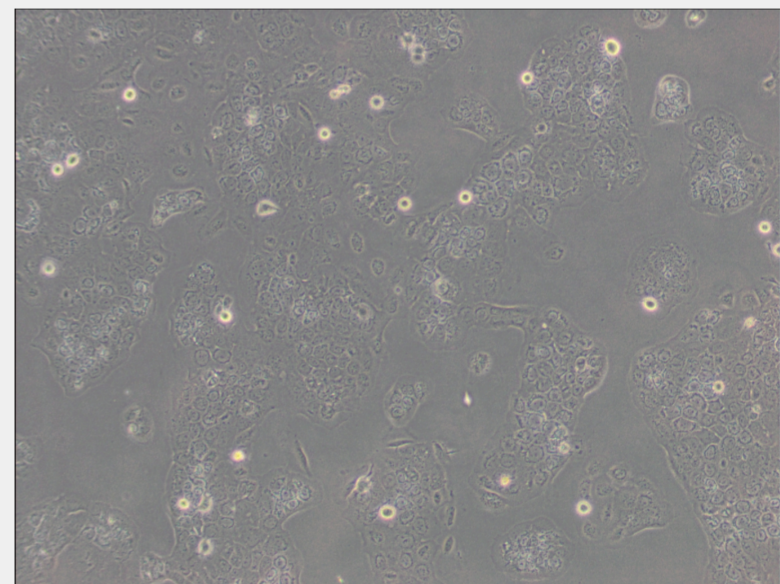
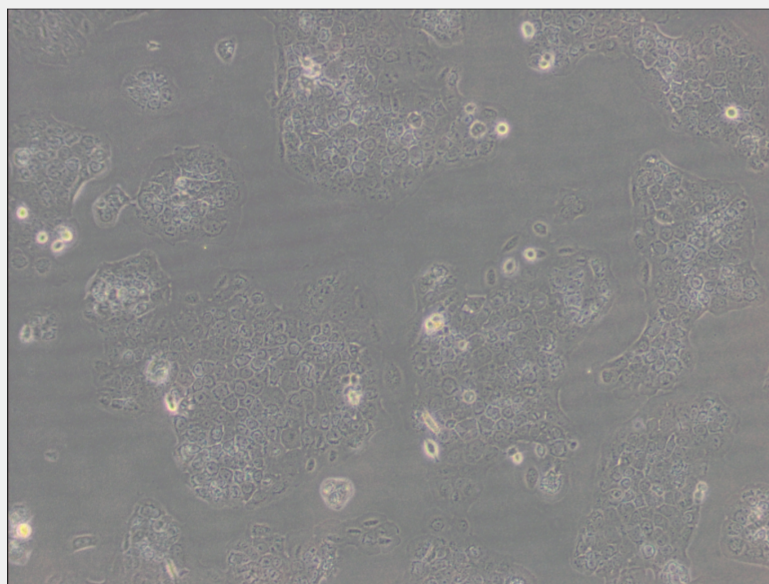
## Specifications

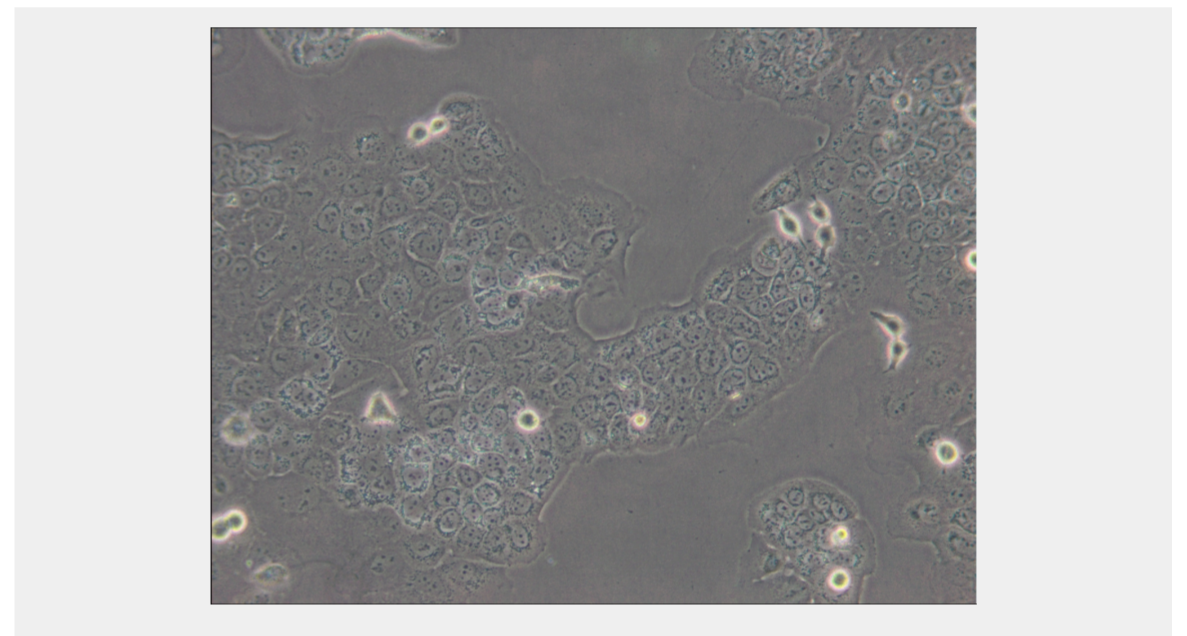
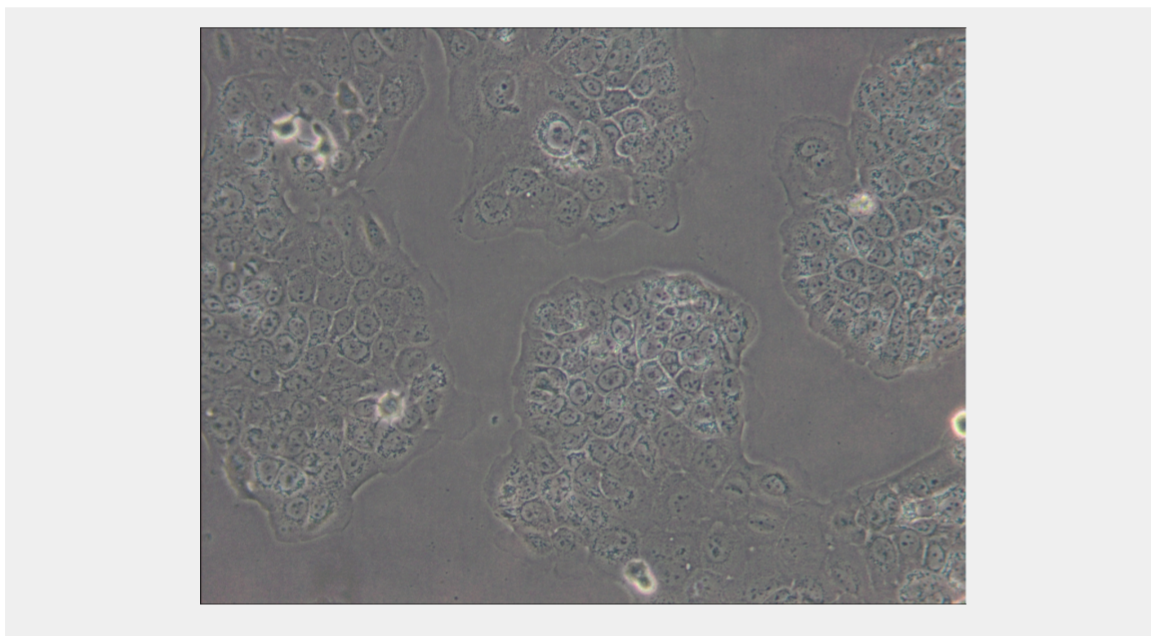
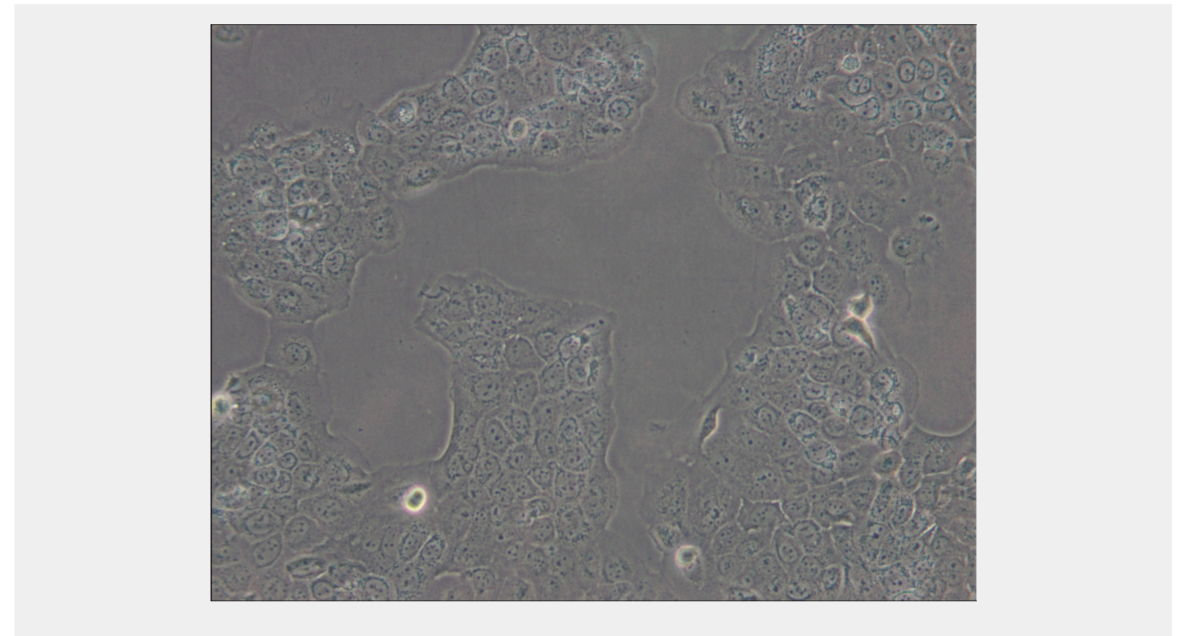
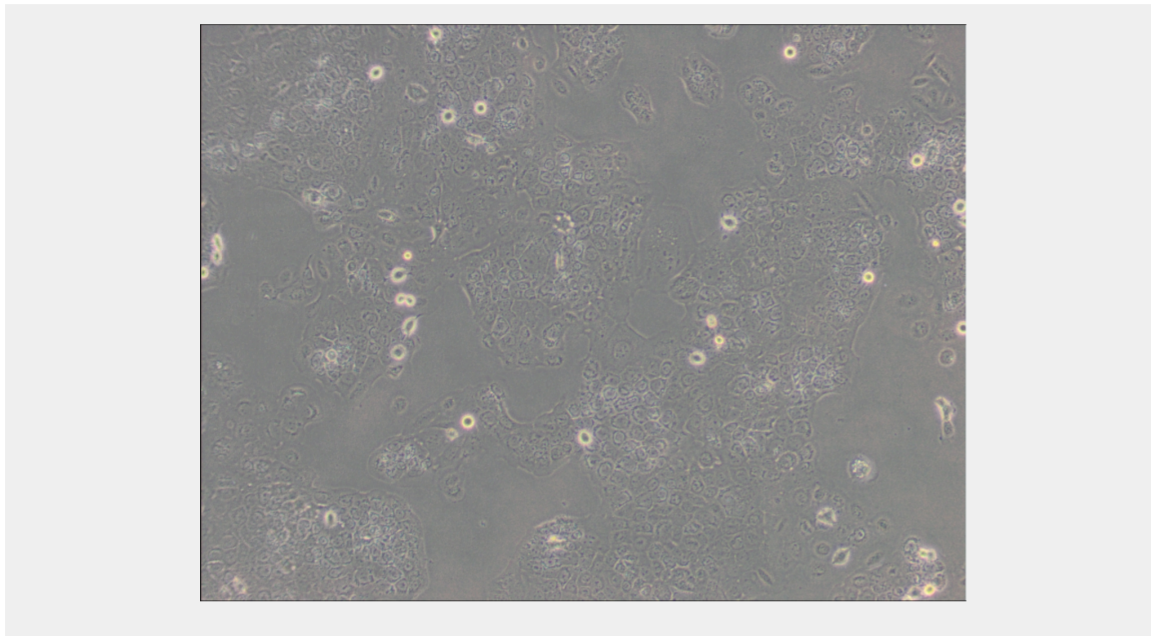
### Subculturing:

Remove and discard culture medium. Briefly rinse the cell layer with DPBS solution to remove all traces of serum that contains trypsin inhibitor. Add 1.0 to 2.0 mL of Trypsin-EDTA solution to flask and observe cells under an inverted microscope until cell layer is dispersed (usually within 2 to 3 minutes). Cells that are difficult to detach may be placed at 37°C to facilitate dispersal. Add 4.0 to 6.0 mL of complete growth medium and aspirate cells by gently pipetting. Add appropriate aliquots of the cell suspension to new culture vessels.

## Product Description

The cells are reported to contain an integrated human papillomavirus type 16 genome(HPV-16, about 600 copies per cell) as well as sequences related to HPV-18. ATCC has confirmed this cell line is positive for the presence of human papilloma virus(HPV) viral sequences via PCR.





All products are for RESEARCH USE ONLY. Not for diagnostic & therapeutic purposes!