

C-33 A

Catalog No: tcel45



Available Sizes

Size: 1×10⁶cells/t25culturebottle



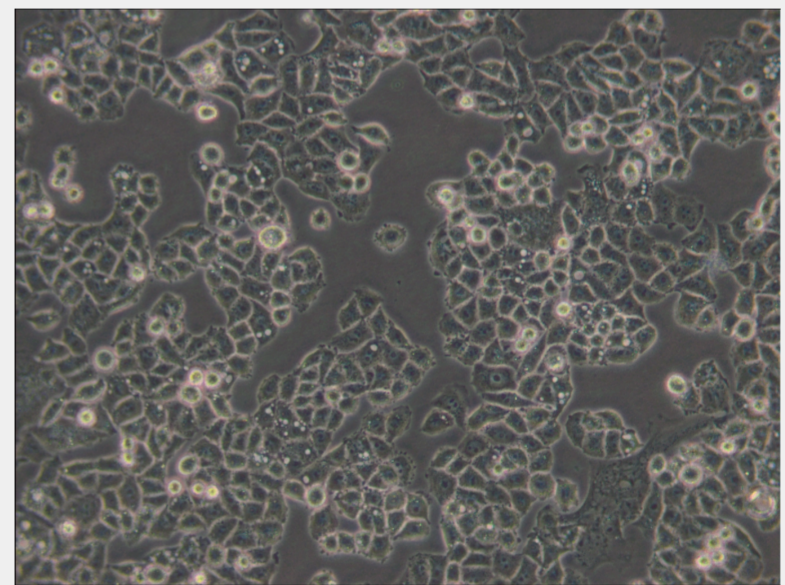
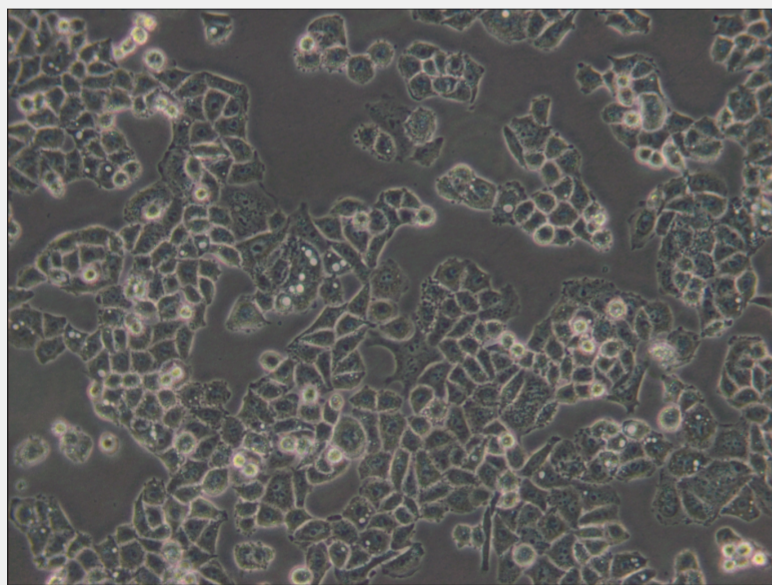
Specifications

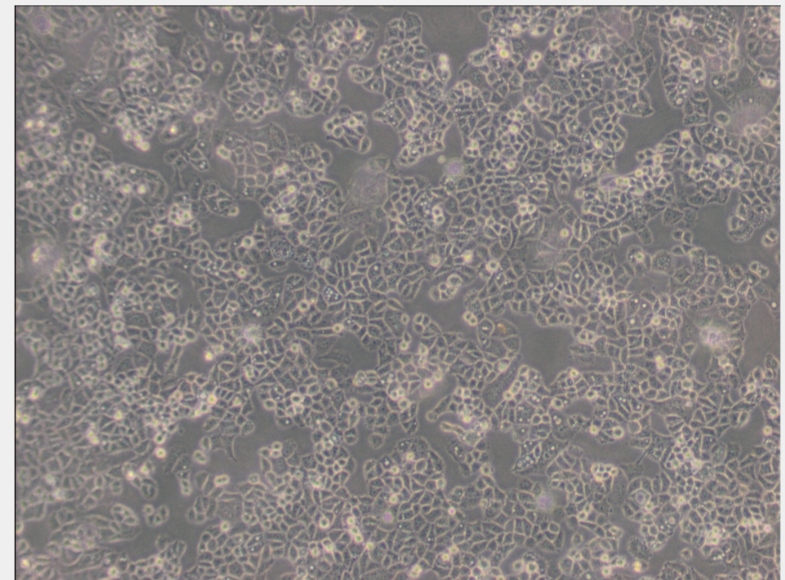
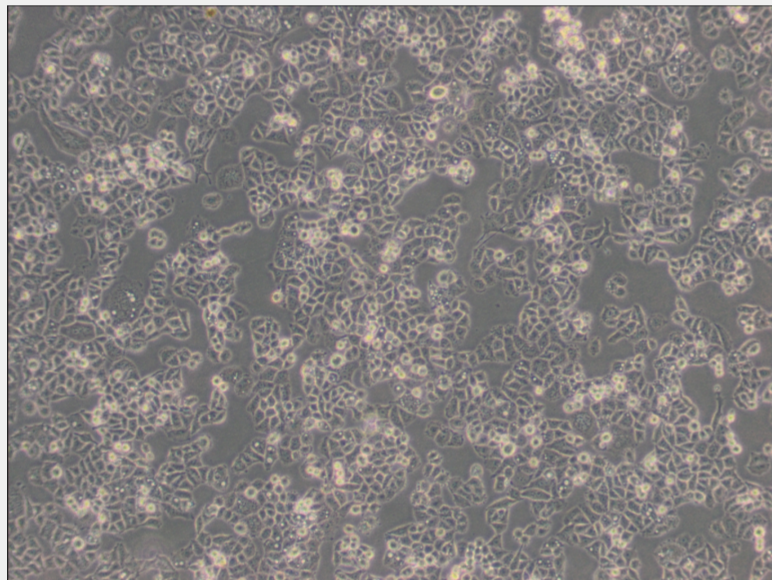
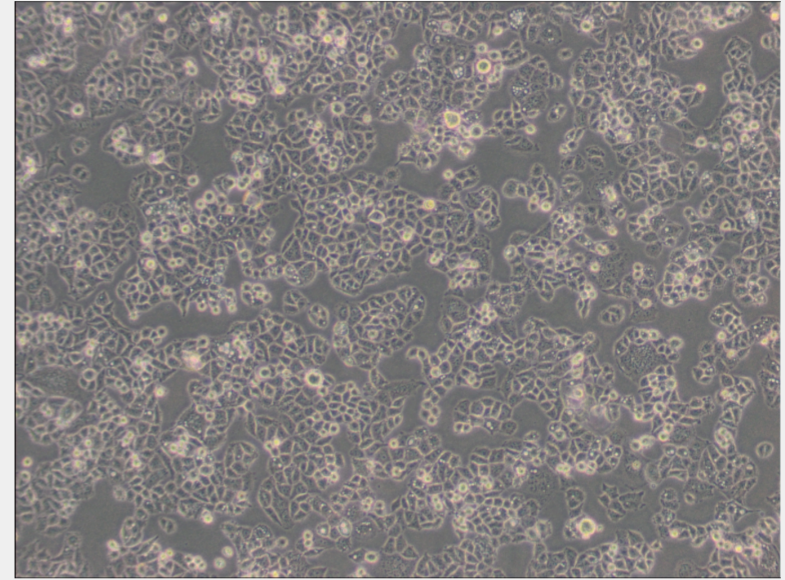
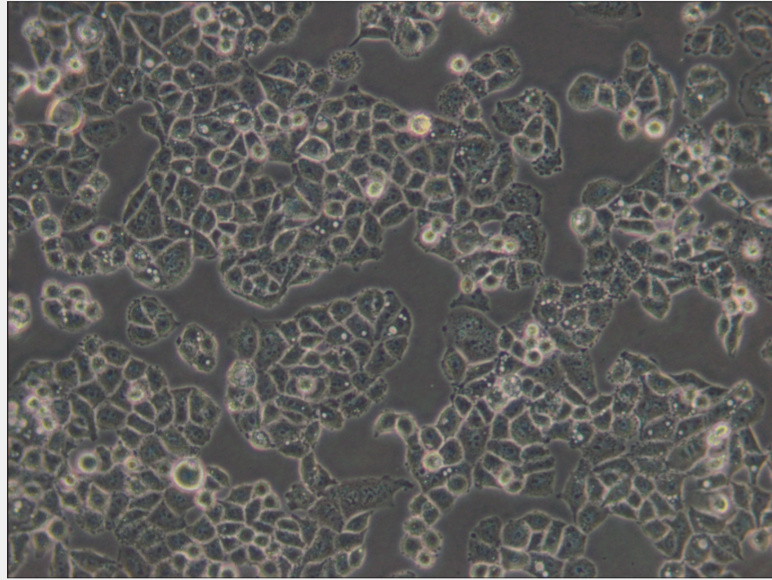
Subculturing:

Remove and discard culture medium. Briefly rinse the cell layer with DPBS solution to remove all traces of serum that contains trypsin inhibitor. Add 1.0 to 2.0 mL of Trypsin-EDTA solution to flask and observe cells under an inverted microscope until cell layer is dispersed (usually within 2 to 3 minutes). Cells that are difficult to detach may be placed at 37°C to facilitate dispersal. Add 4.0 to 6.0 mL of complete growth medium and aspirate cells by gently pipetting. Add appropriate aliquots of the cell suspension to new culture vessels.

Product Description

The line exhibited a hypodiploid karyotype initially, and an epithelial morphology. Karyological instability was observed with continued passage. The retinoblastoma protein(pRB) is present but abnormal in size. Expression of p53 is elevated, and there is a point mutation at codon 273 resulting in a Arg→Cys substitution. The cells are negative for human papillomavirus DNA and RNA. The C-33 A cell line is one of a series of lines derived by N. Auersperg from cervical cancer biopsies.





All products are for RESEARCH USE ONLY. Not for diagnostic & therapeutic purposes!