

BNL CL.2

Catalog No: tcel37



Available Sizes

Size: 1×10⁶cells/t25culturebottle



Specifications

Application:

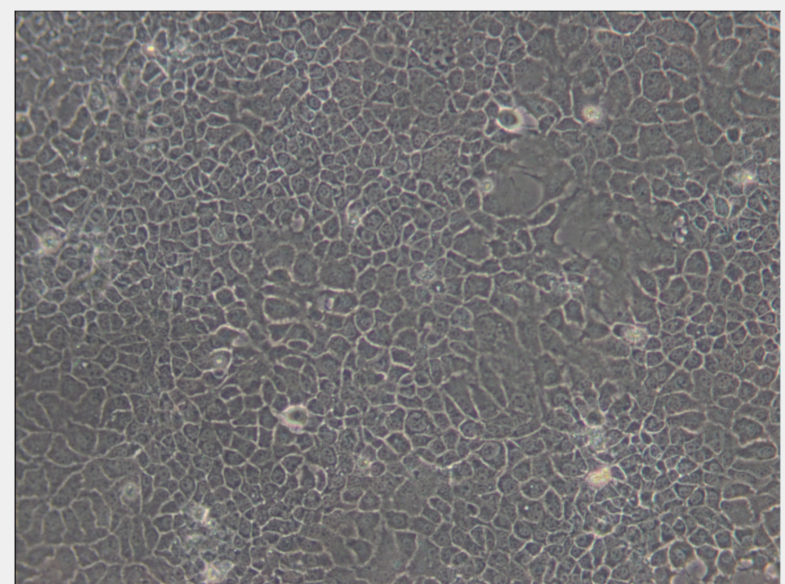
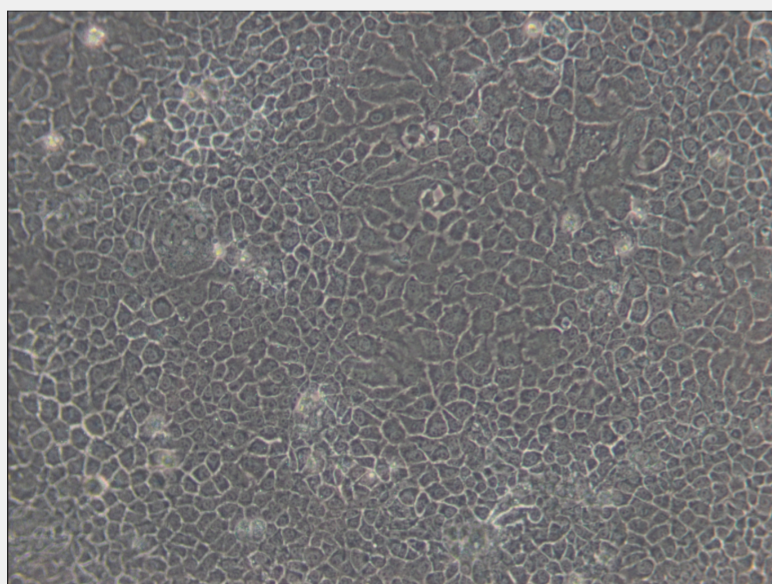
Control for F4 G6PD Knockout.

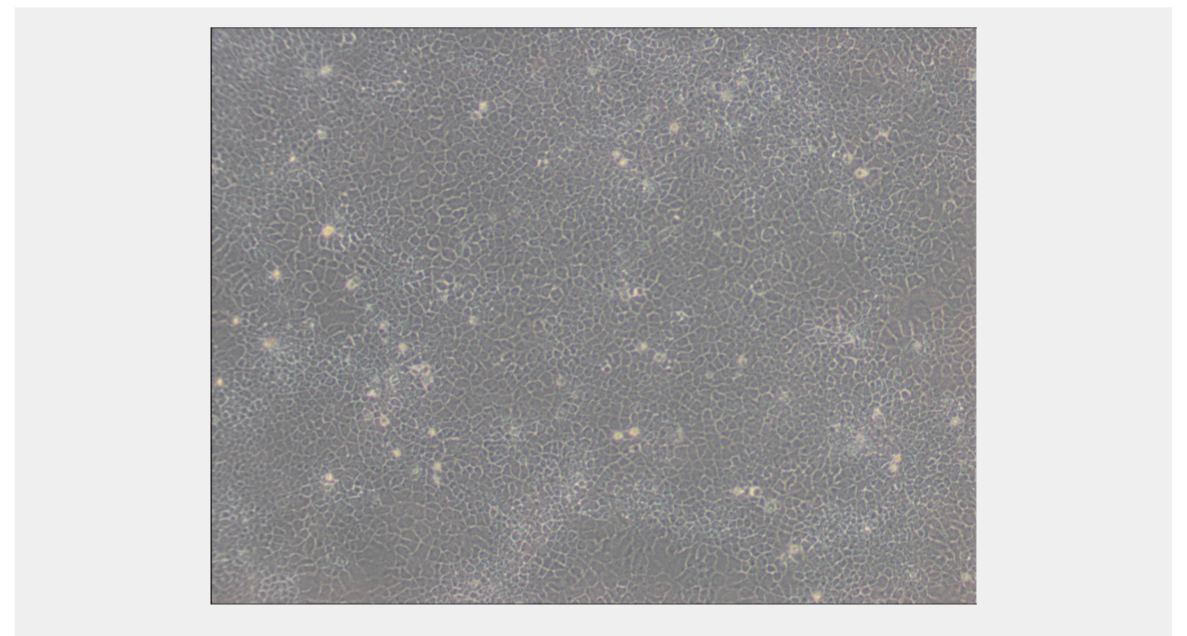
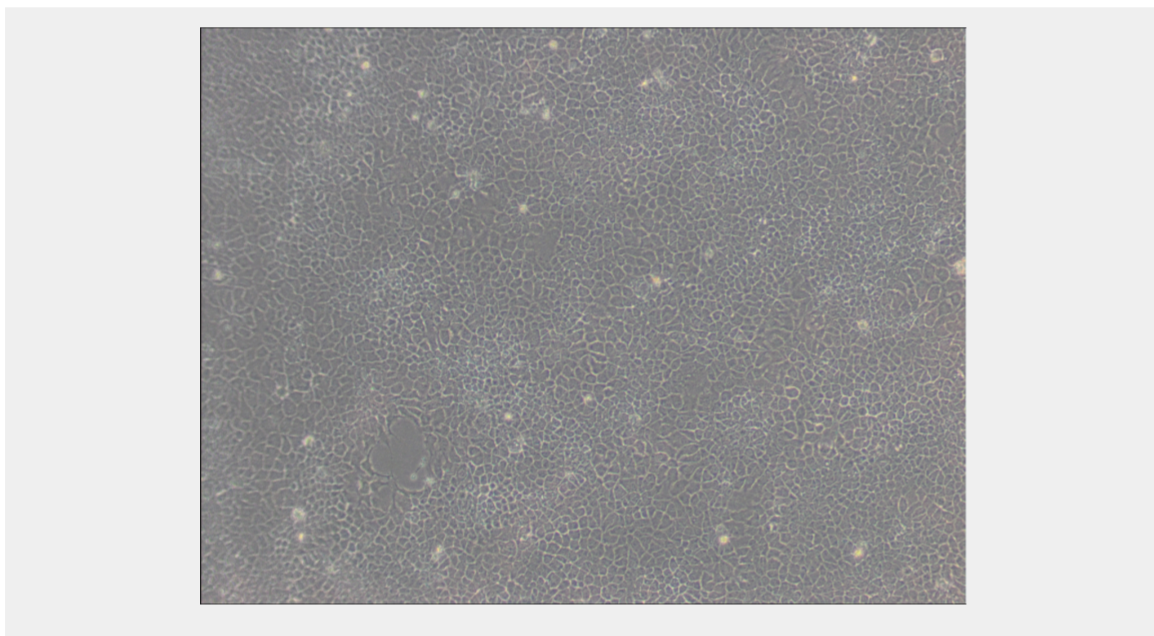
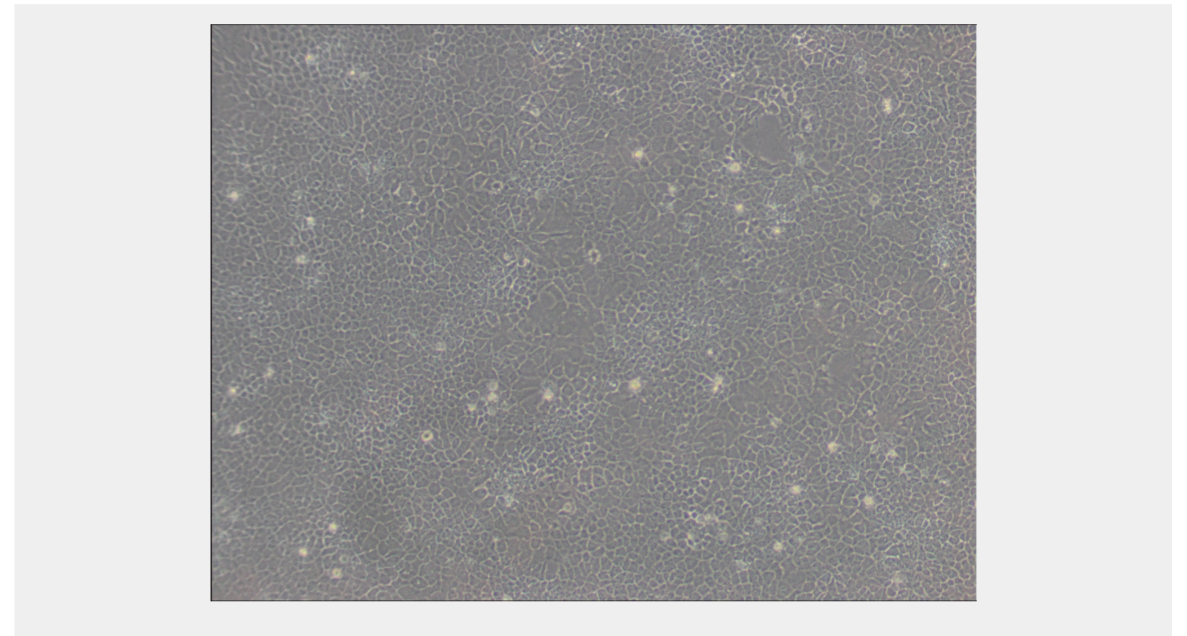
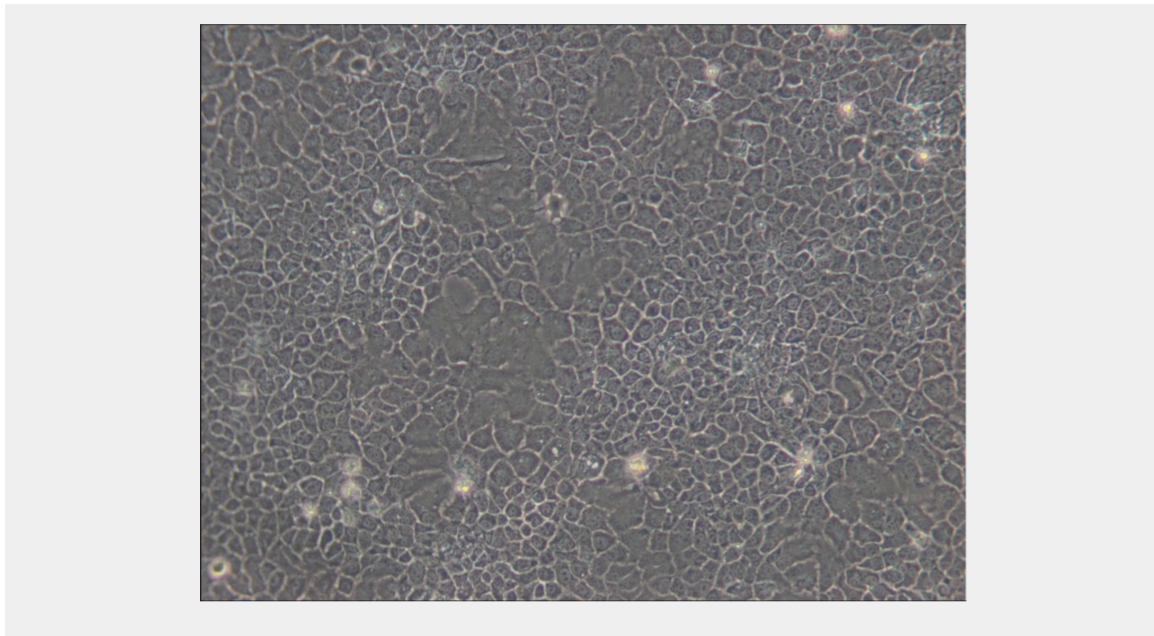
Subculturing:

Remove and discard culture medium. Briefly rinse the cell layer with DPBS solution to remove all traces of serum that contains trypsin inhibitor. Add 1.0 to 2.0 mL of Trypsin-EDTA solution to flask and observe cells under an inverted microscope until cell layer is dispersed (usually within 2 to 3 minutes). Cells that are difficult to detach may be placed at 37°C to facilitate dispersal. Add 4.0 to 6.0 mL of complete growth medium and aspirate cells by gently pipetting. Add appropriate aliquots of the cell suspension to new culture vessels.

Product Description

The line was selected to grow in medium containing ornithine and phenylalanine in place of arginine and tyrosine. Tested and found negative for ectromelia virus(mousepox).





All products are for RESEARCH USE ONLY. Not for diagnostic & therapeutic purposes!