

BHK-21 [C-13]

Catalog No: tcel34



Available Sizes

Size: 1×10⁶cells/t25culturebottle



Specifications

Application:

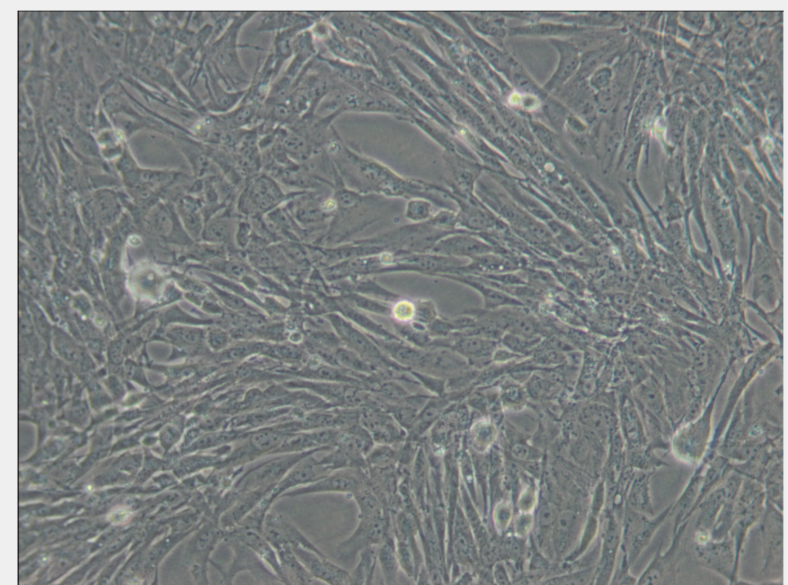
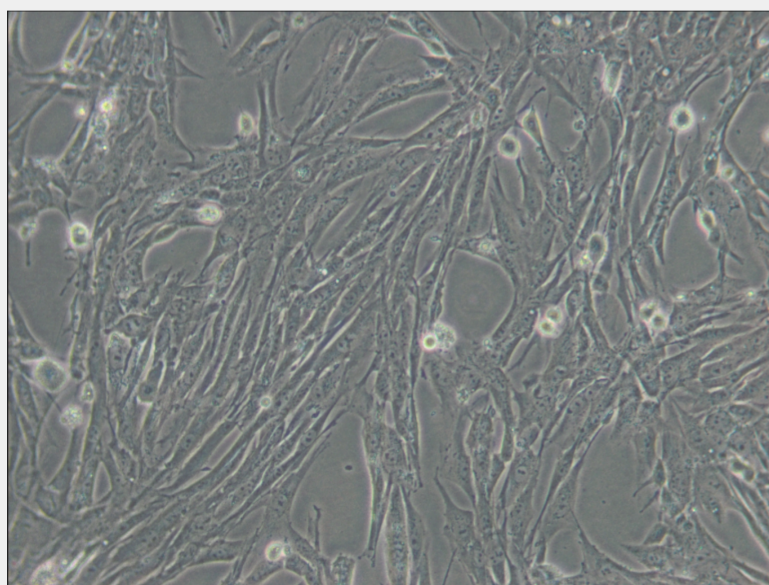
The World Organization for Animal Health(OIE) uses these cells for routine diagnosis of rabies. This cell line has been used as a host for transformation with expression vectors containing selectable and amplifiable marker DNAs.

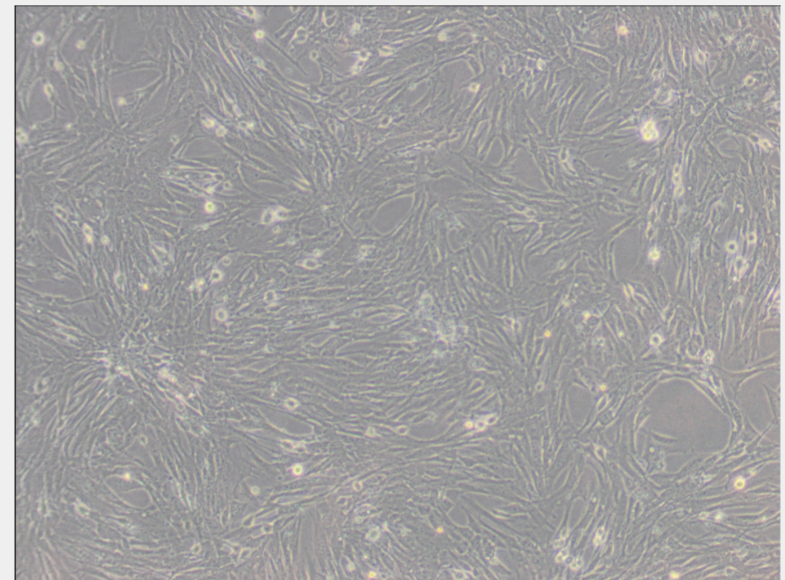
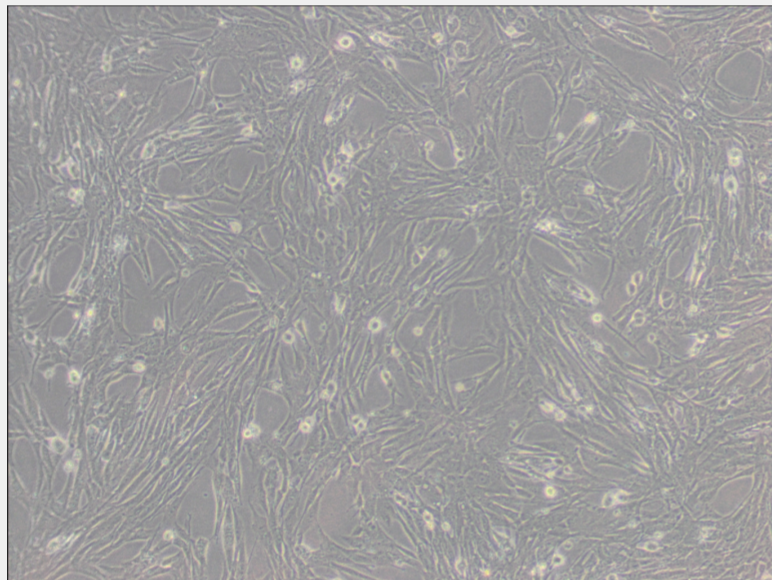
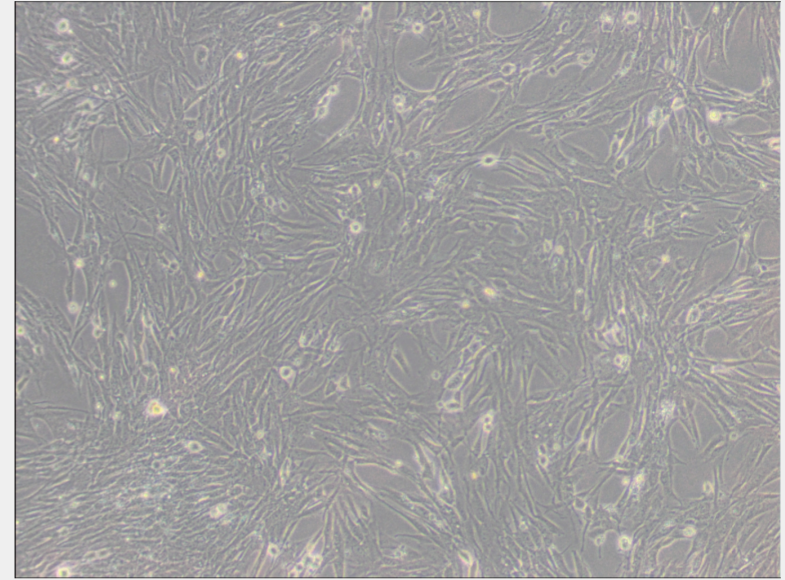
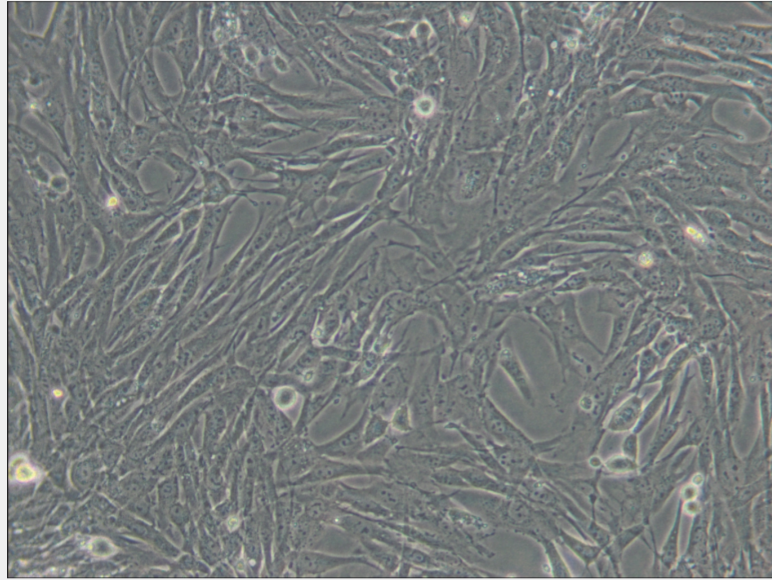
Subculturing:

Remove and discard culture medium. Briefly rinse the cell layer with DPBS solution to remove all traces of serum that contains trypsin inhibitor. Add 1.0 to 2.0 mL of Trypsin-EDTA solution to flask and observe cells under an inverted microscope until cell layer is dispersed (usually within 2 to 3 minutes). Cells that are difficult to detach may be placed at 37°C to facilitate dispersal. Add 4.0 to 6.0 mL of complete growth medium and aspirate cells by gently pipetting. Add appropriate aliquots of the cell suspension to new culture vessels.

Product Description

This cell line is reverse transcriptase negative.





All products are for RESEARCH USE ONLY. Not for diagnostic & therapeutic purposes!