

# AsPC-1

**Catalog No: tcel27**



## Available Sizes

---

**Size:** 1×10<sup>6</sup>cells/t25culturebottle

---



## Specifications

---

### Application:

transfection host

---

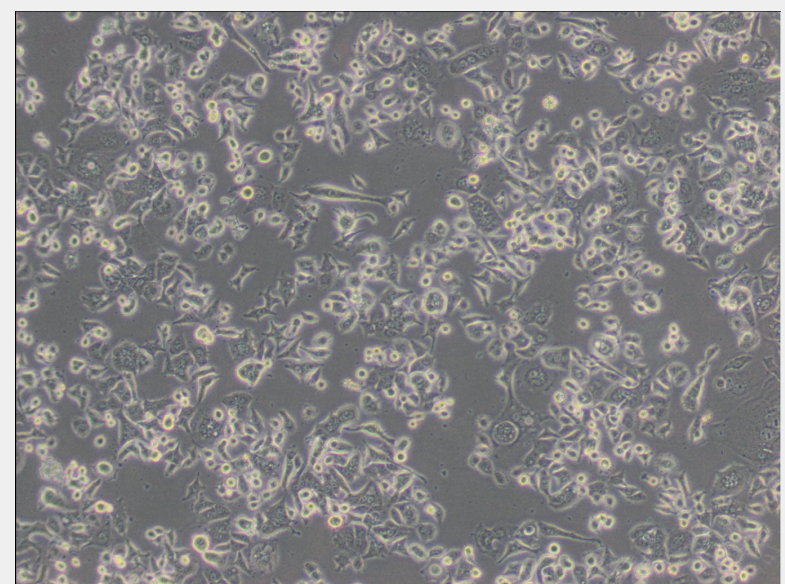
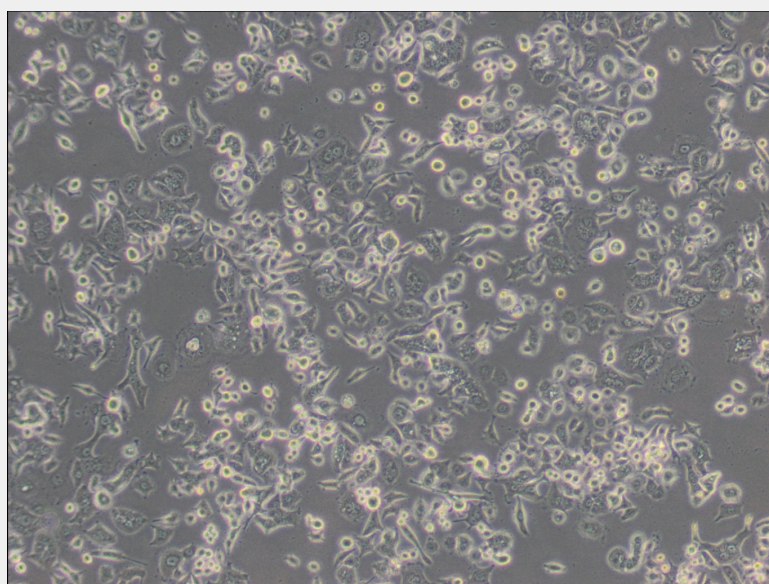
### Subculturing:

Remove and discard culture medium. Briefly rinse the cell layer with DPBS solution to remove all traces of serum that contains trypsin inhibitor. Add 1.0 to 2.0 mL of Trypsin-EDTA solution to flask and observe cells under an inverted microscope until cell layer is dispersed (usually within 2 to 3 minutes). Cells that are difficult to detach may be placed at 37°C to facilitate dispersal. Add 4.0 to 6.0 mL of complete growth medium and aspirate cells by gently pipetting. Add appropriate aliquots of the cell suspension to new culture vessels.

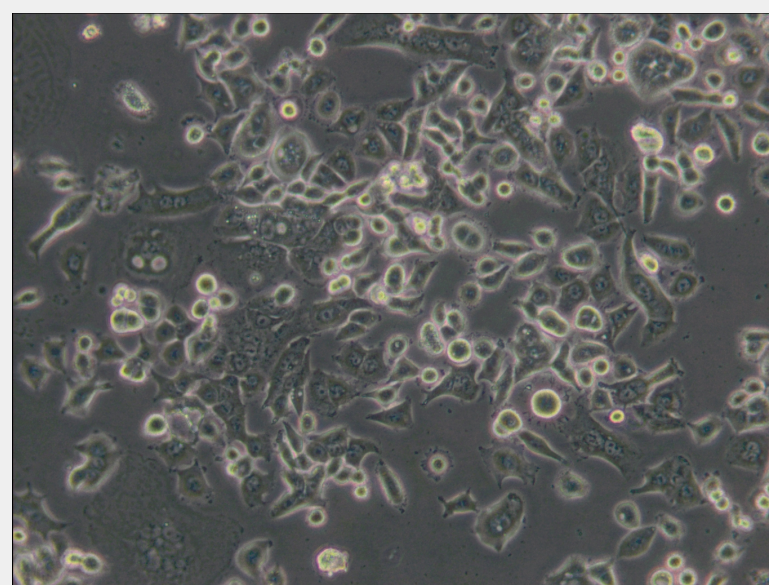
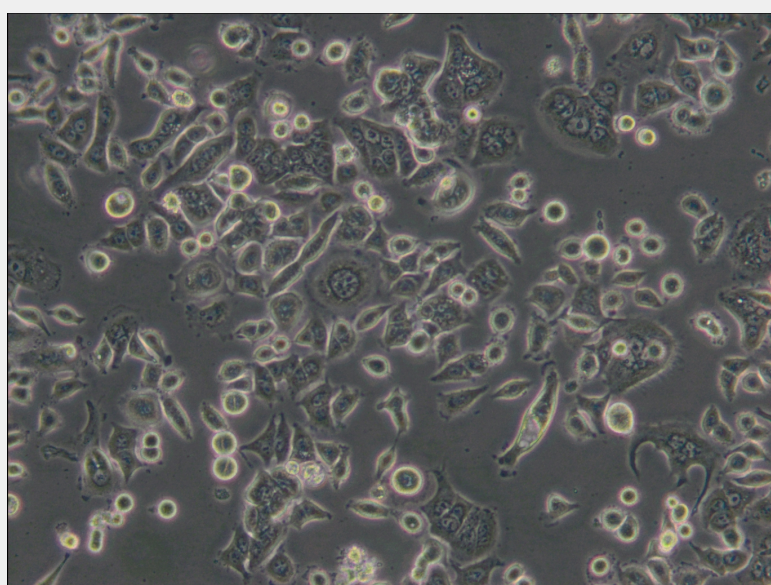
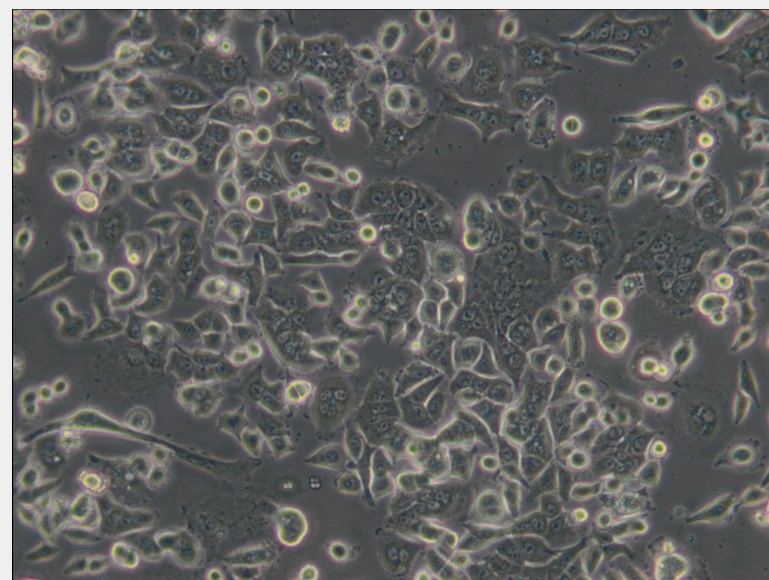
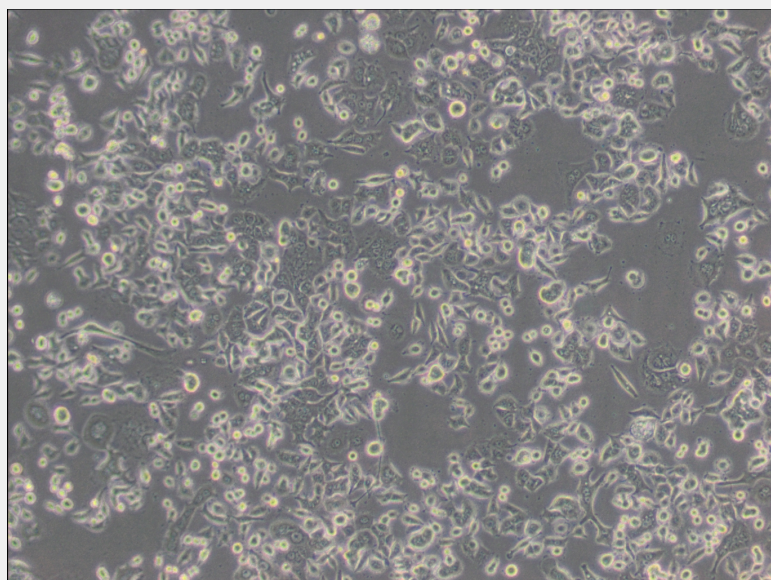
---

## Product Description

The line was derived from nude mouse xenografts initiated with cells from the ascites of a patient with cancer of the pancreas.







All products are for RESEARCH USE ONLY. Not for diagnostic & therapeutic purposes!