

Ana-1

Catalog No: tcel23



Available Sizes

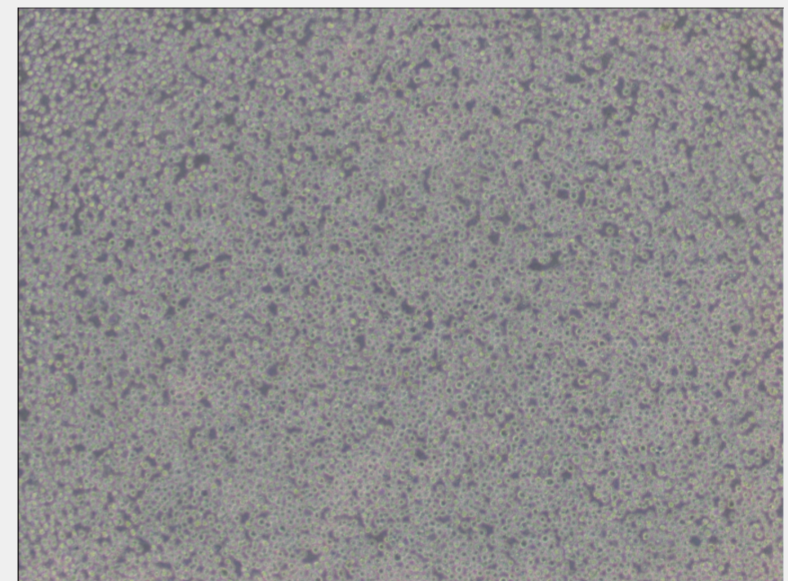
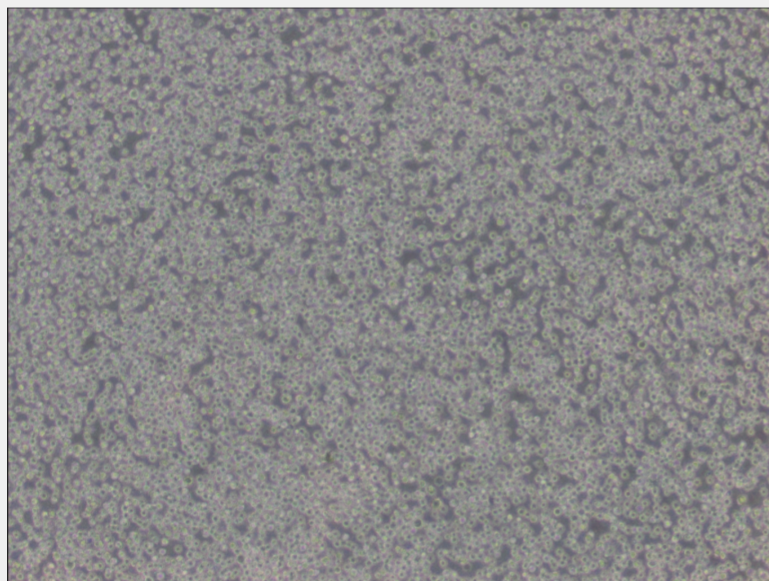
Size: 1×10⁶cells/t25culturebottle

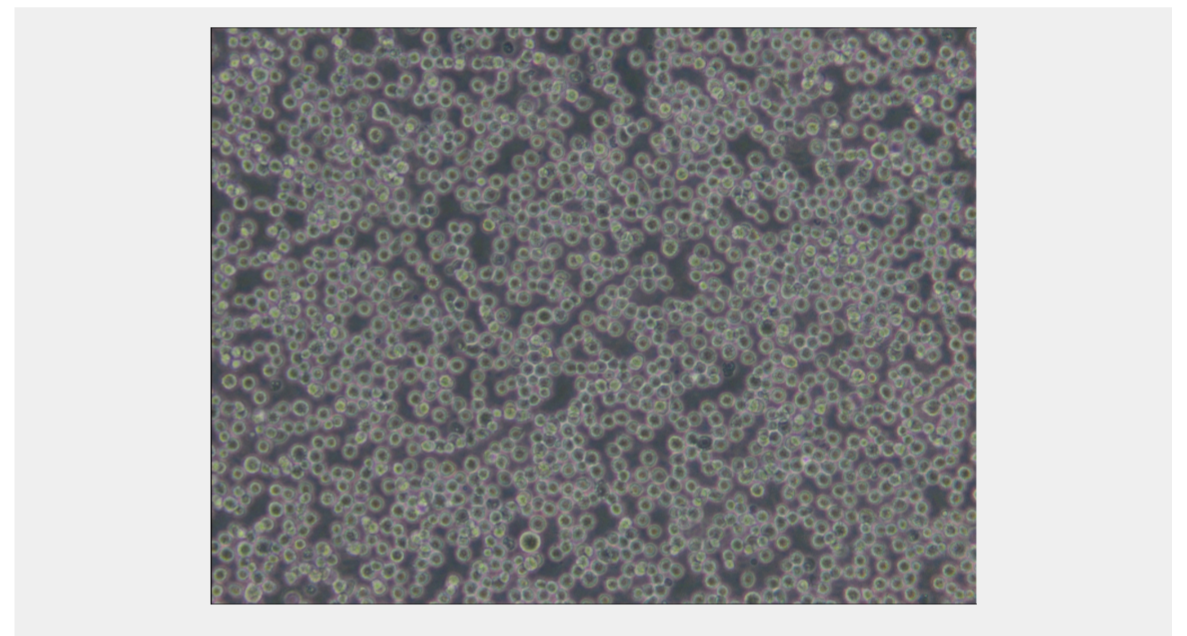
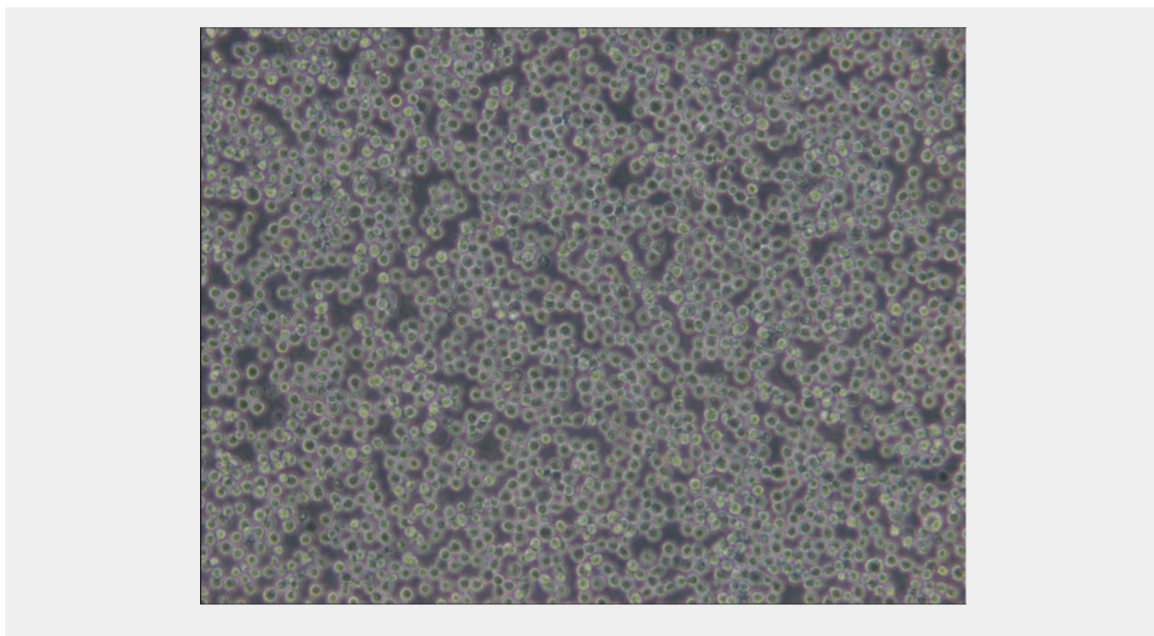
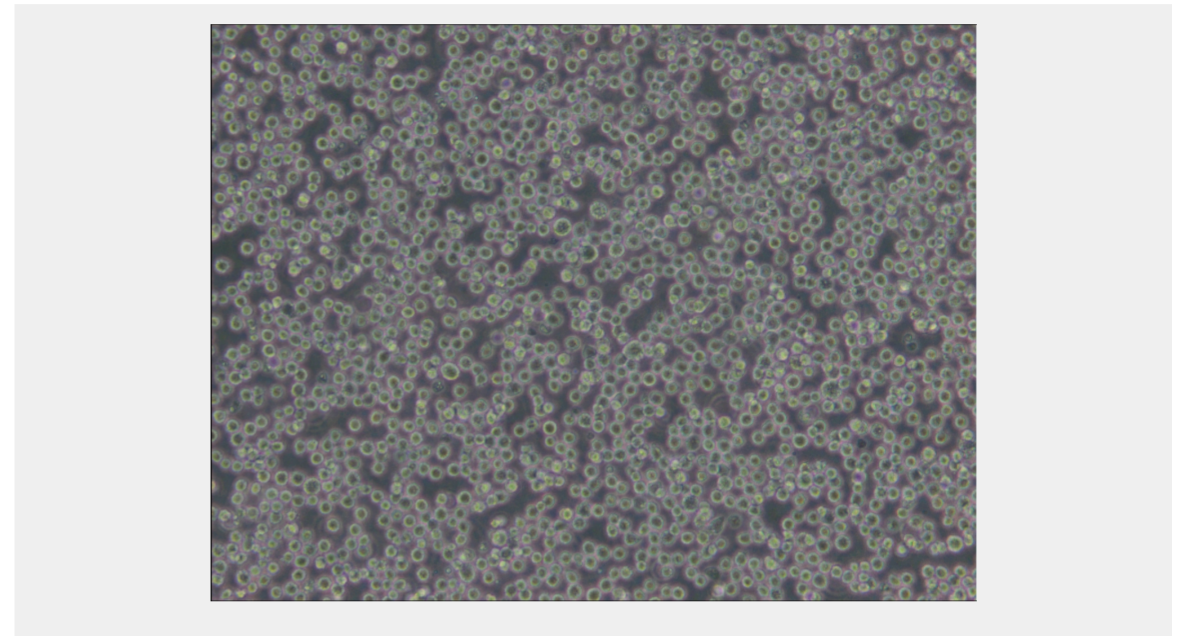
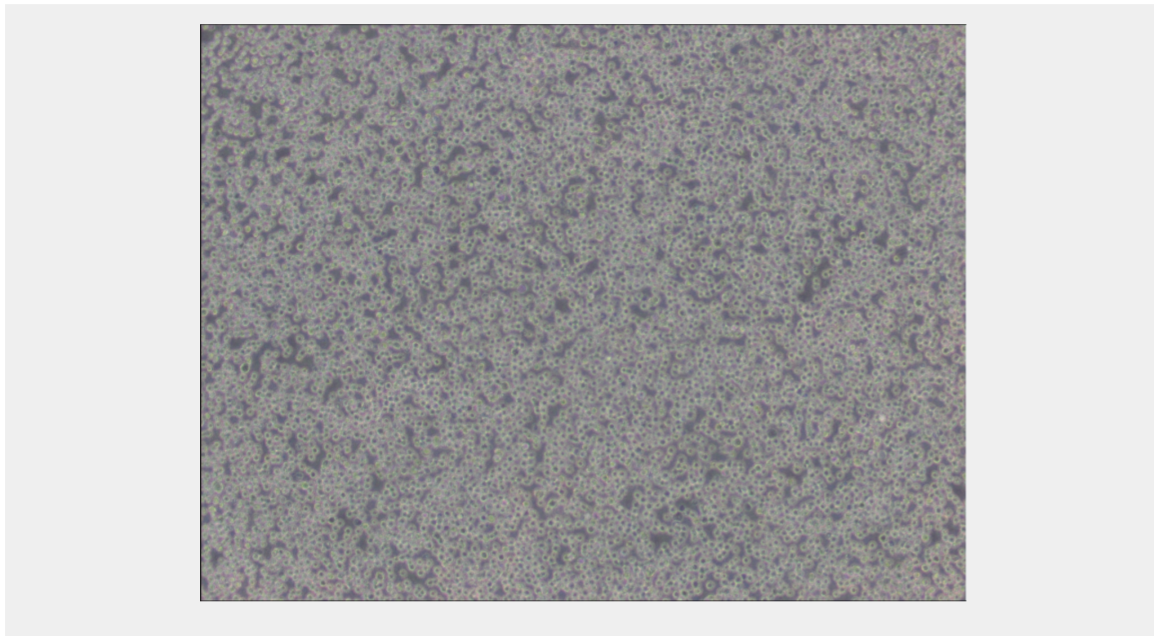


Specifications

Subculturing:

Remove and discard culture medium. These cells grow as a mixture of floating and adherent cells. Sometimes many cells are floating, they can be harvested by centrifugation of medium instead of discarding it. Add 1.0 to 2.0 mL of 0.25% (w/v) Trypsin-0.53mM EDTA solution to flask and observe cells under an inverted microscope until cell layer is dispersed (usually within 2 to 3 minutes). Add 4.0 to 6.0 mL of complete growth medium and aspirate cells by gently pipetting. Add appropriate aliquots of the cell suspension to new culture vessels. Incubate cultures at 37°C.





All products are for RESEARCH USE ONLY. Not for diagnostic & therapeutic purposes!