

786-O [786-0]

Catalog No: tcel10



Available Sizes

Size: 1×10⁶cells/t25culturebottle



Specifications

Application:

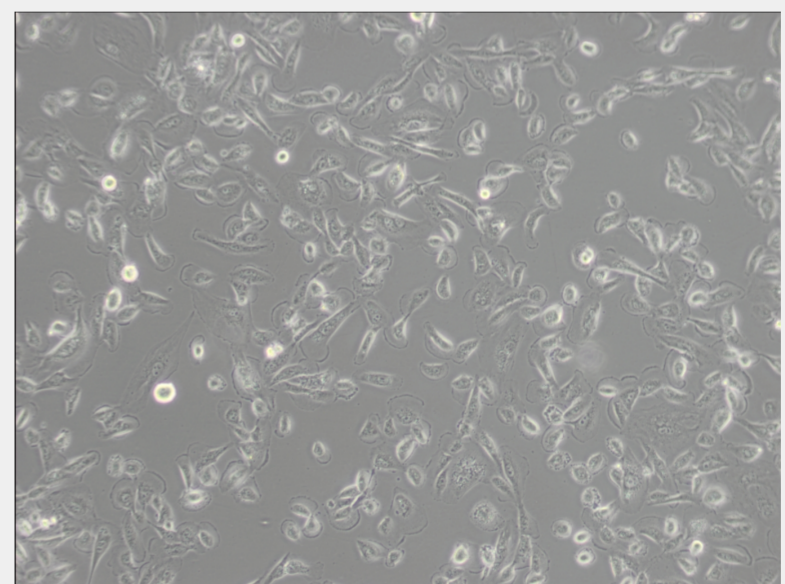
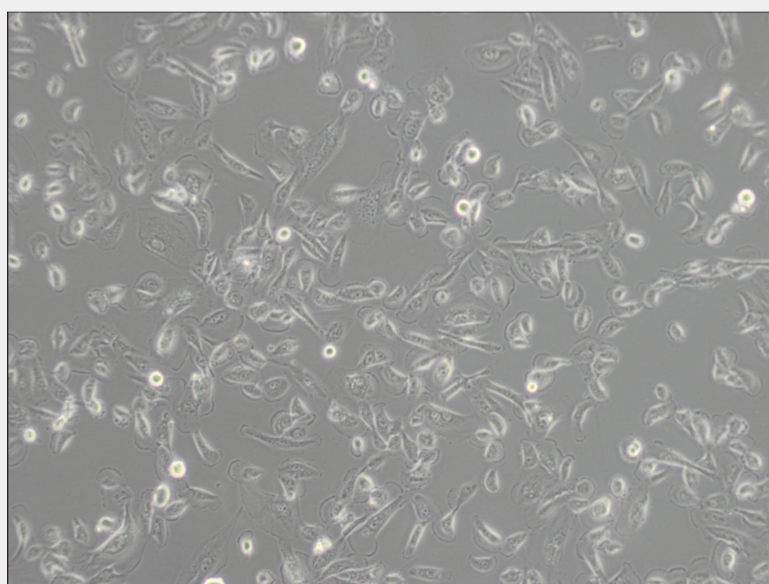
transfection host

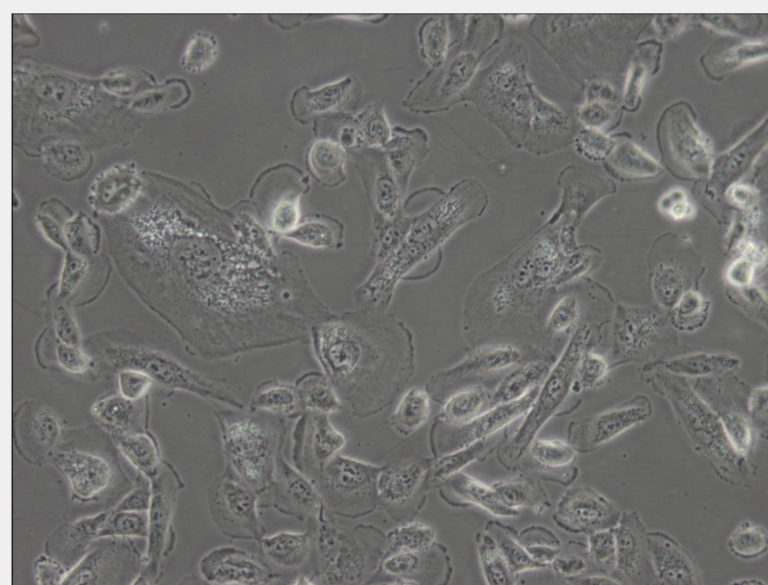
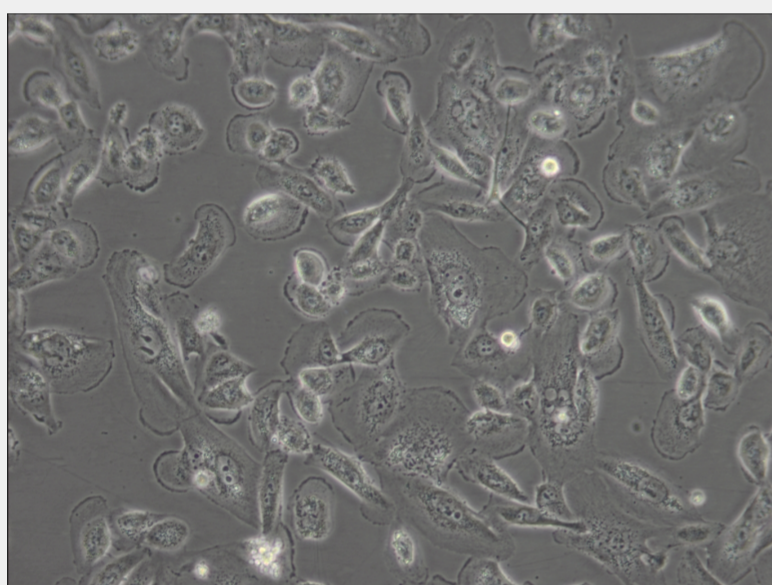
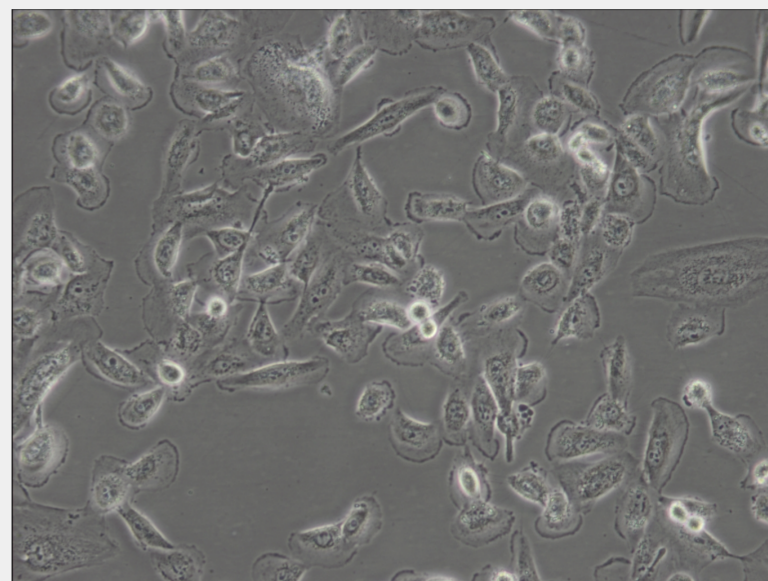
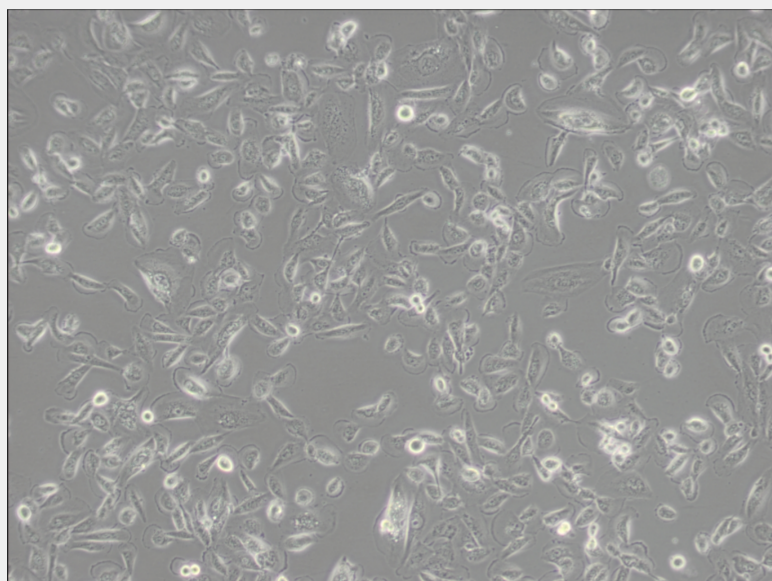
Subculturing:

Remove and discard culture medium. Briefly rinse the cell layer with DPBS solution to remove all traces of serum that contains trypsin inhibitor. Add 1.0 to 2.0 mL of Trypsin-EDTA solution to flask and observe cells under an inverted microscope until cell layer is dispersed (usually within 2 to 3 minutes). Cells that are difficult to detach may be placed at 37°C to facilitate dispersal. Add 4.0 to 6.0 mL of complete growth medium and aspirate cells by gently pipetting. Add appropriate aliquots of the cell suspension to new culture vessels.

Product Description

The cells display both microvilli and desmosomes, and can be grown in soft agar.(PubMed: 2835539)The cells produce a PTH like peptides that is identical to peptides produced by breast and lung tumors.The peptide has an N terminal sequence similar to PTH, has PTH like activity, and has a molecular weight of 6000 daltons.





All products are for RESEARCH USE ONLY. Not for diagnostic & therapeutic purposes!