

6T-CEM

Catalog No: tcel8



Available Sizes

Size: 1×10^6 cells/t25 culture bottle



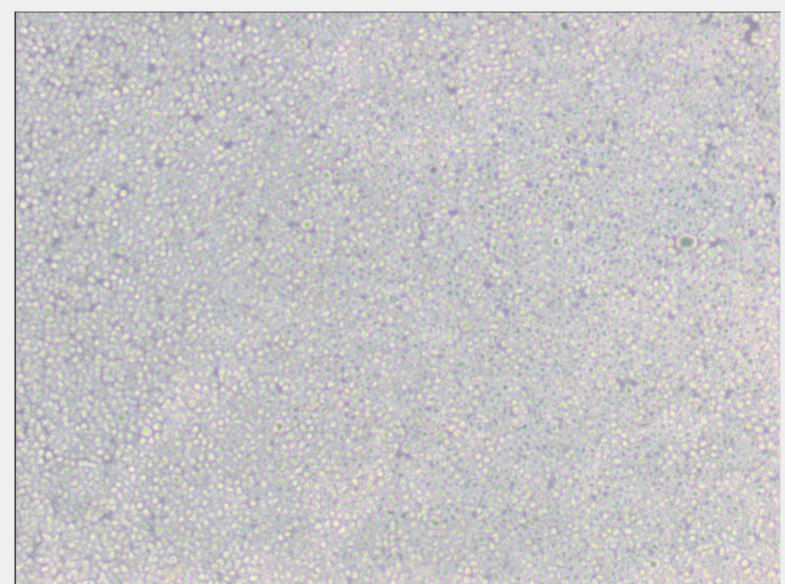
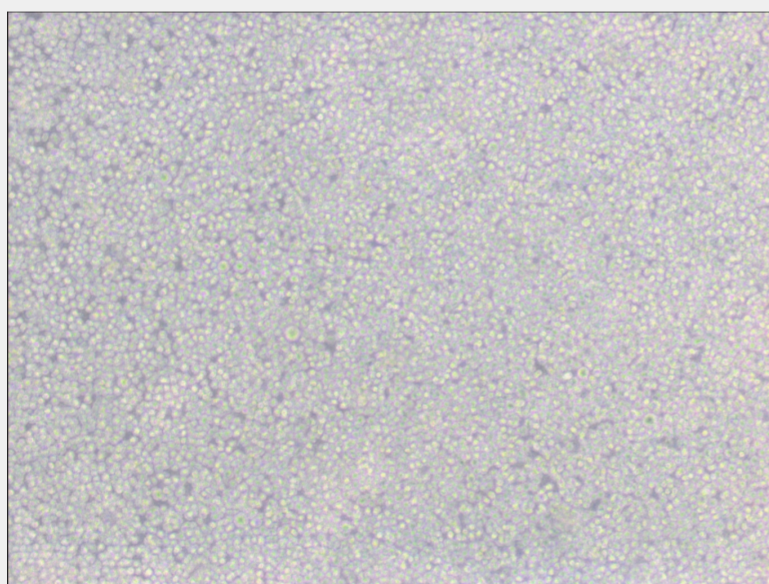
Specifications

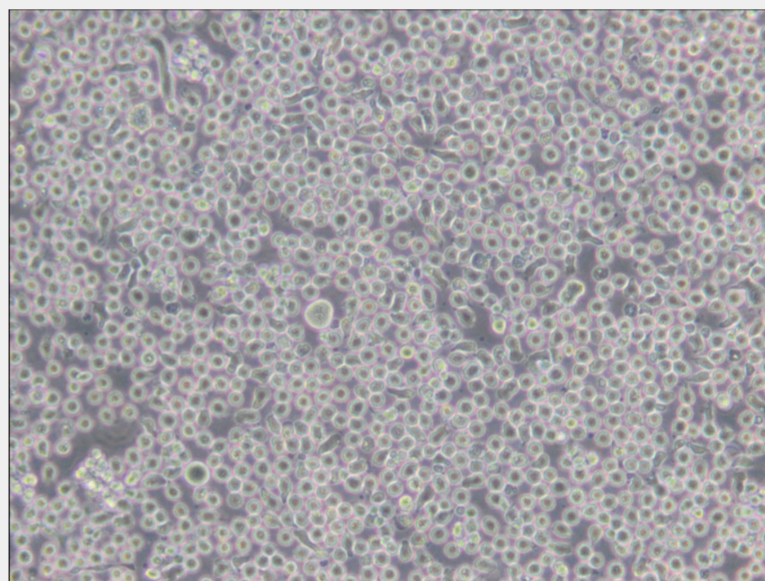
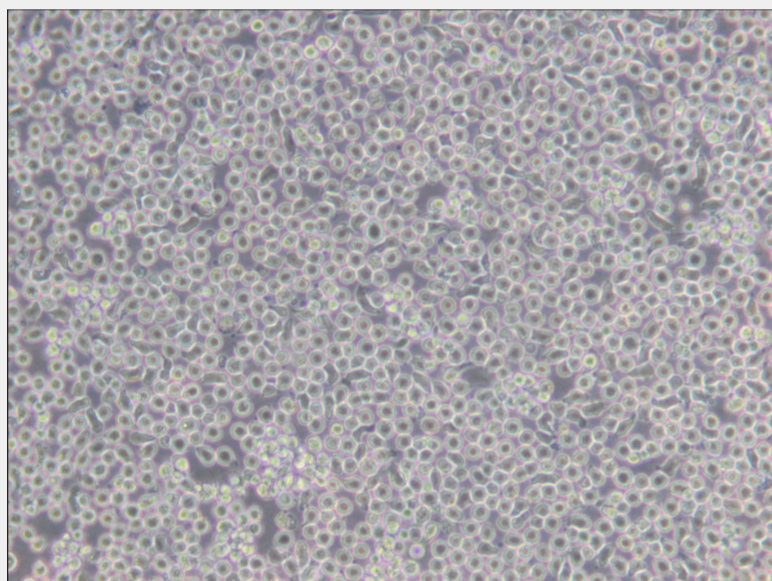
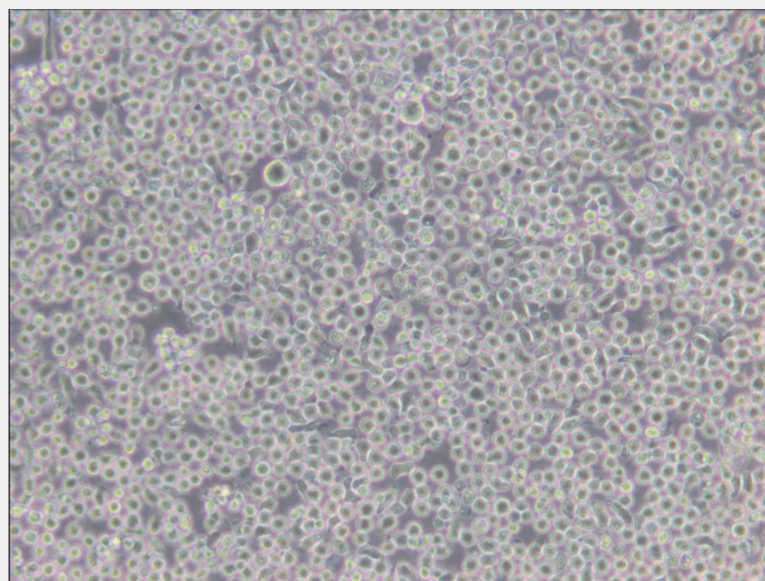
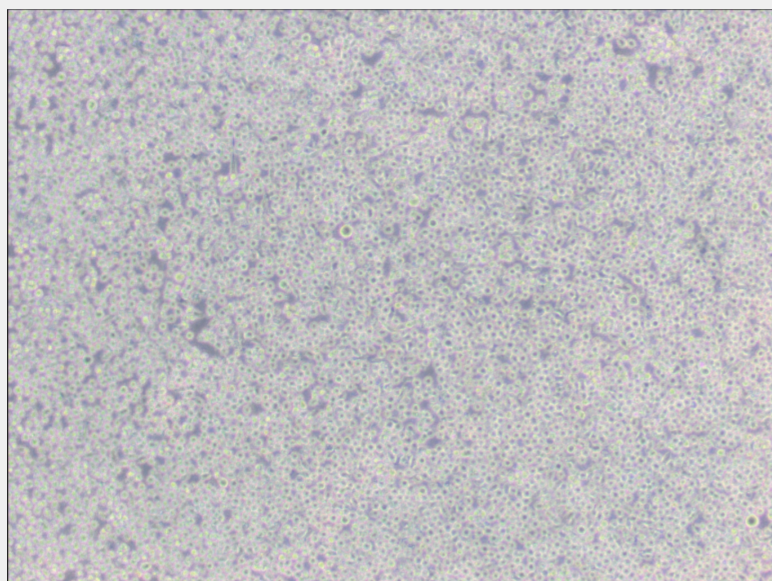
Subculturing:

Cultures can be maintained by the addition of fresh medium or replacement of medium. Alternatively, cultures can be established by centrifugation with subsequent resuspension at the subcultivation ratio of 1:2-1:4.

Product Description

This is a 6-thioguanine resistant variant of CCRF-CEM. It is deficient in Hypoxanthine phosphoribosyl transferase (HPRT, HGPRT) and secretes high titers of an immunosuppressive factor. This line may be used as a fusion partner for making human T cell hybridomas. suspension immunosuppressive factor. Cultures can be maintained by addition or replacement of fresh medium. Start cultures at 2×10^5 cells/ml and maintain between 1×10^5 and 1×10^6 cells/ml. Handle as potentially biohazardous material under at least Biosafety Level 2 containment.





All products are for RESEARCH USE ONLY. Not for diagnostic & therapeutic purposes!