

22RV1

Catalog No: tcel4



Available Sizes

Size: 1×10⁶cells/t25culturebottle



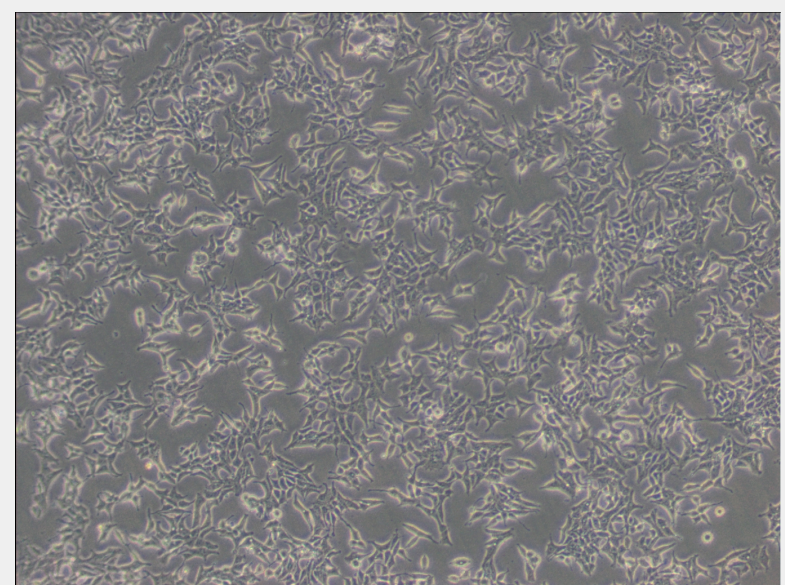
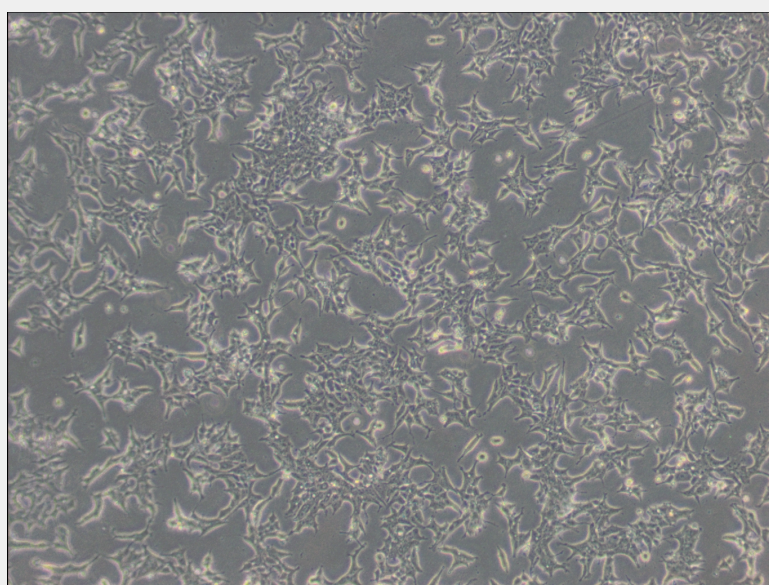
Specifications

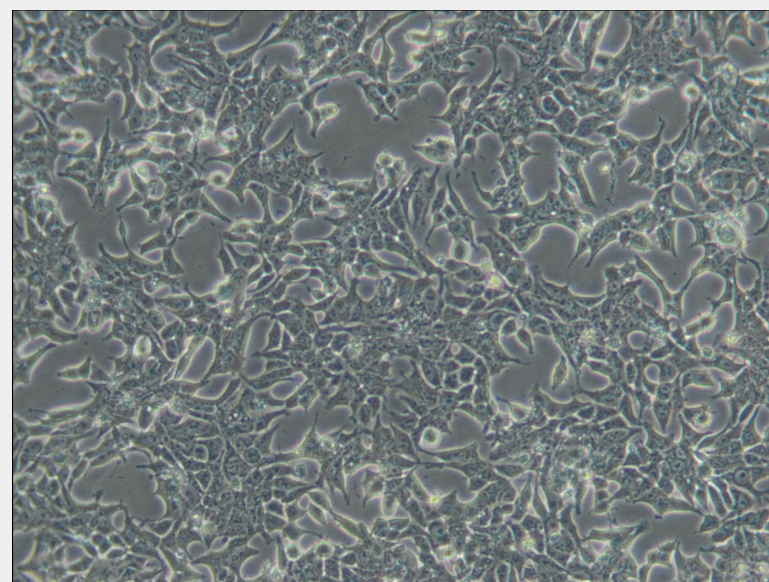
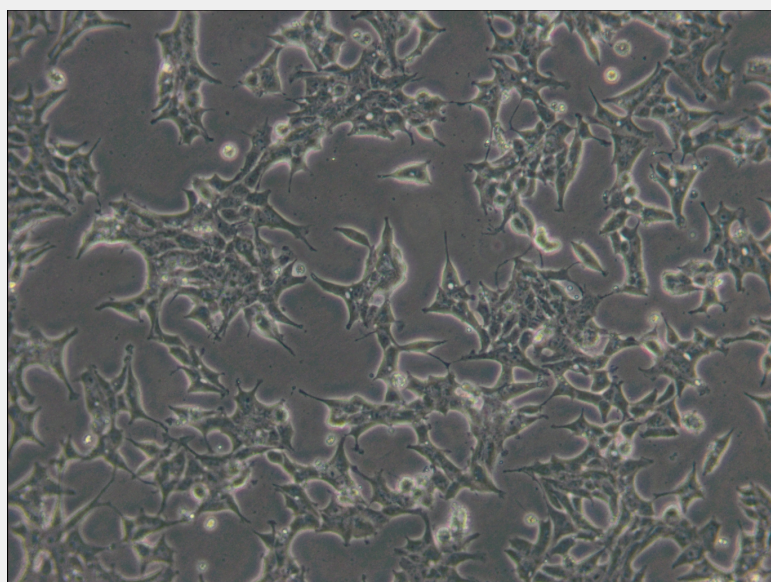
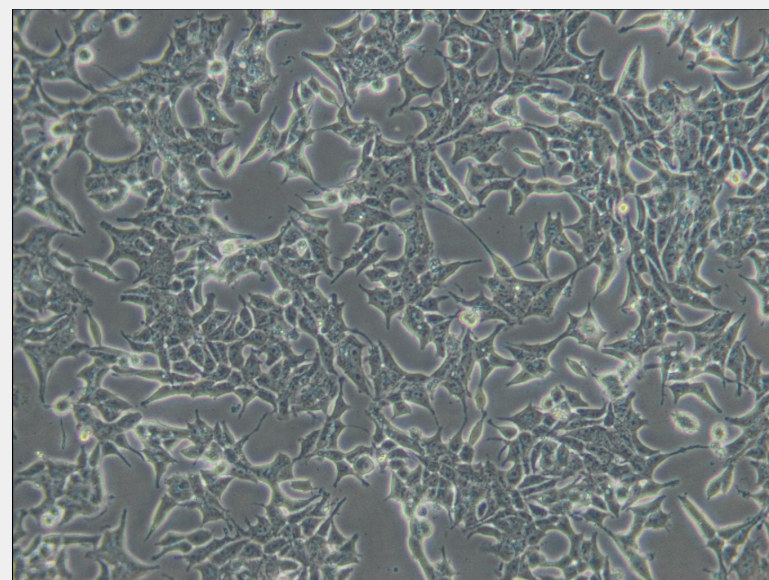
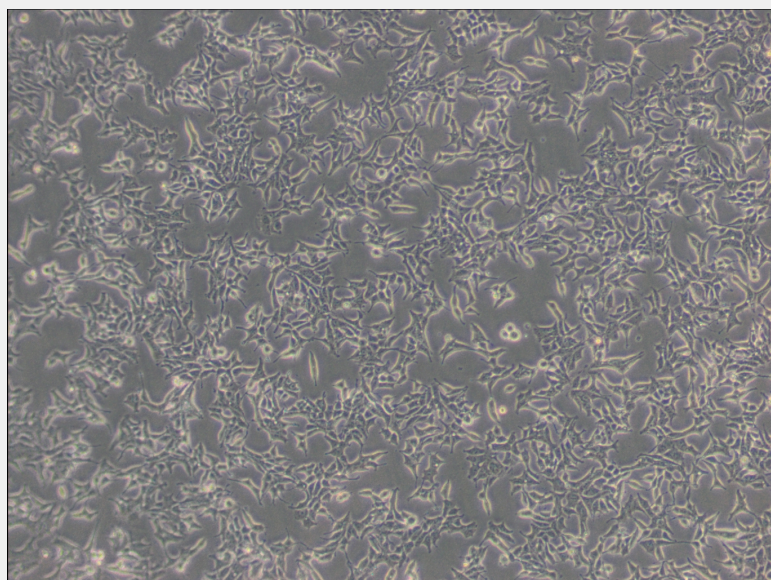
Subculturing:

Remove and discard culture medium. Briefly rinse the cell layer with DPBS solution to remove all traces of serum that contains trypsin inhibitor. Add 1.0 to 2.0 mL of Trypsin-EDTA solution to flask and observe cells under an inverted microscope until cell layer is dispersed (usually within 2 to 3 minutes). Cells that are difficult to detach may be placed at 37°C to facilitate dispersal. Add 4.0 to 6.0 mL of complete growth medium and aspirate cells by gently pipetting. Add appropriate aliquots of the cell suspension to new culture vessels.

Product Description

The cell line expresses prostate specific antigen(PSA). Growth is weakly stimulated by dihydroxytestosterone and lysates are immunoreactive with androgen receptor antibody by Western blot analysis. Growth is stimulated by epidermal growth factor(EGF) but is not inhibited by transforming growth factor beta-1(TGF beta- 1). Recently , it has been shown that 22Rv1 prostate carcinoma cells produce high-titer of the human retrovirus XMRV(xenotropic murine leukemia virus-related virus).





All products are for RESEARCH USE ONLY. Not for diagnostic & therapeutic purposes!