

Alexa Fluor 488-conjugated AffiniPure Goat Anti-Rabbit IgG (H+L)

Catalog No: tcba13739



Available Sizes

Size: 100µl



Specifications

Host Species:

Goat

Immunogen / Amino acids:

Rabbit IgG

Conjugation:

Alexa Fluor 488

Isotype:

IgG

Storage Buffer:

Store at -20°C. Avoid freeze / thaw cycles. Buffer: PBS with 0.02% sodium azide, 50% glycerol, pH7.3.

Recommended Dilution:

Immunofluorescence 1:100 - 1:800 Flow Cytometry 1:100 - 1:800

Tested Application:

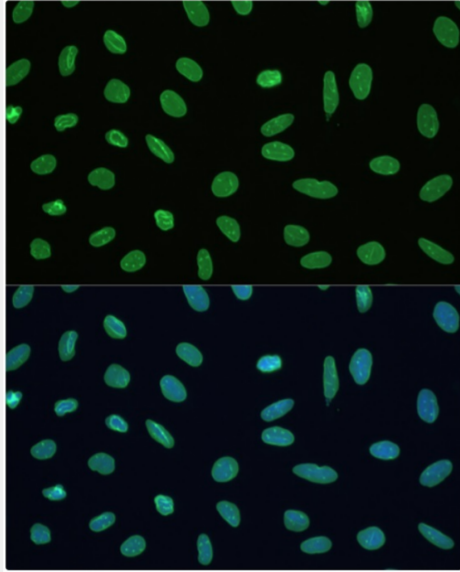
Immunofluorescence Flow Cytometry

Purification:

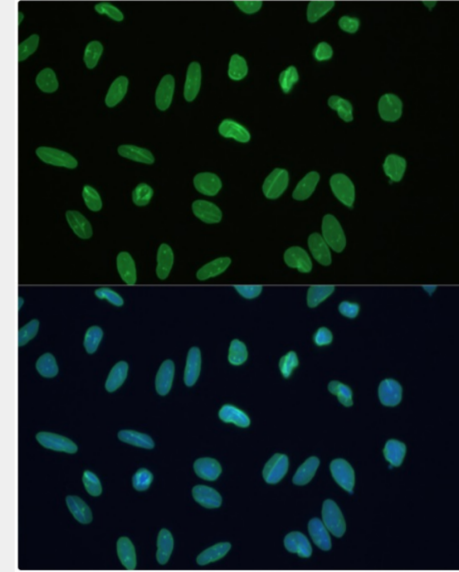
Affinity purification

Product Description

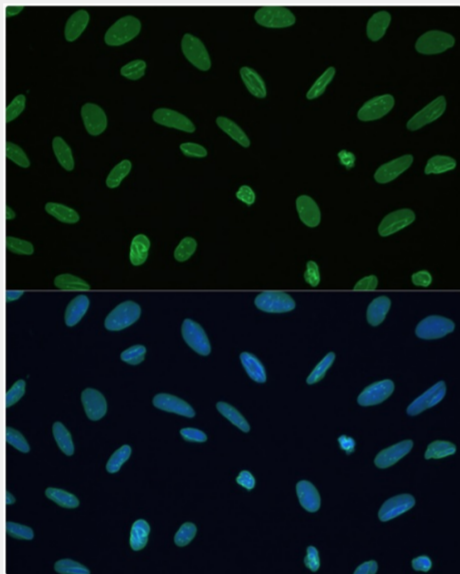
Alexa Fluor 488-conjugated AffiniPure Goat Anti-Rabbit IgG (H+L)



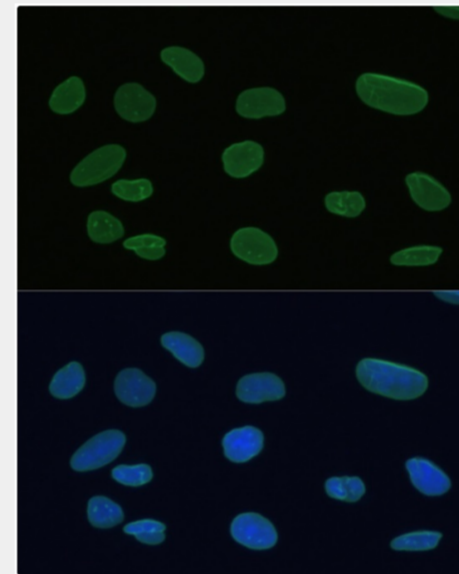
Immunofluorescence analysis of U-2 OS cells, using LMNB1 antibody as the primary antibody at dilution of 1:100. The cells were incubated with the primary antibody overnight at 4°C. Secondary antibody: Alexa Fluor 488-conjugated AffiniPure Goat Anti-RabbitIgG(H+L) (tcba13739) at 1:100 dilution. Blue: DAPI for nuclear staining.



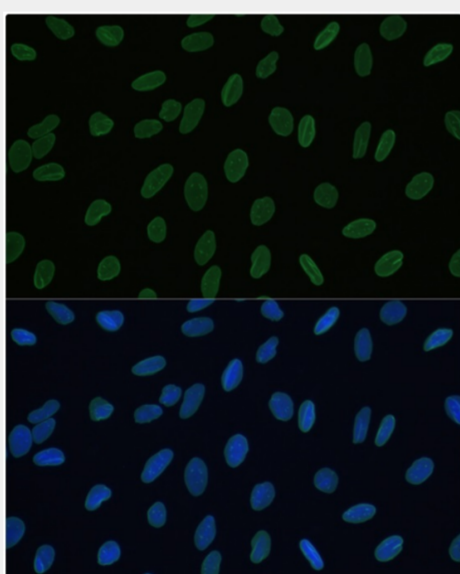
Immunofluorescence analysis of U-2 OS cells, using LMNB1 antibody as the primary antibody at dilution of 1:100. The cells were incubated with the primary antibody overnight at 4°C. Secondary antibody: Alexa Fluor 488-conjugated AffiniPure Goat Anti-RabbitIgG(H+L) (tcba13739) at 1:200 dilution. Blue: DAPI for nuclear staining.



Immunofluorescence analysis of U-2 OS cells, using LMNB1 antibody as the primary antibody at dilution of 1:100. The cells were incubated with the primary antibody overnight at 4°C. Secondary antibody: Alexa Fluor 488-conjugated AffiniPure Goat Anti-RabbitIgG(H+L) (tcba13739) at 1:400 dilution. Blue: DAPI for nuclear staining.



Immunofluorescence analysis of U-2 OS cells, using LMNB1 antibody as the primary antibody at dilution of 1:100. The cells were incubated with the primary antibody overnight at 4°C. Secondary antibody: Alexa Fluor 488-conjugated AffiniPure Goat Anti-RabbitIgG(H+L) (tcba13739) at 1:800 dilution. Blue: DAPI for nuclear staining.



Immunofluorescence analysis of U-2 OS cells, using LMNB1 antibody as the primary antibody at dilution of 1:100. The cells were incubated with the primary antibody overnight at 4°C. Secondary antibody: Alexa Fluor 488-conjugated AffiniPure Goat Anti-RabbitIgG(H+L) (tcba13739) at 1:1000 dilution. Blue: DAPI for nuclear staining.

All products are for RESEARCH USE ONLY. Not for diagnostic & therapeutic purposes!

Alexa Fluor is a registered trademark of Life Technologies Corporation