

Human IgE (SUS-11) Full Range

Catalog No: tcnbp113



Available Sizes

Size: 50 µg

Size: 100 µg

Size: 500 µg

Size: 1000 µg



Specifications

Application:

ELISA, FACS Western blot, functional cellular assays (mast cell / basophil activation).

Species Reactivity:

Specific allergen unknown.

Clones:

SUS11-NBS01

Isotype:

Human IgE

Storage Buffer:

Phosphate buffered saline (PBS); pH = 7.2; sterile filtered

Concentration:

1mg/ml

Source:

Human B cells hybridoma from healthy donors (CD40 cell culture system)

Purity / Grade:

> 95%, tested by analytical Gel Permeation Chromatography

Storage Instruction:

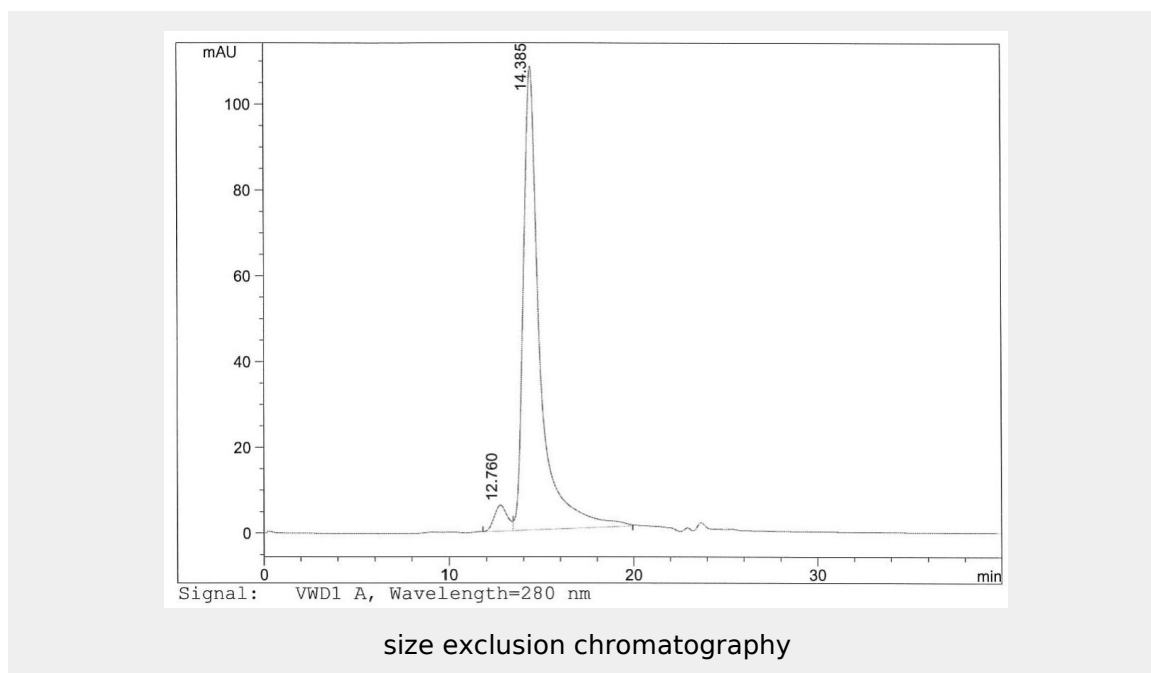
Store undiluted at 4°C. For long term storage, aliquot and store at -20°C or -80°C. Avoid repeated freeze-thawing. Handle under sterile conditions, the mAb is formulated in sterile buffer solution and does not contain sodium azide as preservative. The product may be shipped on ice pack or dry ice.

Purification:

Affinity - purified from cell culture supernatant by Immunoaffinity Chromatography on CH-Sepharose 4B - mouse anti-human IgE mAb

Product Description

Recombinant human IgE to be used as reference for IgE concentration measurements in biological samples (ELISA; FACS). IgE (SUS-11) recognizes the human high affinity IgE receptor (Fc ϵ RI), the human low affinity IgE receptor (CD23) and does not interact with the corresponding IgE receptors of other species. It can be used as functional reagent in mast cell / basophil cellular assays, e.g. for controlled sensitization of such cells and subsequent cross-linking with either anti-human IgE mAbs like mAb LE27 or a specific recombinant cross-linking agent.



	RetTime [min]	Width	Area [mAU*s]	Area %	Height [mAU]	Plates	Resolution
Peak	12.760	0.834	304.4	4.358	6.079	1373	
Peak	14.385	1.030	6679.2	95.642	108.047	1877	1.2
Total:			6983.6				

Target: rec. human high affinity IgE receptor;. (Surface Plasmon Resonance; Biacore™):

All products are for RESEARCH USE ONLY. Not for diagnostic & therapeutic purposes!