

GLO1 Antibody / Glyoxalase I

Catalog No: tcna10436



Available Sizes

Size: 100ug



Specifications

Application:

WB, IHC-P, ELISA

Species Reactivity:

Human, Mouse, Rat

Host Species:

Rabbit

Immunogen / Amino acids:

A recombinant human protein corresponding to amino acids A2-M184 was used as the immunogen for the GLO1 antibody.

Conjugation:

Antigen affinity purified

Clonality:

Polyclonal

Isotype:

Rabbit IgG

Form:

Lyophilized powder

Storage Buffer:

Lyophilized from 1X PBS with 2% Trehalose and 0.025% sodium azide

Recommended Dilution:

Western Blot: 0.5-1ug/ml

IHC (FFPE): 1-2ug/ml

Direct ELISA: 0.1-0.5ug/ml Optimal dilution of the GLO1 antibody should be determined by the researcher.

Storage Instruction:

After reconstitution, the GLO1 antibody can be stored for up to one month at 4oC. For long-term, aliquot and store at -20oC. Avoid repeated freezing and thawing.

SwissProt:

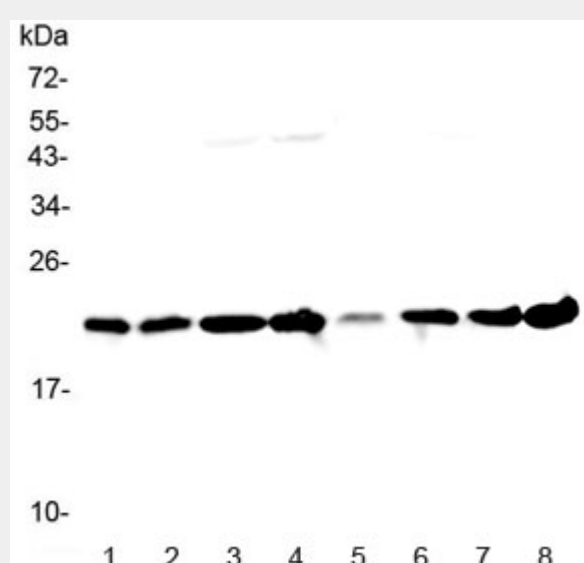
Q04760

References

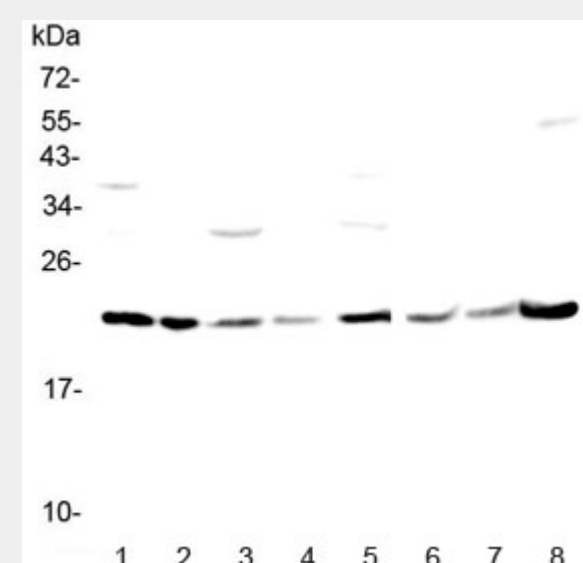
Antigen affinity purified

Product Description

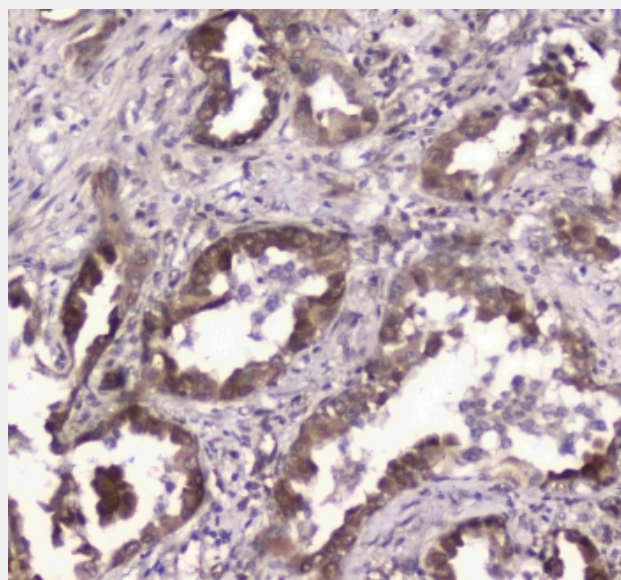
Lactoylglutathione lyase in humans is encoded by the GLO1 gene. The enzyme encoded by this gene is responsible for the catalysis and formation of S-lactoyl-glutathione from methylglyoxal condensation and reduced glutathione. Glyoxalase I is linked to HLA and is localized to 6p21.3-p21.1, between HLA and the centromere.



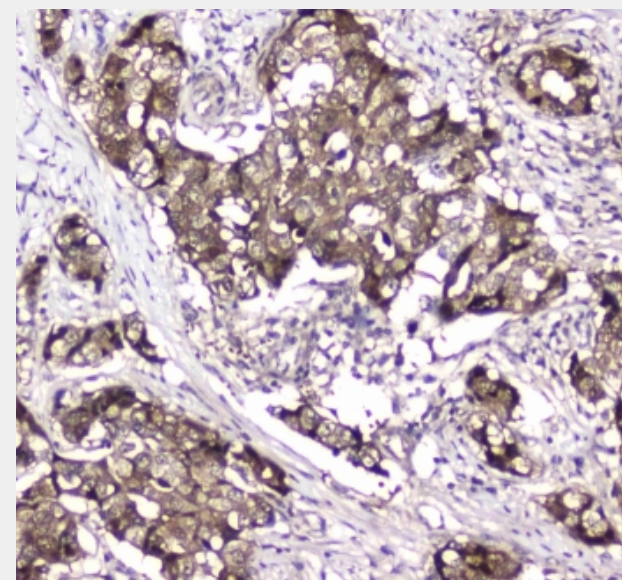
Western blot testing of human 1) HeLa, 2) placenta, 3) MCF7, 4) COLO320, 5) 22RV1, 6) HepG2, 7) A431 and 8) U937 lysate with GLO1 antibody at 0.5ug/ml.
Predicted molecular weight ~21 kDa.



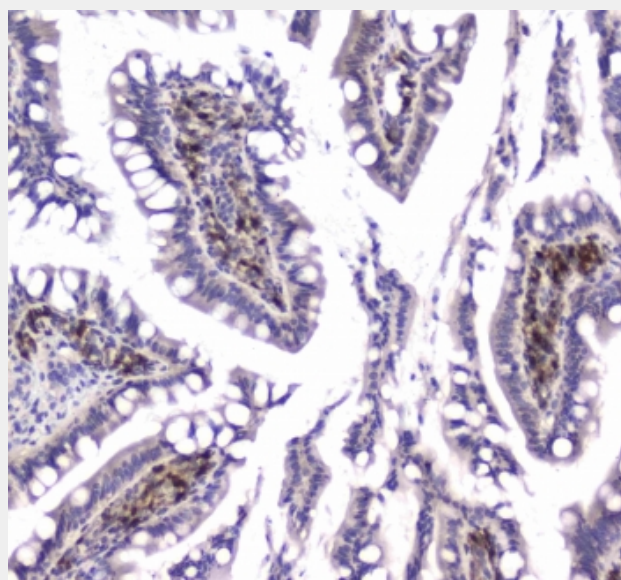
Western blot testing of rat 1) brain, 2) testis, 3) spleen, 4) thymus and mouse 5) brain, 6) testis, 7) thymus and 8) liver lysate with GLO1 antibody at 0.5ug/ml.
Predicted molecular weight ~21 kDa.



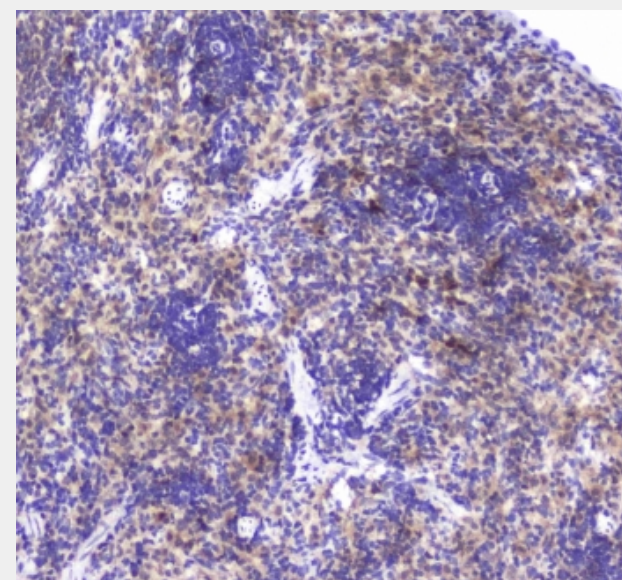
IHC testing of FFPE human lung cancer tissue with GLO1 antibody at 1ug/ml.
Required HIER: steam section in pH6 citrate buffer for 20 min and allow to cool prior to staining.



IHC testing of FFPE human breast cancer tissue with GLO1 antibody at 1ug/ml.
Required HIER: steam section in pH6 citrate buffer for 20 min and allow to cool prior to staining.



IHC testing of FFPE rat small intestine tissue with GLO1 antibody at 1ug/ml.
Required HIER: steam section in pH6 citrate buffer for 20 min and allow to cool prior to staining.



IHC testing of FFPE rat spleen tissue with GLO1 antibody at 1ug/ml. Required HIER:
steam section in pH6 citrate buffer for 20 min and allow to cool prior to staining.

All products are for RESEARCH USE ONLY. Not for diagnostic & therapeutic purposes!