

HER2 Antibody

Catalog No: tcna9203



Available Sizes

Size: 100ug



Specifications

Application:

IHC, ELISA (peptide)

Species Reactivity:

Human

Host Species:

Goat

Immunogen / Amino acids:

Amino acids PREYVNARHCLP were used as the immunogen for this HER2 antibody. The amino acid sequence used as immunogen is from the extracellular portion of the protein.

Conjugation:

Antigen affinity purified

Clonality:

Polyclonal

Isotype:

Goat Ig

Form:

Liquid

Storage Buffer:

0.5 mg/ml in 1X TBS, pH7.3, with 0.5% BSA (US sourced) and 0.02% sodium azide

Recommended Dilution:

Immunohistochemistry (FFPE): 4-6ug/ml

ELISA (peptide) LOD: 1:128000Optimal dilution of the HER2 antibody should be determined by the researcher.

Storage Instruction:

Aliquot and store the HER2 antibody at -20oC.

Gene ID:

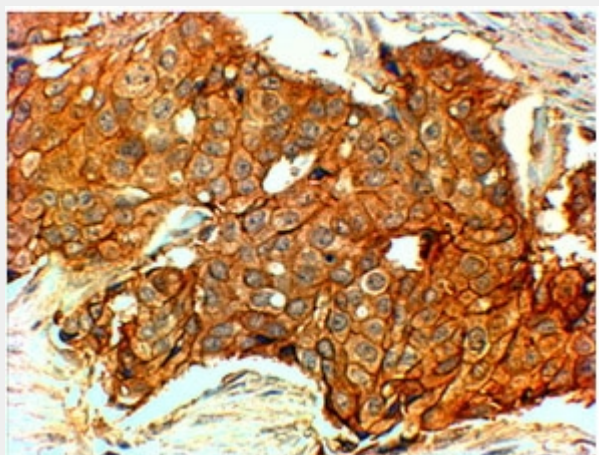
2064 (human);

References

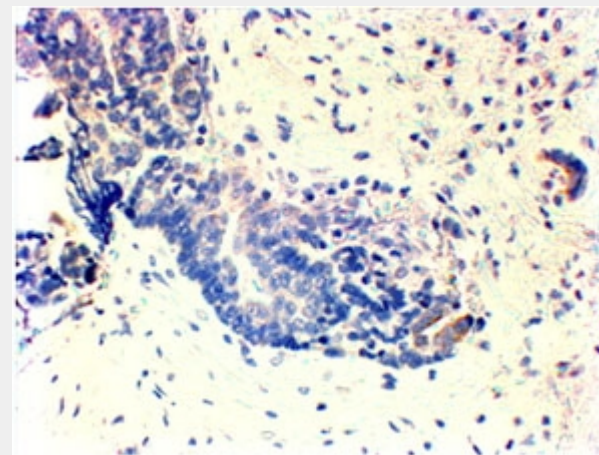
Antigen affinity purified

Product Description

Additional name(s) for this target protein: ERBB2, v-erb-b2 erythroblastic leukemia viral oncogene homolog 2, CD340; ERBB2



IHC staining of HER+ FFPE human breast cancer with HER2 antibody at 4ug/ml.
HIER: Steamed with pH6 citrate buffer, HRP-staining.



IHC: No staining of FFPE human breast cancer (triple negative/TNBC) seen with
HER2 antibody at 4ug/ml. HIER: Steamed with pH6 citrate buffer, HRP-staining.

All products are for RESEARCH USE ONLY. Not for diagnostic & therapeutic purposes!