

# Dcx Antibody

## Catalog No: tcna9126



### Available Sizes

**Size:** 100ug



### Specifications

**Application:**

WB, IF/ICC, ELISA (peptide)

**Species Reactivity:**

Human, Mouse

**Host Species:**

Goat

**Immunogen / Amino acids:**

Amino acids PKASPTPQKTSAKS were used as the immunogen for this Dcx antibody.

**Conjugation:**

Antigen affinity purified

**Clonality:**

Polyclonal

**Isotype:**

Goat Ig

**Form:**

Liquid

**Storage Buffer:**

0.5 mg/ml in 1X TBS, pH7.3, with 0.5% BSA (US sourced) and 0.02% sodium azide

**Recommended Dilution:**

Western blot: 0.5-2ug/ml

IF/ICC: 5ug/ml

ELISA (peptide) LOD: 1:128000Optimal dilution of the Dcx antibody should be determined by the researcher.

### Storage Instruction:

Aliquot and store the Dcx antibody at -20oC.

### Gene ID:

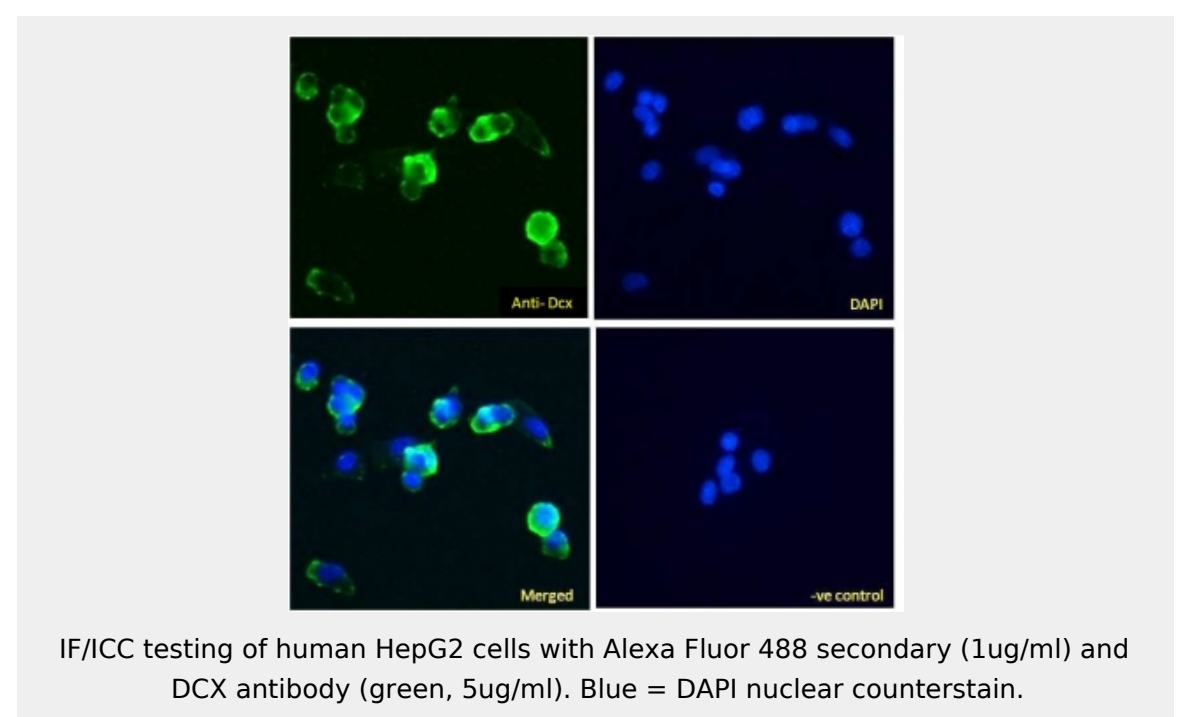
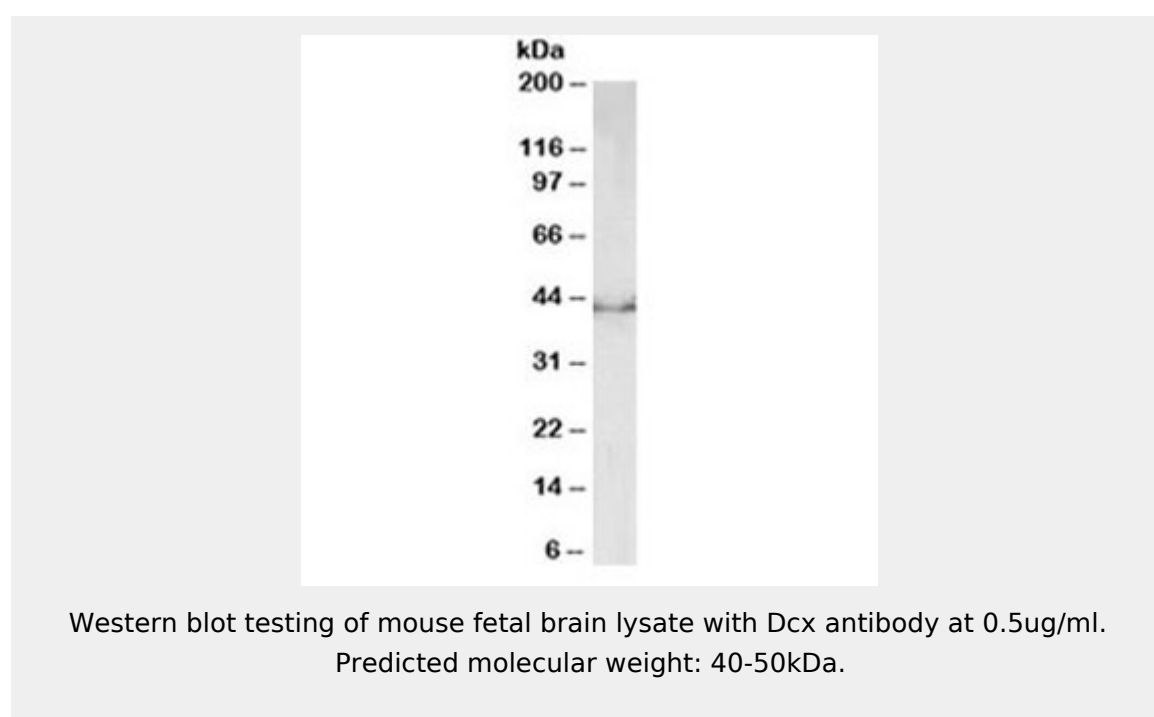
1641 (human);

### References

Antigen affinity purified

### Product Description

Additional name(s) for this target protein: Neuronal migration protein Doublecortin, Dbct



All products are for RESEARCH USE ONLY. Not for diagnostic & therapeutic purposes!