

# GADD34 Antibody

Catalog No: tcna7651



## Available Sizes

**Size:** 100ug



## Specifications

**Application:**

WB, IHC, ICC/IF, FACS, ELISA (peptide)

**Species Reactivity:**

Human

**Host Species:**

Goat

**Immunogen / Amino acids:**

Amino acids AAALDLSGRRG were used as the immunogen for this GADD34 antibody.

**Conjugation:**

Antigen affinity purified

**Clonality:**

Polyclonal

**Isotype:**

Goat Ig

**Form:**

Liquid

**Storage Buffer:**

0.5 mg/ml in 1X TBS, pH7.3, with 0.5% BSA (US sourced) and 0.02% sodium azide

**Recommended Dilution:**

Western blot: 0.1-0.3ug/ml

Immunohistochemistry (FFPE): 2-4ug/ml

ICC/IF: 10ug/ml

FACS: 10ug/10<sup>6</sup> cells

ELISA (peptide) LOD: 1:128000Optimal dilution of the GADD34 antibody should be determined by the researcher.

1. Not suitable for ICC/IF testing

---

### Storage Instruction:

Aliquot and store the GADD34 antibody at -20oC.

---

### Gene ID:

23645 (human);

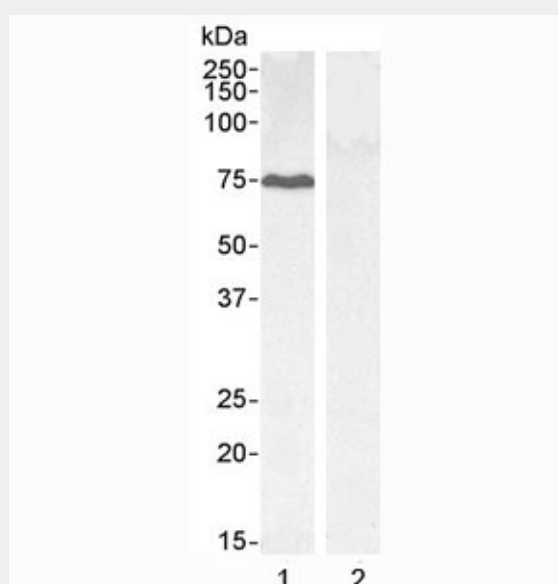
---

### References

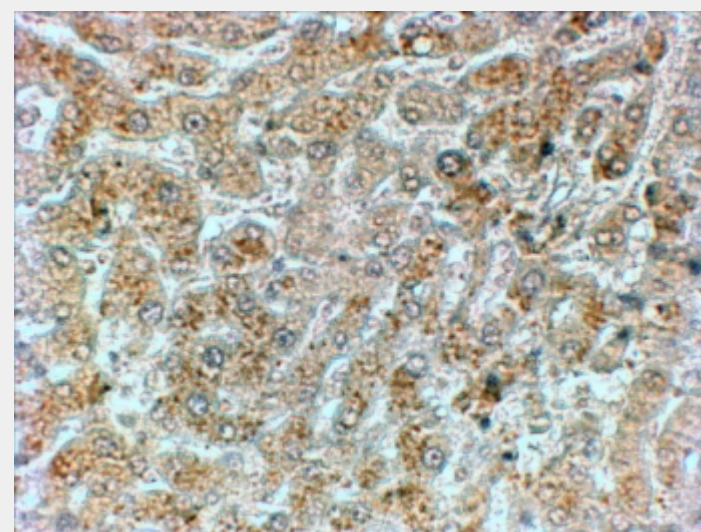
Antigen affinity purified

### Product Description

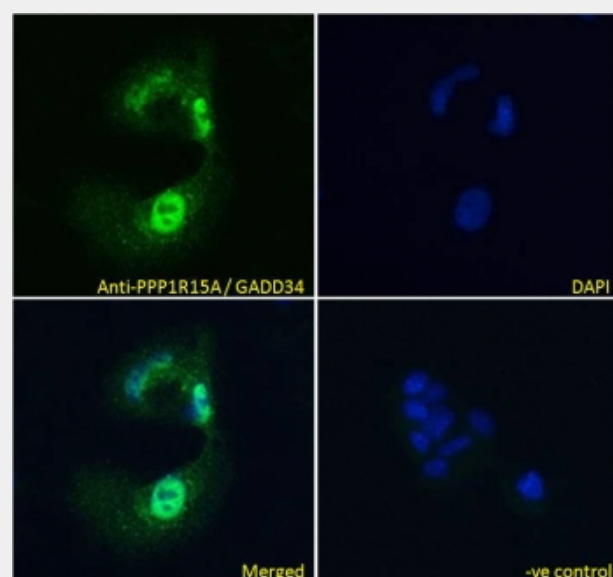
Additional name(s) for this target protein: Growth arrest and DNA-damage-inducible 34; PPP1R15A



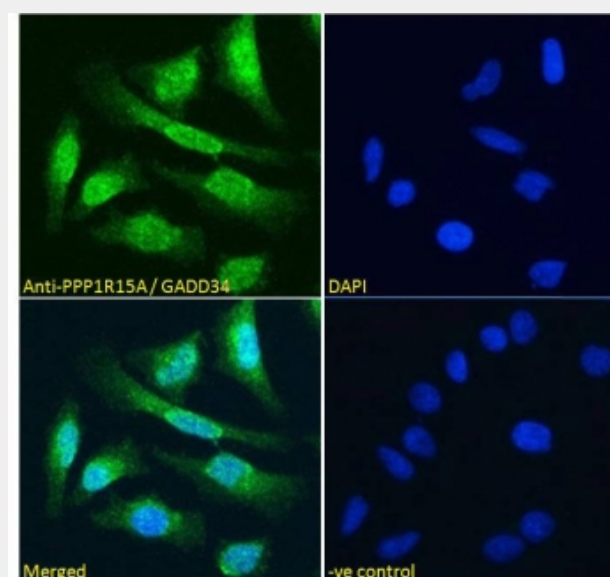
Western blot testing of 1) HEPG2 cell lysate and 2) KLY negative control cell lysate with GADD34 antibody at 0.1ug/ml. Predicted molecular weight ~73 kDa.



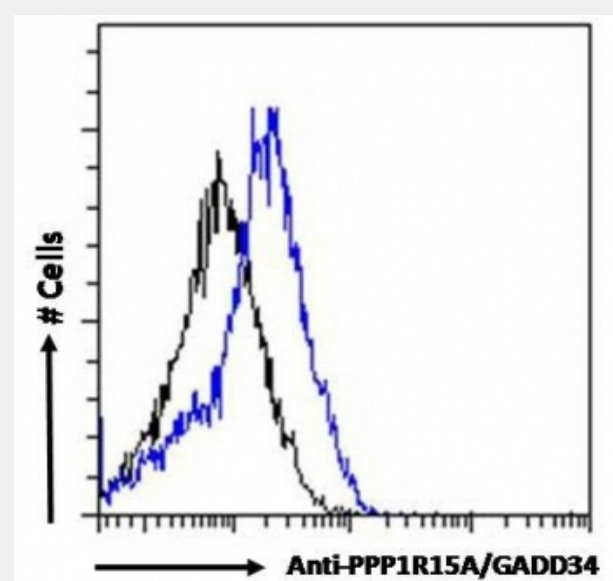
IHC staining of FFPE human liver with GADD34 antibody at 2ug/ml. HIER: steamed with pH6 citrate buffer, HRP-staining.



ICC/IF testing of fixed and permeabilized human HepG2 cells with GADD34 antibody (green) at 10ug/ml and DAPI nuclear stain (blue).



ICC/IF testing of fixed and permeabilized human HeLa cells with GADD34 antibody (green) at 10ug/ml and DAPI nuclear stain (blue).



FACS testing of fixed and permeabilized human HepG2 cells with GADD34 antibody (blue) at 10ug/10<sup>6</sup> cells and naive goat Ig (black).

All products are for RESEARCH USE ONLY. Not for diagnostic & therapeutic purposes!