

# GAPDH Antibody

Catalog No: tcna7318



## Available Sizes

**Size:** 100ug



## Specifications

**Application:**

WB, IHC-P

**Species Reactivity:**

Human, Mouse, Rat

**Host Species:**

Rabbit

**Immunogen / Amino acids:**

Amino acids N136-E335 from the human protein were used as the immunogen for the GAPDH antibody.

**Conjugation:**

Antigen affinity purified

**Clonality:**

Polyclonal

**Isotype:**

Rabbit IgG

**Form:**

Lyophilized powder

**Storage Buffer:**

Lyophilized from 1X PBS with 2.5% BSA, 0.025% sodium azide

**Recommended Dilution:**

WB: 0.5-1ug/ml

IHC (FFPE): 1-2ug/ml Optimal dilution of the GAPDH antibody should be determined by the researcher.

**Storage Instruction:**

After reconstitution, the GAPDH antibody can be stored for up to one month at 4°C. For long-term, aliquot and store at -20°C. Avoid repeated freezing and thawing.

**SwissProt:**

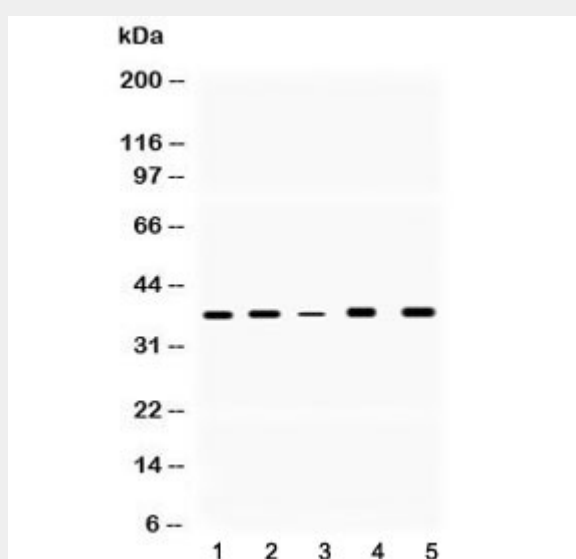
P04406

**References**

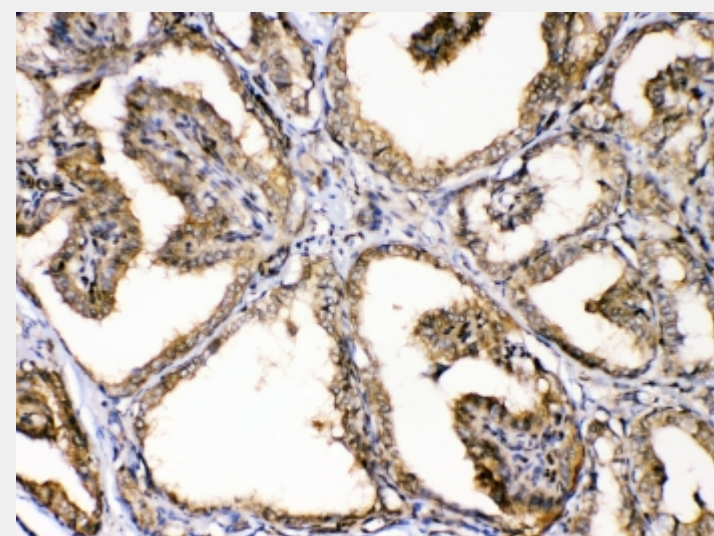
Antigen affinity purified

**Product Description**

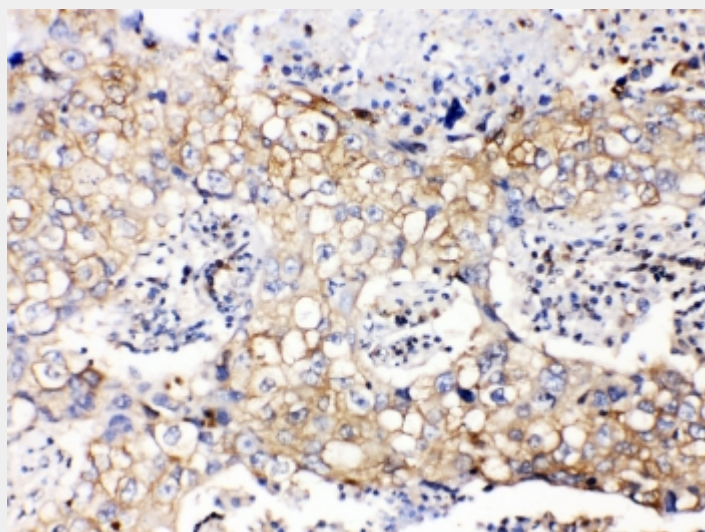
Glyceraldehyde 3-phosphate dehydrogenase (GAPDH or G3PDH) is an enzyme of ~37 kDa that catalyzes the sixth step of glycolysis and thus serves to break down glucose for energy and carbon molecules. This gene encodes a member of the glyceraldehyde-3-phosphate dehydrogenase protein family. GAPDH is mapped to 12p13.31. The encoded protein has been identified as a moonlighting protein based on its ability to perform mechanistically distinct functions. The product of this gene catalyzes an important energy-yielding step in carbohydrate metabolism, the reversible oxidative phosphorylation of glyceraldehyde-3-phosphate in the presence of inorganic phosphate and nicotinamide adenine dinucleotide (NAD). The encoded protein has additionally been identified to have uracil DNA glycosylase activity in the nucleus.



Western blot testing of 1) rat brain, 2) rat kidney, 3) mouse kidney, 4) human HeLa and 5) human MCF7 lysate with GAPDH antibody. Predicted molecular weight ~36 kDa.



IHC testing of FFPE human thyroid cancer tissue with GAPDH antibody. Required HIER: steam section in pH6 citrate buffer for 20 min and allow to cool prior to testing.



IHC testing of FFPE human lung cancer tissue with GAPDH antibody. Required HIER: steam section in pH6 citrate buffer for 20 min and allow to cool prior to testing.

All products are for RESEARCH USE ONLY. Not for diagnostic & therapeutic purposes!