

TCP1 delta Antibody / CCT4

Catalog No: tcna7081



Available Sizes

Size: 100ug



Specifications

Application:

WB, IHC-P, IHC-F, ICC, FACS

Species Reactivity:

Human, Mouse, Rat

Host Species:

Rabbit

Immunogen / Amino acids:

Amino acids R452-R539 of the human protein were used as the immunogen for the TCP1 delta antibody.

Conjugation:

Antigen affinity purified

Clonality:

Polyclonal

Isotype:

Rabbit IgG

Form:

Lyophilized powder

Storage Buffer:

0.5mg/ml if reconstituted with 0.2ml sterile DI water

Recommended Dilution:

Western blot: 0.1-0.5ug/ml

IHC (FFPE): 0.5-1ug/ml

IHC (Frozen): 0.5-1ug/ml

ICC (FFPE): 0.5-1ug/ml

FACS: 1-3ug/10⁶ cells Optimal dilution of the TCP1 delta antibody should be determined by the researcher.

Storage Instruction:

After reconstitution, the TCP1 delta antibody can be stored for up to one month at 4°C. For long-term, aliquot and store at -20°C. Avoid repeated freezing and thawing.

SwissProt:

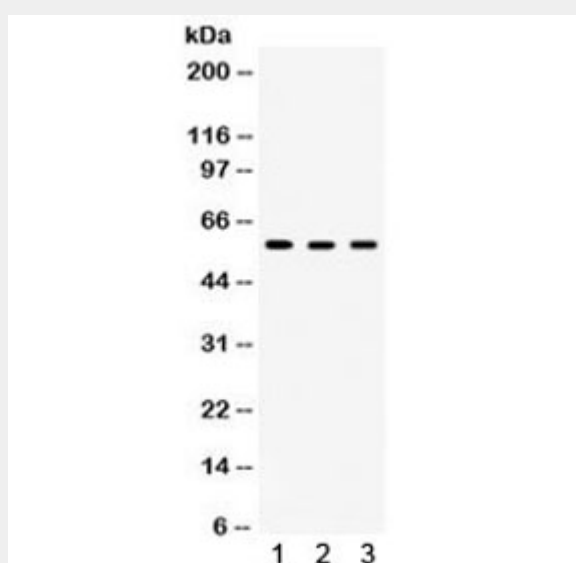
P50991

References

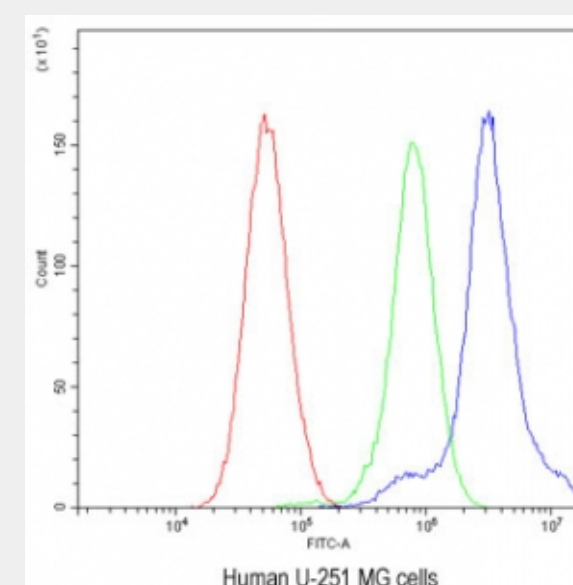
Antigen affinity purified

Product Description

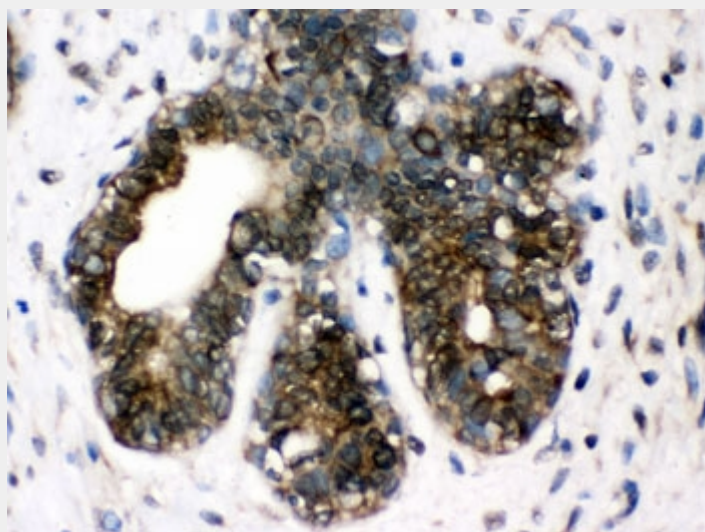
T-complex protein 1 subunit delta is a protein that in humans is encoded by the CCT4 gene. This gene is mapped to 2p15. The chaperonin containing TCP1 complex (CCT), also called the TCP1 ring complex, consists of 2 back-to-back rings, each containing 8 unique but homologous subunits, such as CCT4. CCT assists the folding of newly translated polypeptide substrates through multiple rounds of ATP-driven release and rebinding of partially folded intermediate forms. Substrates of CCT include the cytoskeletal proteins actin and tubulin, as well as alpha-transducin.



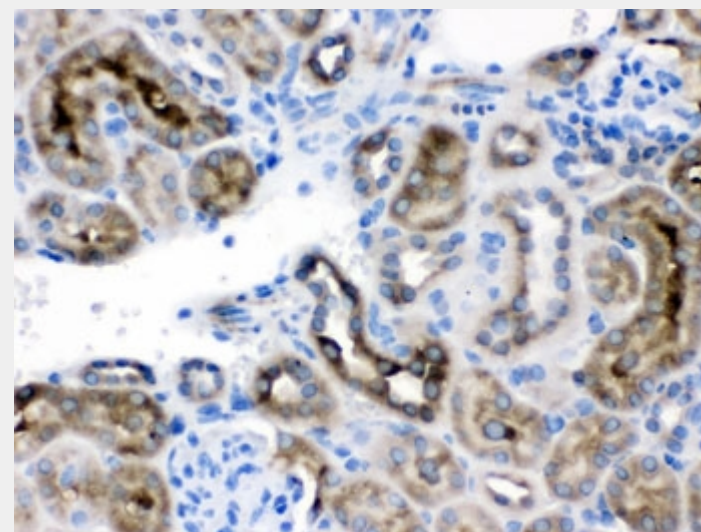
Western blot testing of 1) rat brain, 2) mouse brain and 3) human HeLa lysate with TCP1 delta antibody. Expected/observed molecular weight ~58 kDa.



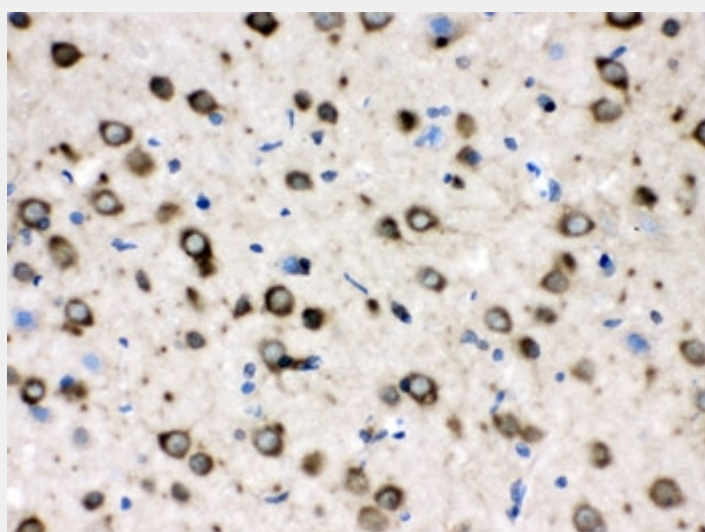
Flow cytometry testing of human U-251 MG cells with TCP1 delta antibody at 1ug/10⁶ cells (blocked with goat sera); Red=cells alone, Green=isotype control, Blue= TCP1 delta antibody.



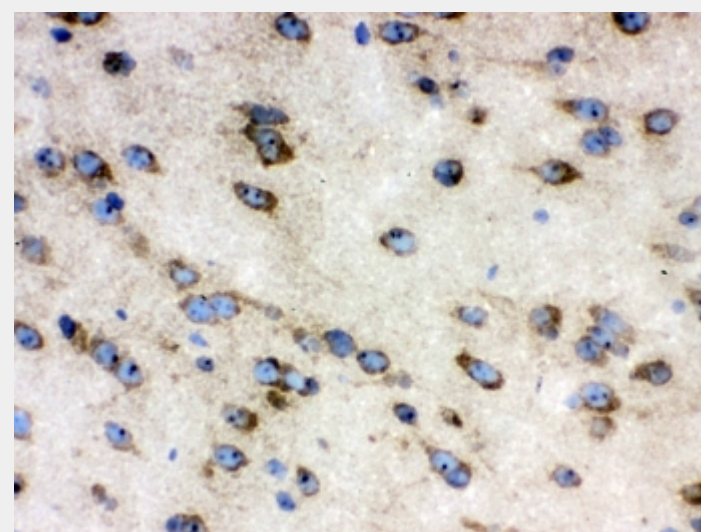
IHC testing of FFPE human breast cancer tissue with TCP1 delta antibody. HIER: Boil the paraffin sections in pH 6, 10mM citrate buffer for 20 minutes and allow to cool prior to testing.



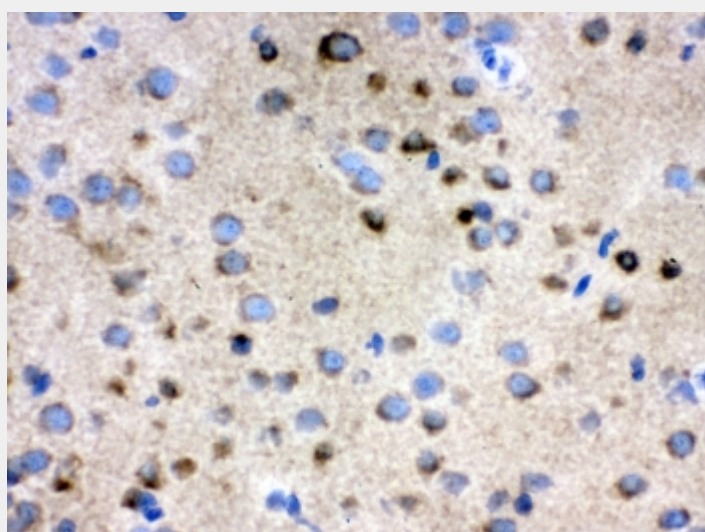
IHC testing of FFPE mouse kidney with TCP1 delta antibody. HIER: Boil the paraffin sections in pH 6, 10mM citrate buffer for 20 minutes and allow to cool prior to testing.



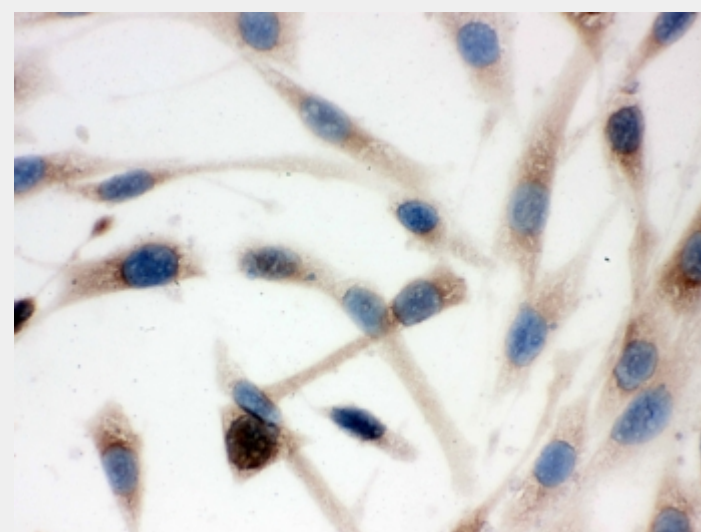
IHC testing of FFPE rat brain with TCP1 delta antibody. HIER: Boil the paraffin sections in pH 6, 10mM citrate buffer for 20 minutes and allow to cool prior to testing.



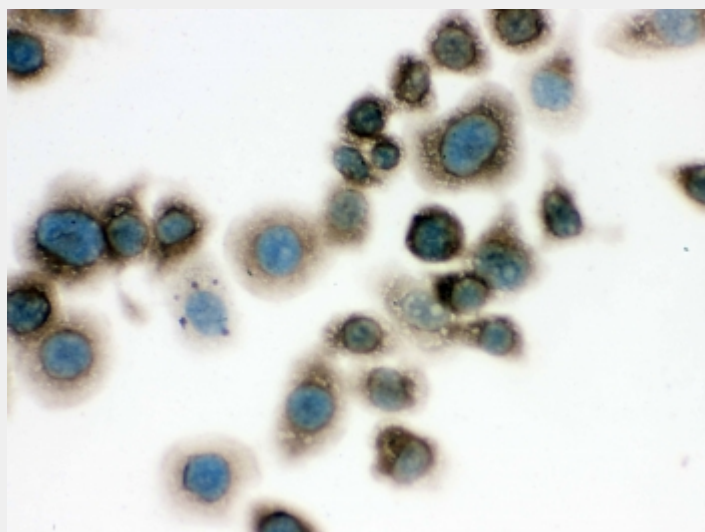
IHC testing of frozen mouse brain tissue with TCP1 antibody.



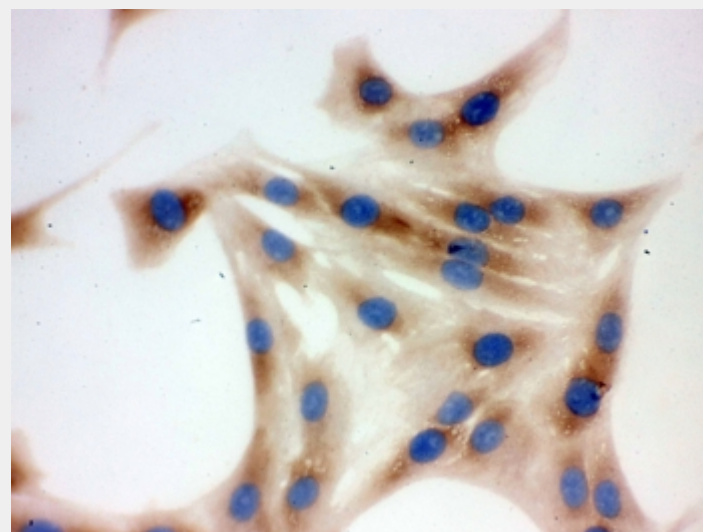
IHC testing of frozen rat brain tissue with TCP1 antibody.



ICC testing of FFPE human SHG-44 cells with TCP1 delta antibody.



ICC testing of FFPE mouse Neuro-2a cells with TCP1 delta antibody.



ICC testing of FFPE rat NRK cells with TCP1 delta antibody.

All products are for RESEARCH USE ONLY. Not for diagnostic & therapeutic purposes!