

Lamin B1 Antibody

Catalog No: tcna6680



Available Sizes

Size: 100ug



Specifications

Application:

WB, IHC-P, IHC-F, ICC

Species Reactivity:

Human, Mouse, Rat

Host Species:

Rabbit

Immunogen / Amino acids:

Amino acids 266-583 of human Lamin B1 were used as the immunogen for the LMNB1 antibody.

Conjugation:

Antigen affinity purified

Clonality:

Polyclonal

Isotype:

Rabbit IgG

Form:

Lyophilized powder

Storage Buffer:

0.5mg/ml if reconstituted with 0.2ml sterile DI water

Recommended Dilution:

Western blot: 0.1-0.5ug/ml

IHC (Paraffin): 0.5-1ug/ml

IHC (Frozen): 0.5-1ug/ml

ICC (Paraffin): 0.5-1ug/ml Optimal dilution of the LMNB1 antibody should be determined by the researcher.

Storage Instruction:

After reconstitution, the LMNB1 antibody can be stored for up to one month at 4°C. For long-term, aliquot and store at -20°C. Avoid repeated freezing and thawing.

SwissProt:

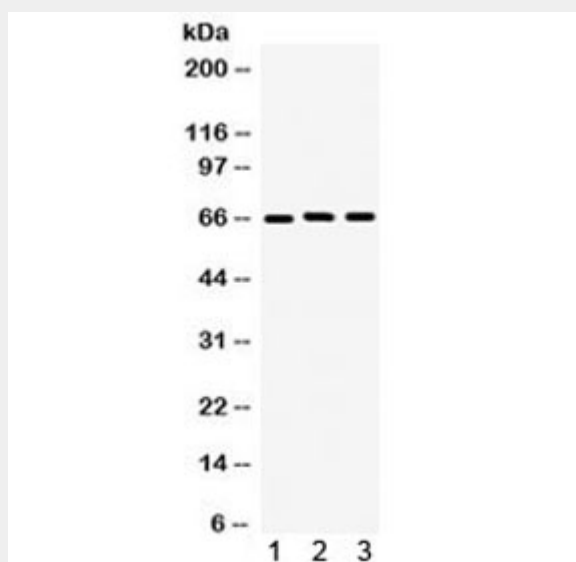
P20700

References

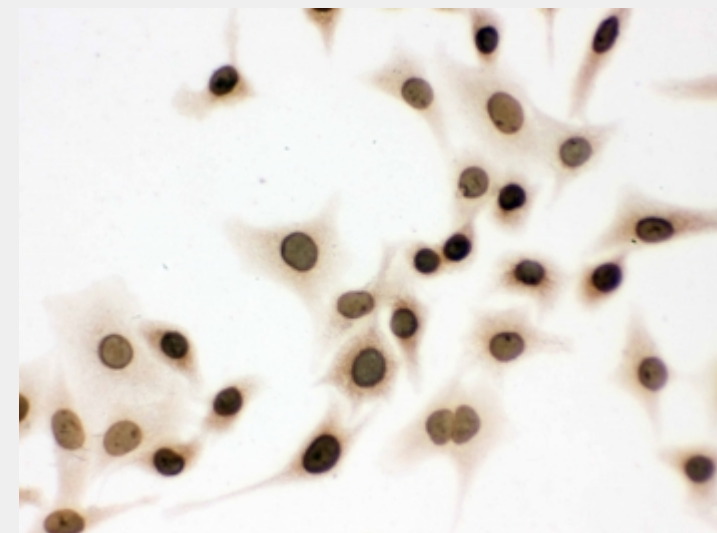
Antigen affinity purified

Product Description

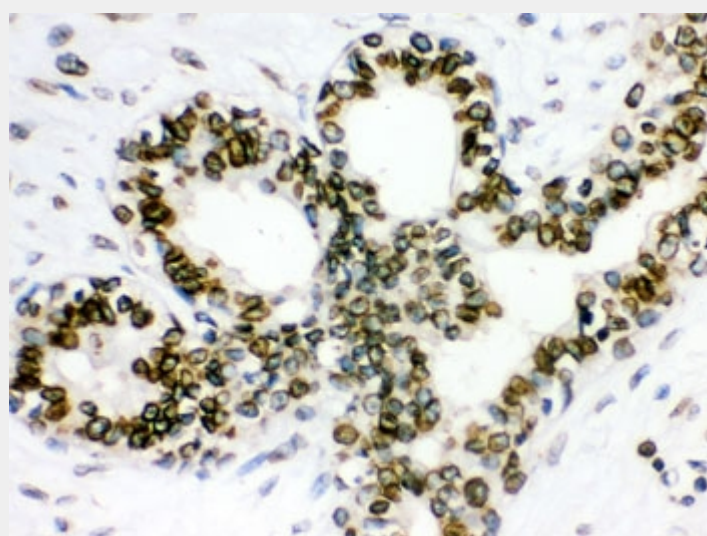
Lamin B1 is a protein that in humans is encoded by the LMNB1 gene. The nuclear lamina consists of a two-dimensional matrix of proteins located next to the inner nuclear membrane. The lamin family of proteins make up the matrix and are highly conserved in evolution. During mitosis, the lamina matrix is reversibly disassembled as the lamin proteins are phosphorylated. Lamin proteins are thought to be involved in nuclear stability, chromatin structure and gene expression. Vertebrate lamins consist of two types, A and B. This gene encodes one of the two B type proteins, B1.



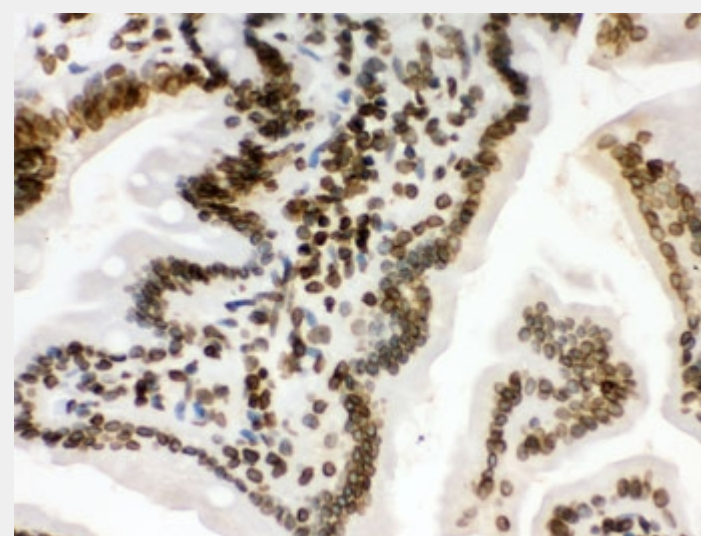
Western blot testing of 1) human U87, 2) rat PC-12 and 3) mouse NIH3T3 lysate with LMNB1 antibody. Predicted molecular weight ~66 kDa.



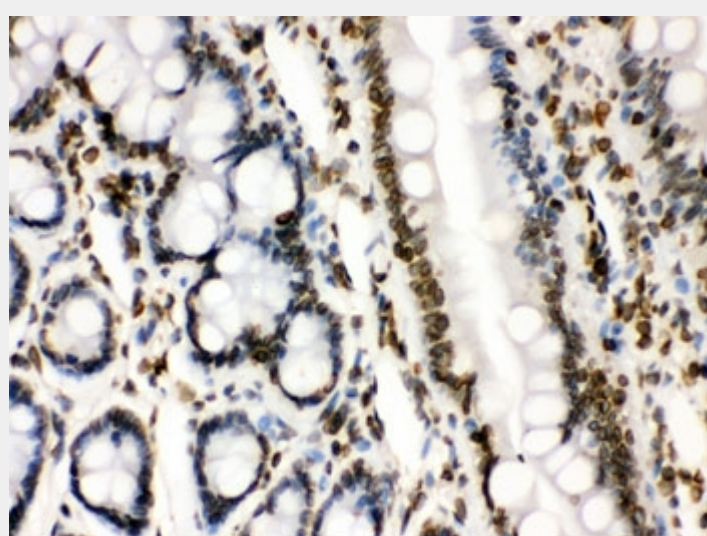
ICC testing of FFPE human A549 cells with LMNB1 antibody. HIER: Boil the paraffin sections in pH 6, 10mM citrate buffer for 20 minutes and allow to cool prior to staining.



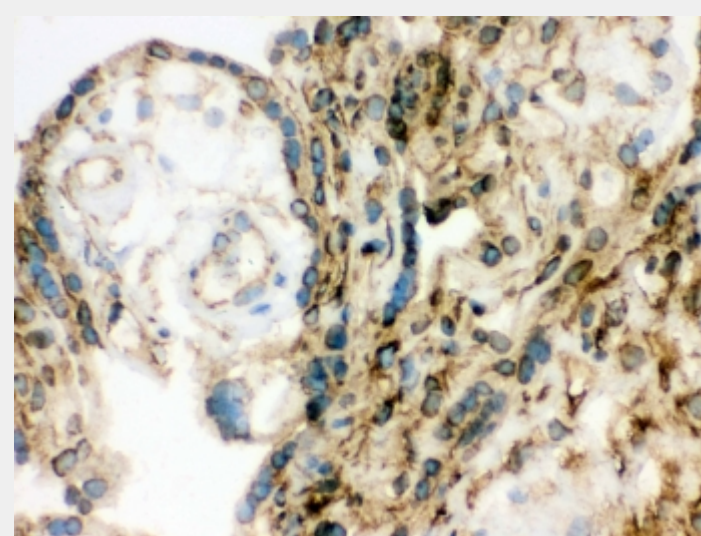
IHC testing of FFPE human breast cancer tissue with LMNB1 antibody. HIER: Boil the paraffin sections in pH 6, 10mM citrate buffer for 20 minutes and allow to cool prior to staining.



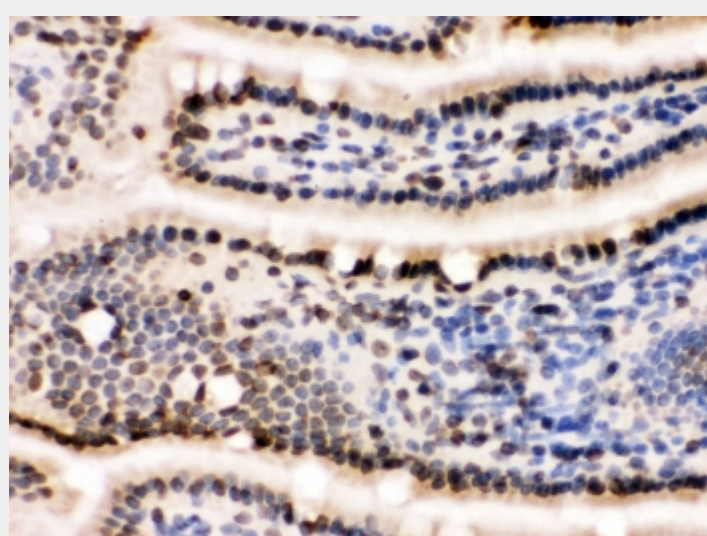
IHC testing of FFPE mouse intestine with LMNB1 antibody. HIER: Boil the paraffin sections in pH 6, 10mM citrate buffer for 20 minutes and allow to cool prior to staining.



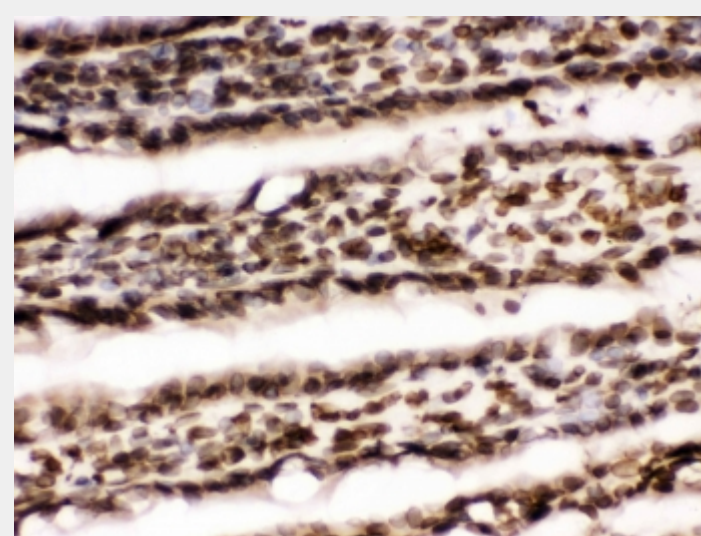
IHC testing of FFPE rat intestine with LMNB1 antibody. HIER: Boil the paraffin sections in pH 6, 10mM citrate buffer for 20 minutes and allow to cool prior to staining.



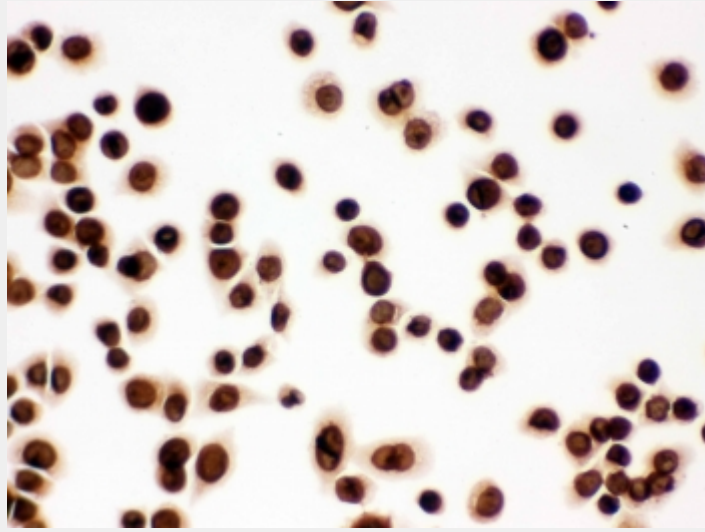
IHC testing of frozen human placental tissue with LMNB1 antibody.



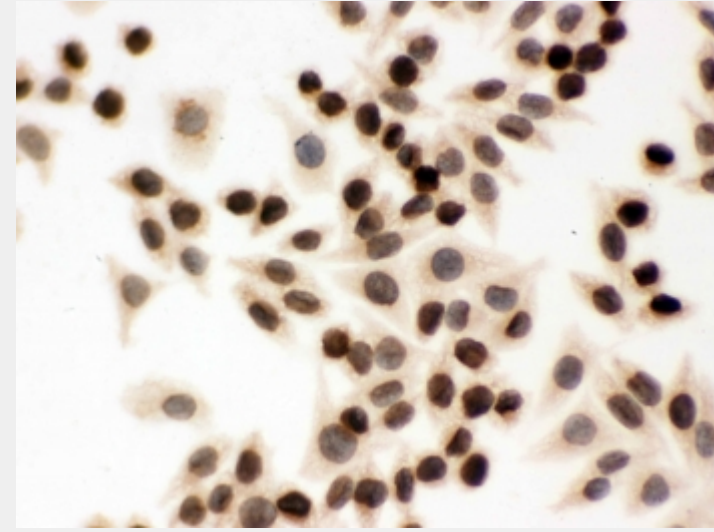
IHC testing of frozen mouse small intestine tissue with LMNB1 antibody.



IHC testing of frozen rat small intestine tissue with LMNB1 antibody.



ICC testing of FFPE human SW480 cells with LMNB1 antibody. HIER: Boil the paraffin sections in pH 6, 10mM citrate buffer for 20 minutes and allow to cool prior to staining.



ICC testing of FFPE human SMMC-7721 cells with LMNB1 antibody. HIER: Boil the paraffin sections in pH 6, 10mM citrate buffer for 20 minutes and allow to cool prior to staining.

All products are for RESEARCH USE ONLY. Not for diagnostic & therapeutic purposes!