

MIF Antibody

Catalog No: tcna6368



Available Sizes

Size: 100ug



Specifications

Application:

WB, IHC-P, ICC

Species Reactivity:

Human

Host Species:

Rabbit

Immunogen / Amino acids:

Human partial recombinant protein (AA 2-115) was used as the immunogen for this MIF antibody.

Conjugation:

Antigen affinity purified

Clonality:

Polyclonal

Isotype:

Rabbit IgG

Form:

Lyophilized powder

Storage Buffer:

0.5mg/ml if reconstituted with 0.2ml sterile DI water

Recommended Dilution:

Western blot: 0.5-1ug/ml

IHC (Paraffin): 0.5-1ug/ml

Immunocytochemistry: 0.5-1ug/ml Variations in secondary/substrate sensitivities and test protocols may require the

MIF antibody to be titrated for optimal performance.

Storage Instruction:

The lyophilized MIF antibody can be stored at 4oC to -20oC. After reconstitution, aliquot and store at -20oC. Avoid repeated freeze/thaws.

Gene ID:

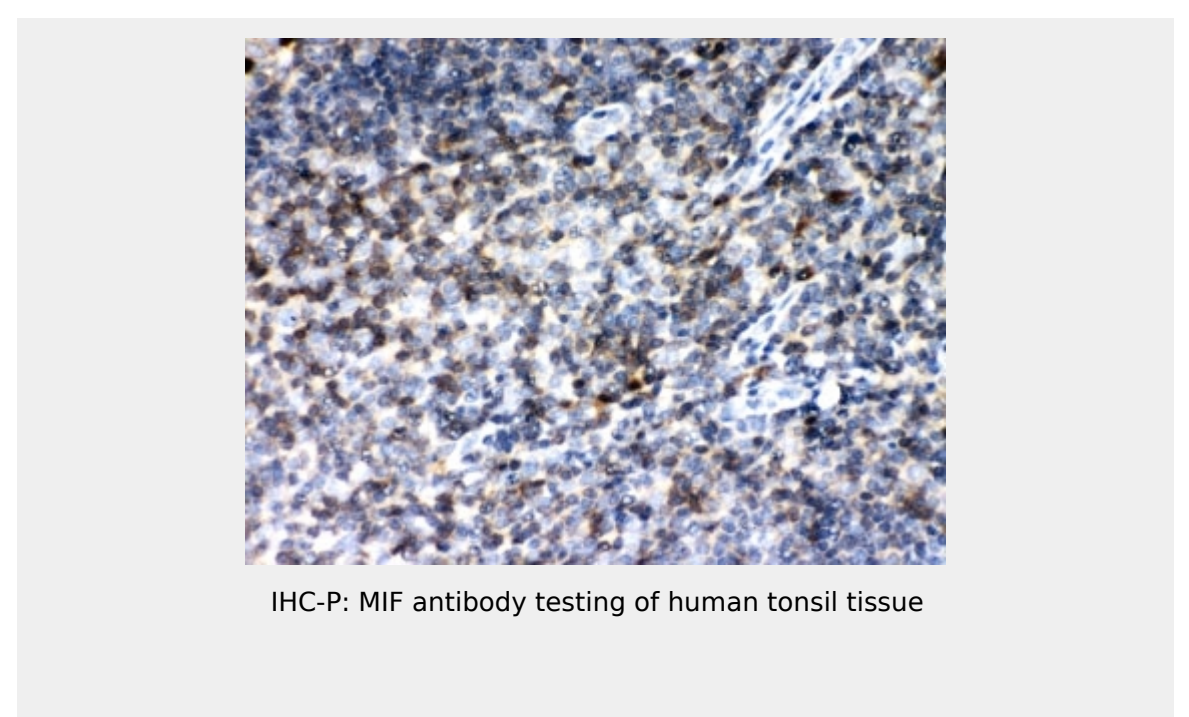
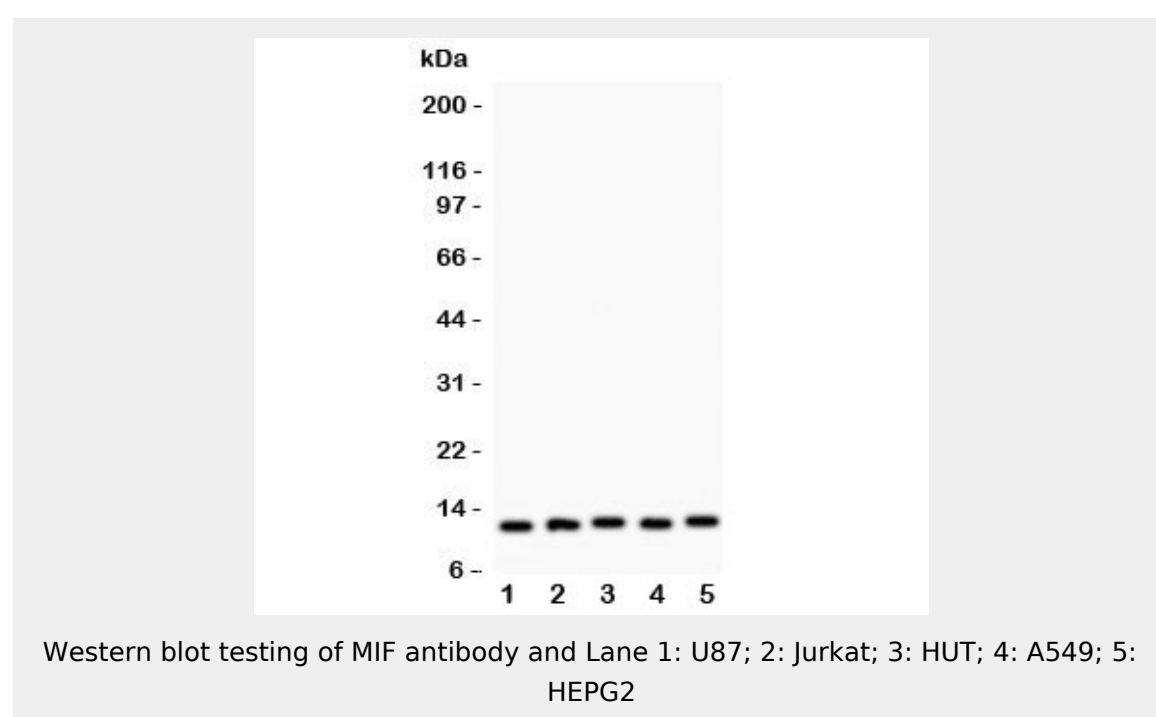
4282 (human);

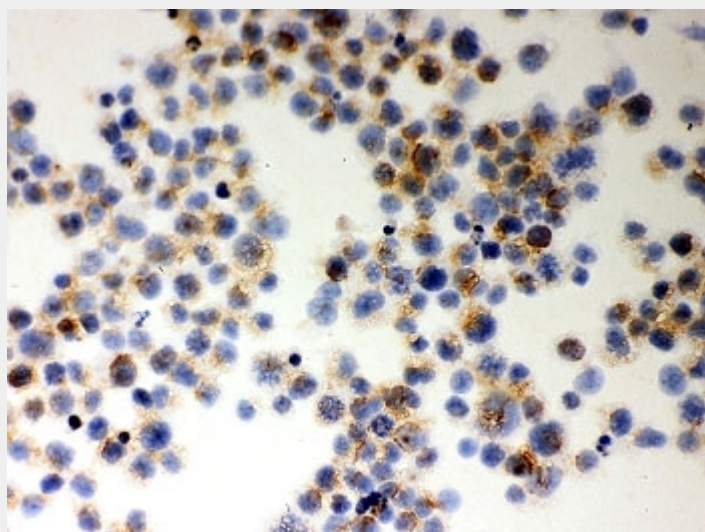
References

Antigen affinity purified

Product Description

Macrophage migration inhibitory factor (MMIF), also known as GIF, is a protein that in humans is encoded by the MIF gene. It is a cytokine released by T-lymphocytes, macrophages, and the pituitary gland that serves to integrate peripheral and central inflammatory responses. The gene has 3 exons separated by introns of only 189 and 95 bp, and covers less than 1 kb. MIF plays a critical role in inflammatory diseases and atherogenesis. It is also involved in cell-mediated immunity and immunoregulation. MIF plays a role in the regulation of macrophage function in host defense through the suppression of anti-inflammatory effects of glucocorticoids.





ICC testing of MIF antibody and Jurkat cells

All products are for RESEARCH USE ONLY. Not for diagnostic & therapeutic purposes!